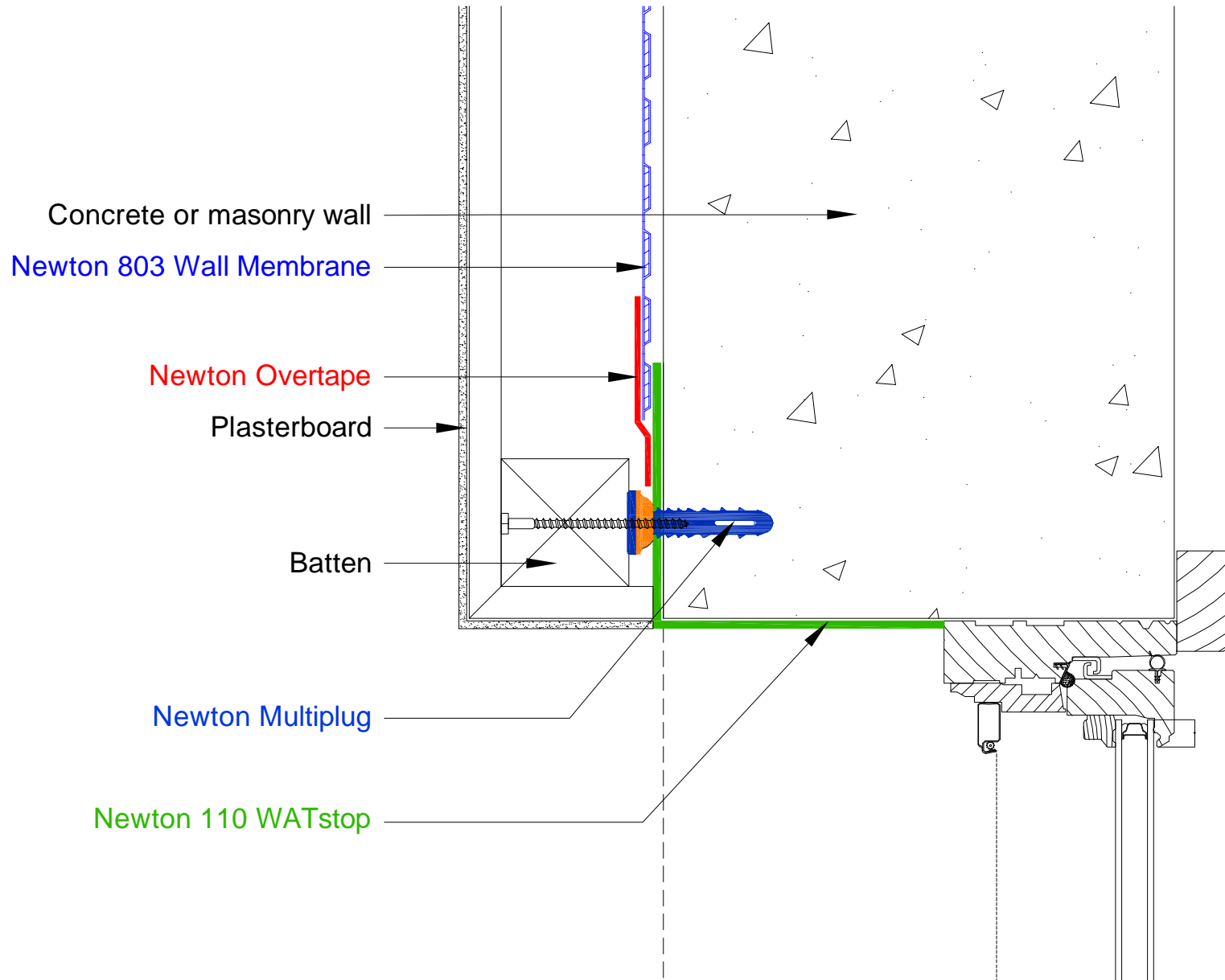


# Plan

DO NOT SCALE



## Notes

This detail shows the detailing of Newton System 800 wall membrane to a window reveal in plan, utilising Newton 110 WATstop to create a continuous barrier.

Both options are applied to the window reveal and returned 50mm to the main wall surface.

Newton 110 WATstop is a 3 part epoxy/cement waterproofing membrane that is applied to the reveal at a thickness of approx 1mm but can be applied thicker if required and has the capability to fill deviations, holes and cracks as a mortar. Newton 110 WATstop can be painted or render/plastered onto to create a suitable finish to the reveal so acts as both a damp proofing barrier and a reveal finish in one application.

To access the details mentioned above, relevant NBS Clauses, product data and MSDS sheets, please visit Technical resources via [www.newtonwaterproofing.co.uk](http://www.newtonwaterproofing.co.uk)

System 800 Damp Proofing

Window reveal batten & plasterboard finish

NOTE: This is a damp proofing detail. Please refer to product data sheets before installation of our products. Newton Waterproofing Systems reserves the right to update drawings.