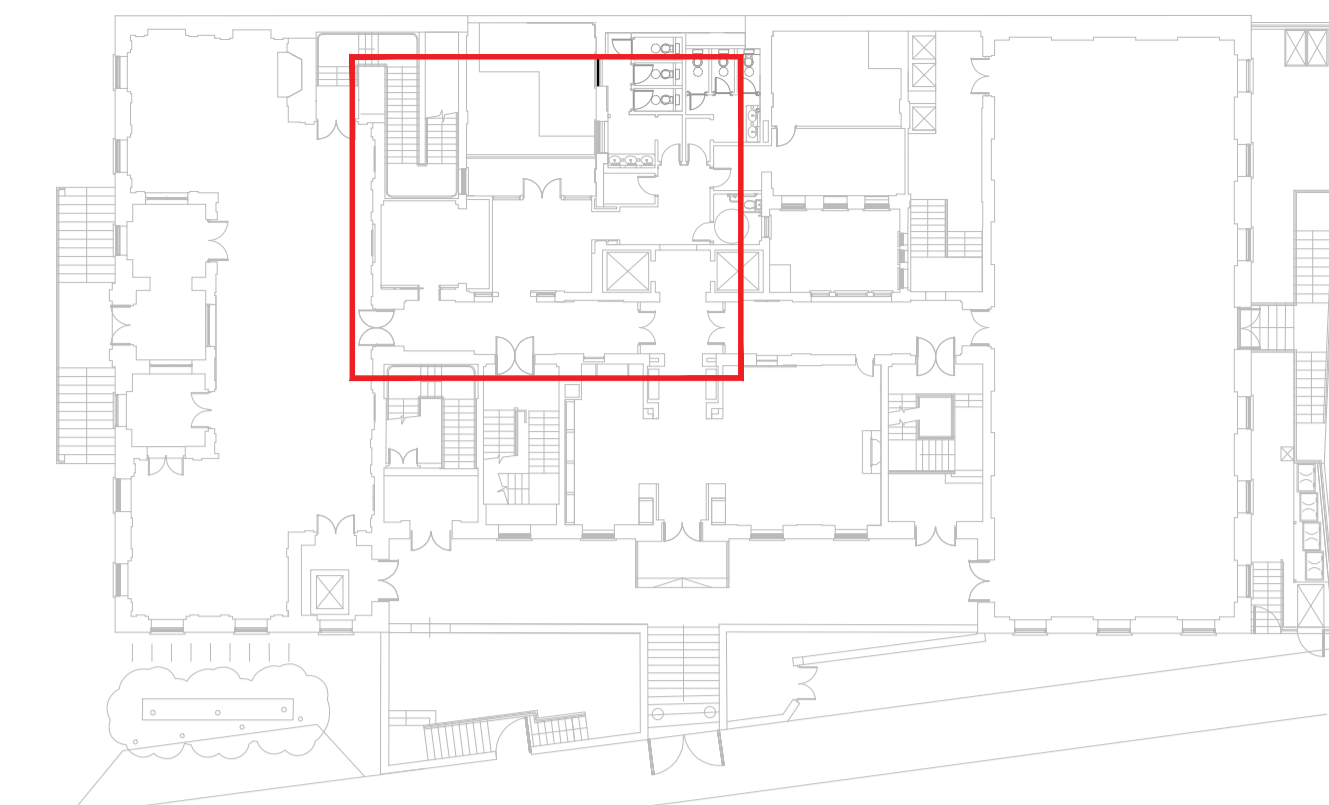
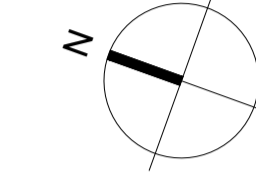


Drawing Specific Notes:

- This drawing is to be read in conjunction with associated Schedule of Work, by others.
- Where new walls or sections of infill are formed, unless otherwise stated they are to be in materials to match the adjacent existing, finished to match their surroundings. This includes, plasterwork, mouldings, profiles, etc.
- Unless otherwise noted, new doorsets, sash windows and cills are to be dimensioned to match existing adjacent detailing and materials, but to suit the width of the opening in which they will sit. Shop drawings should be provided to the architect for each of these elements for comment prior to manufacture.
- Where setting out notes are shown on an elevation drawing, the dimension notes are independent of other elevations unless noted on drawing.
- Cornice and skirting to be run around all walls to match existing adjacent as shown in internal elevations
- Partition setting out is shown here in red, to be confirmed on site with architect at the outset of construction.



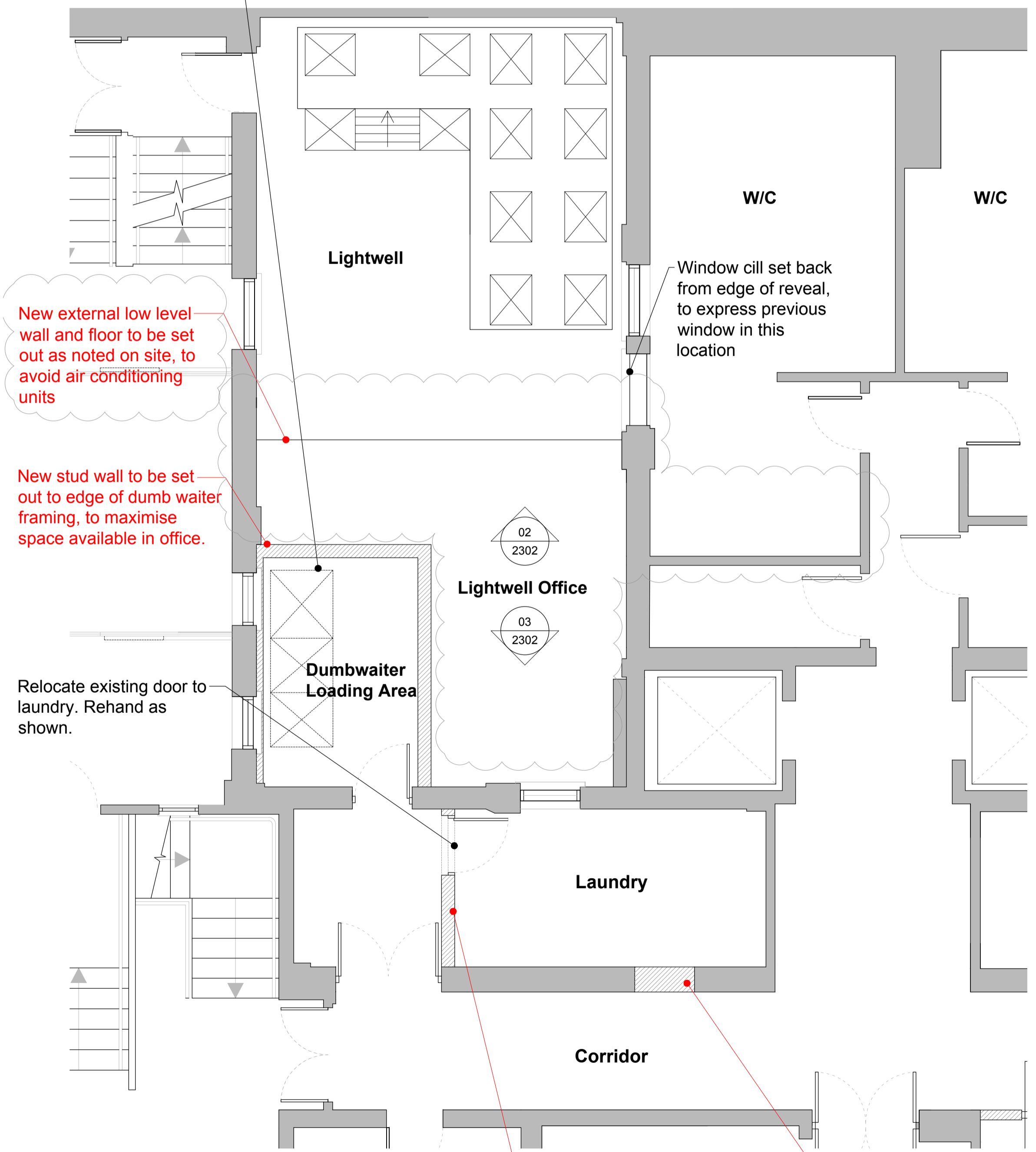
00 Key Plan Reference
2350 N.T.S.



- Notes
1. Any dwg format drawing is to be read in conjunction with and at the scale of the accompanying pdf.
 2. For status 'C' (Construction) drawings: All dimensions are to be checked on site by the contractor, scaling is for Local Authority purposes only. Unless otherwise indicated, all dimensions are in millimeters. All information on this drawing is to be read in conjunction with the relevant Donald Insall Associates specification and trade contractors' drawings and information by specialists.
 3. In the event of any query, please contact us immediately.
 4. This drawing may contain survey information by others and is to be used solely for the purposes for which it was issued.
 5. These are uncontrolled documents issued for information purposes only. If you have any queries regarding the drawings, please contact DIA immediately. Please note DIA cannot be held responsible for any errors arising from changes made to an uncontrolled dwg file.
- © 2016 DONALD INSALL ASSOCIATES LTD

Drawing Status	B Building Control	T Tender
F Feasibility	D Developed Design	C Construction
S Sketch Design	M Measurement	R Record
P Planning		

Dumb waiters shown indicatively, awaiting response from Orientrose, r.e. sizing.

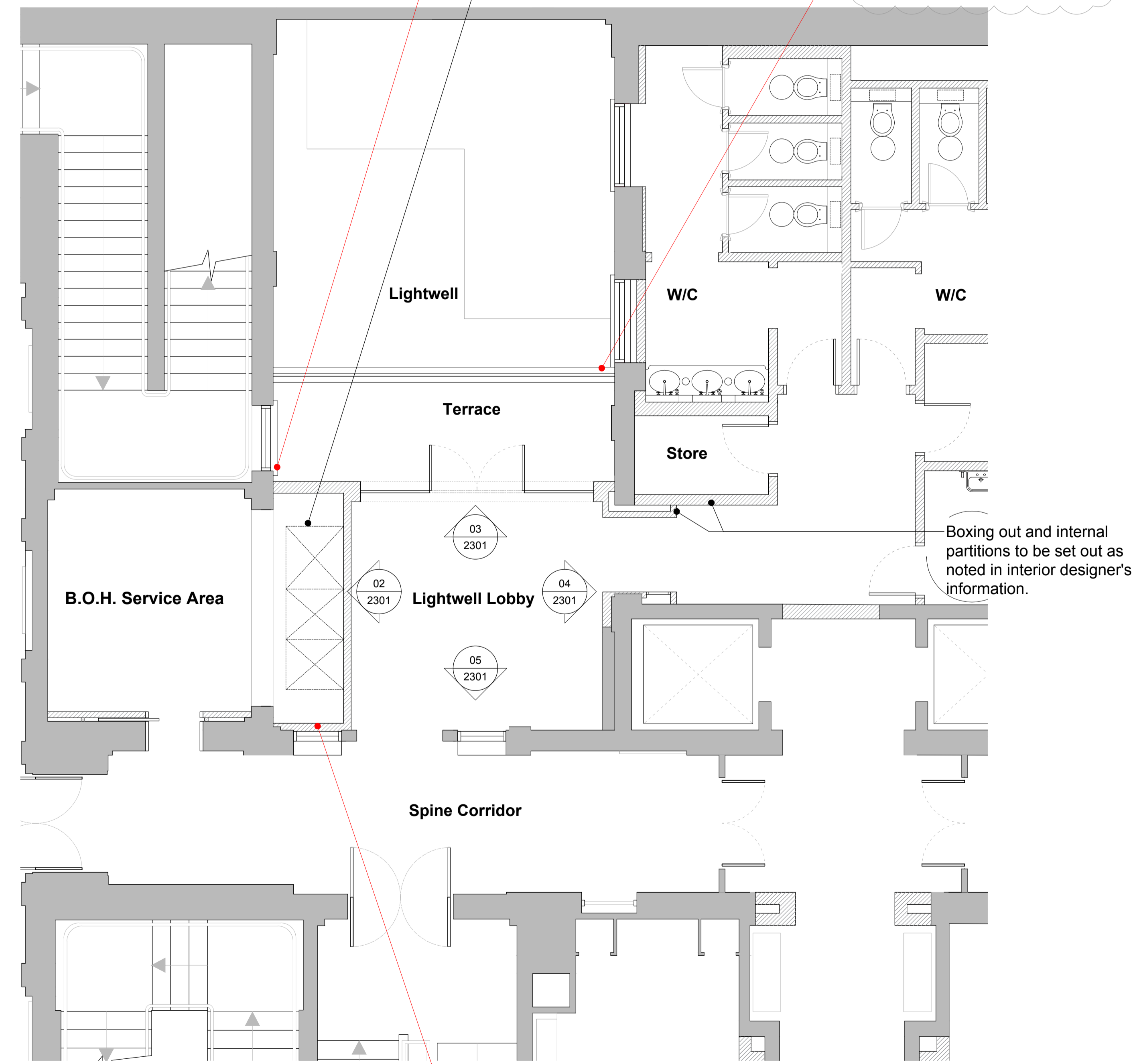


01 Lightwell Basement Floor
2350 1:50 @ A1

Outer wall of lightwell lobby set out from outer edge of adjacent window cill (as agreed on site).

Dumb waiters shown indicatively, awaiting response from Orientrose, r.e. sizing.

Edge of terrace set out from outer edge of adjacent window cill (as agreed on site).



02 Lightwell Ground Floor
2350 1:50 @ A1

Rev	Date	Dwn	Auth	Revision
C	06.09.17	JXT	JKC	Issued for Construction
B	10.08.17	BXR	JKC	Issued for Construction
A	08.08.17	BXR	JKC	Issued for Comment
-	19-07-17	BXR	JKC	Draft Issue

Bloomsbury Hotel
London
WC1B 3NN

Lightwell Infill
Lightwell Floorplans
Proposed

Project	BLOOM.01	No	2350
Scale (A1)	1:50	Status	C
		Revision	C

Donald Insall Associates
Chartered Architects and Historic Building Consultants

12 Devonshire Street, London W1G 7AB
(+44) 020 7245 9888
london@insall-architects.co.uk