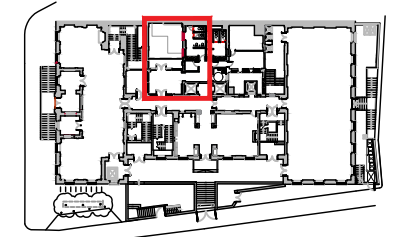


All drawings based on survey by others

- Key:
- Existing fabric
 - Proposed wall

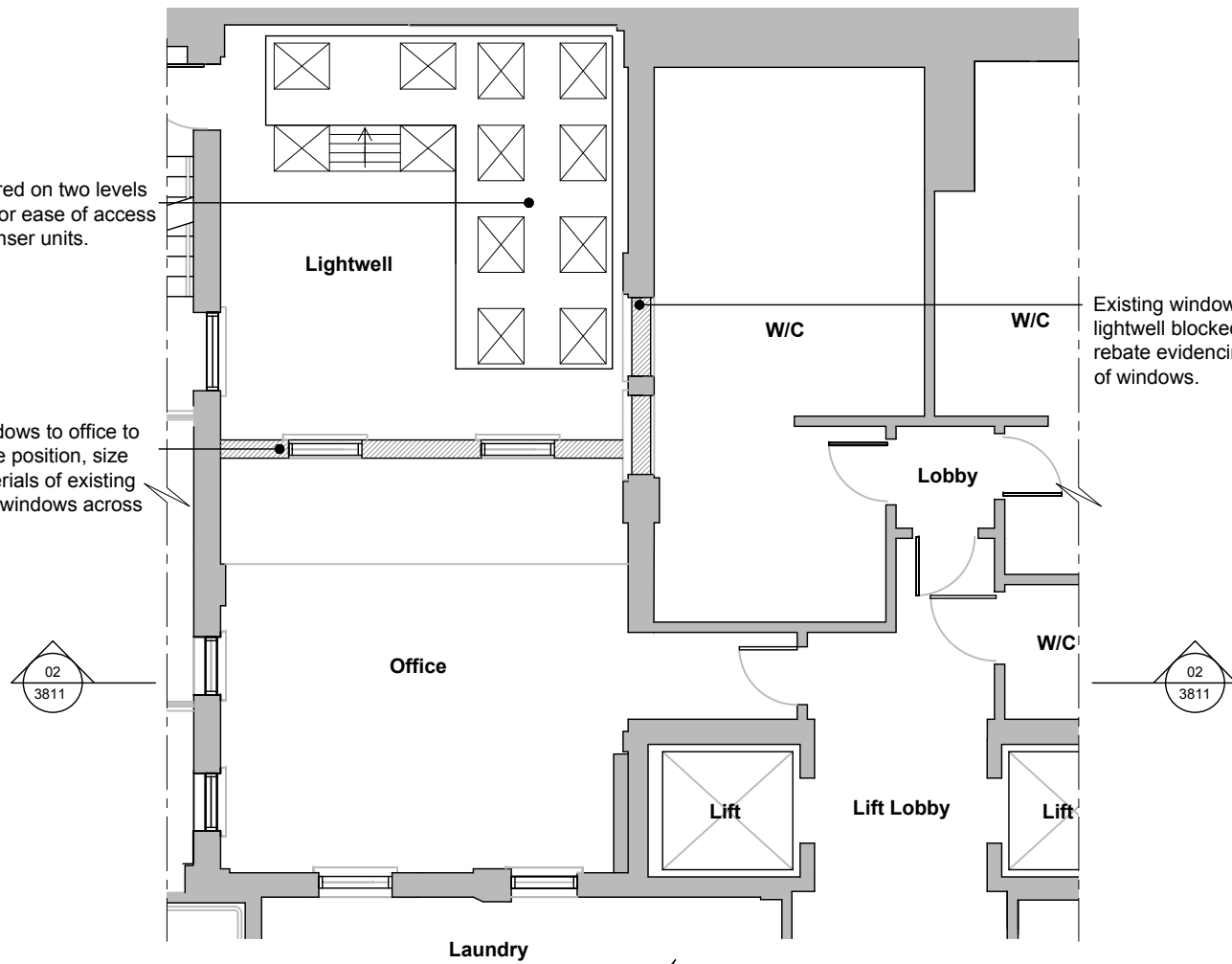


04 KEY PLAN
3811 NTS

Plant stored on two levels to allow for ease of access to condenser units.

New windows to office to match the position, size and materials of existing opposite windows across lightwell.

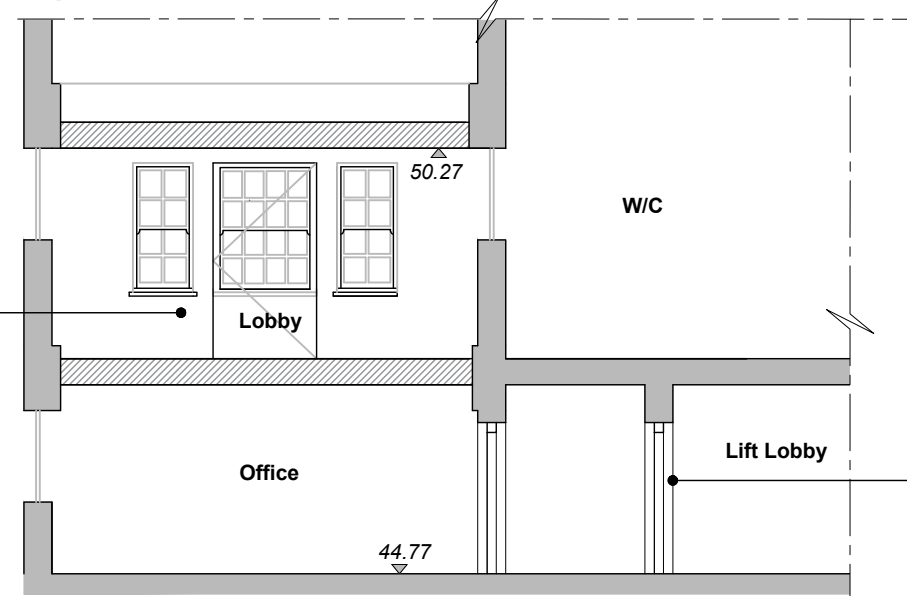
Existing windows onto lightwell blocked in, with rebate evidencing position of windows.



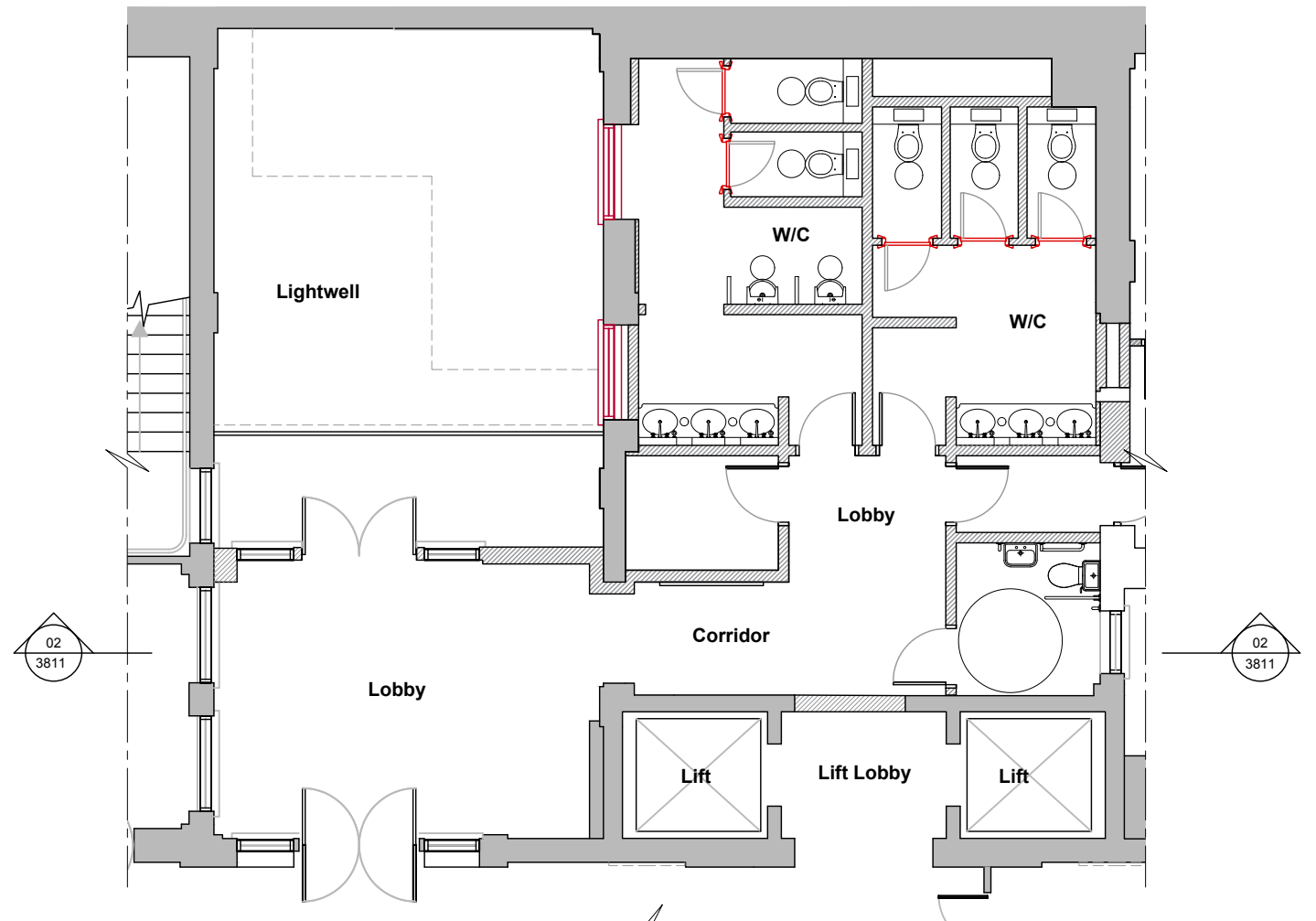
01 LIGHTWELL EXTENSION - BASEMENT PLAN AS PROPOSED
3811 1:100 @ A3

New lobby at Ground Floor stacked above back of house Office at Basement.

New doorway into lightwell office.



02 LIGHTWELL EXTENSION - SECTION AS PROPOSED
3811 1:100 @ A3



03 LIGHTWELL EXTENSION - GROUND FLOOR PLAN AS PROPOSED
3811 1:100 @ A3

0 1 2 5
Scale 1:100 m

ISSUED FOR STATUTORY COMMENT

Notes:
1 Any dwg format drawing is to be read only in conjunction with and at the scale of the accompanying pdf.
2 Status 'C' drawing (Construction): All dimensions are to be checked on site by the contractor, scaling is for Planning purposes only. Unless otherwise indicated, all dimensions are in millimeters. All information on this drawing is to be read in conjunction with the relevant Donald Insall Associates specification and trade contractors' drawings and information by specialists.
3 In the event of any query, please contact us immediately.
4 This drawing contains survey information by others and is to be used solely for the purposes for which it was issued.

Rev	Date	Dwn	Auth	Revision
-	22.08.16	BXR	AEF	INITIAL ISSUE

Drawing Status
F Feasibility
S Sketch Design
D Design
P Planning
B Building Control
W Working Drawing
M Measurement
T Tender
C Construction
R Record

BLOOMSBURY HOTEL
WC1B 3NN

Basement Lightwell
Proposed Plan & Section

Donald Insall Associates
Chartered Architects and Historic Building Consultants
12 Devonshire Street, London W1G 7AB
T: (+44)20 7245 9888 www.insall-architects.co.uk

Project BLOOM.01 No 3811
Scale (A3) 1:100 Status P Rev -