

Acrefine Seismic Spring Isolator

Steel Housed with Top Plate

ASI-L

DESCRIPTION



Acrefine ASI-L type seismic vibration isolators are designed to restrain lateral and vertical equipment movement caused by external forces such as high winds or seismic events. The isolator housing is fabricated from high quality welded steel. This design incorporates restraining points that limit vertical and lateral movement of the equipment. The operational height of the isolator is fixed and any adjustment can be made via the adjustment nut located on top of the spring plate. Fixing holes are provided on the top plate for easy installation of equipment.

Vibration isolation is achieved by free-standing laterally-stable steel springs. All springs are assembled into elastomeric acoustical cups to eliminate internal noise. Springs are designed with 50% overload capacity and the lateral spring stiffness is greater than the vertical stiffness to assure seismic stability.

KEY FEATURES

- ✓ Designed for loads up to 3110 kg (6858 lb) with 25 mm (1") or 50 mm (2") deflection springs
- ✓ All-directional restraint, limiting equipment motion to 6 mm (1/4")
- ✓ Constant free and operational height
- ✓ E-Coated housing for superior corrosion protection
- ✓ Powder coated and colour coded springs
- ✓ Field interchangeable springs
- ✓ Can be bolted or welded in place



APPLICATIONS

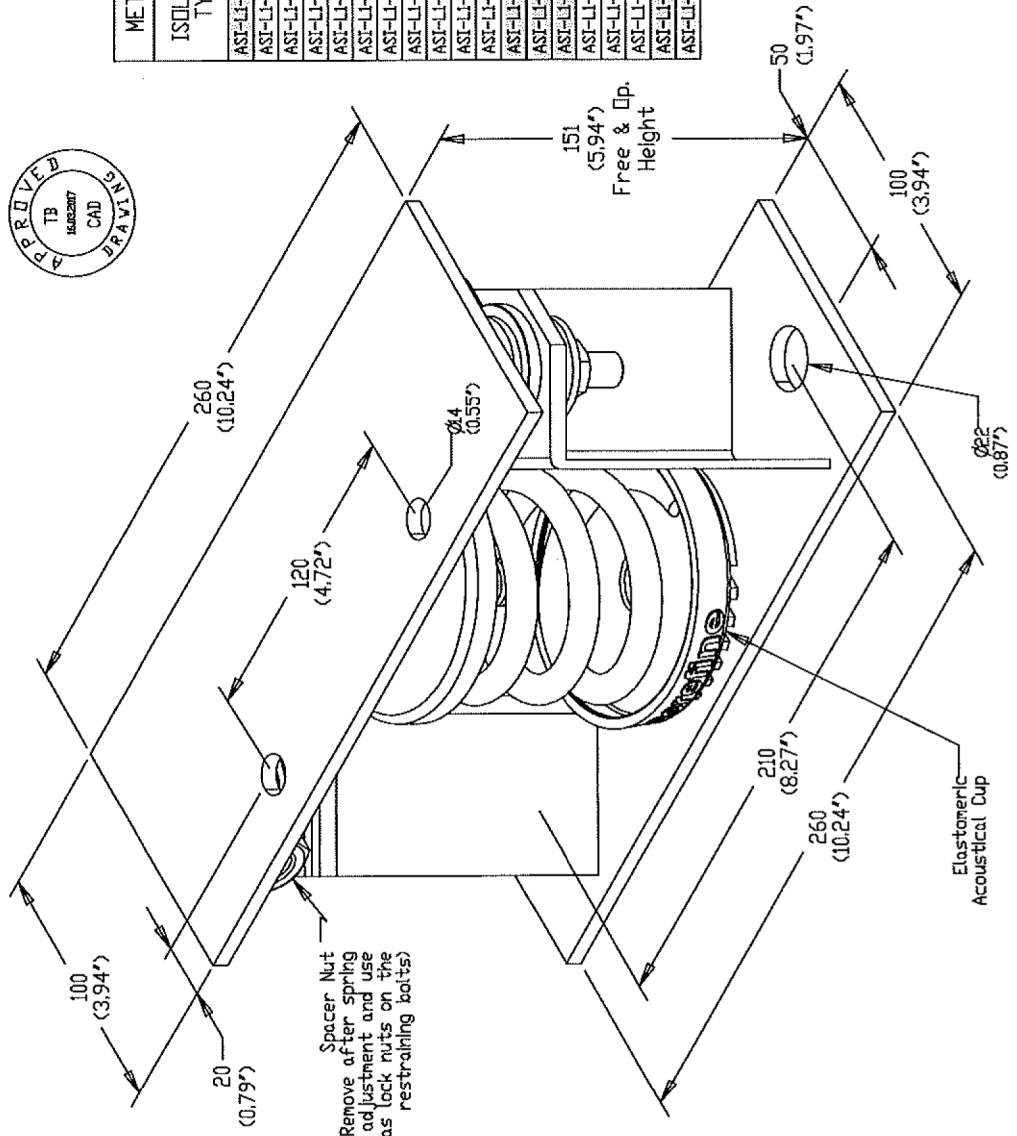
Acrefine ASI-L type seismic vibration isolators are designed for floor mounted equipment such as cooling towers, chillers and boilers. These isolators are ideally suited for applications where seismic or high wind forces are likely. Spring deflections of 50 mm (2") provide excellent noise and vibration control.

ASI-L isolators are available 25 mm (1") and 50 mm (2") deflection as a standard. The load range is from 7 kg (15 lb) to 3110 kg (6858 lb). For higher deflection or load capacities please contact us.



Member of
IoA
SECD
BSi

REV.	DESCRIPTION	DATE	MADE BY	APPL
0	Released from Engineering.	15.03.17	MMD	TB



ISOLATOR PROPERTIES		ISOLATOR PROPERTIES	
ISOLATOR TYPE	Load Capacity (kg)	ISOLATOR TYPE	Load Capacity (lb)
ASI-LI-IB-70	70	ASI-LI-IB-70	154
ASI-LI-IB-95	95	ASI-LI-IB-95	209
ASI-LI-IB-120	120	ASI-LI-IB-120	265
ASI-LI-IB-140	140	ASI-LI-IB-140	309
ASI-LI-IB-165	165	ASI-LI-IB-165	364
ASI-LI-IB-190	190	ASI-LI-IB-190	419
ASI-LI-IB-230	230	ASI-LI-IB-230	507
ASI-LI-IB-255	255	ASI-LI-IB-255	562
ASI-LI-IB-280	280	ASI-LI-IB-280	617
ASI-LI-IB-370	370	ASI-LI-IB-370	816
ASI-LI-IB-460	460	ASI-LI-IB-460	1014
ASI-LI-IB-510	510	ASI-LI-IB-510	1125
ASI-LI-IB-640	640	ASI-LI-IB-640	1411
ASI-LI-IB-820	820	ASI-LI-IB-820	1808
ASI-LI-IB-960	960	ASI-LI-IB-960	2117
ASI-LI-IB-1140	1140	ASI-LI-IB-1140	2514
ASI-LI-IB-1280	1280	ASI-LI-IB-1280	2822
ASI-LI-IB-1415	1415	ASI-LI-IB-1415	3120
ASI-LI-IB-1555	1555	ASI-LI-IB-1555	3429

ISOLATOR PROPERTIES		ISOLATOR PROPERTIES	
ISOLATOR TYPE	Outer Spring Colour	ISOLATOR TYPE	Outer Spring Colour
ASI-LI-IB-70	Green	ASI-LI-IB-70	Green
ASI-LI-IB-95	Green	ASI-LI-IB-95	Green
ASI-LI-IB-120	Green	ASI-LI-IB-120	Green
ASI-LI-IB-140	Yellow	ASI-LI-IB-140	Yellow
ASI-LI-IB-165	Yellow	ASI-LI-IB-165	Yellow
ASI-LI-IB-190	Yellow	ASI-LI-IB-190	Yellow
ASI-LI-IB-230	Blue	ASI-LI-IB-230	Blue
ASI-LI-IB-255	Blue	ASI-LI-IB-255	Blue
ASI-LI-IB-280	Blue	ASI-LI-IB-280	Blue
ASI-LI-IB-370	Blue	ASI-LI-IB-370	Blue
ASI-LI-IB-460	Beige	ASI-LI-IB-460	Beige
ASI-LI-IB-510	Beige	ASI-LI-IB-510	Beige
ASI-LI-IB-640	Red	ASI-LI-IB-640	Red
ASI-LI-IB-820	White	ASI-LI-IB-820	White
ASI-LI-IB-960	White	ASI-LI-IB-960	White
ASI-LI-IB-1140	White	ASI-LI-IB-1140	White
ASI-LI-IB-1280	White	ASI-LI-IB-1280	White
ASI-LI-IB-1415	White	ASI-LI-IB-1415	White
ASI-LI-IB-1555	White	ASI-LI-IB-1555	White

Notes:
 1. Specified Load Capacity is the max. allowable load for a single isolator and this value must not be exceeded.
 2. Isolator must be installed per installation instruction 9070.

POD

PERFORMANCE OUTLINE DRAWING

acrefine®

ENGINEERING

DESCRIPTION
ASI-LI-IB Type Vibration Isolator with 1" Deflection

PROJECT

DRAWING No. 8120-011

ENGINEER

DRAWN BY MMD

DATE 15.03.2017

PROJECT No.

SCALE NTS

REVISION

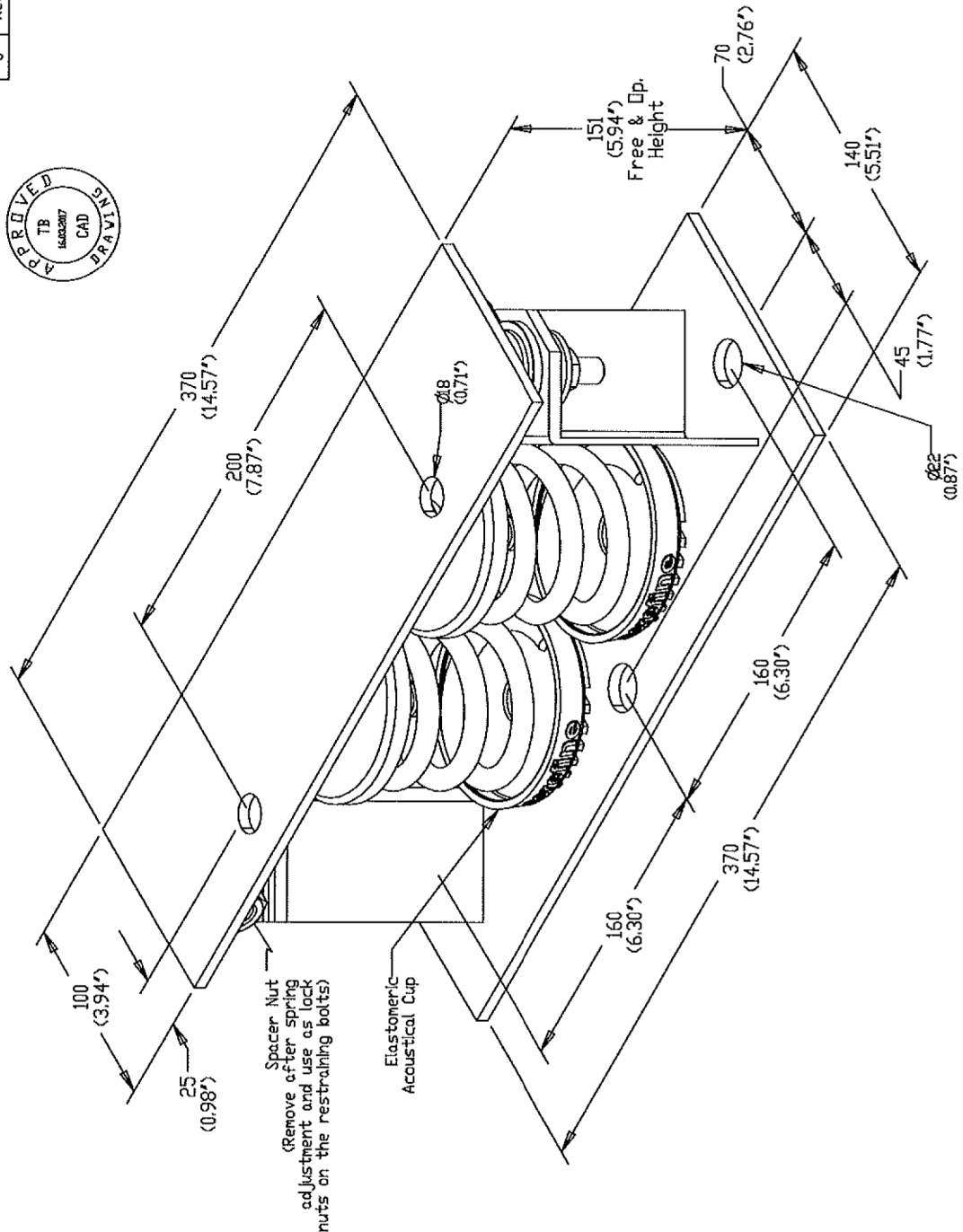
REV 0

DATE 15.03.17

MMD

TB

REV.	DESCRIPTION	DATE	MADE BY	APPL.
0	Released from Engineering.	15.03.17	MMD	TB



METRIC ISOLATOR TYPE	Load Capacity (kg)	Outer Spring Colour	Inner Spring Colour	Inner Spring Colour
ASI-L2-1B-1560	1560	Red	Red	-
ASI-L2-1B-1640	1640	White	-	-
ASI-L2-1B-1920	1920	White	Red	-
ASI-L2-1B-2280	2280	White	Orange	-
ASI-L2-1B-2560	2560	White	Brown	-
ASI-L2-1B-2830	2830	White	Orange	Red
ASI-L2-1B-3110	3110	White	Brown	Red

IMPERIAL ISOLATOR TYPE	Load Capacity (lb)	Outer Spring Colour	Inner Spring Colour	Inner Spring Colour
ASI-L2-1B-1560	3440	Red	Red	-
ASI-L2-1B-1640	3616	White	-	-
ASI-L2-1B-1920	4237	White	Red	-
ASI-L2-1B-2280	5027	White	Orange	-
ASI-L2-1B-2560	5645	White	Brown	-
ASI-L2-1B-2830	6240	White	Orange	Red
ASI-L2-1B-3110	6858	White	Brown	Red

Notes:
 1. Specified Load Capacity is the max. allowable load for a single Isolator and this value must not be exceeded.
 2. Isolator must be installed per Installation Instruction 9070.

POD	DESCRIPTION	ASI-L2-1B Type Vibration Isolator with 1" Deflection		
	PERFORMANCE OUTLINE DRAWING			
CUSTOMER	PROJECT	DRAWING No.	8120-012	REV
ENGINEER	LOCATION	DRAWN BY	MMD	0
DATE		DATE	15.03.2017	
PROJECT No.		SCALE	NTS	A3

acrefine
ENGINEERING

Acrefine Spring Hanger
Open Spring Vibration Isolation Hanger

AH-OS Type



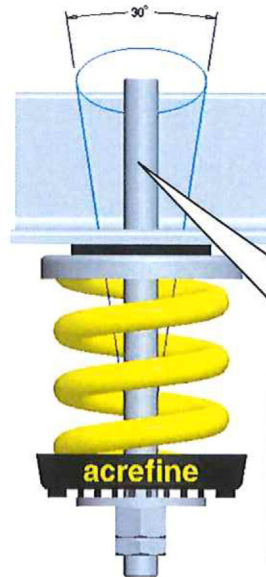
DESCRIPTION

Acrefine AH-OS type spring vibration isolation hangers are designed to minimize vibration and noise transmission from suspended equipment and piping. Spring design compensates for up to 15° rod misalignment in any direction.

Vibration isolation is achieved by free-standing laterally-stable steel springs. Springs are designed with 50% overload capacity and the lateral spring stiffness is greater than the vertical stiffness to assure stability. All springs are colour coded for easy identification and to promote correct installation.

KEY FEATURES

- ✓ Powder coated and colour coded springs
- ✓ Load capacity up to 1140 kg (2514 lb) on standard range
- ✓ Standard spring deflection of 25 mm (1") or 50 mm (2")
- ✓ Compensates for up to 30° rod misalignment
- ✓ Field interchangeable springs



Can be installed so that compensation for rod misalignment up to 15° in any direction is achieved at nominal spring deflection

APPLICATIONS

Acrefine AH-OS type spring vibration isolation hangers are suitable for suspended mechanical equipment that generates low frequency vibration i.e. in-line fans, exhaust fans, cabinet fans, etc. These hangers are also used on piping and ductwork which is in close proximity to mechanical equipment.

AH-OS type vibration isolation hangers are available in 25 mm (1") and 50 mm (2") deflection as a standard. The load range is from 7 kg (15 lb) to 1140 kg (2514 lb). For higher deflection and/or load capacities please contact us.



TESTED & CERTIFIED PRODUCTS



ANSI/ASHRAE Standard 171-2008
Method of Testing Seismic Restraint Devices for HVAC&R Equipment

