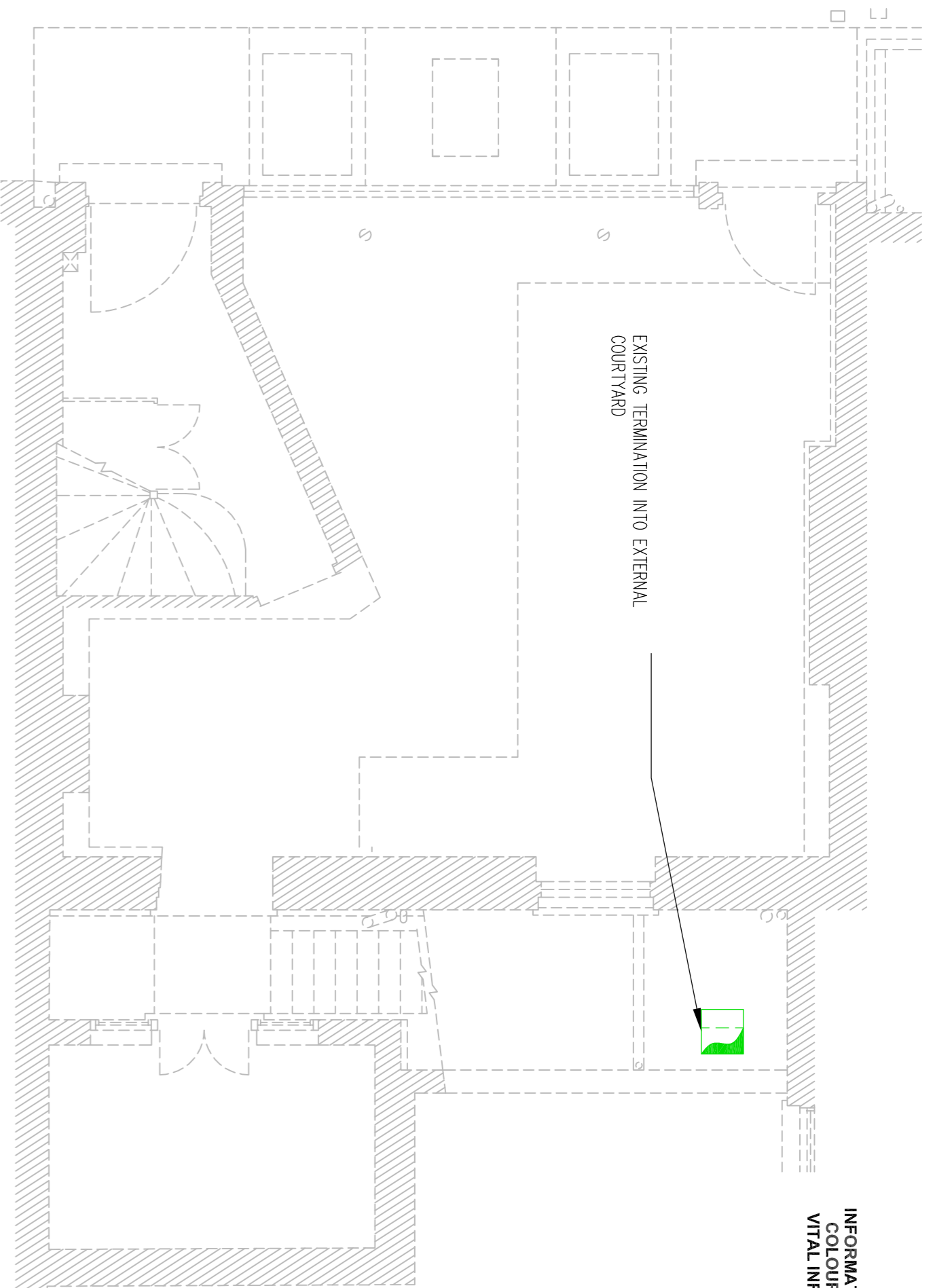
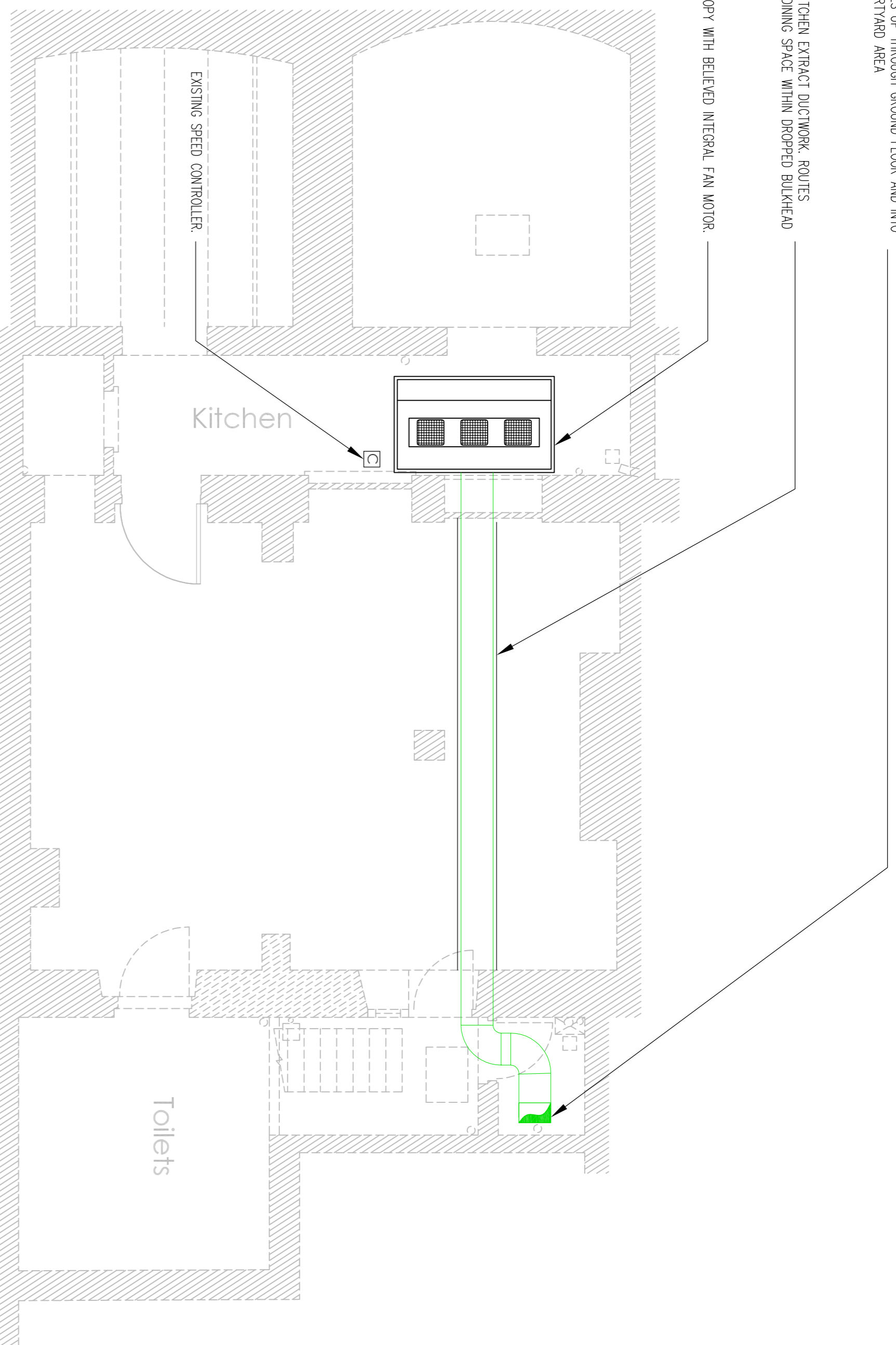


EXISTING 250x400mm KITCHEN EXTRACT DUCTWORK, ROUTES THROUGH RESTAURANT DINING SPACE WITH DROPPED BULHEAD

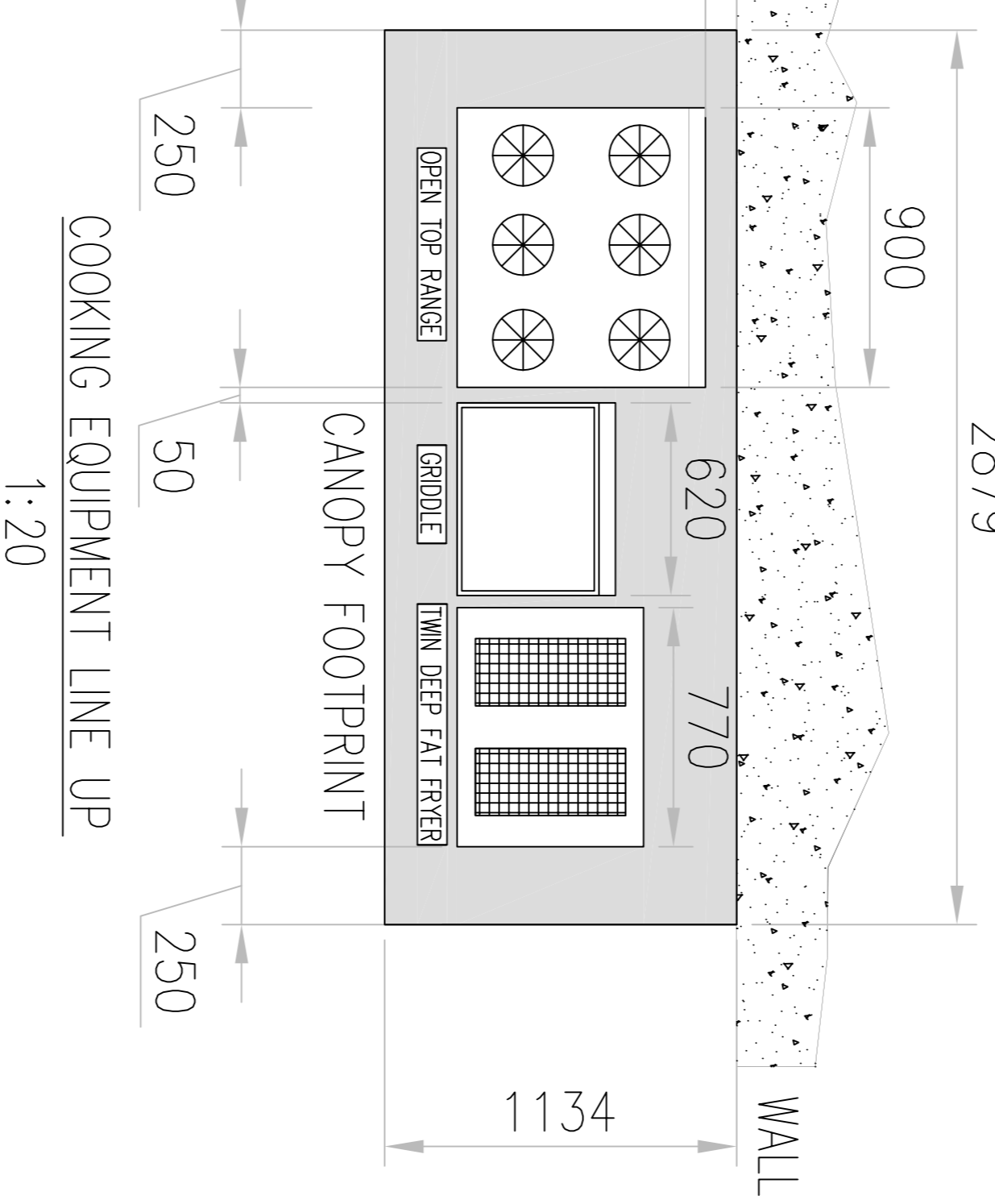
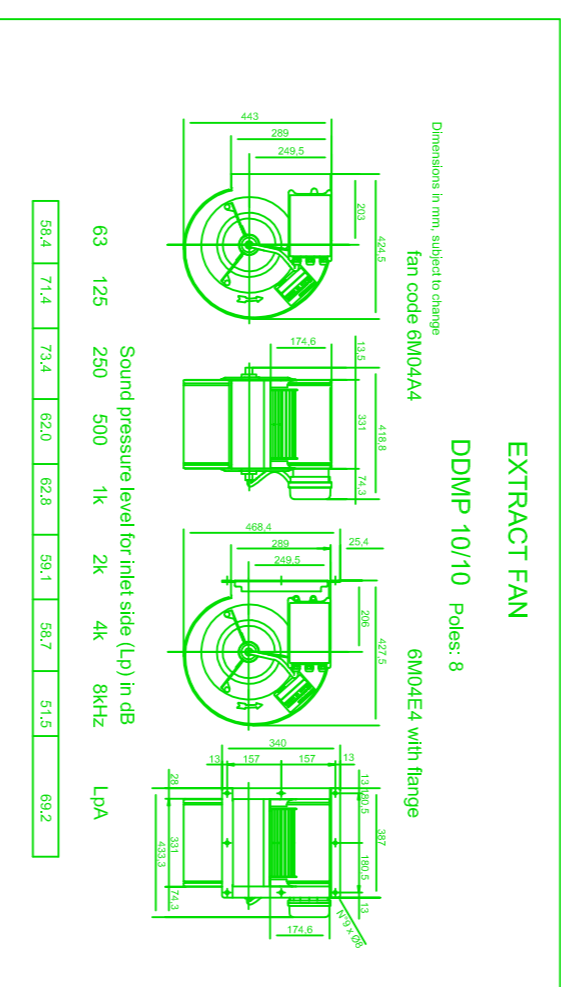
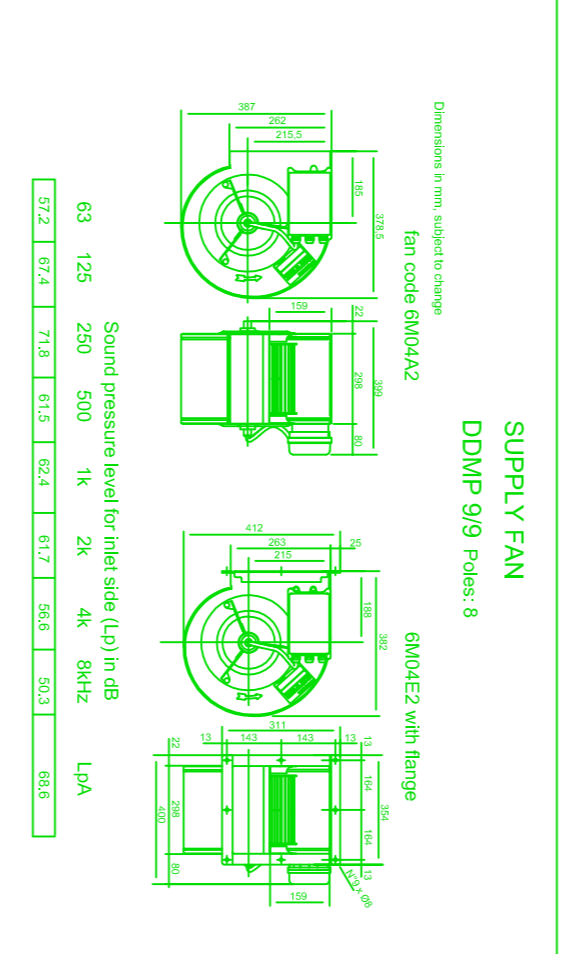
EXISTING CANOPY WITH BELIEVED INTEGRAL FAN MOTOR



GENERAL ODOUR RISK ASSESSMENT

RECEPTOR	RECEPTOR TYPE	RISK LEVEL
Neighbours	Residential	Medium
Public	Commercial	Low
Other	Commercial	Low
TOTAL		28

NOTE: THIS ASSESSMENT IS BASED ON THE ASSUMPTIONS MADE IN THE DESIGN AND THE INFORMATION PROVIDED. IT DOES NOT TAKE INTO ACCOUNT ANY FUTURE DEVELOPMENTS OR CHANGES TO THE SITE. THE DESIGNER ACCEPTS NO LIABILITY FOR ANY DAMAGE OR LOSS OF PROFITS ARISING FROM THE USE OF THIS ASSESSMENT.



EXISTING GROUND FLOOR ARRANGEMENTS

EXISTING BASEMENT ARRANGEMENTS

WARNING

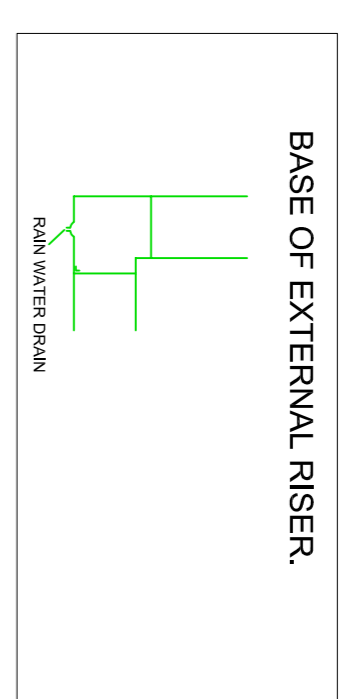
INFORMATION ON THIS DRAWING IS PRODUCED USING COLOURS IF DRAWING IS NOT PRINTED IN COLOUR VITAL INFORMATION MAY BE OBSCURED OR MISSING

EXISTING EXTRACT TERMINAL

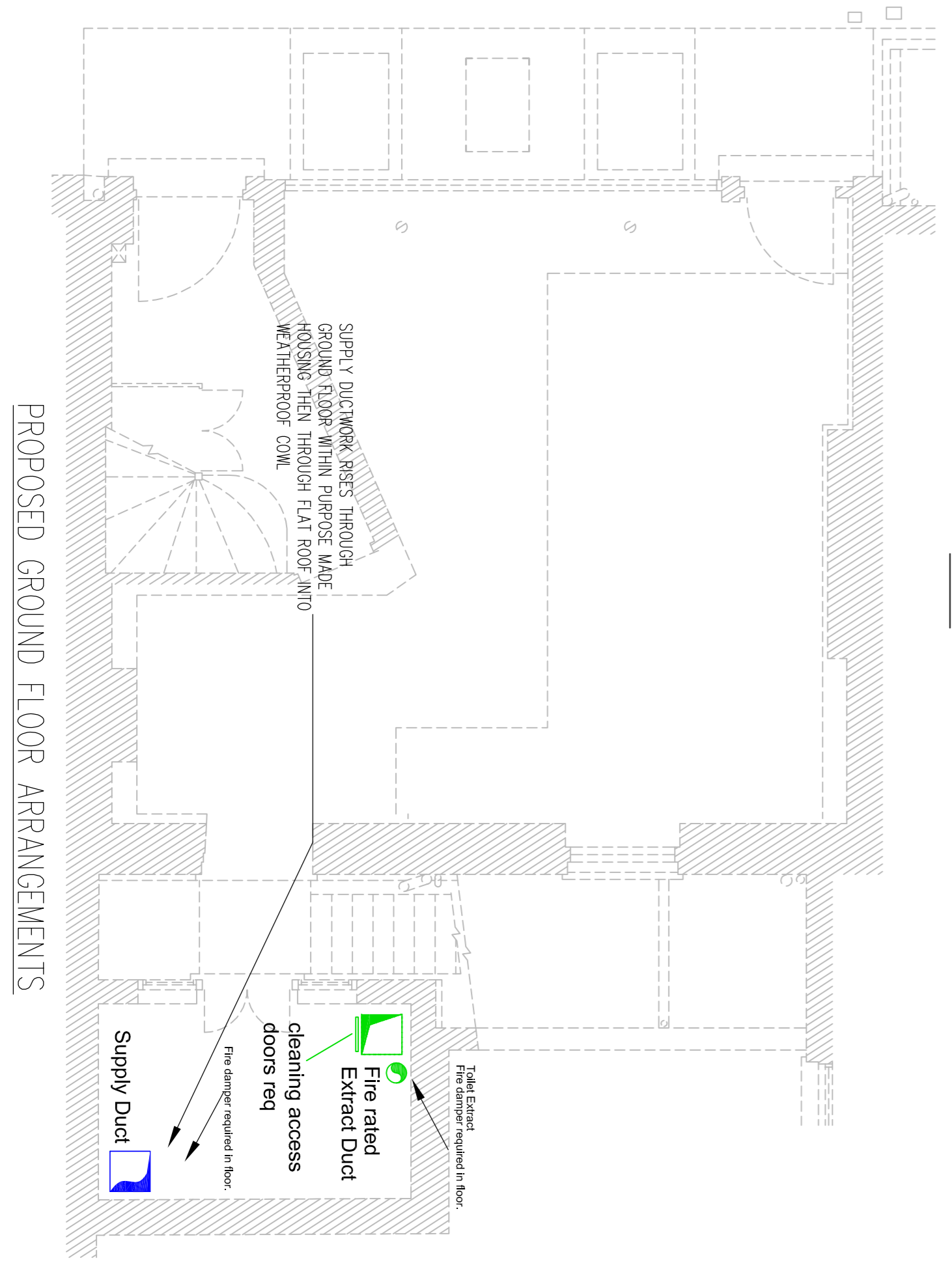
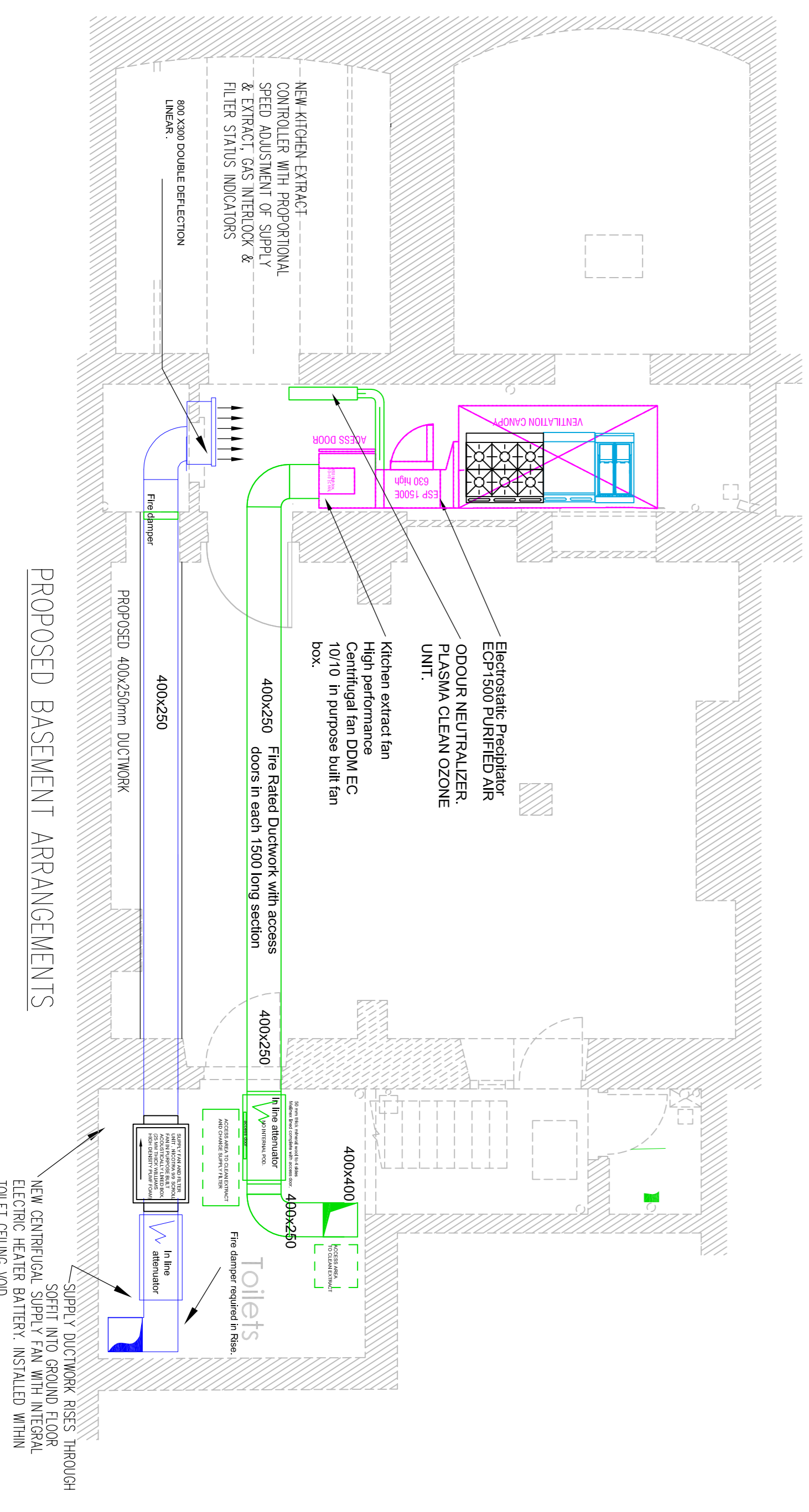
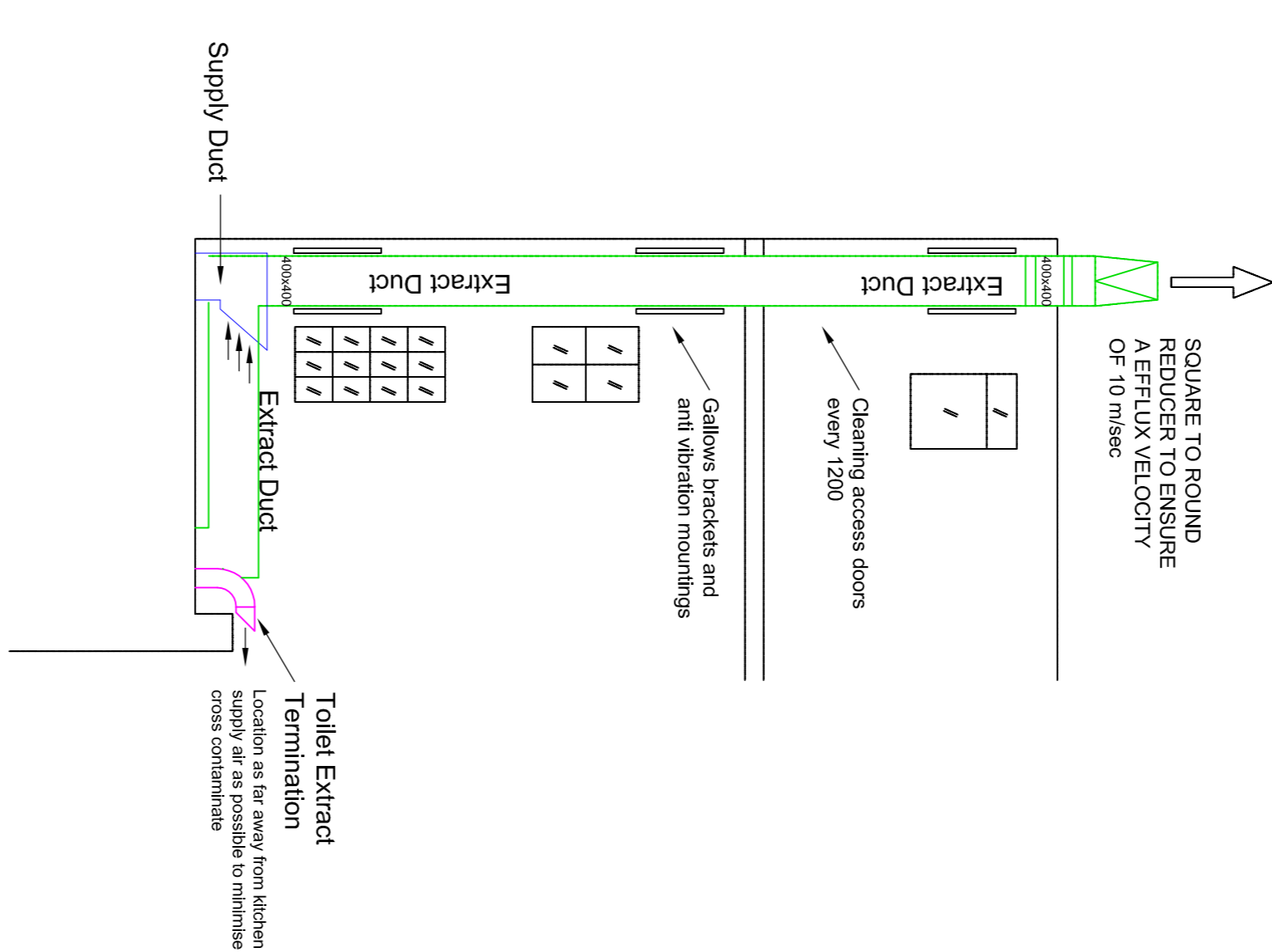
METHOD 1 - THERMAL CONNECTION - DW/172

REFERENCE	FIELD	EQUAL	COEFFICIENT
OPEN TOP RANGE OVEN	GAS	0.9x0.8	0.35
TWIN DEEP FAT Fryer	GAS	0.6x0.7	0.45
MILD STEEL GRIDDLE	GAS	0.6x0.51	0.3
OVERALL FLOW RATE (COEFFICIENT x FOOTPRINT)			0.38 M ³ /S
CANOPY FACTOR OVERHEAD WALL - CLOSED BOTH ENDS			1.15
OVERALL FLOW RATE	0.536 x 1.15		0.616 M ³ /S or 616 l/s

250x400mm DUCTWORK @ 6.4 m/s VELOCITY PROVIDES 600 l/s EXTRACT VOLUME FLOW RATE
450 l/s MAKE UP AIR (75%) WILL REQUIRE 250x400mm DUCTWORK FOR A VELOCITY OF 4.8 m/s



Rear View



PRELIMINARY

CLIENT: BEDFORD ESTATES
SCHEME: 43 STORE STREET LONDON
TITLE: PROPOSED REPLACEMENT KITCHEN VENTILATION SYSTEM

SCALE: 1:100 @ A1
DRAWN BY: KM
CHECKED BY: PDU

DATE: MAY 2018

DATE: 14.05.18
DESCRIPTION: PRELIMINARY ISSUE

Rev: 1
Dwn: Date: Description

PURPOSE OF ISSUE: PRELIMINARY

© THIS DRAWING IS THE PROPERTY OF ITD CONSULTANTS LTD AND SHALL NOT BE REPRODUCED OR COPIED IN ANY FORM OR BY ANY MEANS WITHOUT THE WRITTEN PERMISSION OF ITD CONSULTANTS LTD.

ITD CONSULTANTS LTD
www.itdconsultants.co.uk
Tel: 023 9243 5050
e-mail: enq@itdconsultants.co.uk

CONSULTANTS LOW CARBON CONSULTANTS

DRAWING NO. 18/2540/M01 REVISION P1