



## 4 Proposal / Interior design brief

### Melia White House Hotel

Interior Refurbishment of the following areas of the White House Hotel Ground Floor.

Zona B: L'Albufera Restaurant,

Zone A: Entrance Lobby, reception, bar-restaurant, existing office space, dry Martini bar.

The Interior refurbishment objective is to reform the L'Albufera restaurant with a new open kitchen space and to change the entire reception, Lobby and office space into a new space with a new bar, as well as up to three new multipurpose meeting rooms.

The proposal opens up the former office space to create a new bar open toward the main lobby and reception. The existing restaurant is also opened up towards the current kitchen creating an open kitchen and buffet space.

The entire reception area is also changed and opened up.

Another main purpose of the refurbishment will be to provide new mechanical and ventilation services, raising the ceiling heights and increasing the interior volume of the rooms.

#### Suspended Ceilings and Cornices

The new ceiling is taking advantage of the total height of the ground floor, gaining up to 1500 mm in Zone A. The new ceiling resembles the existing ceiling geometry, providing a more minimal approach by omitting the existing cornices.

The new ceiling is seen as an enhancement, providing better lighting with perimetrical light coves while at the same time respecting the classical approach of the design.

#### Lighting

In zone A and B all the lighting is adapted according to the new uses of the space. In order to provide a better lighting concept, the incorporation of suspended lamps and new floor and table lamps help us create different environments.

#### Wall Finishes

The existing panelling is retained where possible and painted in pale grey colour, which together with the white painted walls gives a modern touch to the classic design. Wherever there are new walls a new panelling with lacquered skirting resembling the existing is proposed in order to give a unified impression for the whole design.

A floor to ceiling glass wall is also proposed separating the meeting rooms area from the rest of the building.

#### Floor Finishes

The existing floors have no historic or architectural value. We propose a unified Bolon vinyl flooring.

#### Movable Walls

Three movable walls are proposed dividing the meeting rooms into two smaller spaces, and separating them from the corridor. Movable walls have a Sand gladstone Oak timber finish, and they can be folded and stored into a special cabinet when not in use.

Please note that moving walls have been previously used in ground floor Zone C Conference Room and Chester Suite.

#### New Open Kitchen

In the area previously occupied by a restaurant kitchen, we propose creating an open kitchen communicated with the new Arado restaurant.

#### Interior New Doors

All new doors proposed resemble the existing timber doors.

#### Furniture & Colour Palette

All the furniture is modern and with straight lines giving an elegant and sophisticated touch of the whole of the space and creating a comfortable interior space. The materials are noble like oak and warm generating carpet areas around the decorative chimneys.

The colour palette is neutral, focused on the grey palette and the black colour.

#### New Bathroom Facilities

#### Mechanical, Electrical and Plumbing Services

DO NOT SCALE FROM THIS DRAWING. ALL DIMENSIONS ARE TO BE CHECKED ON SITE PRIOR TO BUILD. DIMENSIONAL DIFFERENCES TO BE CONFIRMED WITH THE ARCHITECT. THIS DRAWING IS TO BE READ IN CONJUNCTION WITH ALL CONSULTANTS INFORMATION. MACKAY AND PARTNERS LLP RETAIN THE COPYRIGHT OF ALL INFORMATION WITHIN THIS DRAWING.

Rev	Description	Date
-----	-------------	------

## Key Plan

### Drawing Status

## PLANNING

used only for purpose indicated

**+Mackay  
Partners**

## ARCHITECTS & DESIGNERS

Florin Studios, Florin Court, 6-9 Charterhouse Square  
London EC1M 6EY tel +44 (0)207 608 1177  
e mail: [contact@mackayandpartners.co.uk](mailto:contact@mackayandpartners.co.uk)

Job Title

## White House Hotel

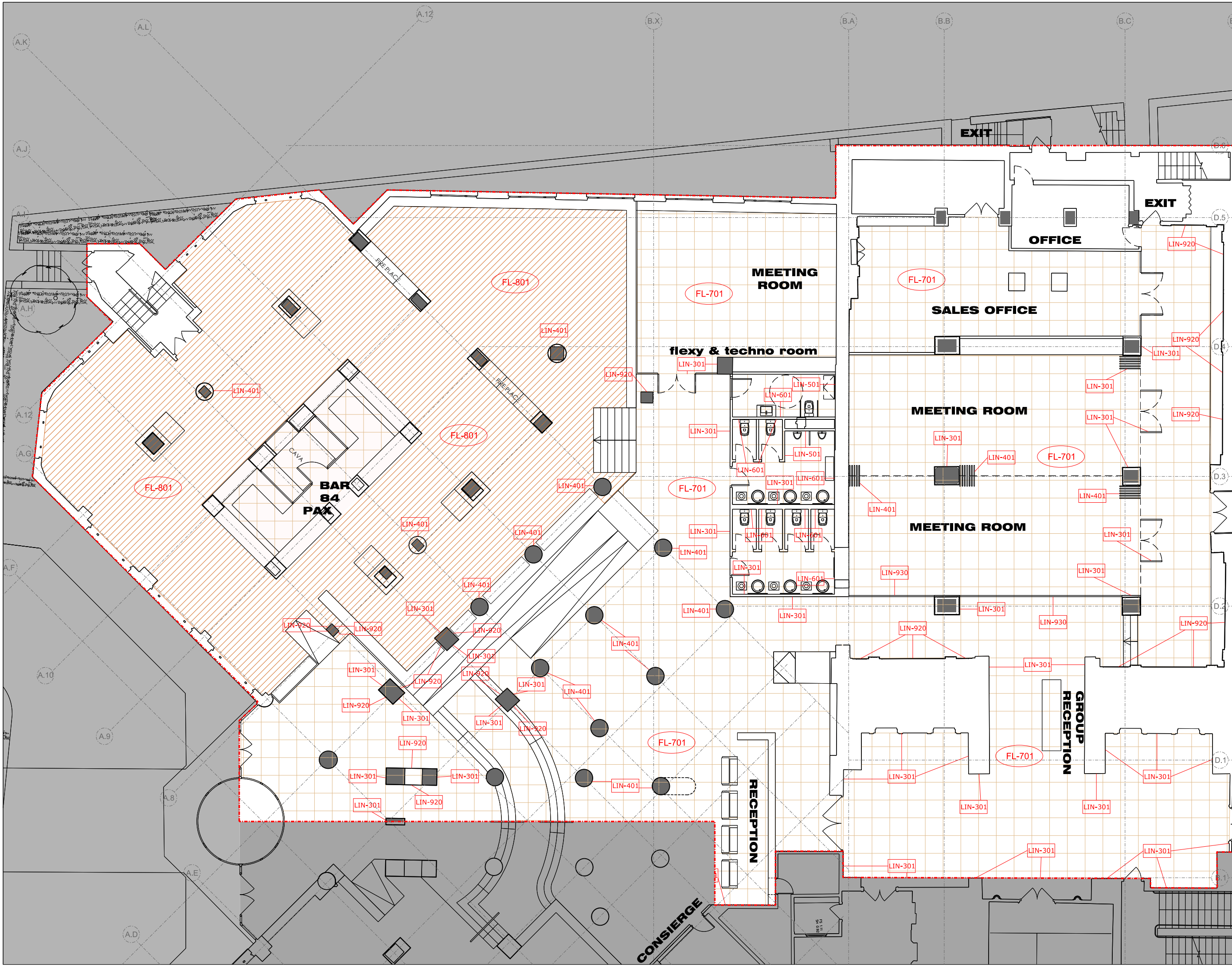
Drawing Title

EXISTING  
GROUND FLOOR  
FULL PLAN

Scale @ A1 1:200 Scale @ A3 1:400 Drawn by MT

ate	17/07/2018	Checked by KM
-----	------------	---------------

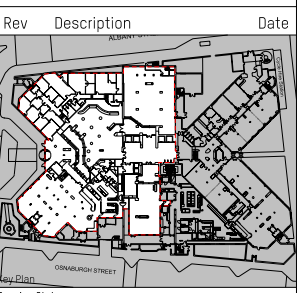
Drawing No.	Rev.
612.17_EX_0200_200	-



DO NOT SCALE FROM THIS DRAWING. ALL DIMENSIONS ARE TO BE CHECKED ON SITE PRIOR TO BUILD. DIMENSIONAL DIFFERENCES TO BE CONFIRMED WITH THE ARCHITECT. THIS DRAWING IS TO BE READ IN CONJUNCTION WITH ALL CONSULTANTS INFORMATION, MACKAY AND PARTNERS LLP RETAIN THE COPYRIGHT OF ALL INFORMATION WITHIN THIS DRAWING.

- Floor Finishes**
- FL-801 / Meister lindura HD300 2200x270mm Natural light oak / 8521 / brushed matt lacquered
  - FL-701 / White Marble 800x800mm Stairs and ramps will be white marble on appropriate format
- Wall Finishes**
- LIN-301 / Meister lindura HD300 2200x270mm Natural light oak / 8521 / brushed matt lacquered / Vertical direction
  - LIN-401 / Chillewich weave / IKAT, colour BONE
  - LIN-501 / Fondovall RES ART collection - Pottvery finish
  - LIN-601 / Ceramica Antiga Oxford series 50x500mm / Taupe TBC / Vertica Direction, continuous joint
  - LIN-920 / Silver Mirror
  - LIN-930 / Glass Wall

**DRAFT**



Rev Description Date  
Issued only for purpose indicated

**PLANNING**

**Mackay + Partners**

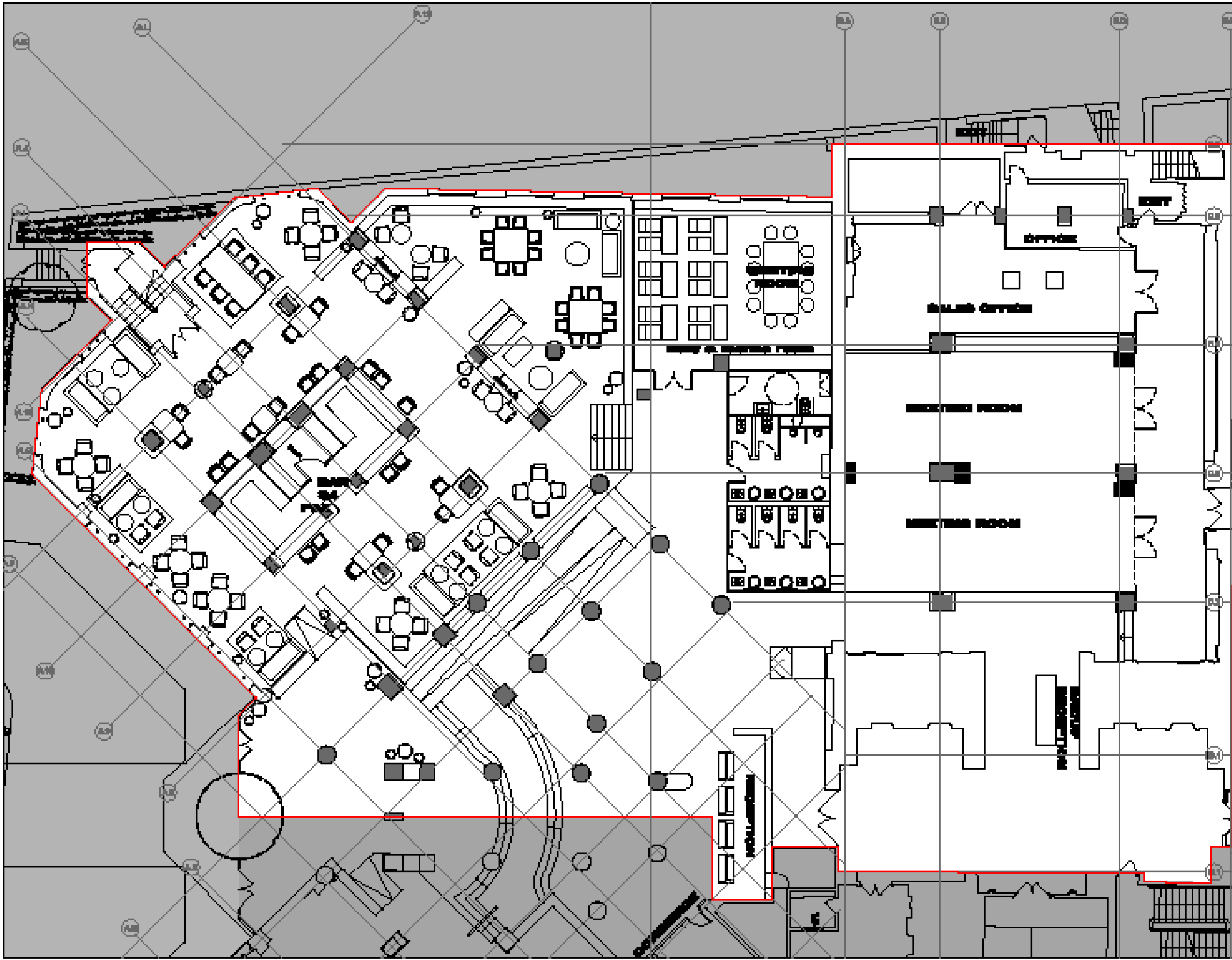
**ARCHITECTS & DESIGNERS**  
Florin Studios, Florin Court, 6-9 Charterhouse Square  
London EC1M 6EY tel: +44 (0)207 808 1177  
e mail: contact@mackayandpartners.co.uk

Job Title  
**White House Hotel**

Drawing Title  
**PROPOSED  
GROUND FLOOR / ZONE A  
PLANS / FINISHES**

Scale @ A0 1:50 Scale @ A2 1:100 Drawn by MT  
Date 17/07/2018 Checked by KM  
Drawing No. 612.17\_PL\_0600\_301 Rev. -





**DRAFT**



PLAN VIEW

**Mackay  
Partners**

ARCHITECTURE & INTERIOR  
PLANNING, DESIGN & CONSTRUCTION  
SERVICES

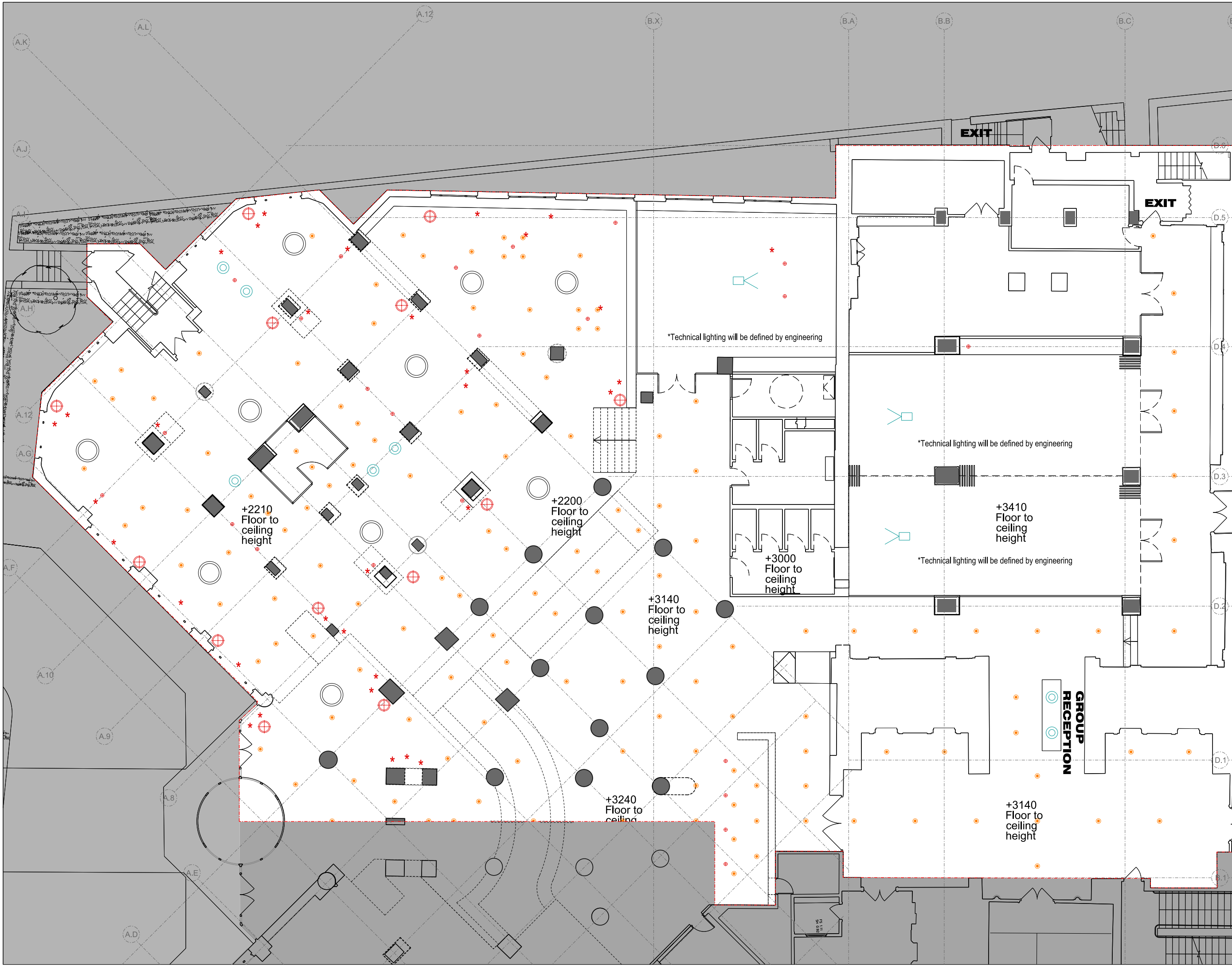
Website: [www.mackaypartners.com](http://www.mackaypartners.com)

PROJECT  
OFFICE PLANS / GENERAL  
PLANS / FINISHES

DATE	12/10/10	BY	MM
REV	27/06/2010	BY	MM
FILE	012-17_PL_0001.dwg		





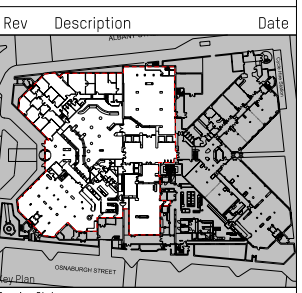


DO NOT SCALE FROM THIS DRAWING. ALL DIMENSIONS ARE TO BE CHECKED ON SITE PRIOR TO BUILD. DIMENSIONAL DIFFERENCES TO BE CONFIRMED WITH THE ARCHITECT. THIS DRAWING IS TO BE READ IN CONJUNCTION WITH ALL CONSULTANTS INFORMATION, MACKAY AND PARTNERS LLP RETAIN THE COPYRIGHT OF ALL INFORMATION WITHIN THIS DRAWING.

- Embedded Spotlight - Golden Interior Finish (Ceiling Height)
  - Spotlight Tracking System (Ceiling Height)
  - LED 2700 K (Ceiling Height)
  - Hanging Lamp (Height TBD)
  - Floor Lamp
  - Table Lamp
  - Projector
  - Electrified Element (Table Height)
  - Flowerpot with stick spotlight on soil (Floor Height)
- This information not definitive, could change with project development

- +300 mm between ceiling and structure
- +400 mm between ceiling and structure
- +600 mm between ceiling and structure

# DRAFT



Drawing Status  
Issued only for purpose indicated

PLANNING

## + Mackay Partners

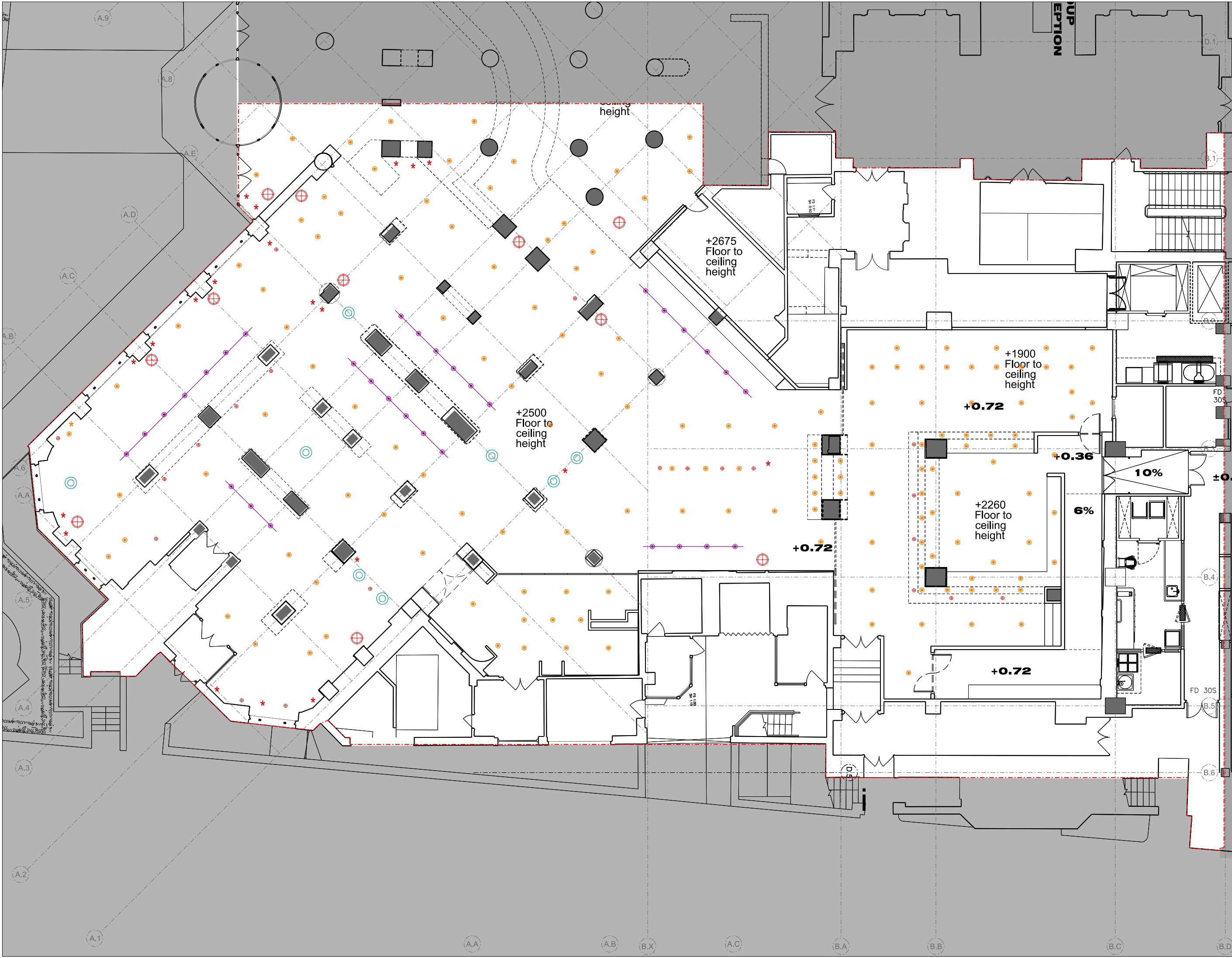
ARCHITECTS & DESIGNERS  
Florin Studios, Florin Court, 6-9 Charterhouse Square  
London EC3M 4BEY tel: +44 (0)207 608 1177  
e mail: contact@mackayandpartners.co.uk

Job Title  
White House Hotel

Drawing Title  
PROPOSED  
GROUND FLOOR / ZONE A  
PLANS / LIGHTING

Scale @ A0	1:50	Scale @ A2	1:100	Drawn by	MT
Date	27/06/2018	Checked by	KM		
Drawing No.	612.17_PL_0600_321	Rev.	-		



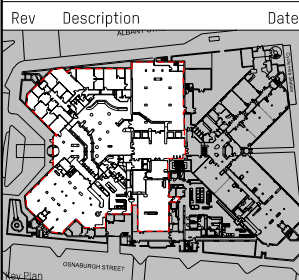


DO NOT SCALE FROM THIS DRAWING. ALL DIMENSIONS ARE TO BE CHECKED ON SITE PRIOR TO BUILD. DIMENSIONAL DIFFERENCES TO BE CONFIRMED WITH THE ARCHITECT. THIS DRAWING IS TO BE READ IN CONJUNCTION WITH ALL CONSULTANT'S INFORMATION. MACKAY AND PARTNERS LLP RETAIN THE COPYRIGHT OF ALL INFORMATION WITHIN THIS DRAWING.

- Embedded Spotlight - Golden Interior Finish (Ceiling Height)
  - Spotlight Tracking System (ceiling height)
  - LED 2700 K (Ceiling Height)
  - Hanging Lamp (Height TBD)
  - Floor Lamp
  - Table Lamp
  - Projector
  - Electrified Element (Table Height)
  - Flowerpot with stick spotlight on soil (Floor Height)
- This information is not definitive, could change with project development

- +300 mm between ceiling and structure
- +400 mm between ceiling and structure
- +600 mm between ceiling and structure

**DRAFT**



Drawing Status  
**PLANNING**  
Issued only for purpose indicated

**Mackay  
+  
Partners**

**ARCHITECTS & DESIGNERS**  
Florin Studios, Florin Court, 6-9 Charterhouse Square  
London EC1M 6EY tel +44 (0)207 608 1177  
e mail: contact@mackayandpartners.co.uk

Job Title  
**White House Hotel**

Drawing Title  
**PROPOSED  
GROUND FLOOR / ZONE B  
PLANS / LIGHTING**

Scale @ A0	1:50	Scale @ A2	1:100	Drawn by	JS
Date	26/06/2018	Checked by	KM	Rev.	-
Drawing No.	612.17_PL_0600_322				