

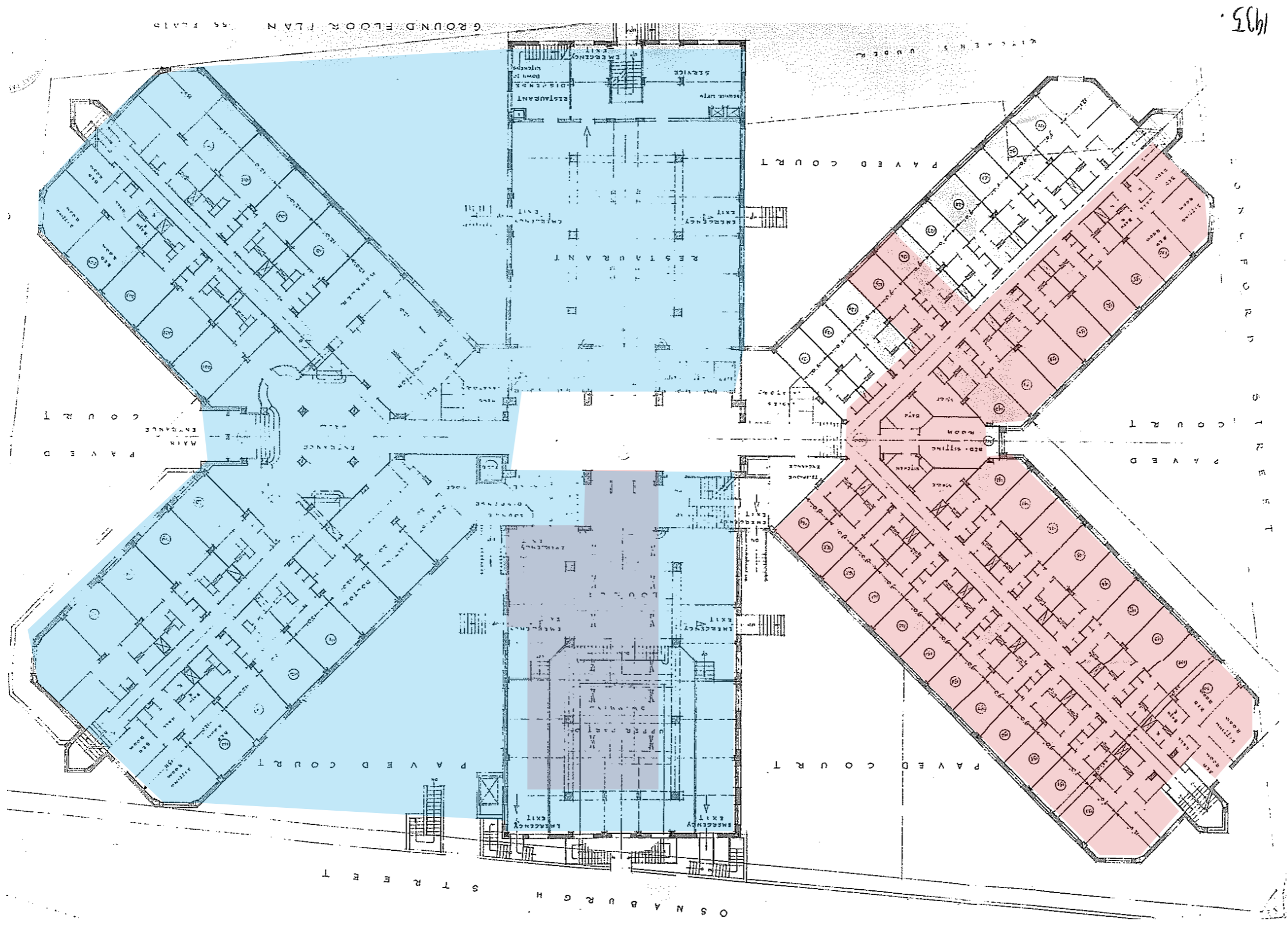
# 1.5 1935 Ground Floor Plan

Previous Scope of works  
Planning App 2017/2840/L

Current Scope of works

The White House. Original plan 1935. Photo from Camden Archives

18



# 1.5 1999-2001. Hotel Interior works Floor Plan

Previous Scope of works  
 Planning App 2017/2840/L

Current Scope of works

19



## 1.5 Historic Fabric Alterations / Comparison 1935-2001

### No alteration of the remaining Historic Fabric

20

The last refurbishment in 1999-2001 was the last one of a series of previous refurbishments made during the 1960's and 1970's when the building was converted into a hotel.

It appears that most of the original interior historic fabric in the Ground Floor was removed previously except for the external walls and the the structure. Risers and some parts of walls at their sides remain. Taking into account they were enclosing the original bathrooms, stacks and Soil Ventilation Pipes at GF, we assume that most of the original corridors walls were demolished when taking out the original pipeworks, sanitary ware and tiling for bathrooms.



## 1.5 Historic Fabric Alterations / Comparison 1935-2017

### No alteration of the remaining Historic Fabric

21

Due to several refurbishments, none of the original historic fabric appears to be preserved on the Ground Floor, except for the external walls and the structure.

Most of the original risers are unlikely to be original. According to Hotel Operator, Stacks and Soil ventilation pipes are not the original from 1935. The assumption is that the original ones were replaced during the 1970s. That means even the original fabric around the risers had to be removed at least partially in order to allow the new pipeworks to be fitted.

Therefore this proposal leaves the remaining historic fabric largely untouched.

