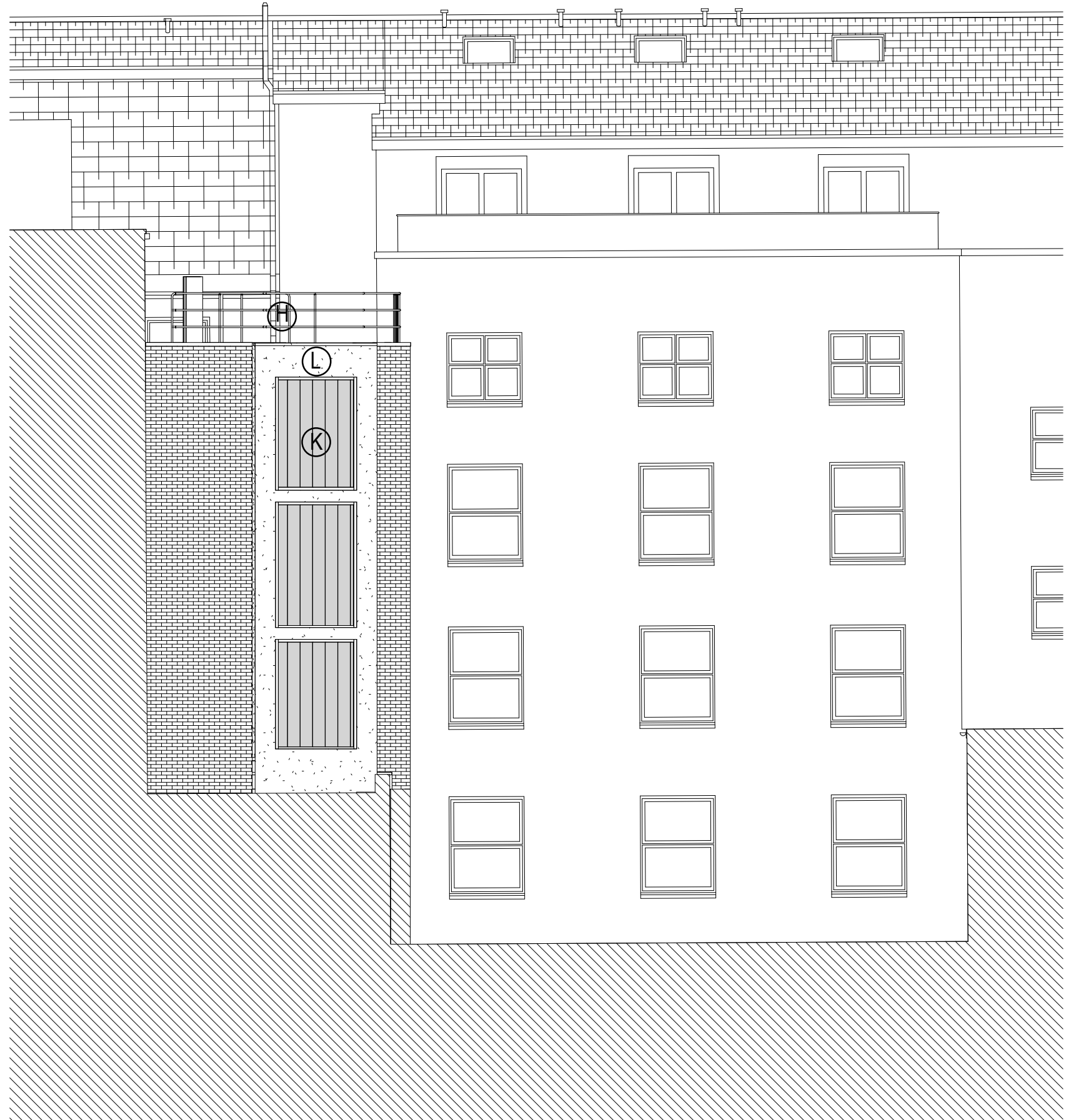


Key Plan



Elevation/Section A - As Proposed  
1 : 100



Elevation/Section B - As Proposed  
1 : 100

MATERIALS

- H New perimeter guard railings
- I New facing brickwork to match existing to approved sample
- J New double glazed timber casement window with lower pane obscurely glazed
- K New U-glass channel obscurely glazed light box
- L New insulated render system

E	Window materials revised	08.08.18
D	Window materials updated	25.07.18
C	Extents of Bristol House adjacent added, window fenestration, revised key plan updated and material notes amended	05.06.18
B	Granted 4th & 5th floor works removed, existing context amended.	29.03.18
A	Minor amendments following internal review	7.01.18
Revision	Description	Date



MORRISON DESIGN  
CHARTERED ARCHITECTS

St Alkmunds House, 103 Belper Road, Derby DE1 3ES  
T: 01332 363355 F: 01332 291441 E: architect@morrisondesign.co.uk

Job Title  
Proposed Lightwell & Bedroom Extension  
Doubletree by Hilton London West End

Crimson Hotels  
Drawing Title  
Elevations Sections A & B  
As Proposed

File Ref.:  
Plotter Settings:

Scale @ A1: As indicated Drawn: JJ CFI Date: 03.01.18

Job No.	Drawing No.	Revision
3829 D	215	E

PLANNING SUBMISSION

