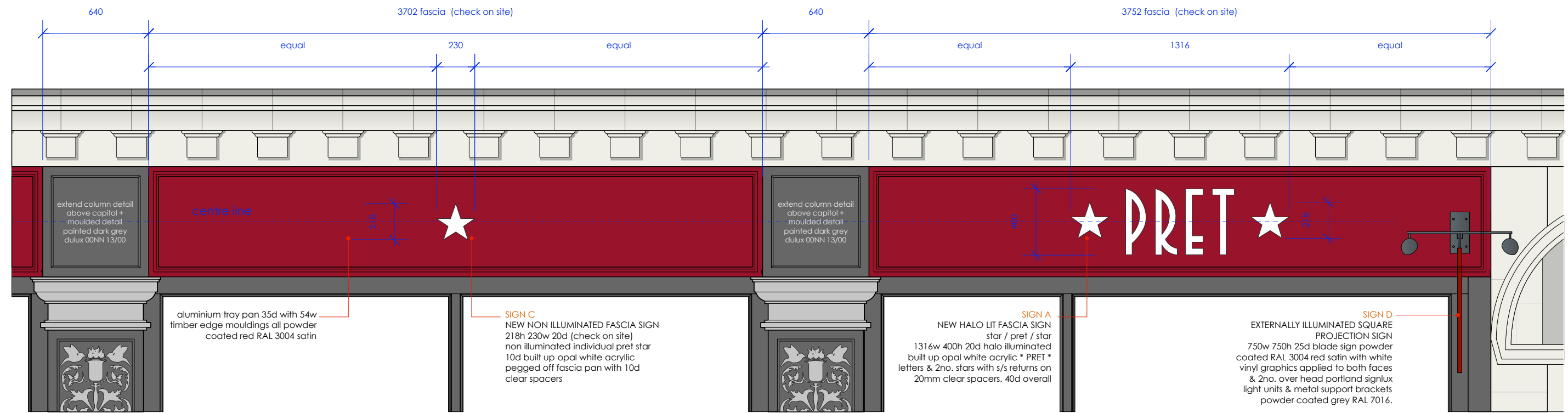


aluminium tray pan 35d with 54w timber edge mouldings all powder coated red RAL 3004 satin

SIGN A
NEW HALO LIT FASCIA SIGN
star / pret / star
1316w 400h 20d halo illuminated built up opal white acrylic * PRET * letters & 2no. stars with s/s returns on 20mm clear spacers. 40d overall

SIGN B
NEW NON ILLUMINATED FASCIA SIGN
2932w 200h 20d (check on site) non illuminated 'freshly prepared * finchley road' 10d built up opal white acrylic letters pegged off fascia on 10mm clear spacers.

SIGN A / SIGN B
NON ILLUMINATED
FASCIA SIGN
scale 1:25



aluminium tray pan 35d with 54w timber edge mouldings all powder coated red RAL 3004 satin

SIGN C
NEW NON ILLUMINATED FASCIA SIGN
218h 230w 20d (check on site) non illuminated individual pret star 10d built up opal white acrylic pegged off fascia pan with 10d clear spacers

SIGN A
NEW HALO LIT FASCIA SIGN
star / pret / star
1316w 400h 20d halo illuminated built up opal white acrylic * PRET * letters & 2no. stars with s/s returns on 20mm clear spacers. 40d overall

SIGN D
EXTERNALLY ILLUMINATED SQUARE PROJECTION SIGN
750w 750h 25d blade sign powder coated RAL 3004 red satin with white vinyl graphics applied to both faces & 2no. over head portland signlux light units & metal support brackets powder coated grey RAL 7016.

SIGN A / SIGN C / SIGN D
INTERNALLY ILLUMINATED
FASCIA SIGN
scale 1:25



All dimensions to be confirmed on site by Contractor. Structural works to be confirmed by Structural Engineer. All elements to comply with statutory requirements.

PROJECT
FINCHLEY ROAD
219 FINCHLEY ROAD LONDON NW3 6LP

TITLE
detailed signage 01

REVISIONS
A: fascia panel split at individual column line, internally illuminated signage changed to halo illuminated / non-illuminated signage.

Copyright Tanner Design Limited
2b/4b Gosport Street Lyngington Hampshire S041 9BE
tel. 01590 689609 email. studio@tannerdesign.co.uk
www.tannerdesign.co.uk

DRAWING No.
TD18-PM93-PL03.1

REVISION DATE SCALE @ A3
B 17.07.18 1:25

B: sign B / sign C details revised with 10mm pegged off spacers

