

BDP.

42 Bedford Square
Historic Doors - Condition Survey
February 2018
Rev A



Introduction

The following doors have been identified as having some historic significance and have previously been granted listed building consent under a discharge of conditions 2014/4634/L, 4b, to be retained, refurbished and redecorated. The doors are currently stored on site, in full protective wrapping, and have been unwrapped & photographed to illustrate current condition, as requested following the site meeting with Historic England and Camden on the 20th December 2017. All the doors are in a fairly good condition and only light repairs are likely to be necessary.

All doors excepting D3-03A need to be upgraded to ensure they achieve 30 minute fire resistance. This is to be undertaken by a specialist sub-contractor.

In addition doors are to have rebated acoustic threshold drop-seals to doors; and rebated perimeter seals inside door frames.

General Methodology

Carefully remove all existing ironmongery.

Remove all 'stuck on' and fixed signage with care to avoid surface damage to the timber doors.

Use water with a neutral pH, non-ionic soap with soft brushes or sponges to remove dirt deposits. Trials should be carried out on a sample door to be removed, and the results assessed before any further cleaning process is undertaken.

Local resin-based repairs to be carried out to minor damaged areas at the base of doors and where fixings have been removed and are not to be reinstated. To provide a flush surface.

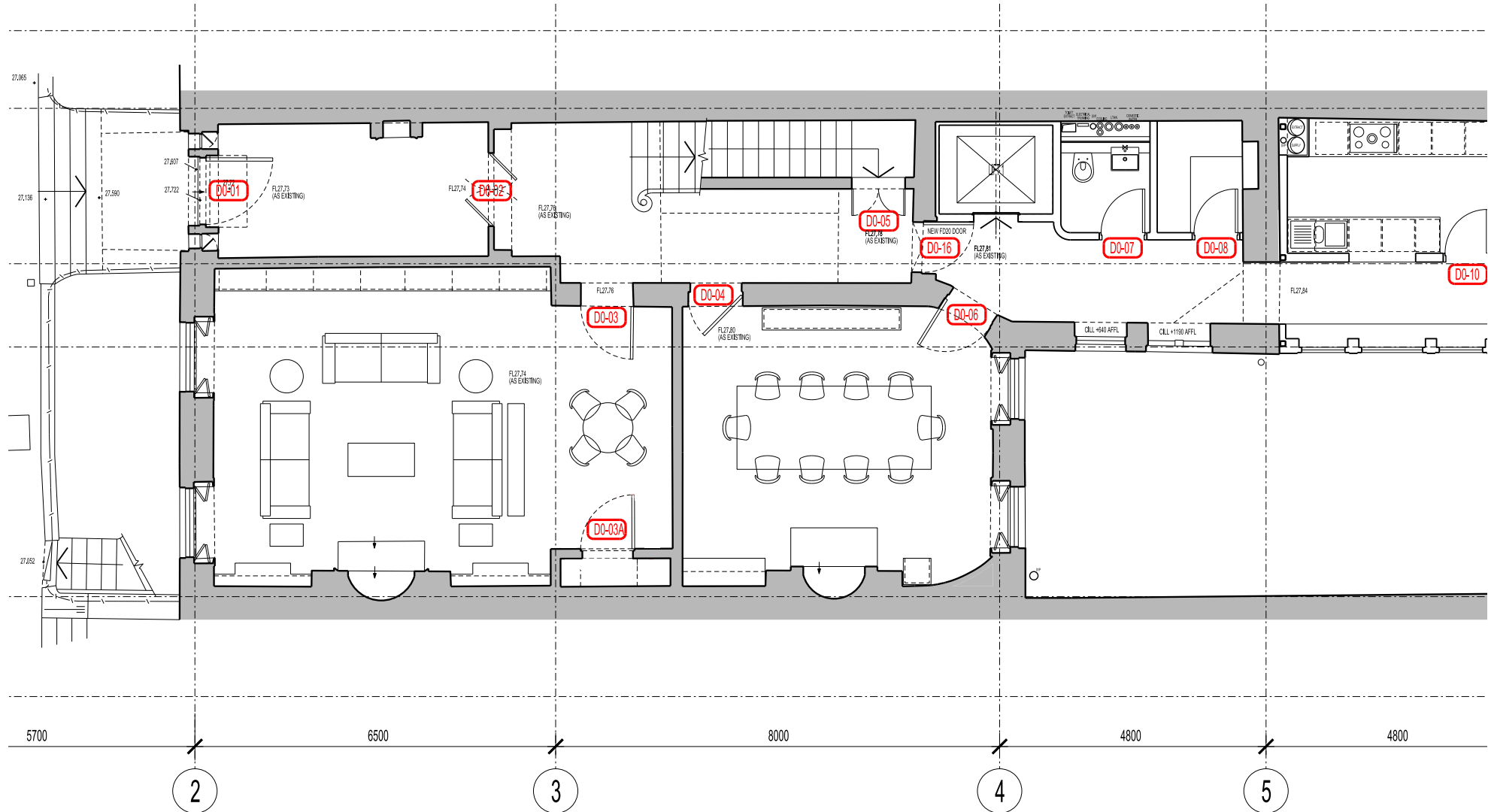
Where doors are Lacquer finish (except D0-02) - Carry out light sanding to all faces of door to provide key for new lacquer finish to match existing.

New ironmongery to be installed in accordance with approved schedule.

Ground Floor - Door Location Key Plan (as issued for condition 4b discharge)

Doors to be retained:

- D0-02
- D0-03
- D0-03A
- D0-04
- D0-06





D0-02



D0-03





D0-03A





D0-04



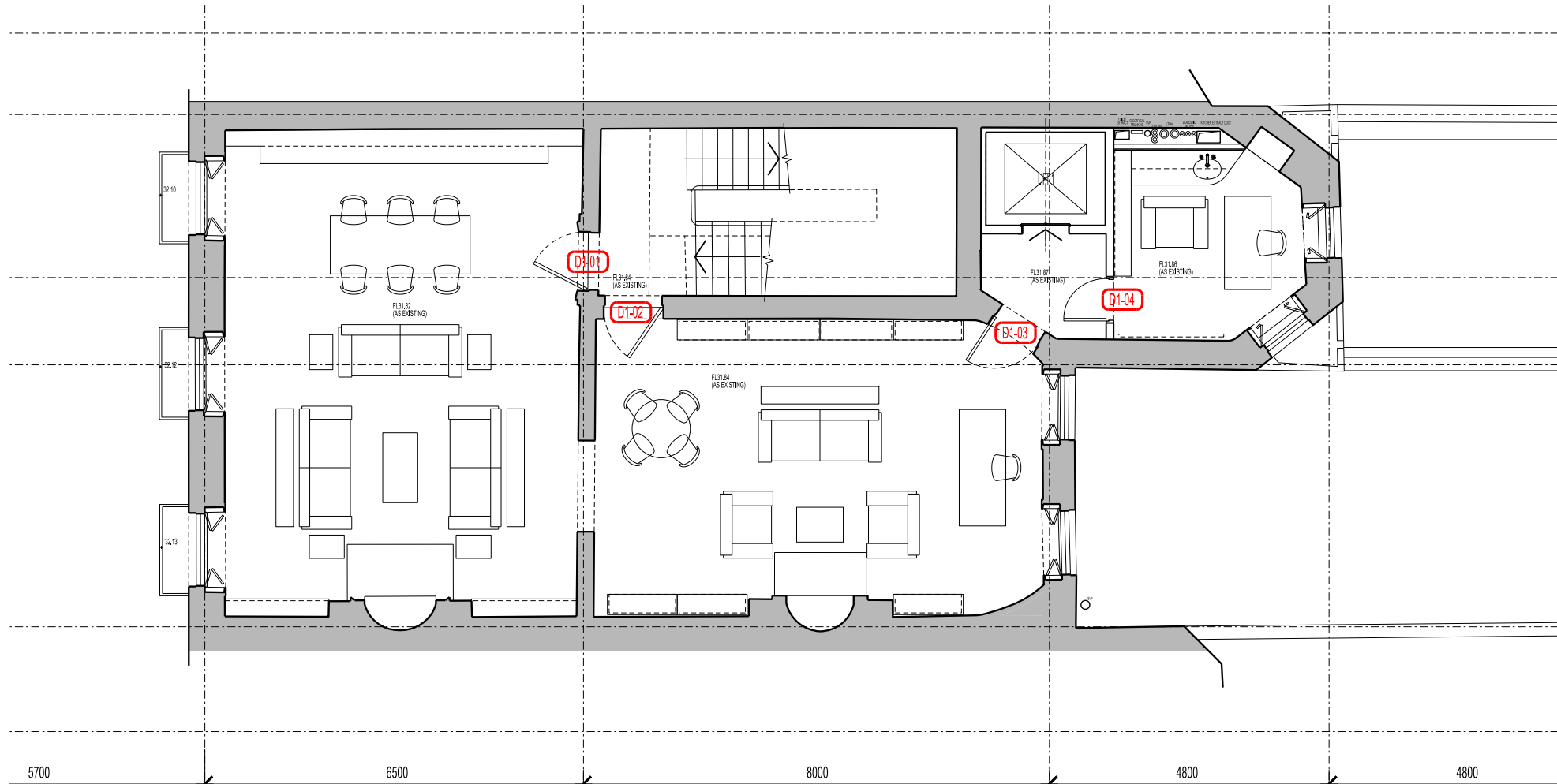
D0-06



First Floor - Door Location Key Plan (as issued for condition 4b discharge)

Doors to be retained:

- D1-01
- D1-02
- D1-03





D1-01
Door photographed upside down





D1-02





D1-03

