



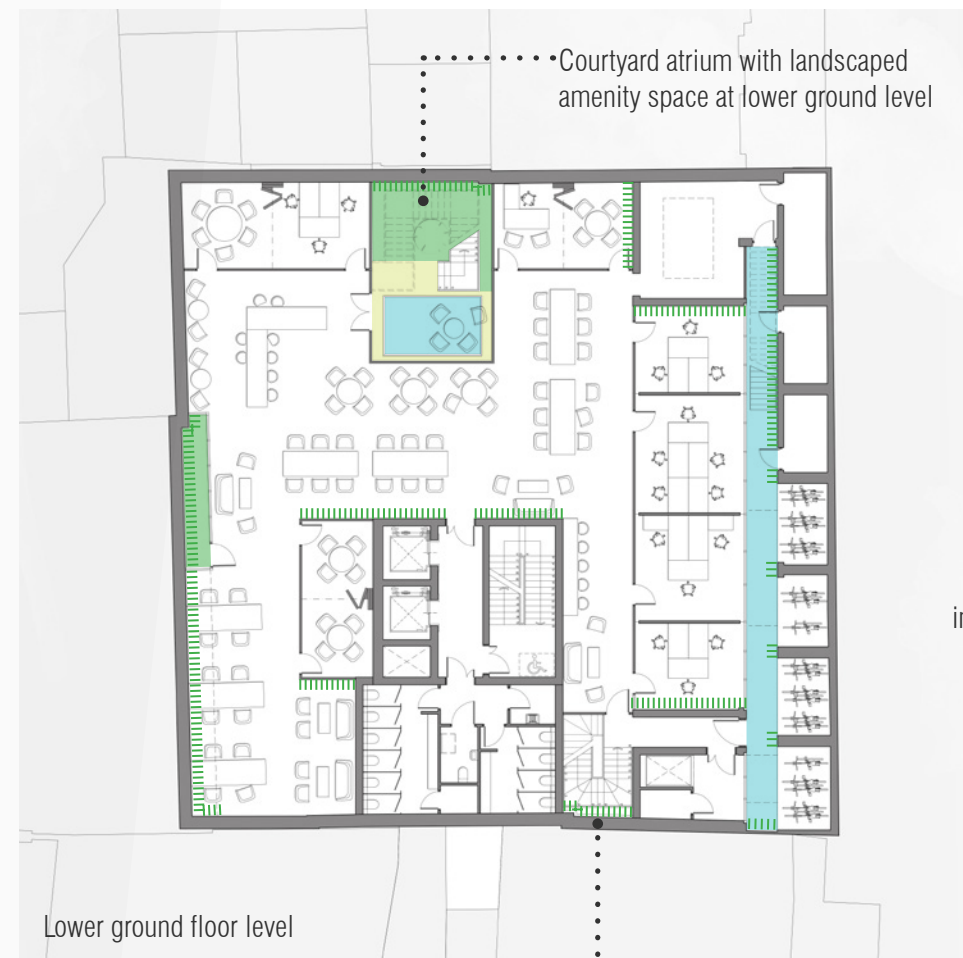
9.0 LANDSCAPING PROPOSALS

ambigram architects

image:
bar/cafe concept sketch

At present, the current buildings on the site 7abc Bayham Street provide no evident landscaping or quality public realm. On a constrained urban site, it will always be challenging to provide high quality external spaces but a carefully considered landscape strategy can help form a cohesive relationship with the surrounding townscape.

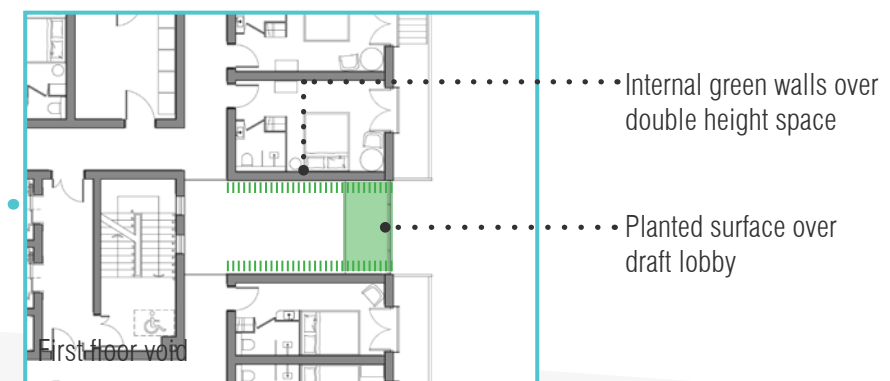
With limited external public realm, it is critical that landscape strategy for the proposals at 7abc Bayham Street maximise available space, using roof spaces to form landscape terraces and introducing green and moss walls both externally and internally to provide aesthetic interest as well as ecological value. The diagrams in this section, demonstrate an indicative strategy to introduce green character into scheme proposals, utilising lightwells and the northern courtyard atrium to bring natural light and colour into the lower levels of the building.



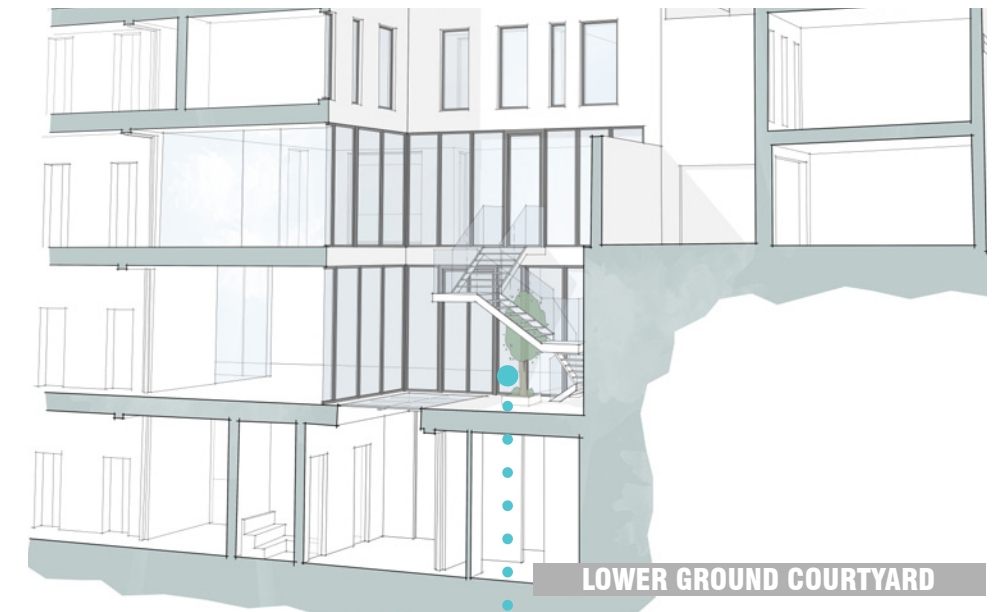
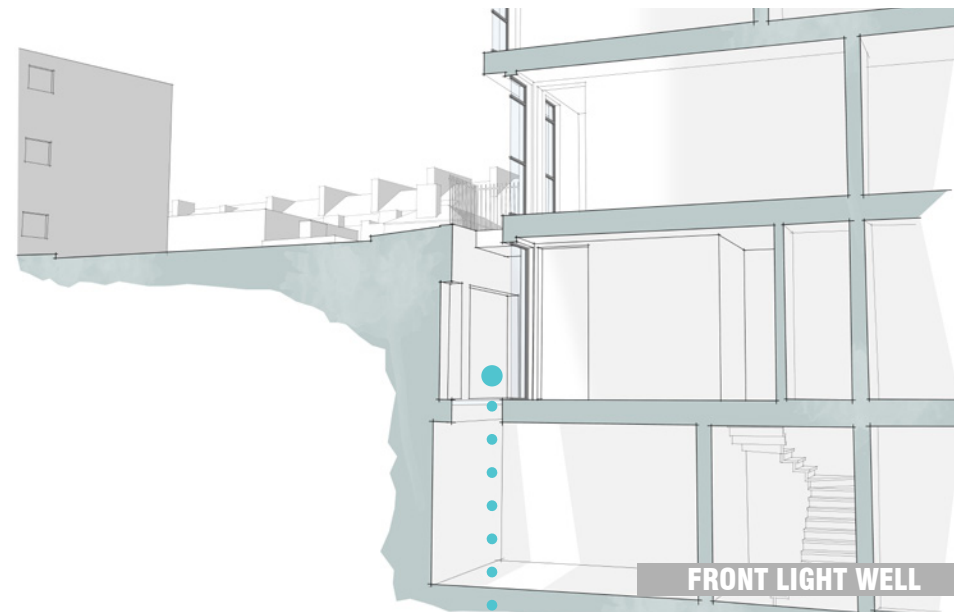
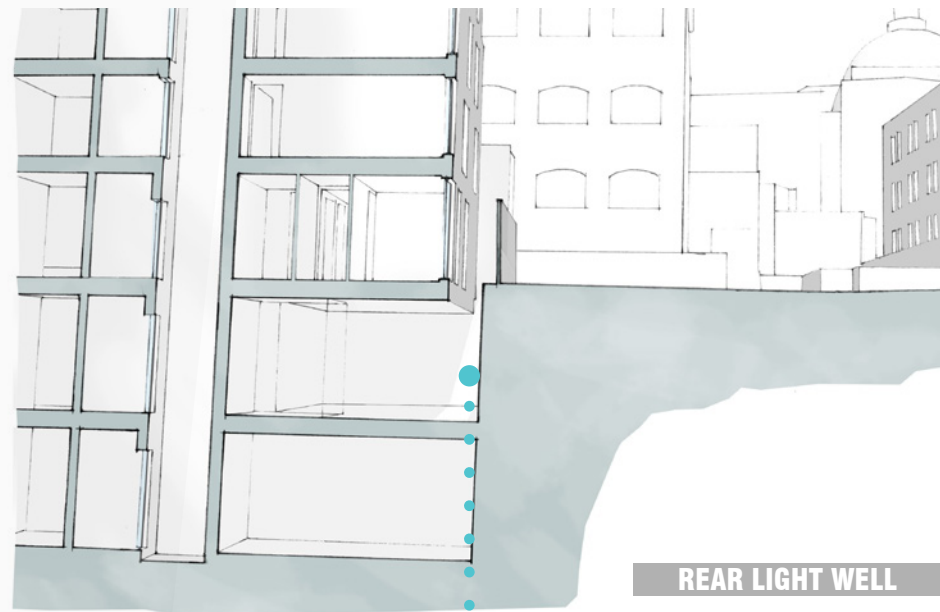
..... Dry moss walls to key internal spaces with limited natural daylight



Landscape terraces for visual amenity and ecological value without public access



- Green/moss wall
- Landscaped area
- Paved area
- Glass block floor



Lightwells to the site boundaries bring light into the lower ground floor but visual interest and colour is introduced with the creation of green walls on the interior walls below light wells to allow vibrant spatial quality within the office environment at this level.

The front light well provides access as well as light and ventilation to the lower ground floor. A structural perforated metal stair will allow light penetration whilst planted interior walls will create visual interest. A glass block floor will allow diffused light into the conference spaces at basement level.

The courtyard on the northern site boundary will become a visual centrepiece to the bar/cafe and office spaces at ground and lower ground floor. This will form a striking green atrium with retractable glass roof, providing amenity space and vertical circulation.

