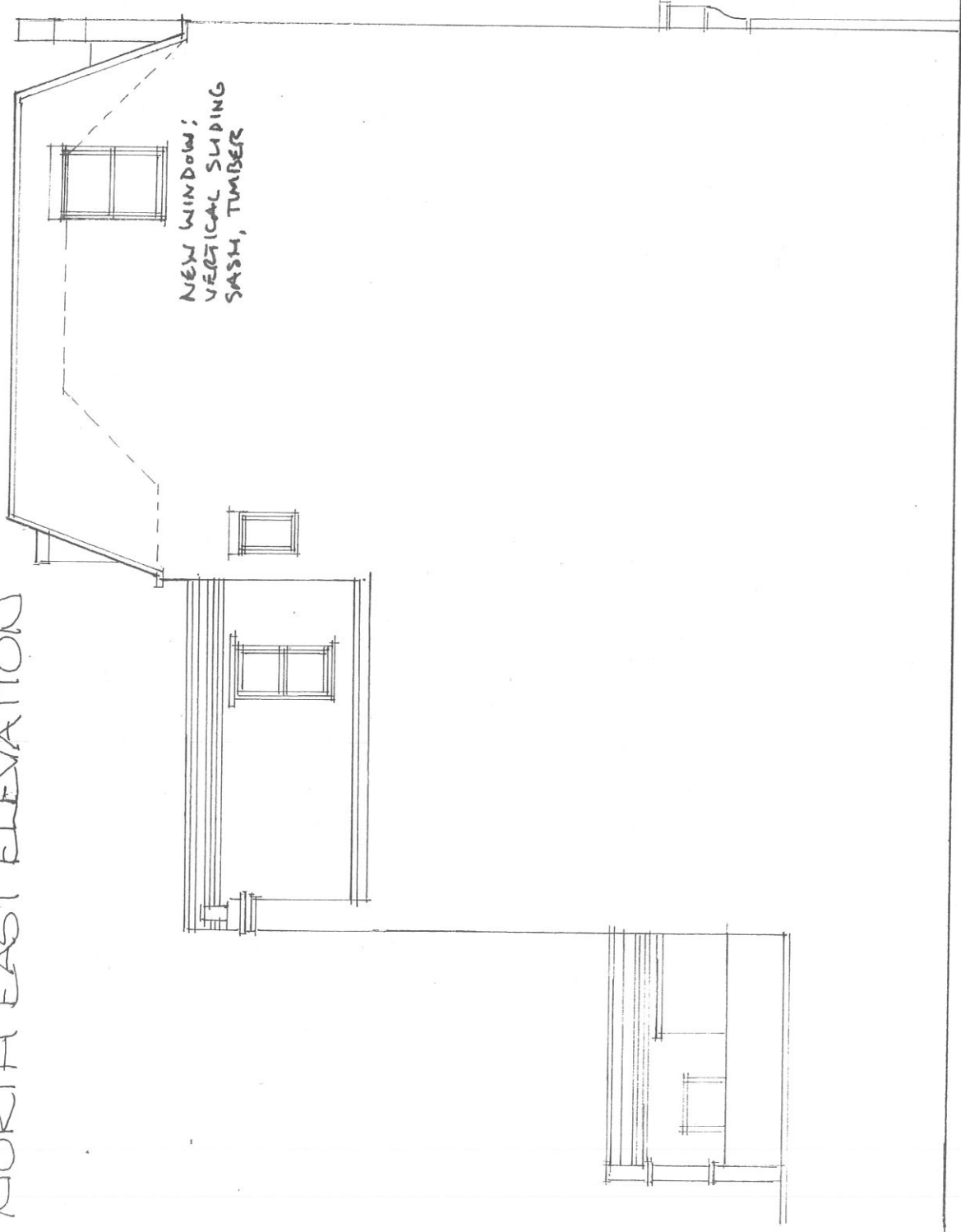


NEW WINDOW:
VERTICAL SASH
PAINTED TIMBER

NEW WINDOW
PAINTED TIMBER



NORTH EAST ELEVATION



NORTH WEST ELEVATION

REDMOND IVIE ARCHITECTS
THE BARLEY MOW CENTRE
10 BARLEY MOW PASSAGE
LONDON W4 4PH
tel 020 8742 1775 / 020 8996 1686
e-mail info@redmondive.com
www.redmondive.com

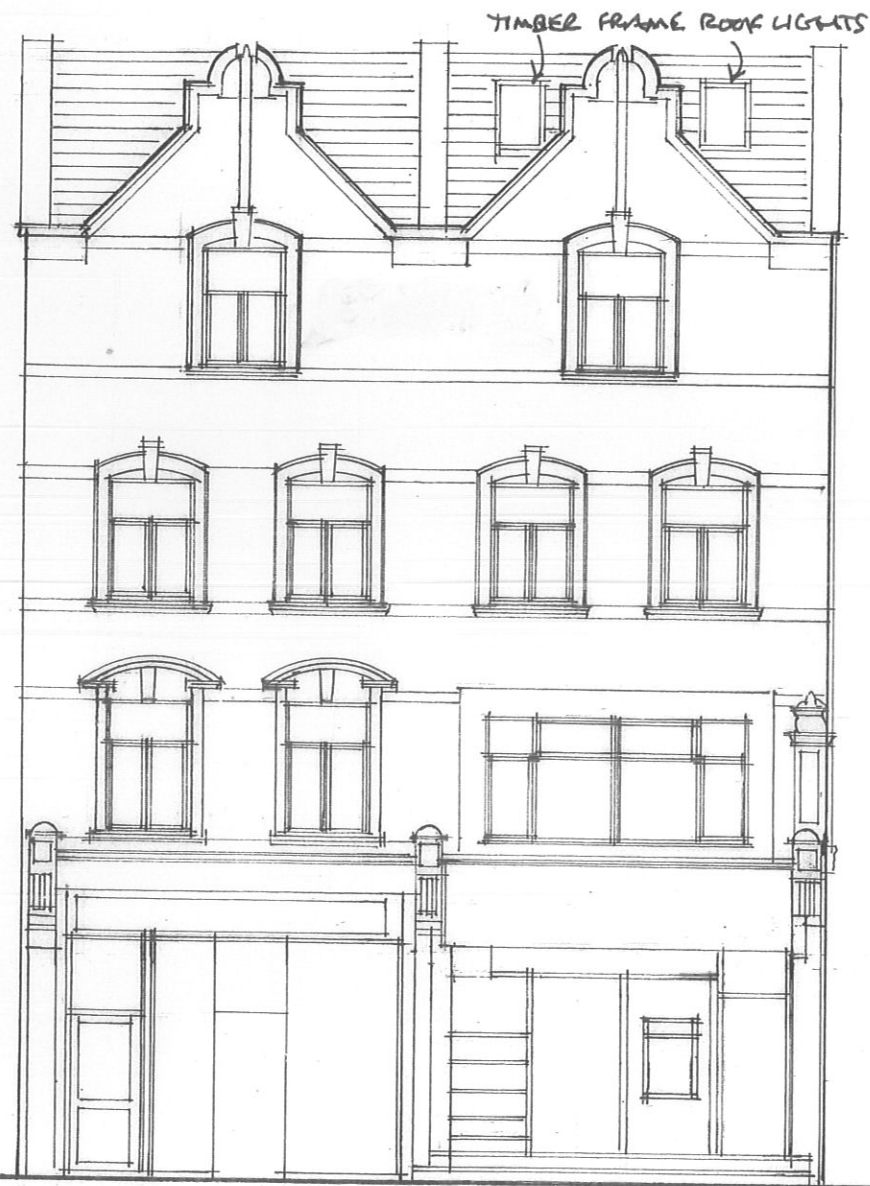
EXTENSIONS TO TOP FLATS
250-252 KILBURN
HIGH ROAD N.W.6 2BS
PROPOSED NE AND NW
ELEVATIONS

B	TIMBER WINDOWS	JULY 2018
A	DORMERS REDUCED	MAY 2018
(REVISIONS)		

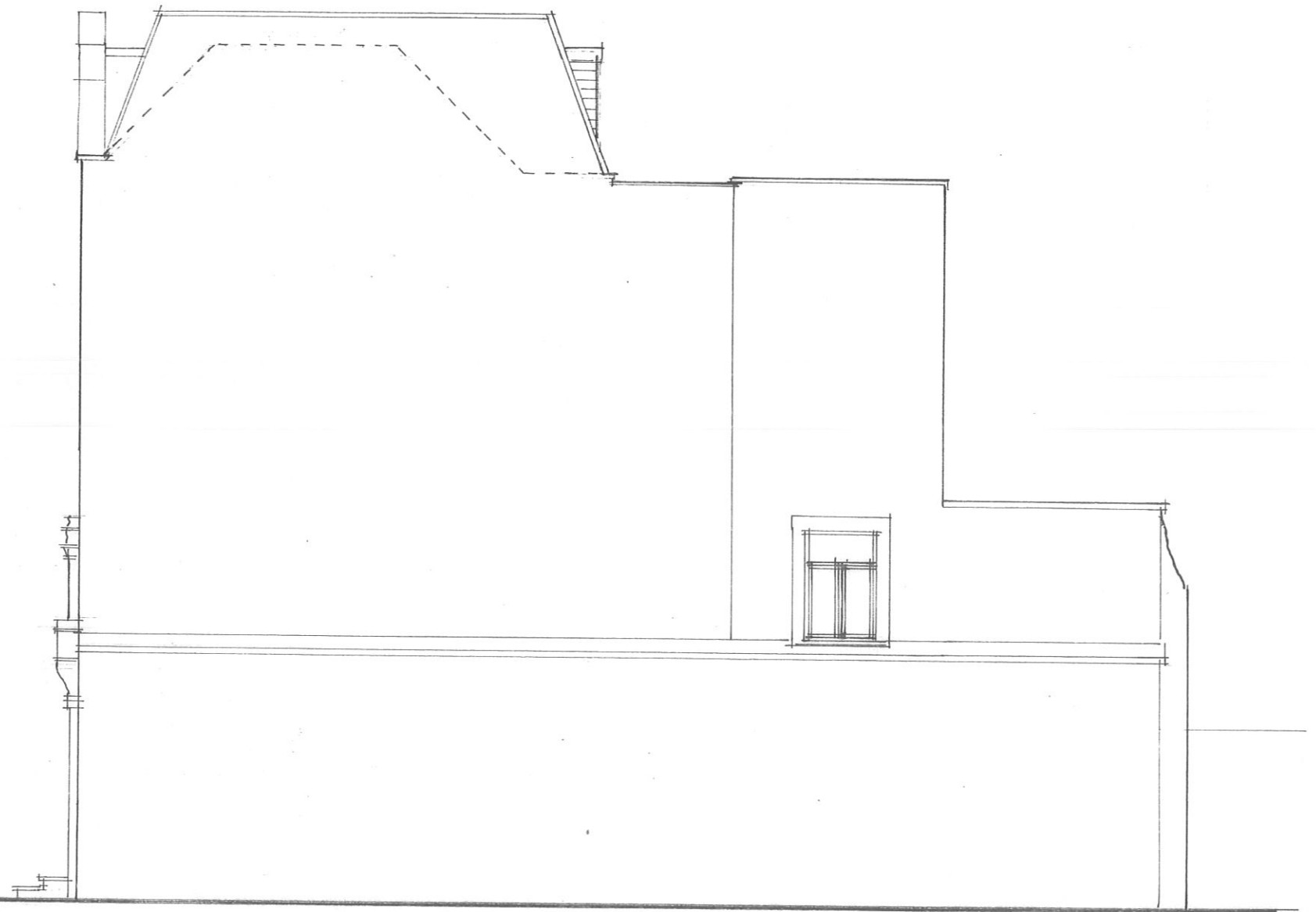
SCALE (M)
1 2 3 4 5 CM.

SCALE: 1:100 @ A3
DATE: APRIL 2018
DRAWN: PSR/RP
1019/04
B

DO NOT SCALE FOR CONSTRUCTION



SOUTH WEST ELEVATION



SOUTH EAST ELEVATION

REDMOND IVIE ARCHITECTS

THE BARLEY MOW CENTRE
 10 BARLEY MOW PASSAGE
 LONDON W4 4PH
 tel 020 8742 1775 / 020 8996 1686
 e-mail info@redmondvie.com
 www.redmondvie.com

EXTENSIONS TO TOP FLATS
 250 AND 252 KILBURN
 HIGH ROAD NW6 2BS

PROPOSED SE AND SW
 ELEVATIONS

C	TIMBER WINDOWS OMITTED ^{AUG} 2018
B	TIMBER WINDOWS JULY 2018
A	DOORWAY REDUCED MAY 2018
REVISIONS	

0 1 2 3 4 5 6M
 SCALE (M)

SCALE: 1:100 @ A3
 DATE: JULY 2017
 DRAWN: RCP

09/08
 C

DO NOT SCALE FOR CONSTRUCTION
 VERIFY ALL DIMENSIONS ON SITE