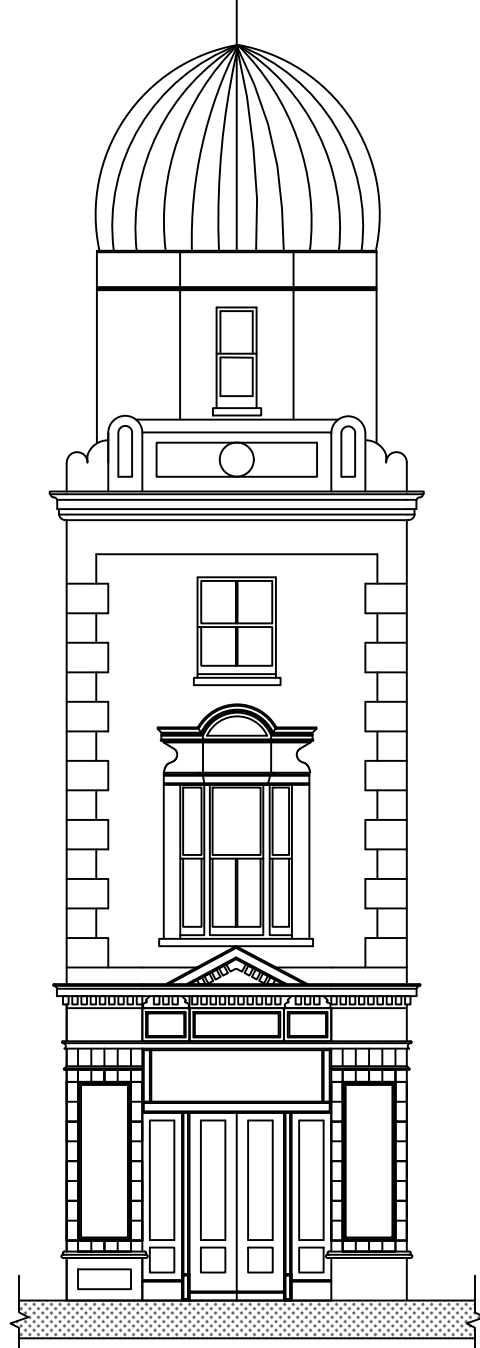
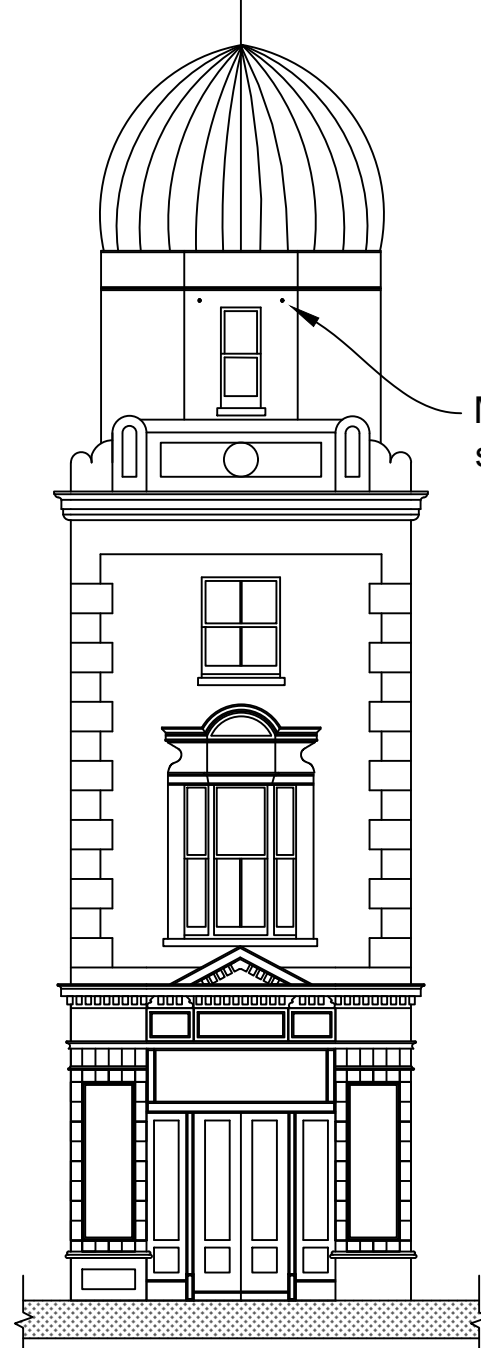


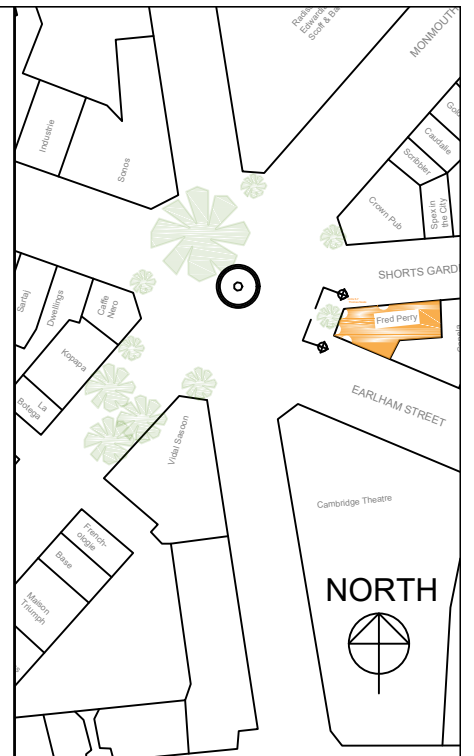
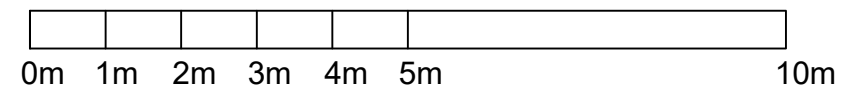
EXISTING ELEVATION
1:100 @ A3



PROPOSED ELEVATION
1:100 @ A3



M12 eyebolt stainless
steel fixing



Project Name: Seven Dials Fixing

Units 6/7 Thomas Neals

SEVE2018_PE02_Drawings for LBC.dwg

Laurie Earle

23.07.18

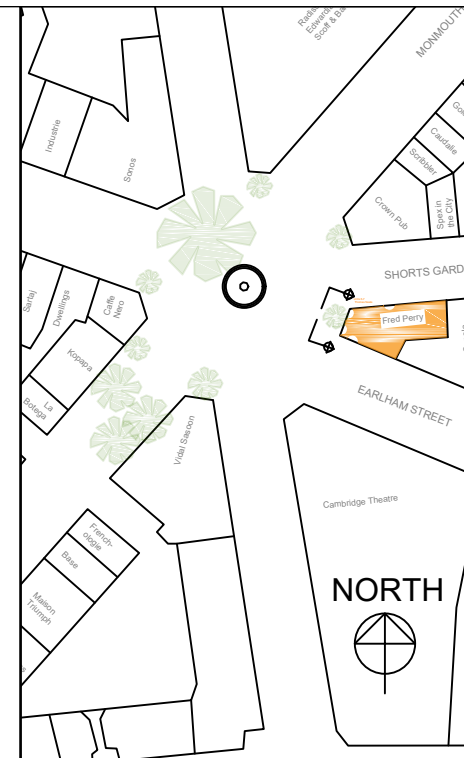
Scale: 1:100 @ A3

Revision: 02

Sheet Number: 1 of 10

For the Attention of: Planning

James Glancy Design LTD
16 - 28 Penarth Street
London SE15 1TX
0207 252 8844



Project Name: Seven Dials Fixing

Units 6/7 Thomas Neals Photo Reference

SEVE2018_PE02_Drawings for LBC.dwg

Laurie Earle

Date: 23.07.18

Scale: NTS

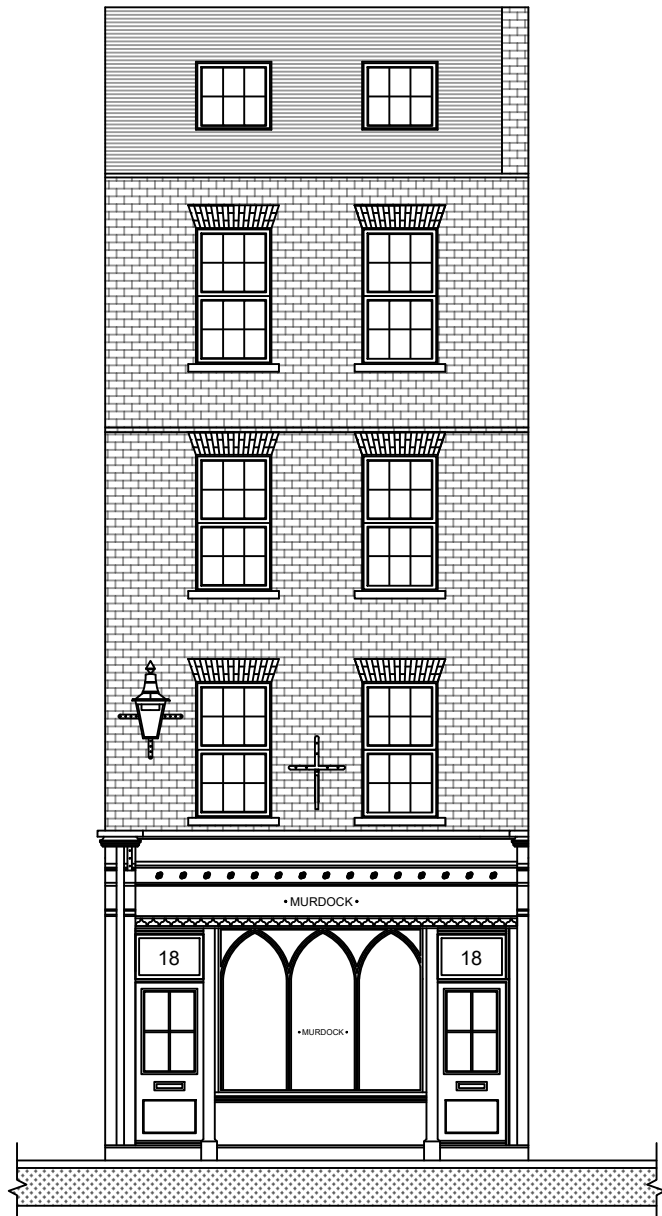
Revision: 02

Sheet Number: 2 of 10

For the Attention of: Planning

James Glancy Design LTD
 16 - 28 Penarth Street
 London SE15 1TX
 0207 252 8844

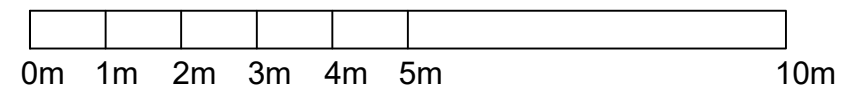
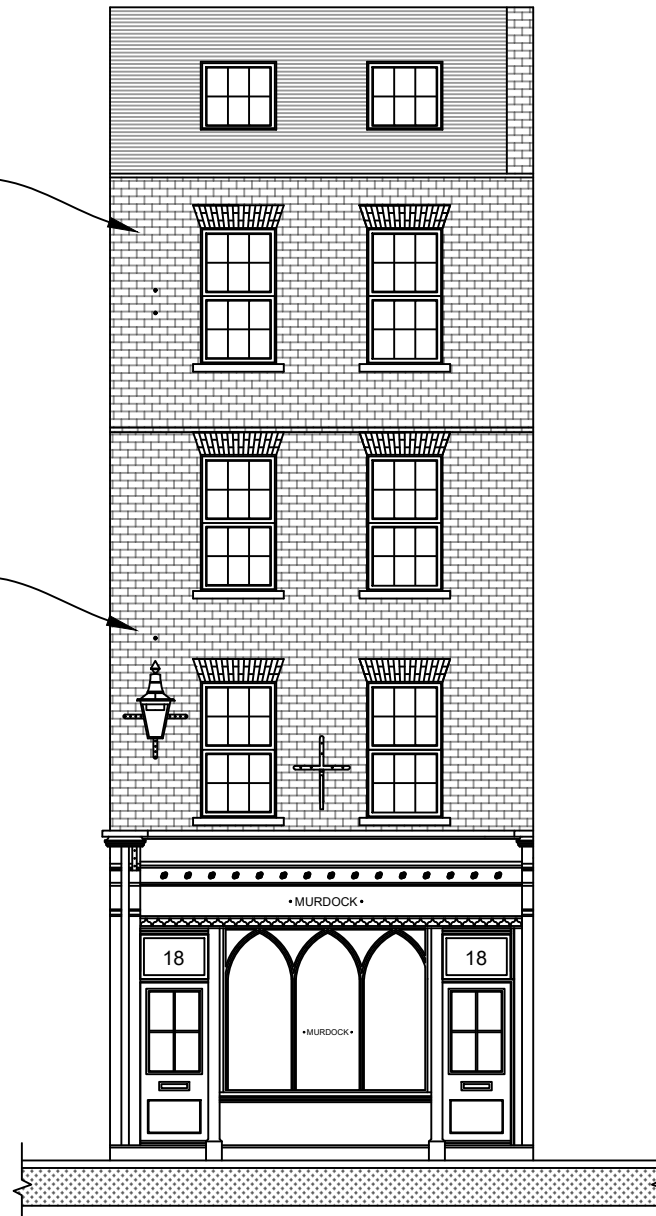
EXISTING ELEVATION
1:100 @ A3



PROPOSED ELEVATION
1:100 @ A3

M12 eyebolt
stainless
steel fixings

M12 eyebolt
stainless
steel fixing



Project Name: Seven Dials Fixing

18 Monouth Street

SEVE2018_PE02_Drawings for LBC.dwg

Laurie Earle

Date: 23.07.18

Scale: 1:100 @ A3

Revision: 02

Sheet Number: 3 of 10

For the Attention of: Planning

James Glancy Design LTD
16 - 28 Penarth Street
London SE15 1TX
0207 252 8844

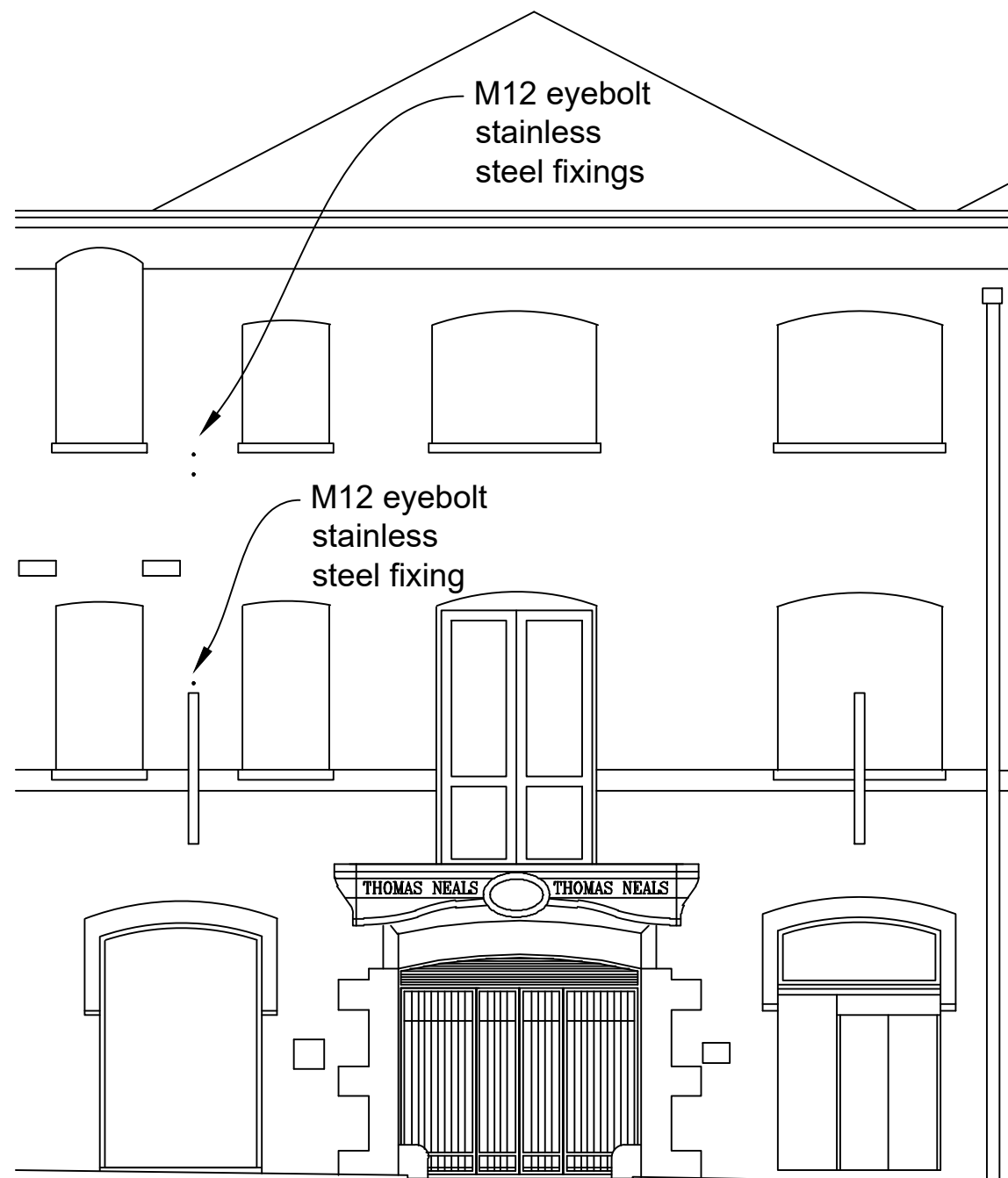


Project Name: Seven Dials Fixing
18 Monouth Street Photo Reference
SEVE2018_PE02_Drawings for LBC.dwg
Laurie Earle
Date: 23.07.18
Scale: NTS
Revision: 02
Sheet Number: 4 of 10
For the Attention of: Planning
James Glancy Design LTD 16 - 28 Penarth Street London SE15 1TX 0207 252 8844

EXISTING ELEVATION
1:100 @ A3

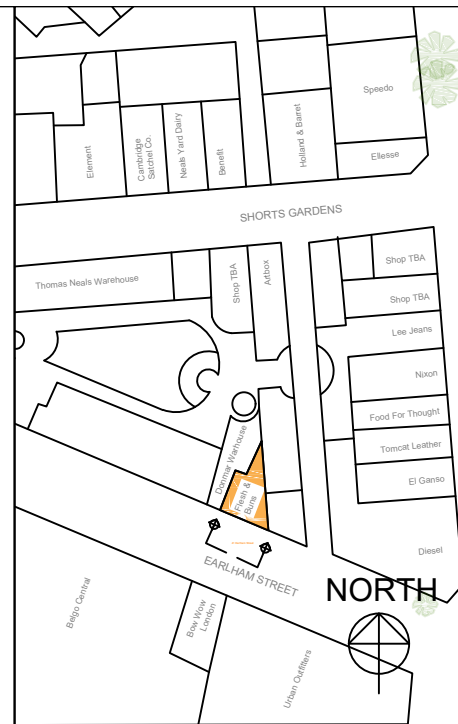
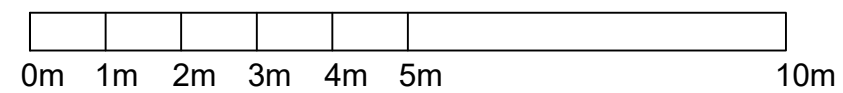


PROPOSED ELEVATION
1:100 @ A3



M12 eyebolt
stainless
steel fixings

M12 eyebolt
stainless
steel fixing



Project Name: Seven Dials Fixing

41 Earham Street

SEVE2018_PE02_Drawings for LBC.dwg

Laurie Earle

Date: 23.07.18

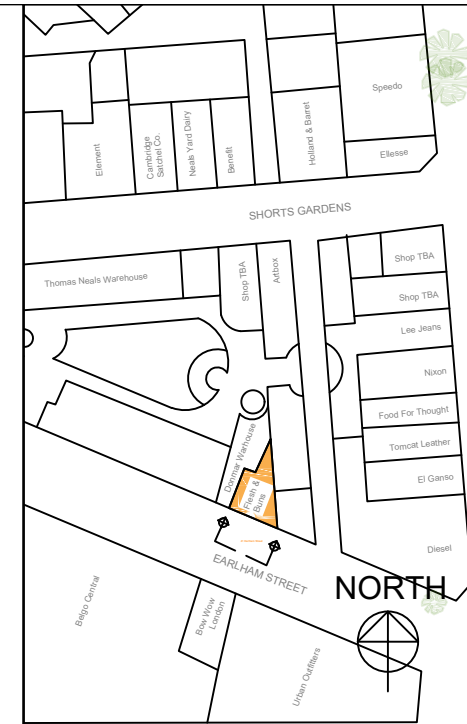
Scale: 1:100 @ A3

Revision: 02

Sheet Number: 5 of 10

For the Attention of: Planning

James Glancy Design LTD
16 - 28 Penarth Street
London SE15 1TX
0207 252 8844



Project Name: Seven Dials Fixing

41 Earlham Street Photo Reference

SEVE2018_PE02_Drawings for LBC.dwg

Laurie Earle

Date: 23.07.18

Scale: NTS

Revision: 02

Sheet Number: 6 of 10

For the Attention of: Planning

James Glancy Design LTD
 16 - 28 Penarth Street
 London SE15 1TX
 0207 252 8844

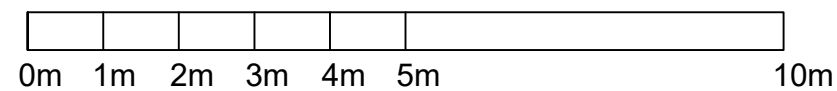
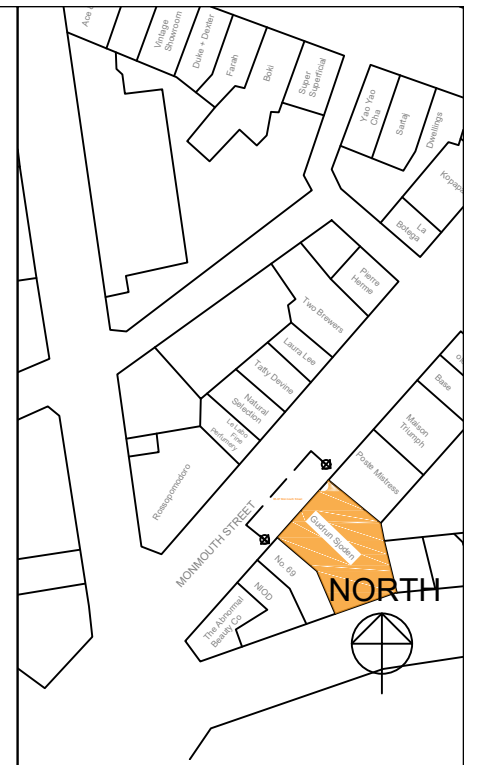
EXISTING ELEVATION
1:100 @ A3



PROPOSED ELEVATION
1:100 @ A3

M12 eyebolt
stainless
steel fixing

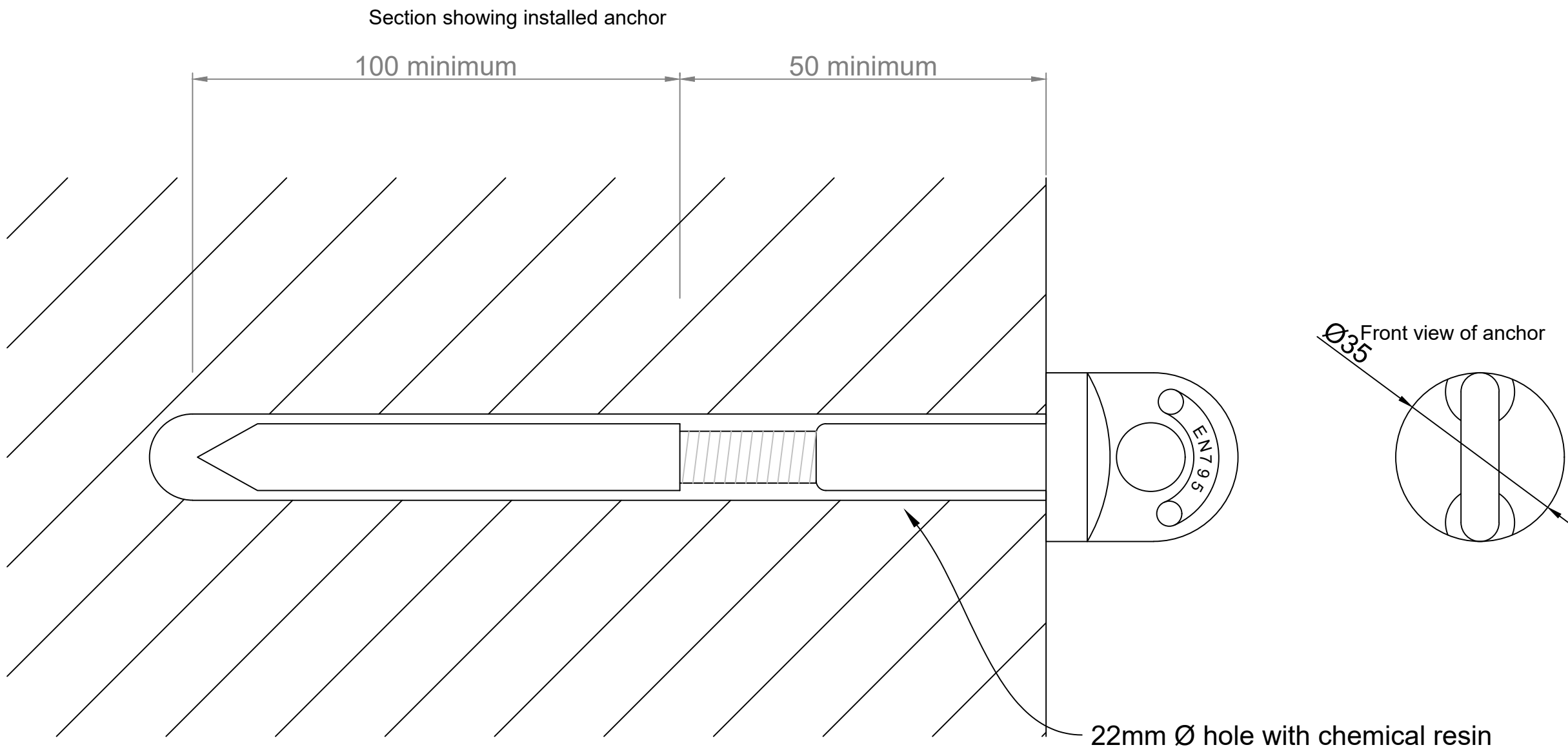
M12 eyebolt
stainless
steel fixing



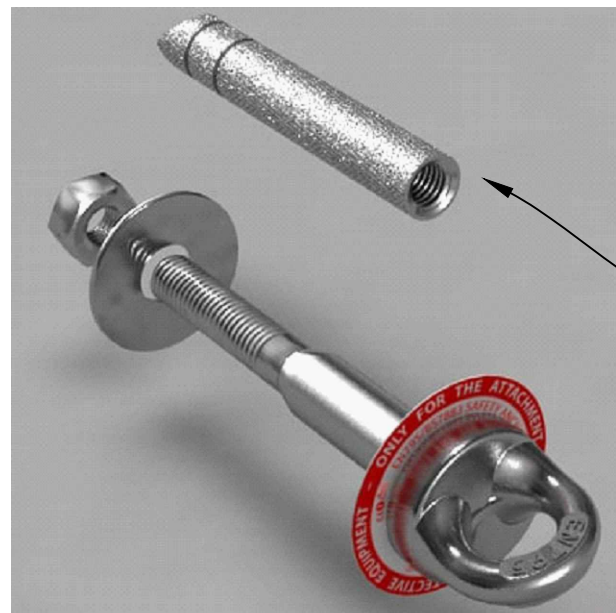
Project Name: Seven Dials Fixing
65-67 Monmouth Street
SEVE2018_PE02_Drawings for LBC.dwg
Laurie Earle
Date: 23.07.18
Scale: 1:100 @ A3
Revision: 02
Sheet Number: 7 of 10
For the Attention of: Planning
James Glancy Design LTD 16 - 28 Penarth Street London SE15 1TX 0207 252 8844



Project Name: Seven Dials Fixing
65-67 Monmouth Street Photo Reference
SEVE2018_PE02_Drawings for LBC.dwg
Laurie Earle
Date: 23.07.18
Scale: NTS
Revision: 02
Sheet Number: 8 of 10
For the Attention of: Planning
James Glancy Design LTD 16 - 28 Penarth Street London SE15 1TX 0207 252 8844



Close up anchor details
 all measurements in mm
 Anchor Specification:
 M12 Threaded shank and
 eyebolt in stainless steel.
 Designed for Class A1
 EN795 anchorage devices
 for use on brick, stone and
 concrete.



stainless steel threaded insert

stainless steel anchor

Project Name: Seven Dials Fixing
Anchor Detail
SEVE2018_PE02_Drawings for LBC.dwg
Laurie Earle
23.07.18
Scale: 1:1 @ A3
Revision: 02
Sheet Number: 9 of 10
For the Attention of: Planning
James Glancy Design LTD 16 - 28 Penarth Street London SE15 1TX 0207 252 8844

Materials for installation

100mm gnurled stainless steel insert and 95mm Stainless steel M12 eyebolt
Fischer Resin FIS V 360s

Equipment for Installation

SDS Drill with 20mm Ø masonry bit and 170mm working length
Blowout Pump
Round brush for hole cleaning
Resin application gun

Method Statement:

PRIOR TO INSTALLATION ALWAYS REFER TO THE PROVIDED PLAN SHOWING REQUIRED LOCATION OF EYEBOLTS

1. Drill 20mm diameter hole to depth of 165mm to shoulder of drill tip. (18mm may be used, 20mm hole gives a stronger fix and avoids eyebolt fouling hole sides during insertion).
2. Clean hole VERY thoroughly by BRUSHING and BLOWING.
3. Apply packing tape to shank of slave eyebolt to prevent excess resin bonding to it - run tape over 1st two threads. Assemble socket to slave eyebolt - do not tighten.
4. Fit nozzle to resin cartridge and cartridge into applicator gun.
5. Pump some resin to waste until resin is an even colour (approx. 2 trigger pulls)
6. Pump resin to base of hole withdrawing the nozzle as you fill to a t least 1/3 full. If there is clearly a void between masonry leaves ensure plenty of resin is injected.
7. Insert eyebolt/socket by hand with twisting motion until the eyebolt meets the surface.
8. Allow initial gel time ("setting time" on Fischer cartridges) before removing the slave eyebolt (approx. 5 - 10 minutes depending on temperature and resin used). Wipe away excess resin from slave eyebolt shank.
9. Allow at least full curing time - as resin manufacturer's instructions depending on temperature.
10. Enter date for next inspection on any labelling. Insert eyebolt and attach labelling. Tighten the eyebolt so it cannot be undone easily by hand.
11. Test eyebolt to a proof load as specified in the job book.

M12 Stainless Steel
Installation method

Project Name: Seven Dials Fixing

Anchor Installation

SEVE2018_PE02_Drawings for LBC.dwg

Laurie Earle

23.07.18

Scale: NTS

Revision: 02

Sheet Number: 10 of 10

For the Attention of: Planning

James Glancy Design LTD
16 - 28 Penarth Street
London SE15 1TX
0207 252 8844