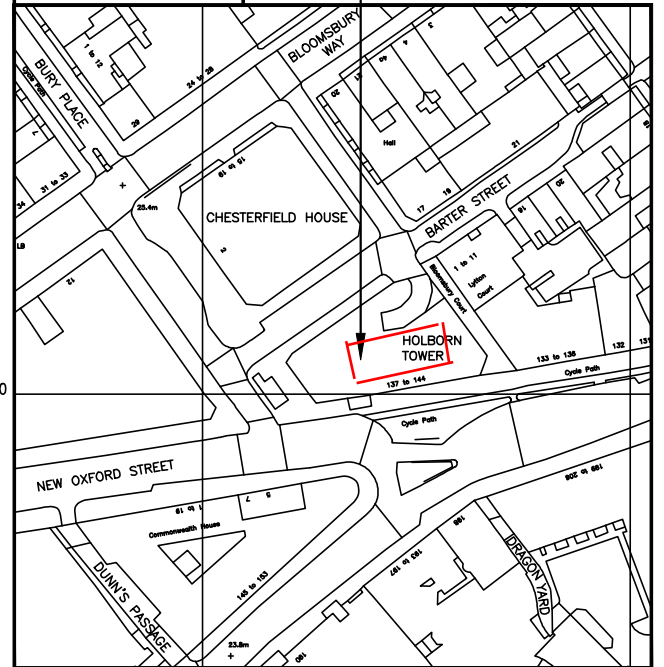
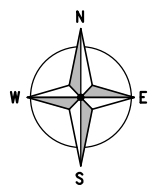


**SITE LOCATION**  
(Scale 1:50000)  
Ordnance Survey map extract based upon Landranger map series with the permission of the controller of Her Majesty's Stationary Office Licence No. 0100023487 Crown copyright.



**SITE PHOTOGRAPH**



**DETAILED SITE LOCATION**  
(Scale 1:1250)  
Based upon Ordnance Survey map extract with the permission of the Controller of Her Majesty's Stationary Office. Crown copyright. Licence No. 100020449

ALL DIMENSIONS ARE IN mm UNLESS NOTED OTHERWISE

N.G.R	E: 530337	N: 181508
CONCESSION REQUIRED	NO	

DIRECTIONS TO SITE:  
LEAVE THE M40 AT JUNCTION 1 AND CONTINUE ONTO WESTERN AVENUE/A40. KEEP RIGHT TO STAY ON WESTERN AVENUE/A40. KEEP RIGHT AND CONTINUE ONTO WESTWAY/A40. CONTINUE ONTO MARYLEBONE ROAD/A501. TAKE THE A400 EXIT TOWARDS WEST END/WESTMINSTER/HOLBORN. TURN RIGHT ONTO TOTTENHAM COURT ROAD/A40. TURN LEFT ONTO A400. TURN LEFT ONTO NEW OXFORD STREET/A40. TURN RIGHT ONTO BARTER STREET. HOLBORN TOWER IS ON THE LEFT HAND SIDE.

NOTES:

A	Issued for Approval	KJS	PM	26.03.18
REV	MODIFICATION	BY	CH	DATE

**mono #**

MONO CONSULTANTS LIMITED  
No. 58 Cygnet Court  
Timothy's Bridge Road  
Stratford-upon-Avon  
Warwickshire  
CV37 9NW  
t. 44 (0)1789 206500  
f. 44 (0)1789 206529  
www.monoconsultants.com

**O<sub>2</sub>**

CTIL - LONDON

Cell Name		Opt.
HOLBORN TOWER		-
Cell ID No		
CTIL	TEF	VF
20625923	044383	001542

Site Address / Contact Details

137-144 HIGH HOLBORN  
BLOOMSBURY  
LONDON  
WC1A 2BA

Drawing Title: **SITE LOCATION MAPS**

Purpose of Issue:	<b>PLANNING</b>	Dwg Rev.
Drawing Number:	100	A
Surveyed By:	Original Sheet Size:	Pack Issue:
NC	A3	
Drawn:	Date:	Checked:
KJS	26.03.18	PM
Date:	26.03.18	A

The drawings comply with TEF & Vodafone **Standard ICNIRP** guidelines.  
Designed in accordance with CTIL document: SDN0008



EXISTING 1No. TEF ANTENNA ON BRACED  
3.0m LONG 114.3Ø SUPPORT POLE

EXISTING ROOF ACCESS DOOR

EXISTING TEF 300 WIDE ROOF  
MOUNTED COVERED CABLE TRAY

EXISTING 150 WIDE ROOF  
MOUNTED COVERED CABLE TRAY

EXISTING VF EQUIPMENT  
CABIN ON STEEL GRILLAGE

EXISTING 1No. OLO ANTENNAS

EXISTING OLO EQUIPMENT  
CABIN ON GRILLAGE

EXISTING 2No. VF RRU'S  
FIXED TO HANDRAIL

EXISTING 2No. OLO ANTENNAS

EXISTING 2No. VF  
ANTENNA ON CHS POLES

EXISTING CHIMNEY/VENT

EXISTING 2No. TEF ANTENNAS  
ON BRACED 3.0m LONG  
114.3Ø SUPPORT POLES

EXISTING 2No. VF  
ANTENNA ON CHS POLES

EXISTING 2No. VF RRU'S  
FIXED TO HANDRAIL

EXISTING 1No. OLO ANTENNA

EXISTING 1No. TEF ANTENNA ON BRACED  
3.0m LONG 114.3Ø SUPPORT POLE

EXISTING OLO EQUIPMENT  
CABIN ON STEEL GRILLAGE

EXISTING 1No. OLO ANTENNA  
1.1m HIGH FREESTANDING  
HANDRAIL

EXISTING 2No. TEF ANTENNAS  
ON BRACED 3.0m LONG  
114.3Ø SUPPORT POLES

EXISTING 1No. OLO DISH

EXISTING 2No. VF RRU'S  
FIXED TO HANDRAIL

EXISTING 2No. VF  
ANTENNA ON CHS POLES

EXISTING 2No. OLO ANTENNAS

EXISTING 1No. OLO ANTENNAS

EXISTING 1No. OLO DISH

EXISTING OLO CABINETS  
ON STEEL GRILLAGE

EXISTING OLO DISH

EXISTING AERIAL

EXISTING VENTS (TYP.)

EXISTING ROOF LIGHT

EXISTING FREESTANDING  
HANDRAIL

MAIN ROOF LEVEL  
+45.60m

EXISTING SITE PLAN  
(1:100)

ALL DIMENSIONS ARE IN mm UNLESS NOTED OTHERWISE

N.G.R E: 530337 N: 181508

CONCESSION REQUIRED NO

NOTES:

A	Issued for Approval	KJS	PM	26.03.18
REV	MODIFICATION	BY	CH	DATE

**mono** #

MONO CONSULTANTS LIMITED  
No. 58 Cygnet Court  
Timothy's Bridge Road  
Stratford-upon-Avon  
Warwickshire  
CV37 9NW  
t. 44 (0)1789 206500  
f. 44 (0)1789 206529  
www.monoconsultants.com

**O<sub>2</sub>**

CTIL - LONDON

Cell Name Opt.

HOLBORN TOWER -

Cell ID No

CTIL TEF VF

20625923 044383 001542

Site Address / Contact Details

137-144 HIGH HOLBORN  
BLOOMSBURY  
LONDON  
WC1A 2BA

Drawing Title: EXISTING SITE PLAN

Purpose of issue: PLANNING Dwg Rev

Drawing Number: 200 A

Surveyed By: NC Original Sheet Size: A3 Pack Issue:

Drawn: KJS Date: 26.03.18 Checked: PM Date: 26.03.18 A



PROPOSED 1No. TEF ANTENNA ON  
EXISTING BRACED 114.3Ø SUPPORT POLE

EXISTING ROOF ACCESS DOOR

PROPOSED 2No. TEF ANTENNAS ON NEW WALL-  
MOUNTED SUPPORT POLES & PROPOSED 1No.  
TEF 300Ø DISH ON OFFSET BRACKET

PROPOSED 5No. TEF RRU'S  
FIXED TO SIDE OF CABIN

EXISTING TEF 300 WIDE ROOF  
MOUNTED COVERED CABLE TRAY

EXISTING 150 WIDE ROOF  
MOUNTED COVERED CABLE TRAY

EXISTING VF EQUIPMENT CABIN ON STEEL  
GRILLAGE. FOR PROPOSED TEF EQUIPMENT  
LAYOUT REFER TO DWG 401

EXISTING 1No. OLO ANTENNAS

EXISTING OLO EQUIPMENT  
CABIN ON GRILLAGE

EXISTING 2No. VF RRU'S  
FIXED TO HANDRAIL

EXISTING 2No. OLO ANTENNAS

PROPOSED 5No. TEF RRU'S  
ON MAFI MEDIUM FREESTANDER

EXISTING 2No. VF  
ANTENNA ON CHS POLES

PROPOSED 1No. TEF ANTENNA ON  
NEW BRACED SUPPORT POLE

EXISTING 2No. TEF ANTENNAS ON  
BRACED 3.0m LONG 114.3Ø SUPPORT  
POLES TO BE REMOVED & REPLACED  
WITH PROPOSED 2No. TEF ANTENNAS

EXISTING 2No. VF  
ANTENNA ON CHS POLES

EXISTING 2No. VF RRU'S  
FIXED TO HANDRAIL

EXISTING CHIMNEY/VENT

EXISTING 1No. OLO ANTENNA

PROPOSED 5No. TEF RRU'S  
ON MAFI MEDIUM FREESTANDER

EXISTING 1No. TEF ANTENNA ON BRACED 3.0m LONG 114.3Ø SUPPORT  
POLE TO BE REMOVED & REPLACED WITH PROPOSED 1No. TEF ANTENNA  
& PROPOSED 1No. TEF 600Ø DISH ON OFFSET BRACKET. 1No. TEF GPS  
MODULE TO BE INSTALLED 200mm ABOVE & BEHIND ANTENNA

PROPOSED 2No. TEF ANTENNAS ON NEW  
BRACED SUPPORT POLE & OFFSET BRACKET

EXISTING OLO EQUIPMENT  
CABIN ON STEEL GRILLAGE

EXISTING 1No. OLO ANTENNA

1.1m HIGH FREESTANDING  
HANDRAIL

EXISTING 2No. TEF ANTENNAS  
ON BRACED 3.0m LONG  
114.3Ø SUPPORT POLES TO  
BE REMOVED

EXISTING 1No. OLO DISH

EXISTING 2No. VF RRU'S  
FIXED TO HANDRAIL

EXISTING 2No. VF  
ANTENNA ON CHS POLES

EXISTING 2No. OLO ANTENNAS

EXISTING 1No. OLO ANTENNAS

EXISTING 1No. OLO DISH

EXISTING OLO CABINETS  
ON STEEL GRILLAGE

EXISTING OLO DISH

EXISTING AERIAL

EXISTING VENTS (TYP.)

EXISTING ROOF LIGHT

EXISTING FREESTANDING  
HANDRAIL

MAIN ROOF LEVEL  
+45.60m

### PROPOSED SITE PLAN

(1:100)

ALL DIMENSIONS ARE IN mm UNLESS NOTED OTHERWISE

N.G.R E: 530337 N: 181508

CONCESSION REQUIRED NO

NOTES:

A	Issued for Approval	KJS	PM	26.03.18
REV	MODIFICATION	BY	CH	DATE

**mono** #

MONO CONSULTANTS LIMITED  
No. 58 Cygnet Court  
Timothy's Bridge Road  
Stratford-upon-Avon  
Warwickshire  
CV37 9NW  
t. 44 (0)1789 206500  
f. 44 (0)1789 206529  
www.monoconsultants.com

**O<sub>2</sub>**

CTIL - LONDON

Cell Name Opt.

HOLBORN TOWER -

Cell ID No

CTIL TEF VF

20625923 044383 001542

Site Address / Contact Details

137-144 HIGH HOLBORN  
BLOOMSBURY  
LONDON  
WC1A 2BA

Drawing Title: PROPOSED SITE PLAN

Purpose of issue: PLANNING Dwg Rev

Drawing Number: 201 A

Surveyed By: NC Original Sheet Size: A3 Pack Issue

Drawn: KJS Date: 26.03.18 Checked: PM Date: 26.03.18 A

The drawings comply with TEF & Vodafone Standard ICNIRP guidelines.  
Designed in accordance with CTIL document: SDN0008

EXISTING OLO EQUIPMENT CABIN ON GRILLAGE  
 EXISTING 2No. TEF ANTENNAS ON BRACED 3.0m LONG 114.3ø SUPPORT POLES

TOP OF EXISTING TEF ANTENNAS +49.0m AGL  
 U/S OF EXISTING TEF ANTENNAS +47m AGL

EXISTING 2No. VF ANTENNAS ON CHS POLES

EXISTING VF EQUIPMENT CABIN ON GRILLAGE

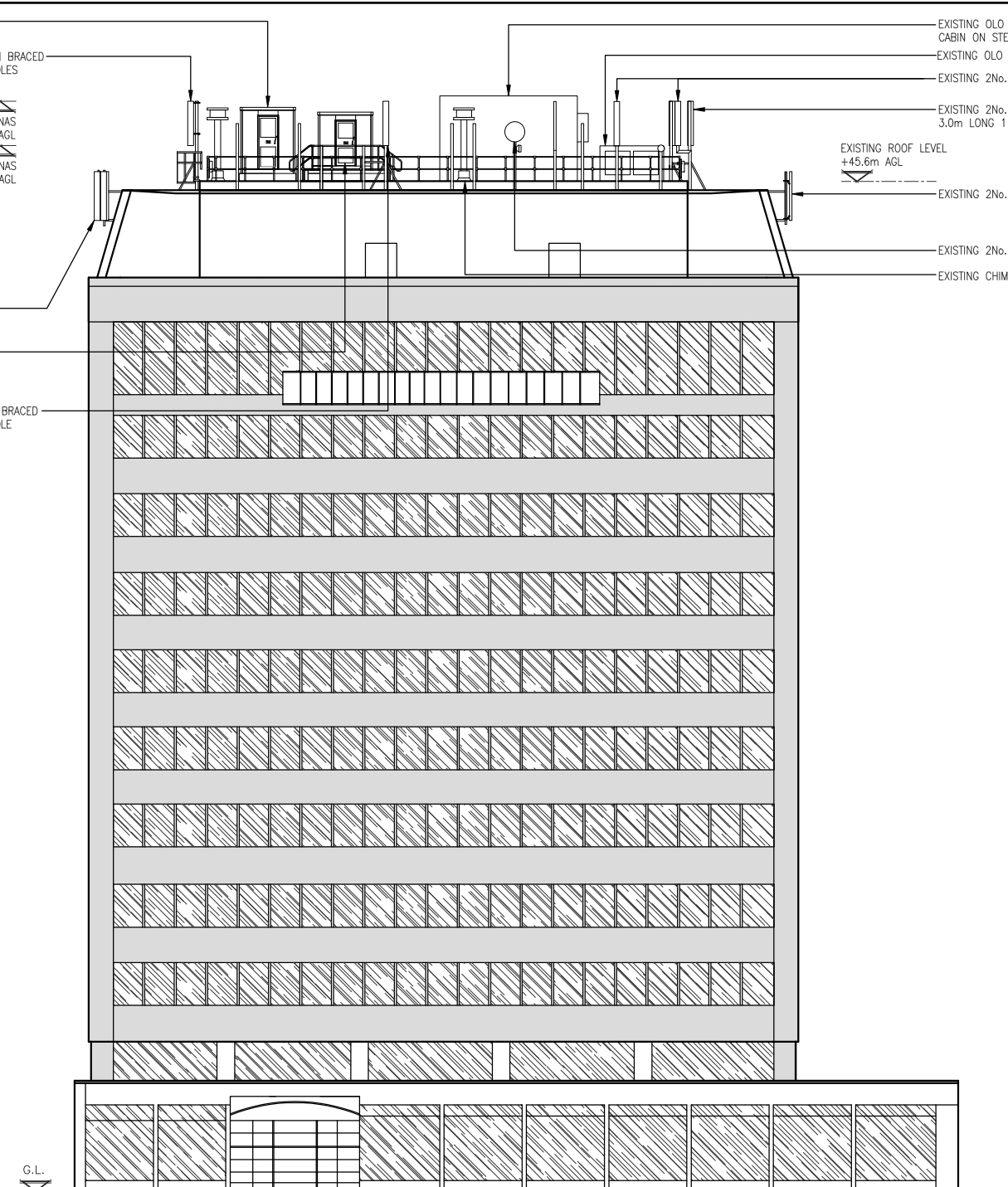
EXISTING 1No. TEF ANTENNA ON BRACED 3.0m LONG 114.3ø SUPPORT POLE

EXISTING OLO EQUIPMENT CABIN ON STEEL GRILLAGE  
 EXISTING OLO CABINETS ON STEEL GRILLAGE  
 EXISTING 2No. OLO ANTENNAS  
 EXISTING 2No. TEF ANTENNAS ON BRACED 3.0m LONG 114.3ø SUPPORT POLES

EXISTING ROOF LEVEL +45.6m AGL

EXISTING 2No. VF ANTENNAS ON CHS POLES

EXISTING 2No. OLO DISHES  
 EXISTING CHIMNEY/VENT



EXISTING SOUTH ELEVATION  
 (1:200)

ALL DIMENSIONS ARE IN mm UNLESS NOTED OTHERWISE

N.G.R E: 530337 N: 181508  
 CONCESSION REQUIRED NO

NOTES:

REV	MODIFICATION	BY	CH	DATE
A	Issued for Approval	KJS	PM	26.03.18

**mono** #

MONO CONSULTANTS LIMITED  
 No. 58 Cygnet Court  
 Timothy's Bridge Road  
 Stratford-upon-Avon  
 Warwickshire  
 CV37 9NW  
 t. 44 (0)1789 206500  
 f. 44 (0)1789 206529  
 www.monoconsultants.com

**O<sub>2</sub>**  
 CTIL - LONDON

Cell Name Opt.  
 HOLBORN TOWER -

Cell ID No

CTIL	TEF	VF
20625923	044383	001542

Site Address / Contact Details  
 137-144 HIGH HOLBORN  
 BLOOMSBURY  
 LONDON  
 WC1A 2BA

Drawing Title:  
 EXISTING SITE ELEVATION

Purpose of Issue: PLANNING Dwg Rev.

Drawing Number: 300 A

Surveyed By: NC Original Sheet Size: A3 Pack Issue:

Drawn:	Date:	Checked:	Date:
KJS	26.03.18	PM	26.03.18

EXISTING OLO EQUIPMENT CABIN ON GRILLAGE

EXISTING 2No. TEF ANTENNAS ON BRACED 3.0m LONG 114.3Ø SUPPORT POLES TO BE REMOVED & REPLACED WITH PROPOSED 2No. TEF ANTENNAS

TOP OF PROPOSED TEF ANTENNAS  
+49.0m AGL

U/S OF PROPOSED TEF ANTENNAS  
+47m AGL

EXISTING 2No. VF ANTENNAS ON CHS POLES

EXISTING VF EQUIPMENT CABIN ON STEEL GRILLAGE. FOR PROPOSED TEF EQUIPMENT LAYOUT REFER TO DWG 401

EXISTING 1No. TEF ANTENNA ON BRACED 3.0m LONG 114.3Ø SUPPORT POLE TO BE REMOVED & REPLACED WITH PROPOSED 1No. TEF ANTENNA & PROPOSED 1No. TEF 600Ø DISH ON OFFSET BRACKET. 1No. TEF GPS MODULE TO BE INSTALLED 200mm ABOVE & BEHIND ANTENNA

PROPOSED 2No. TEF ANTENNAS ON NEW BRACED SUPPORT POLE & OFFSET BRACKET

EXISTING OLO EQUIPMENT CABIN ON STEEL GRILLAGE

EXISTING OLO CABINETS ON STEEL GRILLAGE

EXISTING 2No. OLO ANTENNAS

EXISTING 2No. TEF ANTENNAS ON BRACED 3.0m LONG 114.3Ø SUPPORT POLES TO BE REMOVED

EXISTING ROOF LEVEL  
+45.6m AGL

EXISTING 2No. VF ANTENNAS ON CHS POLES

EXISTING 2No. OLO DISHES

EXISTING CHIMNEY/VENT

ALL DIMENSIONS ARE IN mm UNLESS NOTED OTHERWISE

N.G.R E: 530337 N: 181508

CONCESSION REQUIRED NO

NOTES:

REV	MODIFICATION	BY	CH	DATE
A	Issued for Approval	KJS	PM	26.03.18

**mono** #

MONO CONSULTANTS LIMITED  
No. 58 Cygnet Court  
Timothy's Bridge Road  
Stratford-upon-Avon  
Warwickshire  
CV37 9NW  
t. 44 (0)1789 206500  
f. 44 (0)1789 206529  
www.monoconsultants.com

**O<sub>2</sub>**

CTIL - LONDON

Cell Name Opt.

HOLBORN TOWER -

Cell ID No

CTIL	TEF	VF
20625923	044383	001542

Site Address / Contact Details

137-144 HIGH HOLBORN  
BLOOMSBURY  
LONDON  
WC1A 2BA

Drawing Title: PROPOSED SITE ELEVATION

Purpose of Issue: PLANNING Dwg Rev.

Drawing Number: 301 A

Surveyed By: NC Original Sheet Size: A3 Pack Issue:

Drawn: KJS Date: 26.03.18 Checked: PM Date: 26.03.18 A

G.L.

The drawings comply with TEF & Vodafone Standard ICNIRP guidelines.  
Designed in accordance with CTIL document: SDN0008

PROPOSED SOUTH ELEVATION  
(1:200)