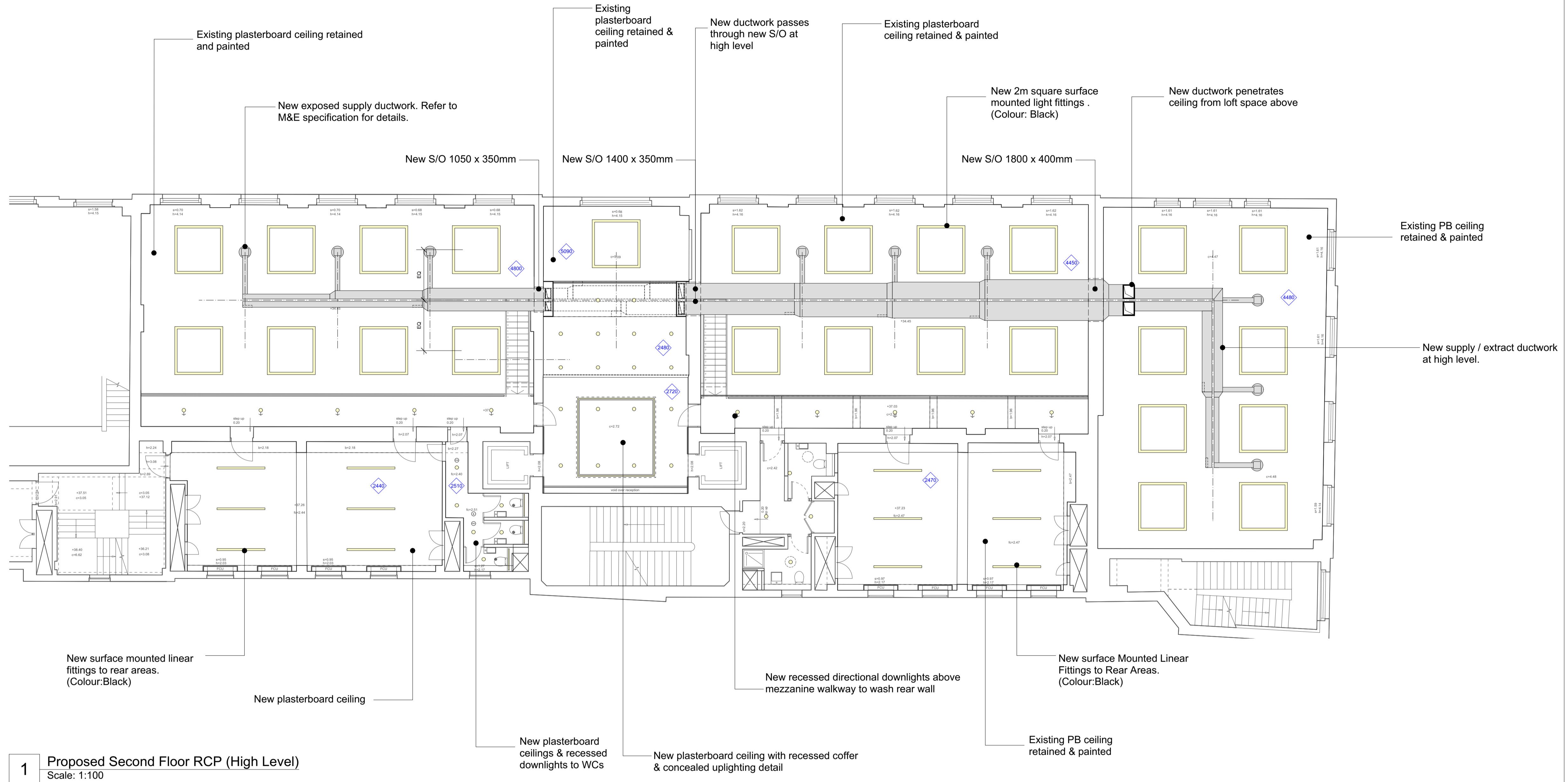


### Lighting Key

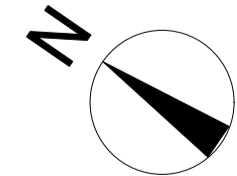
NOTE: Refer to M&E Specification for details

- LF01 Square-linear pendant fittings
- LF02 Recessed downlights (directional)
- LF03 Recessed linear fittings
- LF04 Linear surface mounted fittings
- LF05 LED strips to WC's



**1** Proposed Second Floor RCP (High Level)  
Scale: 1:100

Scale: 1:100@A1



NOTES:-  
 - All dimensions to be checked on site prior to commencement of any works, and/or preparation of any shop drawings.  
 - Sizes of and dimensions to any structural or services elements are indicative only. See structural and service engineers drawings for actual sizes / dimensions.  
 - This drawing to be read in conjunction with all other Architects drawings, specifications and other Consultants' information.  
 - All proprietary systems shown on this drawing are to be installed strictly in accordance with the Manufacturers/Suppliers recommended details.  
 - Any discrepancies between information shown on this drawing and any other contract information or manufacturers/suppliers recommendations is to be brought to the attention of the Architect.

Revision	Date	Amendment
P1	01/06/18	Issued for planning
-	-	-
-	-	-
-	-	-
-	-	-
-	-	-

Date	August 2018	Project	Eversholt St - 2nd Floor 163	Job Ref.	306 RCF
Scale	1:100 @A1	Drawn	CN	Check	DP
Status	Planning	Client Ref	-	Dwg. no.	306(PL)212
Architect	Hale Brown Architects Ltd. Unit 2.01 Chester House, Kennington Park, 1-3 Brixton Rd, London SW9 6DE		T: 020 8977 6946	E: mail@halebrown.com	W: www.halebrown.com

**halebrown**  
architects