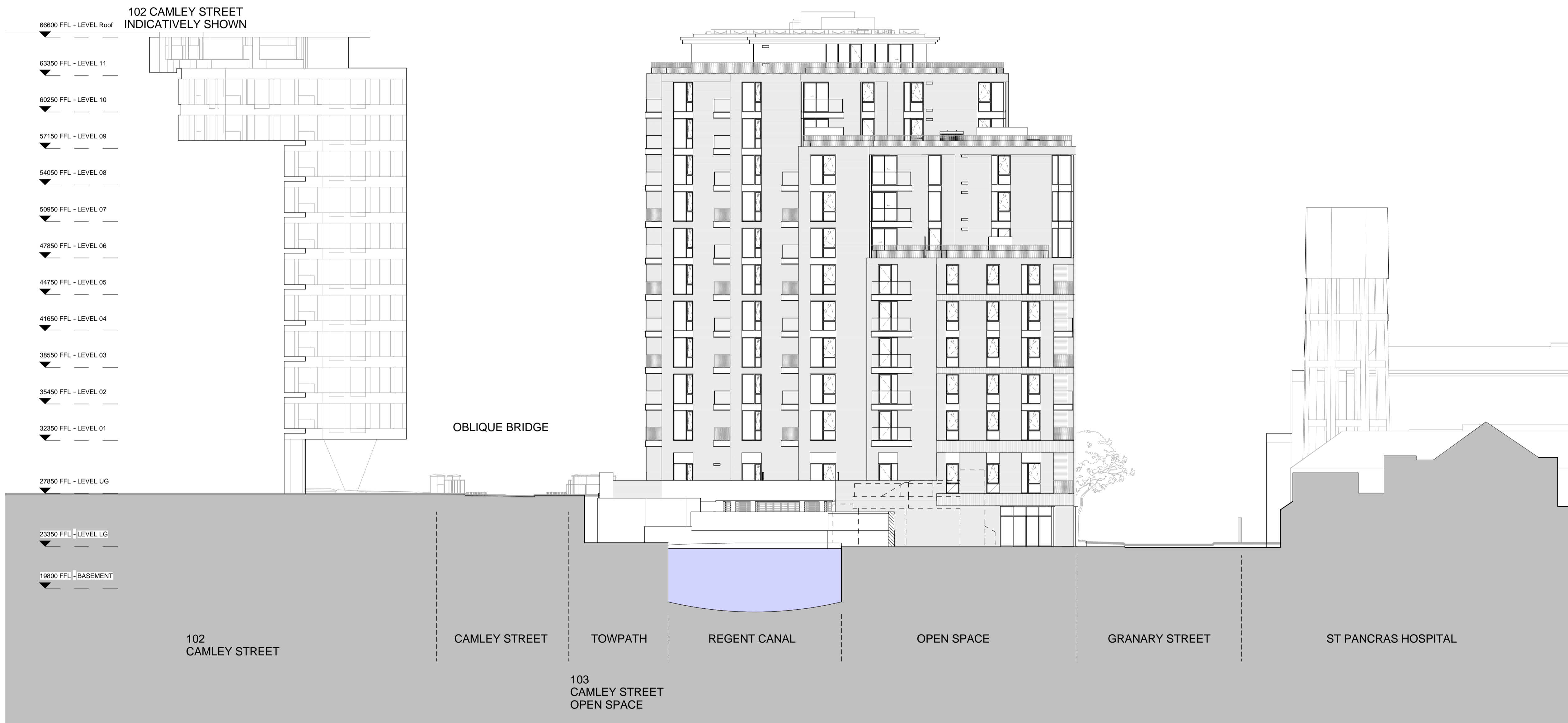
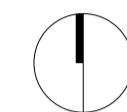


All dimensions are in mm unless otherwise stated  
 All dimensions to be verified on site before proceeding with the work  
 Any discrepancies to be notified in writing to architect immediately  
 All boundaries indicative only and to be confirmed by others



Proposed North West Elevation

REV	DATE	NOTES	TW
-	26.07.18	Issued to London Borough of Camden as part of July Section 73 Application.	INT

**PLANNING**

**HUTCHINSON & PARTNERS**

3.12 The Record Hall, 16-16A Baldwin's Garden, London, EC1N 7RJ  
 t. 020 3176 8192 e. info@hutchinsonandpartners.com w. www.hutchinsonandpartners.com

JOB TITLE  
 Stanley Sidings, 101 Camley Street, Camden

DRAWING TITLE / LOCATION  
 PROPOSED GA NW ELEVATION NORTH  
 BLOCK

DRAWN BY DH	CHECKED GFV	SCALE 1:200 @ A1 / 1:400 @ A3	STATUS PLANNING
PROJECT 16022	DRAWING NO 01 AP 0030 005	REVISION -	

CLIENT  
 Chalk Farm Developments Ltd

**THIS DRAWING REPLACES THE PREVIOUSLY APPROVED PLANNING DRAWING CML-305 (P01)**

