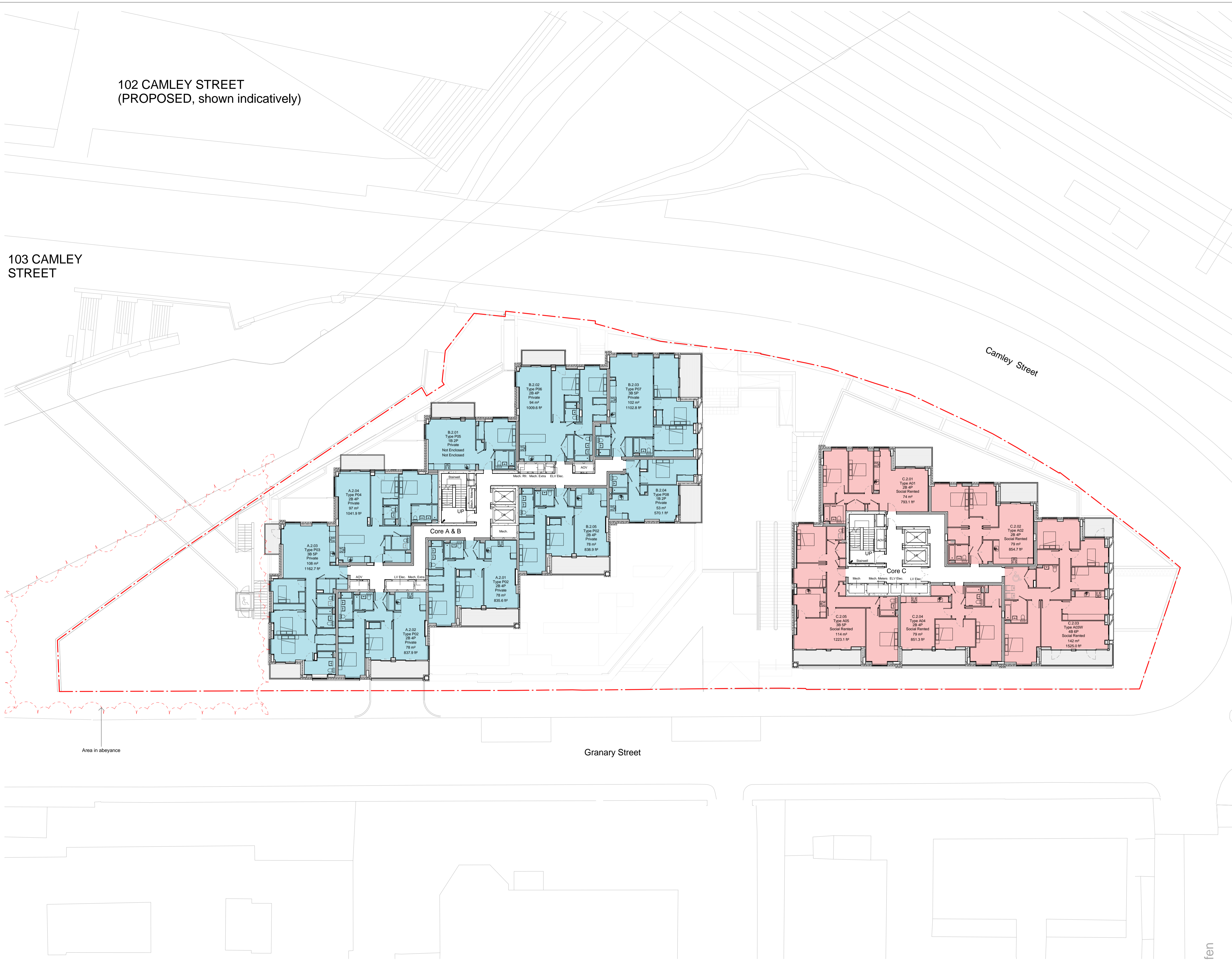


All dimensions are in mm unless otherwise stated
 All dimensions to be verified on site before proceeding with the work
 Any discrepancies to be notified in writing to architect immediately
 All boundaries indicative only and to be confirmed by others

- Key**
- Residential Use**
- Open Market
 - Shared Ownership
 - Intermediate Rent
 - Affordable Rent
- A** Accessible Adaptable Apartments
R Residential Car Parking Spaces
- Refuse
 - Cycle Storage
 - Residential Amenity
- Other Use**
- Employment Use
 - Plant
 - Refuse Storage
 - Cycle Storage
- Access**
- Employment Use Entrance
 - Main Residential Entrance (Private Units)
 - Combined Residential Entrance (Affordable/Private Units)
- Boundary**
- Planning Submission Boundary
- Commercial Notes**
- Internal layouts shown indicatively

102 CAMLEY STREET
 (PROPOSED, shown indicatively)

103 CAMLEY STREET



03	26.07.18	Issued to London Borough of Camden as part of July Section 73 Application.	TW
02	30.11.16	Internal layouts updated in line with drawings 400-001 to 400-021	TW
01	23.11.16	Core C residential mix updated.	TW
-	16.11.16	Issue to the London Borough of Camden.	TW
REV	DATE	NOTES	INT

PLANNING

HUTCHINSON & PARTNERS

3.12 The Record Hall, 16-16A Baldwin's Garden, London, EC1N 7RJ
 1.020 3176 8192 e. info@hutchinsonandpartners.com w. www.hutchinsonandpartners.com

JOB TITLE
Stanley Sidings, 101 Camley Street, Camden

DRAWING TITLE / LOCATION
PROPOSED GA LEVEL 02

DRAWN BY GFV	CHECKED TW	SCALE 1:200 @ A1	STATUS PLANNING
PROJECT 16022	DRAWING NO 01 AP 0010 007	REVISION 03	

CLIENT
Chalk Farm Developments Ltd

© 2018 HUTCHINSON & PARTNERS Limited

THIS DRAWING REPLACES THE PREVIOUSLY APPROVED PLANNING DRAWING 01 AP 0010 007 (02)