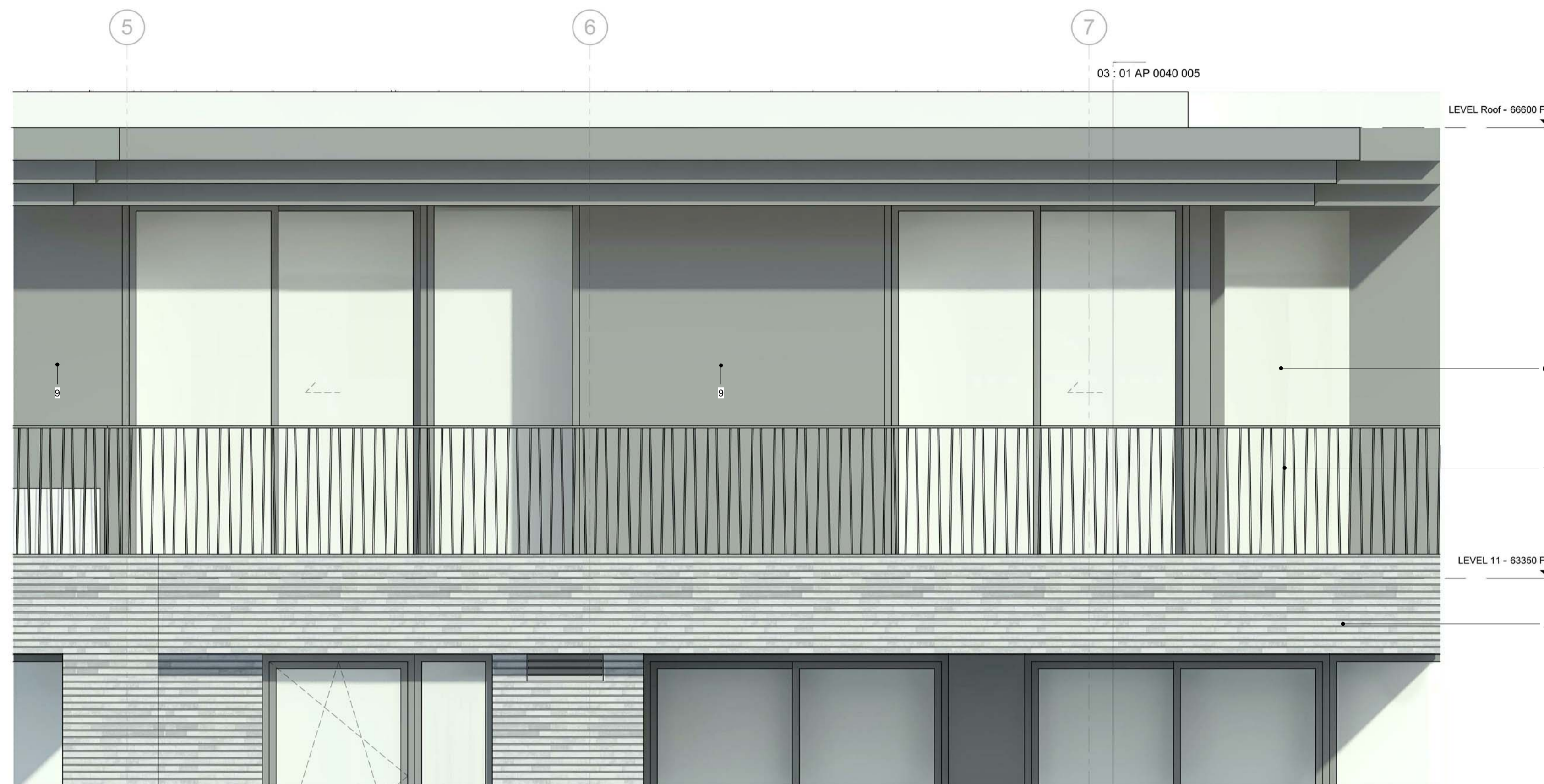
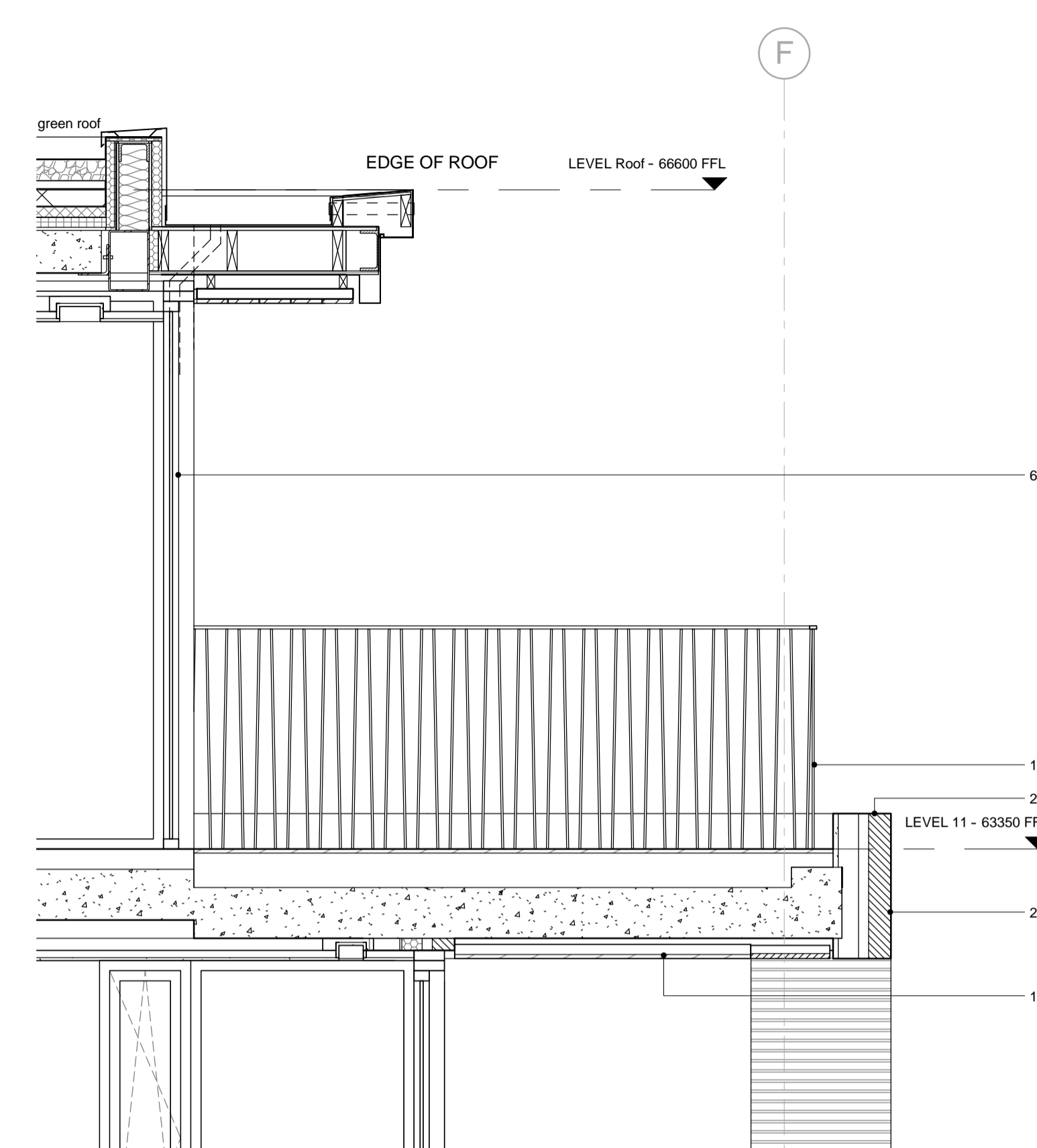


All dimensions are in mm unless otherwise stated
 All dimensions to be verified on site before proceeding with the work
 Any discrepancies to be notified in writing to architect immediately
 All boundaries indicative only and to be confirmed by others

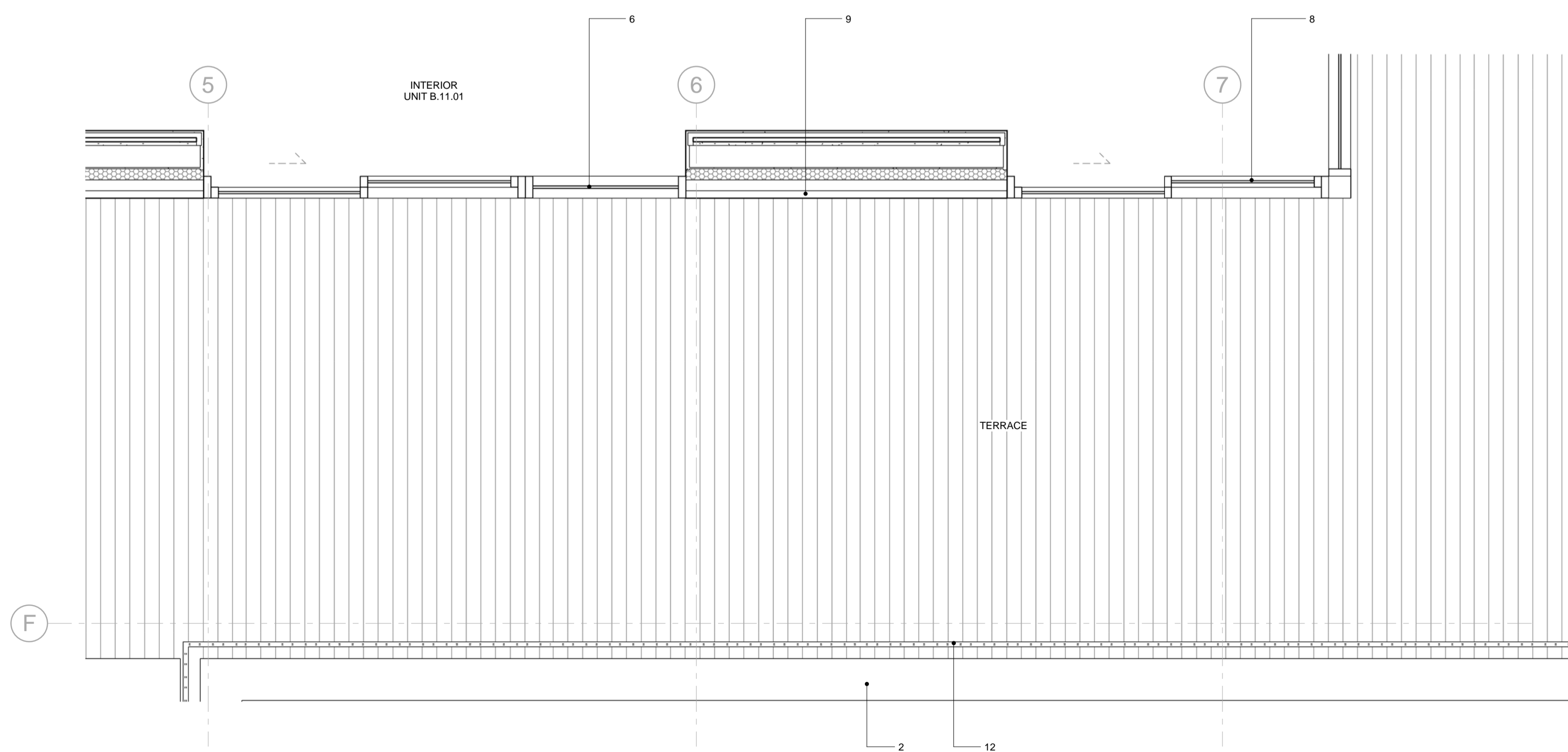
- MATERIAL KEY**
- 1 Brick, Randers Tegh Ultima RT160, Grey recessed mortar joint, Black Grey Y2 Medium from Tarmac.
 - 2 Brick Slip, Randers Tegh Ultima RT160, Grey recessed mortar joint, Black Grey Y2 Medium from Tarmac.
 - 3 Solder Course Brick Slip, Randers Tegh Ultima RT160, Grey recessed mortar joint, Black Grey Y2 Medium from Tarmac.
 - 4 Chamfered Brick
 - 6 Fixed Double Glazed Unit, Schuco
 - 7 Tilt and Turn Double Glazed Unit, Schuco
 - 8 Double Glazed Door, Schuco
 - 9 Metal Spandrel Panel, Schuco
 - 11 Clear Glass Balustrade
 - 12 Metal Balustrade
 - 13 Painted Metal C Channel to Balcony Structure, Aluminium Powder Coated
 - 15 Grooved Decking Boards
 - 16 Timber Balcony Soffit, Thermal Wood
 - 17 Concealed Rainwater Pipe
 - 19 Bespoke Intake/Extraction Vents
 - 21 Metal Copping



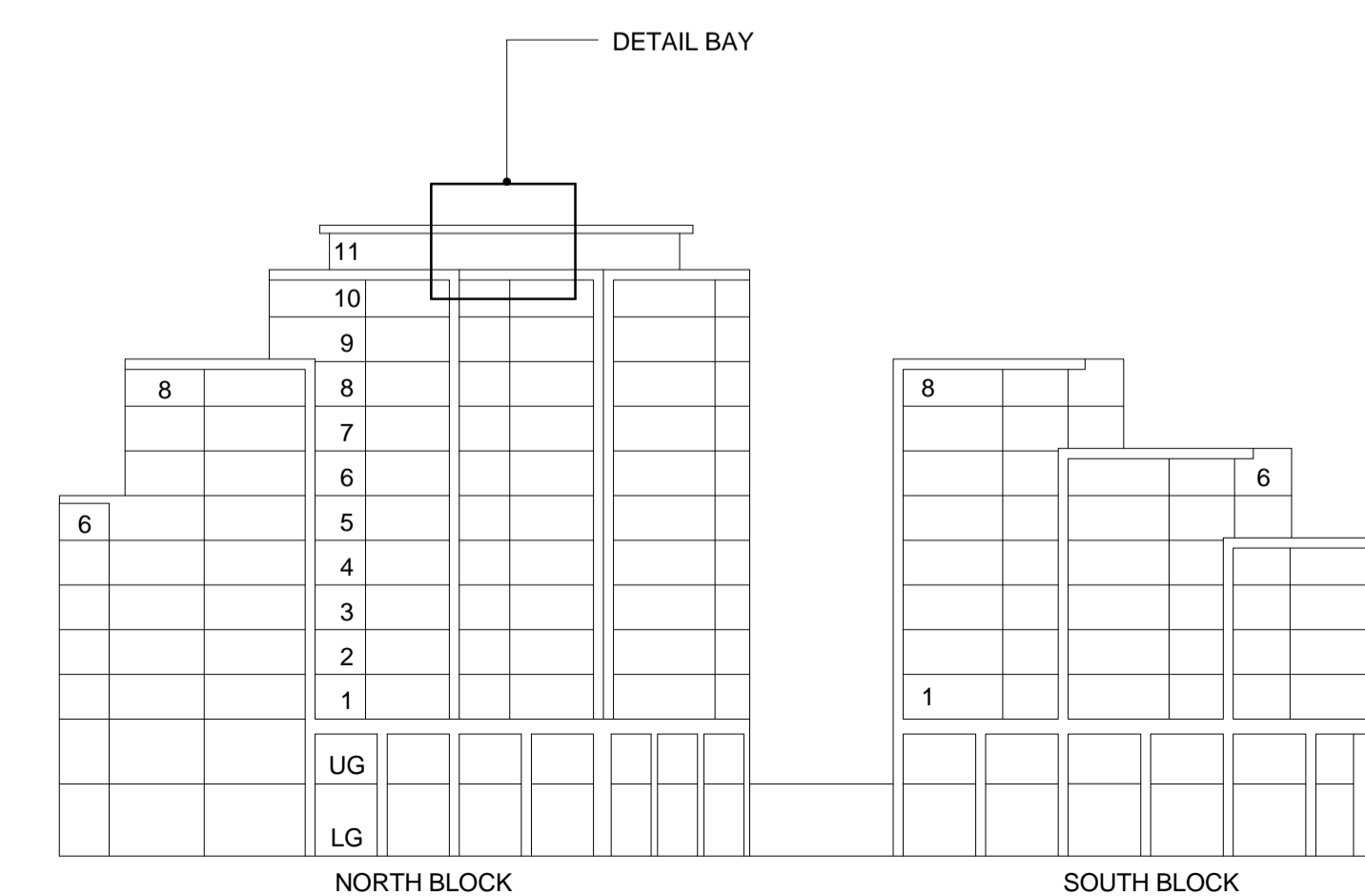
01 - Bay Study E



03 - Section



02 - Plan



Granary Street Key Elevation



-	26.07.18	Issued to London Borough of Camden as part of July Section 73 Application.	TW
REV	DATE	NOTES	INT

PLANNING

HUTCHINSON & PARTNERS

3.12 The Record Hall, 16-16A Baldwin's Garden, London, EC1N 7RJ
 1.020 3176 8192 e.info@hutchinsonandpartners.com w.www.hutchinsonandpartners.com

JOB TITLE
Stanley Sidings, 101 Camley Street, Camden

DRAWING TITLE / LOCATION
Detail Bay Study E

DRAWN BY DH	CHECKED GFV	SCALE 1:25 @ A1 / 1:50 @ A3	STATUS PLANNING
PROJECT 16022	DRAWING NO 01 AP 0040 005	REVISION -	

CLIENT
Chalk Farm Developments Ltd

THIS DRAWING REPLACES THE PREVIOUSLY APPROVED PLANNING DRAWING CML - 334 (P1)