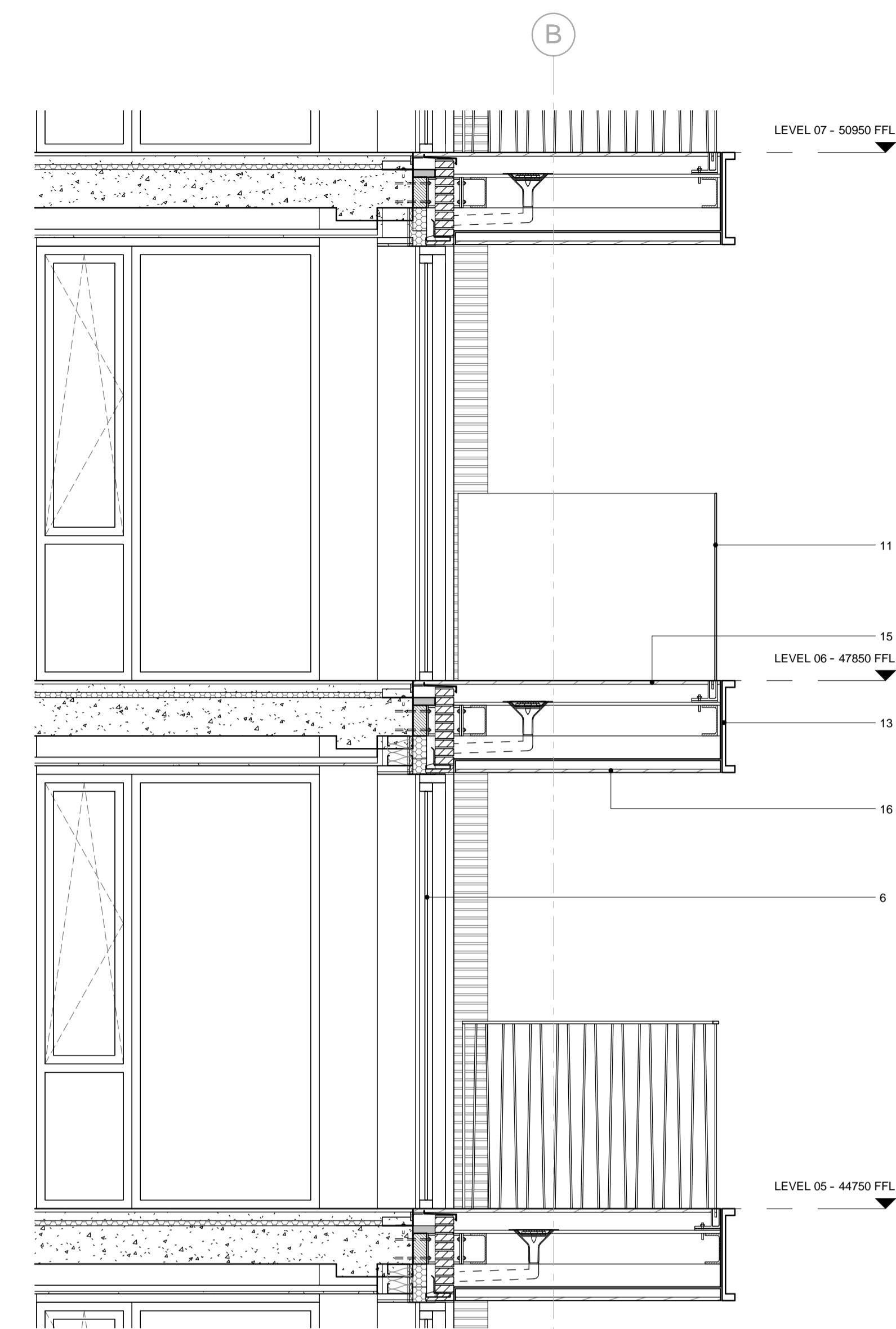
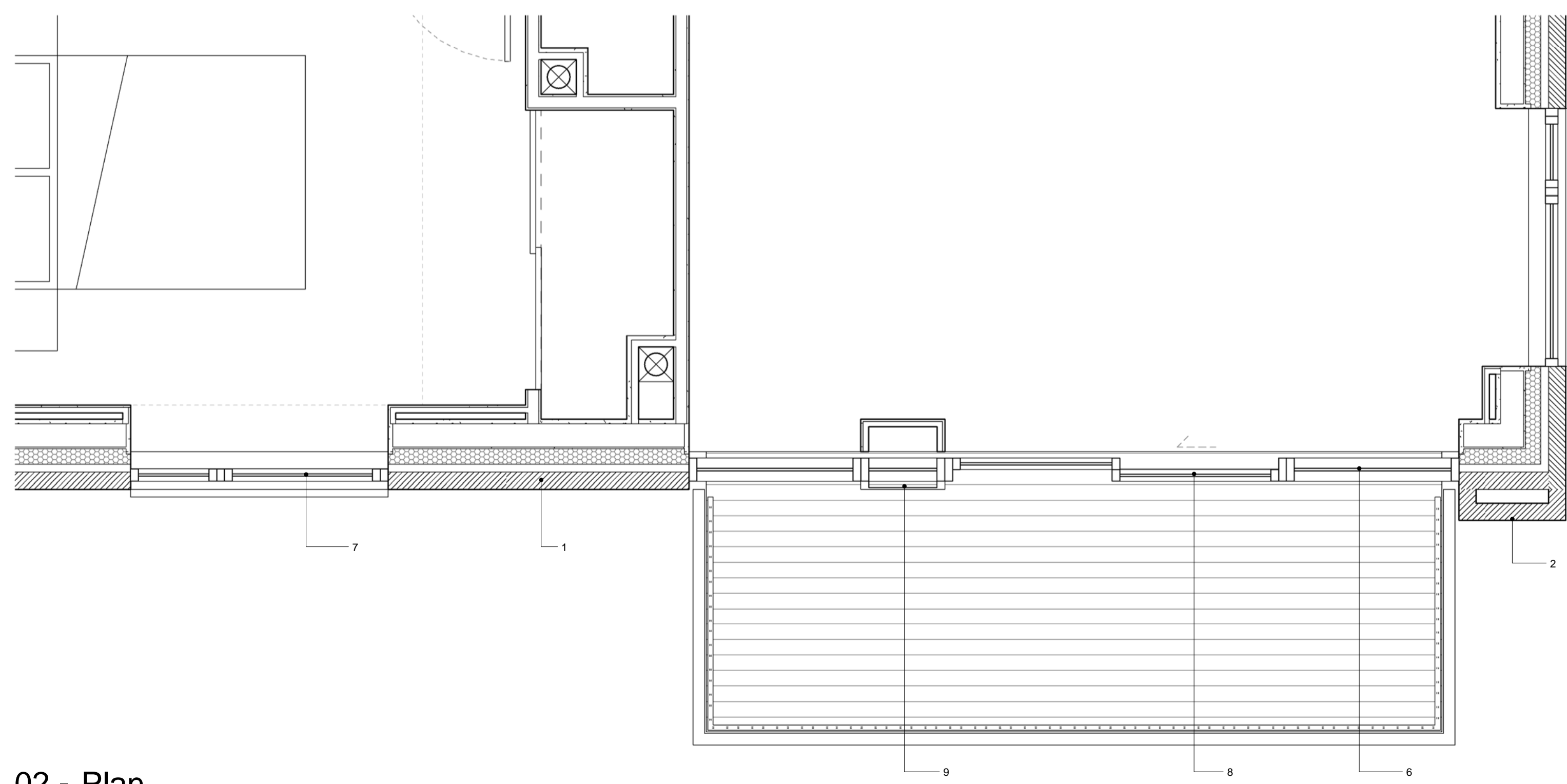




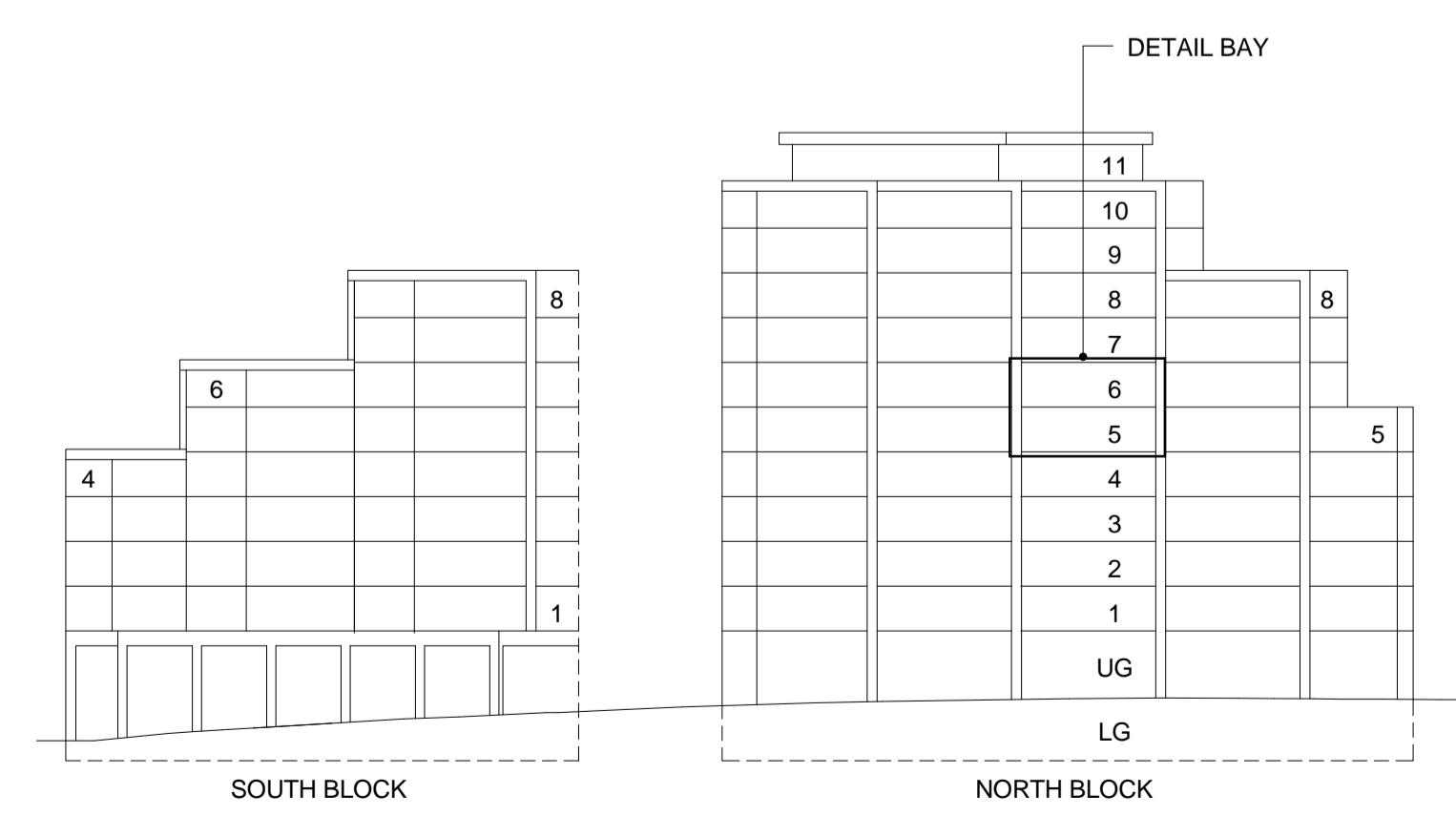
01 - Elevation



03 - Section



02 - Plan



Camley Street Key Elevation

All dimensions are in mm unless otherwise stated  
All dimensions to be verified on site before proceeding with the work  
Any discrepancies to be notified in writing to architect immediately  
All boundaries indicative only and to be confirmed by others

MATERIAL KEY

- 1 Brick, Randers Tegl Ultima RT160. Grey recessed mortar joint, Black Grey Y2 Medium from Tarmac.
- 2 Brick Slip, Randers Tegl Ultima RT160. Grey recessed mortar joint, Black Grey Y2 Medium from Tarmac.
- 3 Solder Course Brick Slip, Randers Tegl Ultima RT160. Grey recessed mortar joint, Black Grey Y2 Medium from Tarmac.
- 4 Chamfered Brick
- 6 Fixed Double Glazed Unit, Schuco
- 7 Tilt and Turn Double Glazed Unit, Schuco
- 8 Double Glazed Door, Schuco
- 9 Metal Spandrel Panel, Schuco
- 11 Clear Glass Balustrade
- 12 Metal Balustrade
- 13 Painted Metal C Channel to Balcony Structure, Aluminium Powder Coated
- 15 Grooved Decking Boards
- 16 Timber Balcony Soffit, Thermal Wood
- 17 Concealed Rainwater Pipe
- 19 Bespoke Intake/Extraction Vents
- 21 Metal Copping

-	26.07.18	Issued to London Borough of Camden as part of July Section 73 Application.	TW
REV	DATE	NOTES	INT

PLANNING

**HUTCHINSON & PARTNERS**

3.12 The Record Hall, 16-16A Baldwin's Garden, London, EC1N 7RJ  
T. 020 3176 8192 e. info@hutchinsonandpartners.com w. www.hutchinsonandpartners.com

JOB TITLE  
Stanley Sidings, 101 Camley Street, Camden

DRAWING TITLE / LOCATION  
Detail Bay Study D

DRAWN BY DH	CHECKED GFV	SCALE 1:25 @ A1 / 1:50 @ A3	STATUS PLANNING
PROJECT 16022	DRAWING NO 01 AP 0040 004	REVISION -	

CLIENT  
Chalk Farm Developments Ltd

THIS DRAWING REPLACES THE PREVIOUSLY APPROVED PLANNING DRAWING CML - 333 (P1)