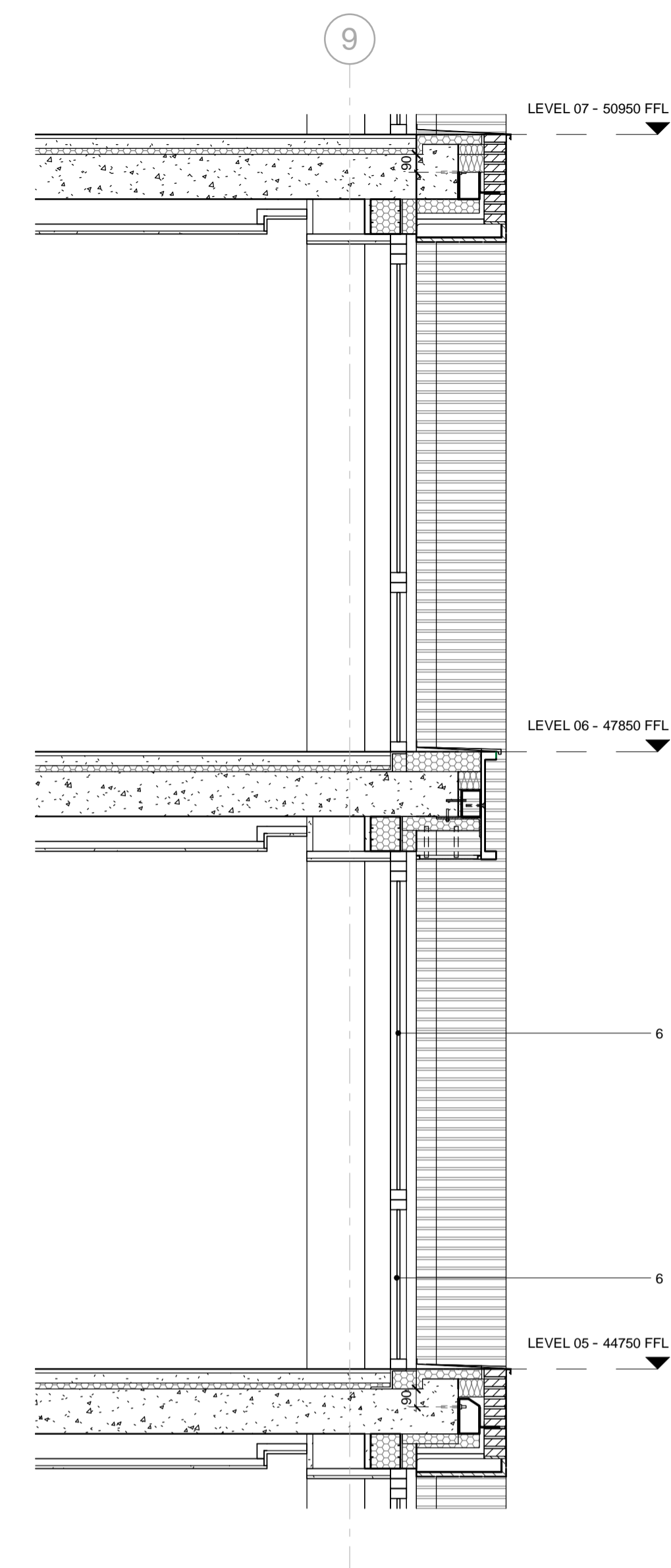
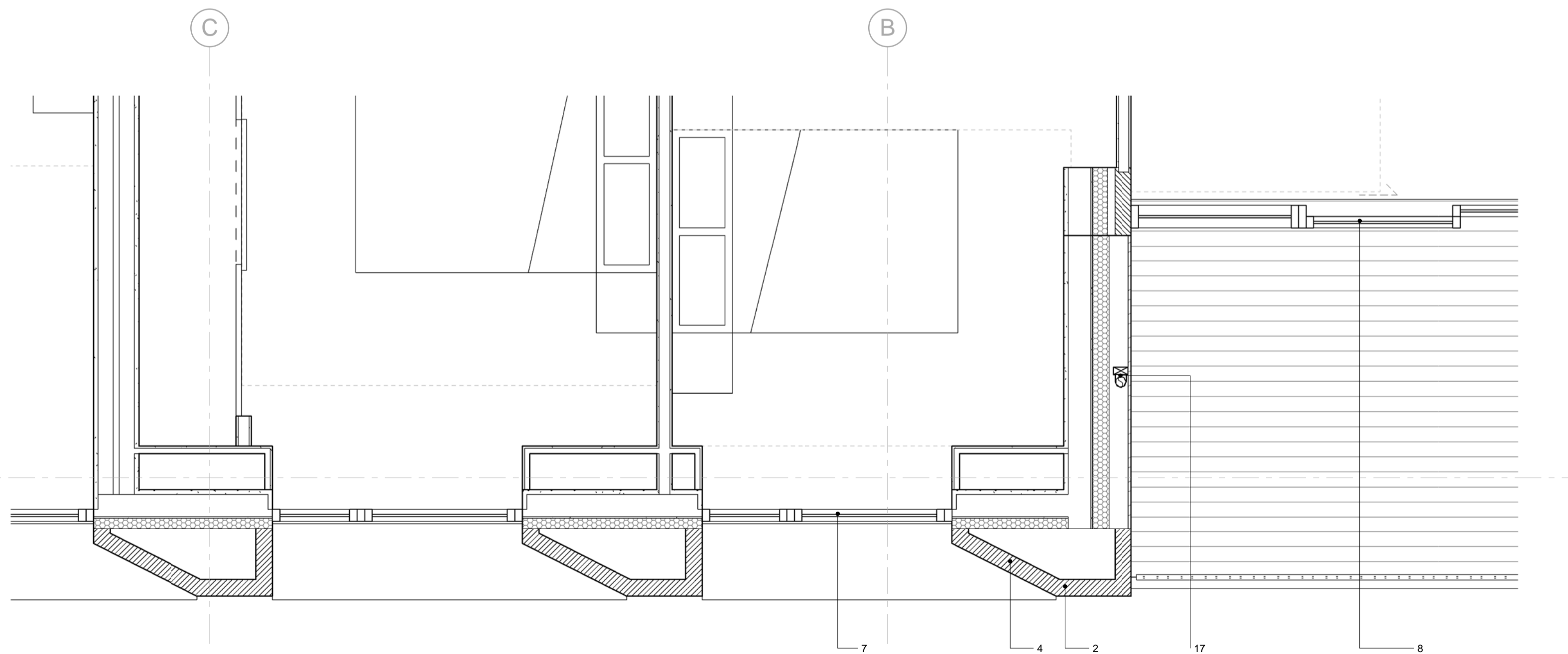




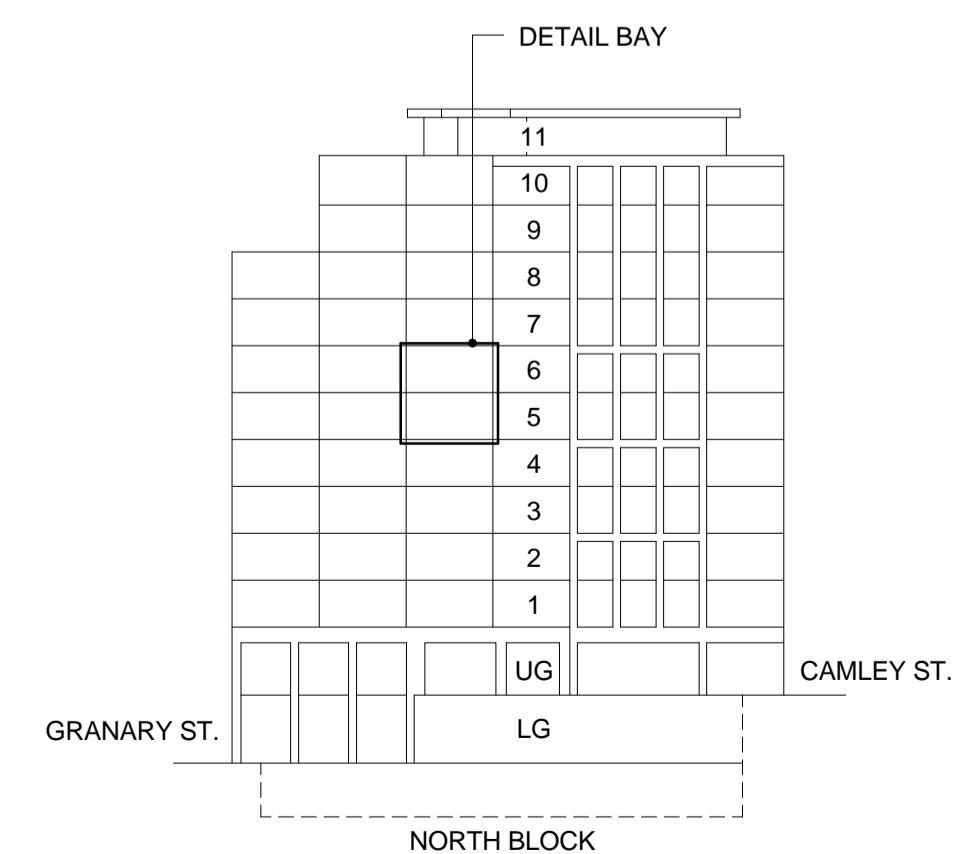
01 - Elevation



03 - Section



02 - Plan



North Block Key Elevation

All dimensions are in mm unless otherwise stated  
 All dimensions to be verified on site before proceeding with the work  
 Any discrepancies to be notified in writing to architect immediately  
 All boundaries indicative only and to be confirmed by others

**MATERIAL KEY**

- 1 Brick, Randers Tegl Ultima RT160. Grey recessed mortar joint, Black Grey Y2 Medium from Tarmac.
- 2 Brick Slip, Randers Tegl Ultima RT160. Grey recessed mortar joint, Black Grey Y2 Medium from Tarmac.
- 3 Soldier Course Brick Slip, Randers Tegl Ultima RT160. Grey recessed mortar joint, Black Grey Y2 Medium from Tarmac.
- 4 Chamfered Brick
- 6 Fixed Double Glazed Unit, Schuco
- 7 Tilt and Turn Double Glazed Unit, Schuco
- 8 Double Glazed Door, Schuco
- 9 Metal Spandrel Panel, Schuco
- 11 Clear Glass Balustrade
- 12 Metal Balustrade
- 13 Painted Metal C Channel to Balcony Structure, Aluminium Powder Coated
- 15 Grooved Decking Boards
- 16 Timber Balcony Soffit, Thermal Wood
- 17 Concealed Rainwater Pipe
- 19 Bespoke Intake/Extraction Vents
- 21 Metal Copping

-	26.07.18	Issued to London Borough of Camden as part of July Section 73 Application.	TW
REV	DATE	NOTES	INT

**PLANNING**

**HUTCHINSON & PARTNERS**

3.12 The Record Hall, 16-16A Baldwin's Garden, London, EC1N 7RJ  
 1.020 3176 8192 e.info@hutchinsonandpartners.com w.www.hutchinsonandpartners.com

JOB TITLE  
**Stanley Sidings, 101 Camley Street, Camden**

DRAWING TITLE / LOCATION  
**Detail Bay Study C**

DRAWN BY DH	CHECKED GFV	SCALE 1:25 @ A1 / 1:50 @ A3	STATUS PLANNING
----------------	----------------	--------------------------------	--------------------

PROJECT <b>16022</b>	DRAWING NO <b>01 AP 0040 003</b>	REVISION -
-------------------------	-------------------------------------	---------------

CLIENT  
**Chalk Farm Developments Ltd**

**THIS DRAWING REPLACES THE PREVIOUSLY APPROVED PLANNING DRAWING CML - 332 (P1)**

