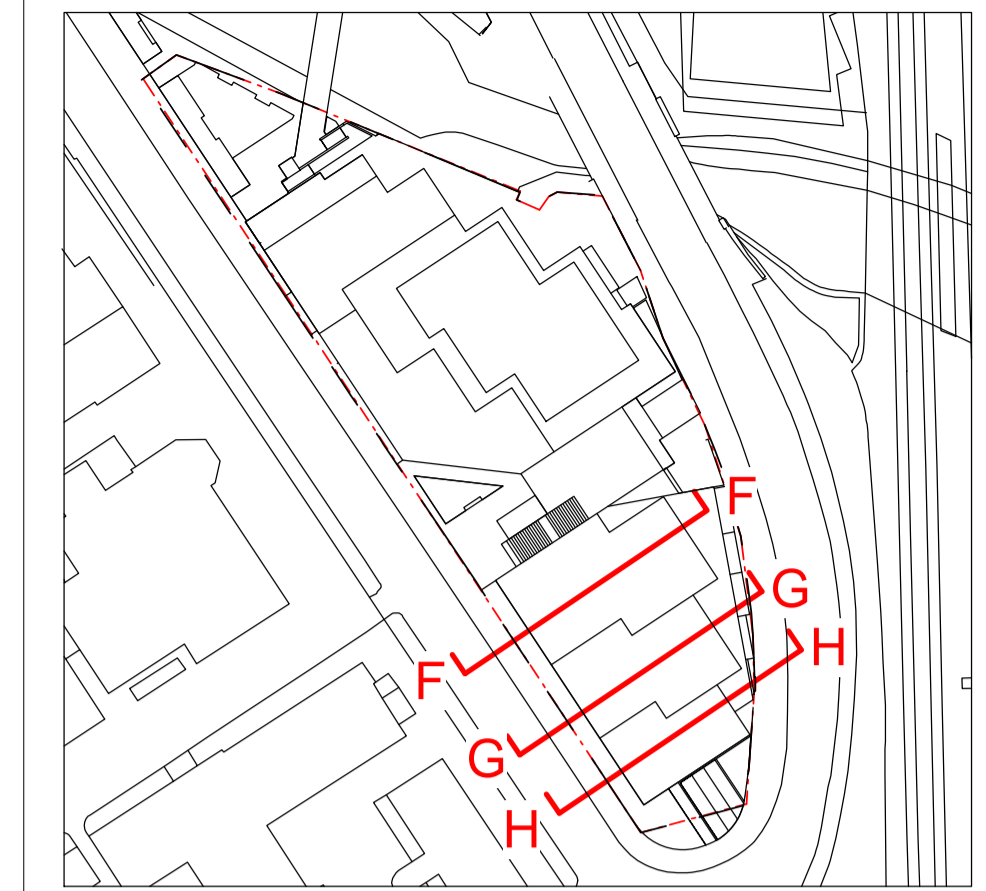
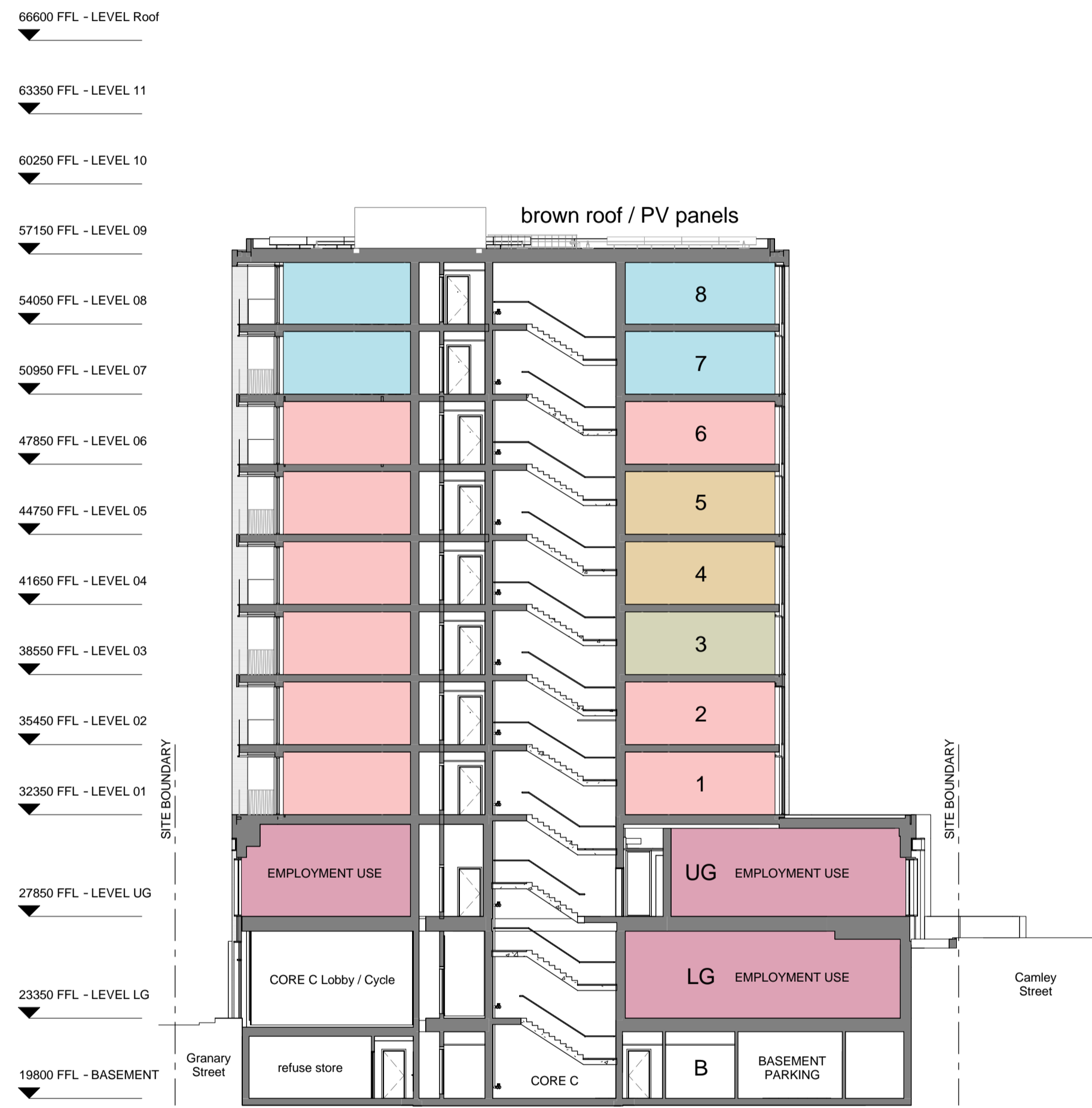


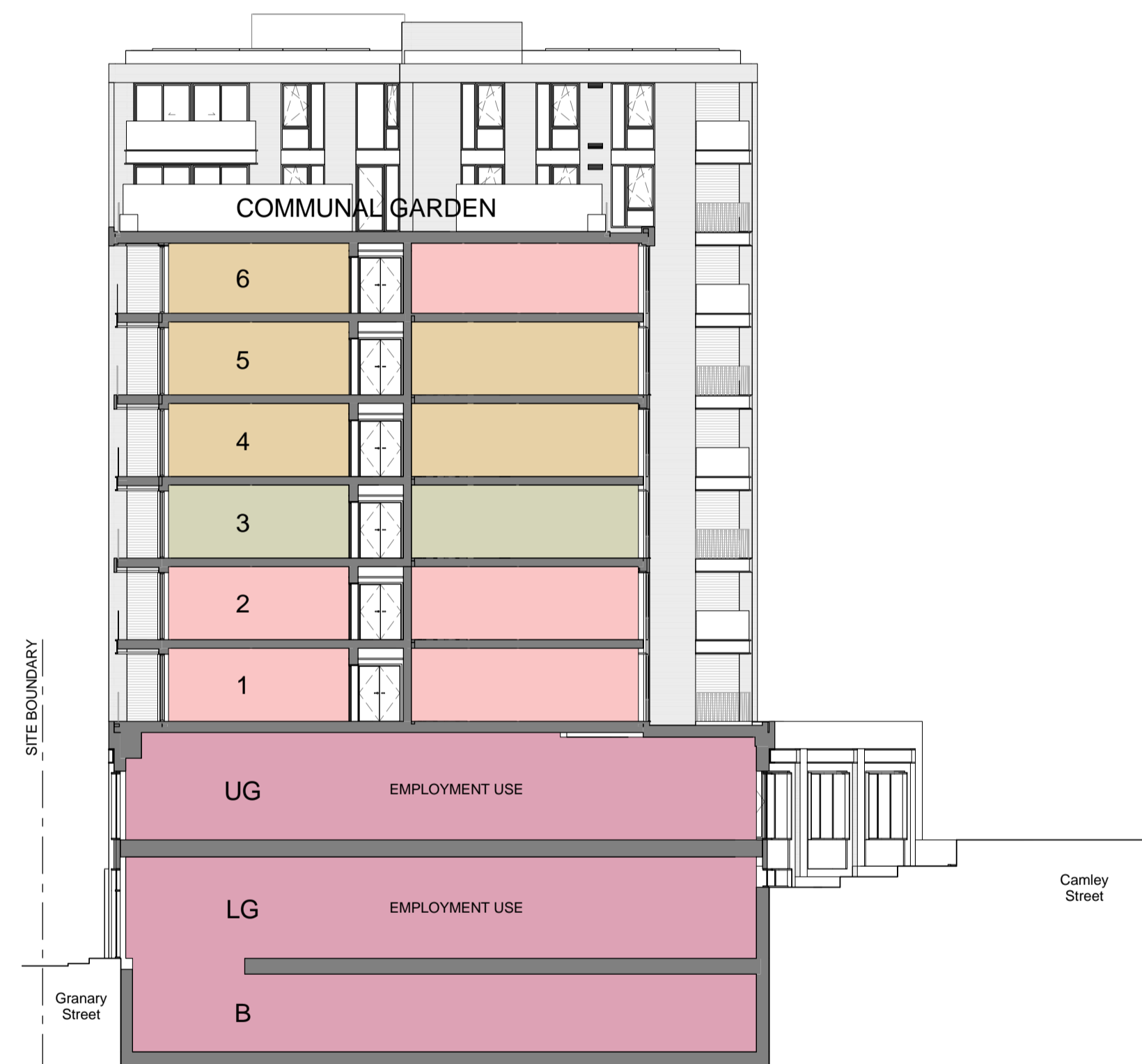
All dimensions are in mm unless otherwise stated  
 All dimensions to be verified on site before proceeding with the work  
 Any discrepancies to be notified in writing to architect immediately  
 All boundaries indicative only and to be confirmed by others



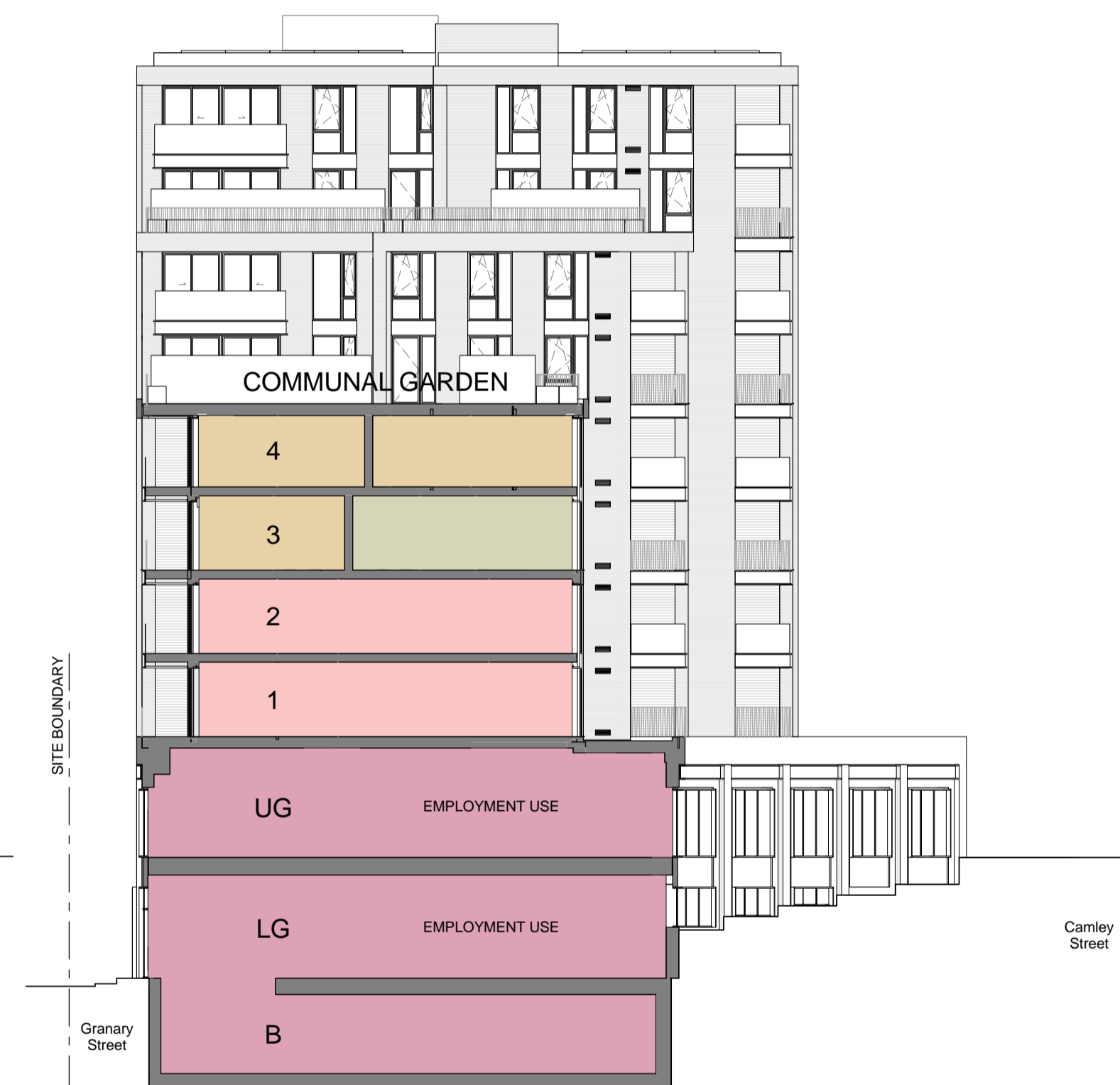
- Key**
- Residential Use**
- Open Market
  - Shared Ownership
  - Intermediate Rent
  - Affordable Rent
- A** Accessible Adaptable Apartments  
**R** Residential Car Parking Spaces
- Other Use**
- Refuse
  - Cycle Storage
  - Residential Amenity
  - Employment Use
  - Plant
  - Refuse Storage
  - Cycle Storage
- Access**
- Employment Use Entrance
  - Main Residential Entrance (Private Units)
  - Combined Residential Entrance (Affordable/Private Units)
- Boundary**
- Planning Submission Boundary
- Commercial Notes**
- Internal layouts shown indicatively



Section FF



Section GG



Section HH

04	26.07.18	Issued to London Borough of Camden as part of July Section 73 Application.	TW
03	26.01.17	Intermediate rent tenure added	TW
02	30.11.16	Reverted to Scheme issued on 16th Nov.	TW
01	23.11.16	Core C residential mix updated.	TW
-	16.11.16	Issue to the London Borough of Camden.	TW
REV	DATE	NOTES	INT

**PLANNING**

**HUTCHINSON & PARTNERS**

3.12 The Record Hall, 16-16A Baldwin's Garden, London, EC1N 7RJ  
 1.020 3176 8192 e.info@hutchinsonandpartners.com w.www.hutchinsonandpartners.com

**JOB TITLE**  
 Stanley Sidings, 101 Camley Street, Camden

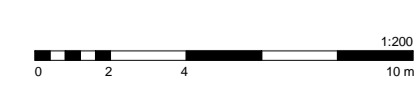
**DRAWING TITLE / LOCATION**  
 CROSS SECTIONS (SOUTH) FF GG HH

<b>DRAWN BY</b> DH	<b>CHECKED</b> GFV	<b>SCALE</b> 1:100 @ A1 / 1:200 @ A3	<b>STATUS</b> PLANNING
<b>PROJECT</b> 16022	<b>DRAWING NO</b> 01 AP 0020 003	<b>REVISION</b> 04	

**CLIENT**  
 Chalk Farm Developments Ltd

© 2018 HUTCHINSON & PARTNERS Limited

THIS DRAWING REPLACES THE PREVIOUSLY APPROVED PLANNING DRAWING 01 AP 0020 003 (03)



26/07/2018 14:18