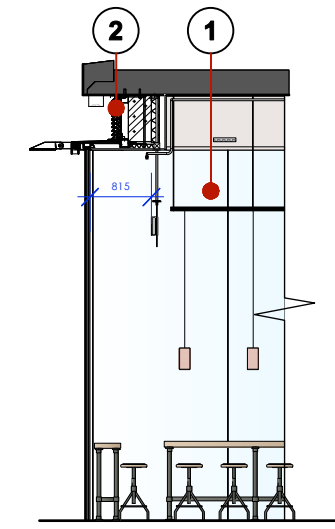
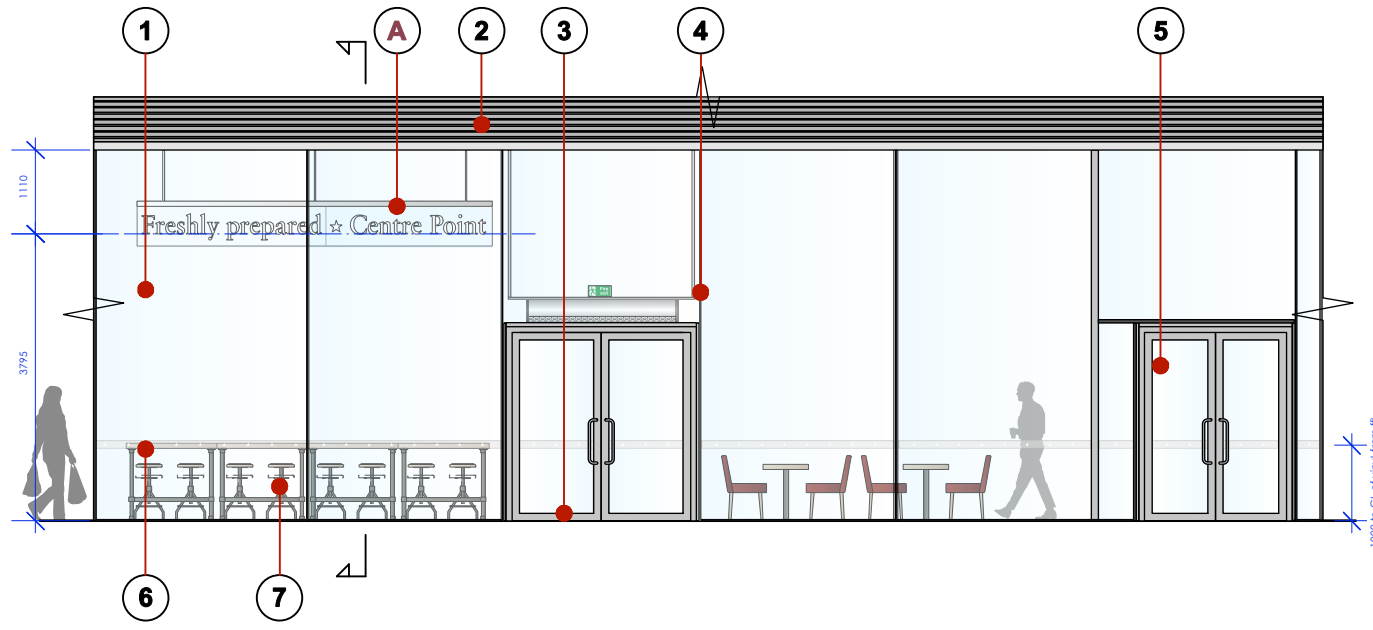
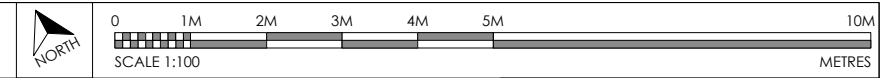


NOTES:

- ① **SHOPFRONT GLAZING - FULL HEIGHT:**
existing full height structural glass with silicone joints
- ② **SHOPFRONT LOUVRE:**
existing air supply louvres to be retained and utilised
- ③ **MAIN ENTRANCE (WEST):**
installed by landlord - retained as is
- ④ **SILICONE JOINTS:**
full height silicone joints with black tinted edges
- ⑤ **EXISTING ENTRANCE (WEST):**
to be locked shut
- ⑥ **VINYL MANIFESTATION FOOD STRIP:**
100mm opaque vinyl strip with white stars applied to internal face of glazing centre line of stars 1000mm from internal floor level - graphic content tbc by Pret Creative
- ⑦ **POSEUR BENCHES:**
positioned as shown behind glazing refer to 1562-PRET-01.1 for quantities
- ⑧ **EXISTING LISTED COLUMNS:**
behind glazing - to be retained as is with no fixings
- ⑨ **LINE OF SUSPENDED LIGHTING TRACK:**
refer to 1562-PRET-07.1 for heights
- ⑩ **ENTRANCE STEPS UP:**
2no. equal risers with 300mm deep goings note: tubular s/s handrails as shown
- ⑪ **STALLRISER:**
existing stallriser following gradient of passageway
- ⑫ **REAR FACE OF BANQUETTE:**
1100mm high seating to passageway glazing with oak slatted timbers with 3no. perforated metal lights to rear shelf
- ⑬ **PAVEMENT LINE:**
blue dashed line indicates pavement level at Eamshaw St (East) entrance
- ⑭ **FEATURE RED PERFORATED METAL PENDANTS:**
2000mm affl to u/s pendants refer to 1562-PRET-07.1 for heights
- ⑮ **PAVEMENT LINE:**
red dashed line indicates pavement level at West entrance and internal floor height
- ⑯ **SECONDARY ENTRANCE-EARNSHAW ST (EAST):**
installed by landlord - retained as is
- ⑰ **STALLRISER:**
existing stallriser to Eamshaw St elevation retained as is

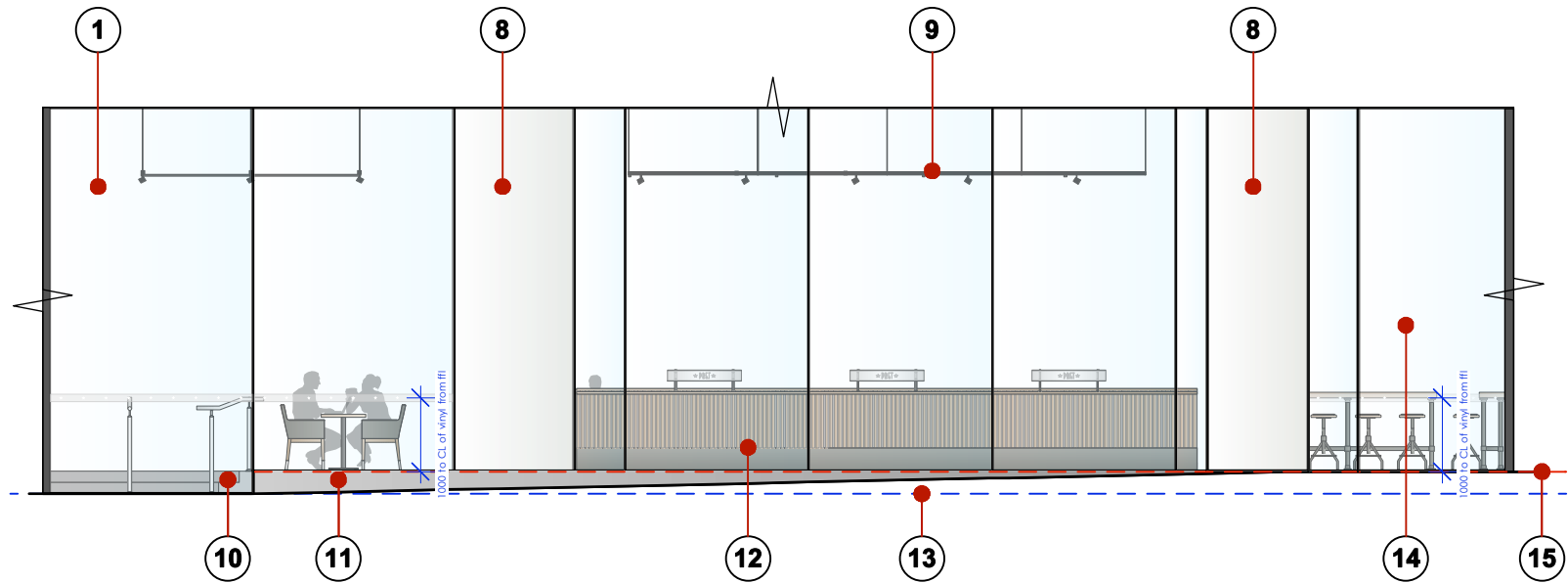


proposed
External West Elevation (main)
scale 1:100

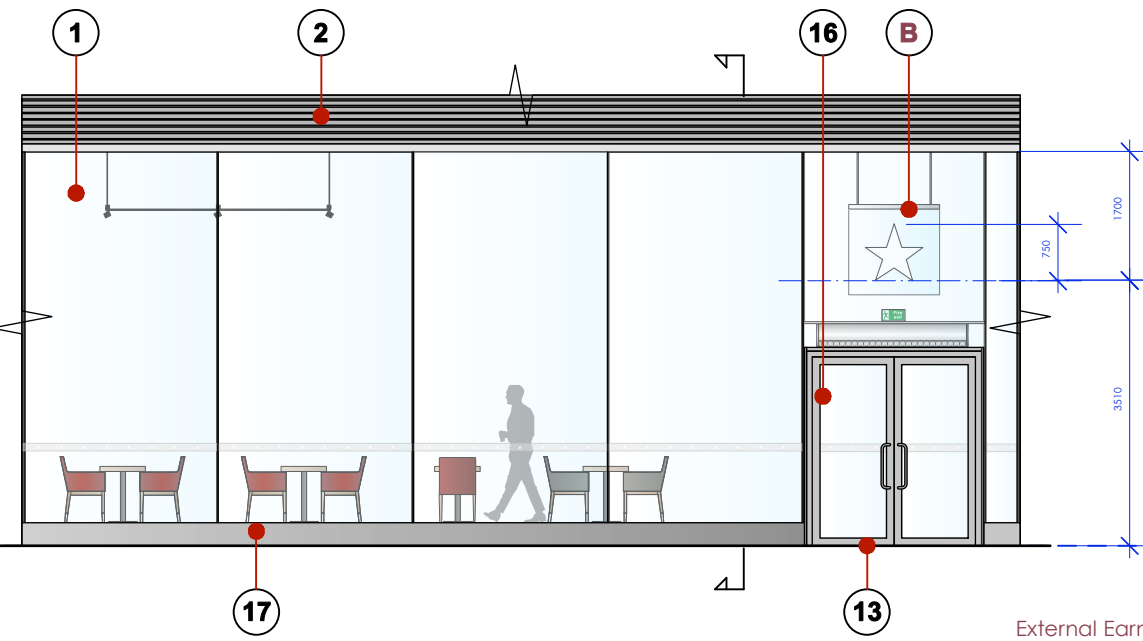
PROPOSED SIGNAGE:

SIGN A
NEW INTERNALLY ILLUMINATED LETTERS & STAR
01no. (4550w 350h 35d o/a)note: capital "F" 245mm high
Freshly prepared * Centre Point
internally illuminated letters & star to be step cut from 10mm Opal 030 Cast Perspex acrylic sheet with 70% light transmission with s/s sides bonded directly to 10mm clear perspex panel
note: rear face of letters to have stainless steel blanking plates
power fed from above via 11mm clear acrylic tube
perspex panel fixed to polished s/s continuous fixing rail fixed to polished s/s fixing rods suspended from bulkhead

SIGN B
NEW INTERNALLY ILLUMINATED STAR
01no. (765w 750h 75d o/a)
internally illuminated star to be step cut from 10mm Opal 030 Cast Perspex acrylic sheet with 70% light transmission with s/s sides bonded directly to 10mm clear perspex panel
note: rear face of star to have stainless steel blanking plate
power fed from above via 11mm clear acrylic tube
perspex panel fixed to polished s/s continuous fixing rail fixed to polished s/s fixing rods suspended from bulkhead



proposed
External North Elevation (Side)
scale 1:100



proposed
External Eamshaw St Elevation (Secondary)
scale 1:100

Rev.	Date	By	Description
A	15.03.18	LW	content of text on secondary signage tbc by Pret Creative notation re: unused entrance doors revised to "locked shut"
B	27.03.18	LW	primary signage wording revised to * PRET * secondary signage text content & style revised
C	19.04.18	LW	primary signage size revised
D	23.04.18	LW	primary signage size & style revised
E	01.05.18	LW	secondary signage text revised to "Centre Point"
F	24.05.18	LW	signage revised to "Freshly Prepared * Centre Point" only
G	18.06.18	LW	main fascia sign size revised
H	27.06.18	LW	main fascia sign panel size & fixing detail revised, internally illuminated star sign added to Eamshaw Street entrance, manifestation strip detail revised, height of banquette to window revised

PROJECT
★ PRET A MANGER ★

LOCATION
**Units R06 & R08, Centre Point House
St Giles Square, London, WC2H 8LW**

TITLE
PROPOSED SHOPFRONT

DRAWING No.
1562-PRET-02.2

REVISION	DATE DRAWN	SCALE @ A3
H	08.03.18	1:100

All dimensions to be confirmed on site by Contractor. Structural works to be confirmed by Structural Engineer. All elements to comply with statutory requirements.

Copyright One Red Wall Ltd
Claremont House, 22-24 Claremont Rd, Surbiton, Surrey, KT6 4QU.
tel. 020 83993237
www.oneredwall.com

