

226_V_110

Ground Floor Existing
Cutaway Plan

Scale: NTS @ A3

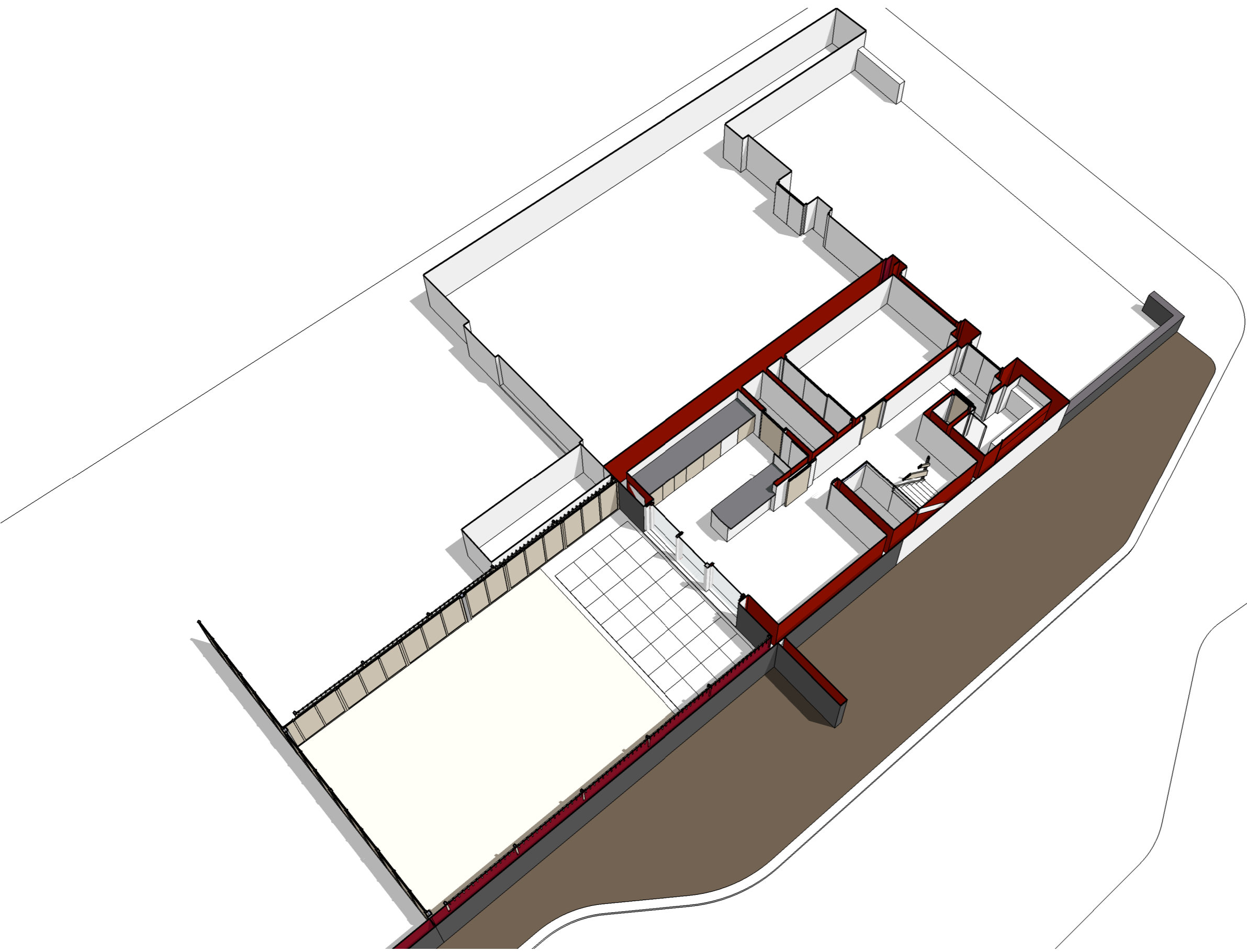
8 August 2011
Revision: A

16 Elsworthy Rise
London NW3 3SH

PLANNING

The information on this drawing is copyright of Barnaby Gunning Architects.
Do not scale from this drawing.
Dimensions are to be verified on site prior to construction.

Notes



Barnaby Gunning Architects 

63 Loudoun Road, London NW8 0DQ, UK
via Bellezza 7, 20136 Milano, Italy
+[44] 20 73 72 24 24
www.barnabygunning.com

226_V_111

First Floor Existing
Cutaway Plan

Scale: NTS @ A3

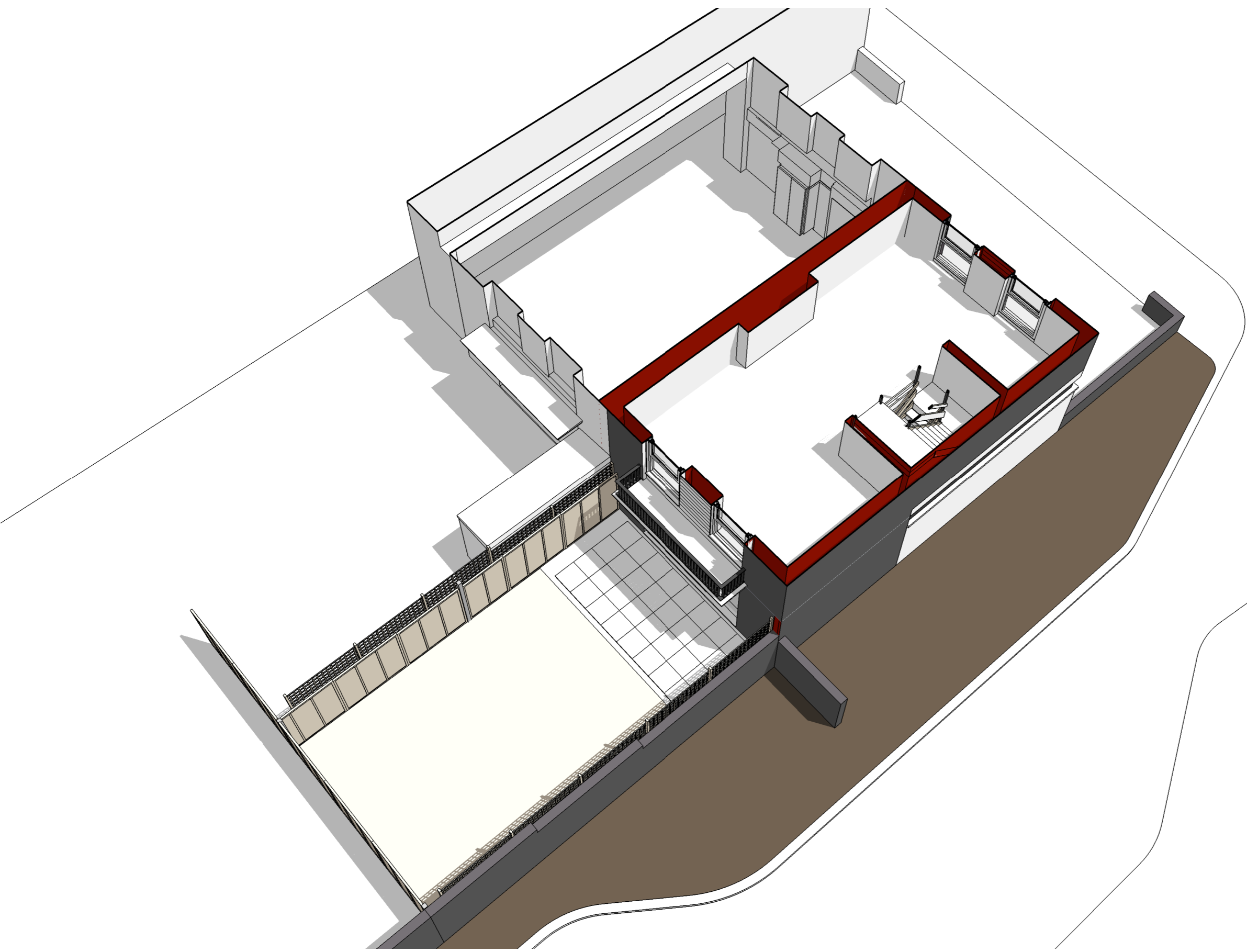
8 August 2011
Revision: A

16 Elsworthy Rise
London NW3 3SH

PLANNING

The information on this drawing is copyright of Barnaby Gunning Architects.
Do not scale from this drawing.
Dimensions are to be verified on site prior to construction.

Notes



Barnaby Gunning Architects 

63 Loudoun Road, London NW8 0DQ, UK
via Bellezza 7, 20136 Milano, Italy
+[44] 20 73 72 24 24
www.barnabygunning.com

materials key

- 1 facing brickwork
- 2 painted timber clapboarding [white]
- 3 rendered masonry
- 4 uPVC window
- 5 painted door
- 6 painted timber fascia [white]
- 7 painted steel balustrade [black]
- 8 aluminium coping
- 9 powder coated aluminium glazed doors
- 10 timber overlap fencing panel
- 11 timber trellis
- 12 pea shingle
- 13 concrete paving

- 14 facing brickwork to match existing
- 15 powder coated steel picture window with opaque glazing
- 16 powder coated aluminium folding sliding door [grey]
- 17 painted steelwork [grey]
- 18 fritted spandrel glass [dark green]
- 19 stone paving
- 20 extensive green roof



226_V_115

Existing Front View
Perspective

Scale: NTS @ A3

08 August 2011
Revision: A

16 Elsworthy Rise
London NW3 3SH

PLANNING

The information on this drawing is copyright of Barnaby Gunning Architects.
Do not scale from this drawing.
Dimensions are to be verified on site prior to construction.

Notes

Barnaby Gunning Architects



63 Loudoun Road, London NW8 0DQ, UK
via Bellezza 7, 20136 Milano, Italy
+[44] 20 73 72 24 24
www.barnabygunning.com

226_V_116

Existing Rear View
Perspective

Scale: NTS @ A3

08 August 2011
Revision: A

16 Elsworthy Rise
London NW3 3SH

PLANNING

The information on this drawing is copyright of Barnaby Gunning Architects.
Do not scale from this drawing.
Dimensions are to be verified on site prior to construction.

Notes

materials key

- 1 facing brickwork
- 2 painted timber clapboarding [white]
- 3 rendered masonry
- 4 uPVC window
- 5 painted door
- 6 painted timber fascia [white]
- 7 painted steel balustrade [black]
- 8 aluminium coping
- 9 powder coated aluminium glazed doors
- 10 timber overlap fencing panel
- 11 timber trellis
- 12 pea shingle
- 13 concrete paving

- 14 facing brickwork to match existing
- 15 powder coated steel picture window with opaque glazing
- 16 powder coated aluminium folding sliding door [grey]
- 17 painted steelwork [grey]
- 18 fritted spandrel glass [dark green]
- 19 stone paving
- 20 extensive green roof



Barnaby Gunning Architects



63 Loudoun Road, London NW8 0DQ, UK
via Bellezza 7, 20136 Milano, Italy
+[44] 20 73 72 24 24
www.barnabygunning.com