

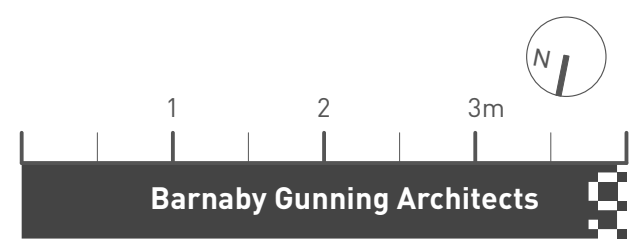
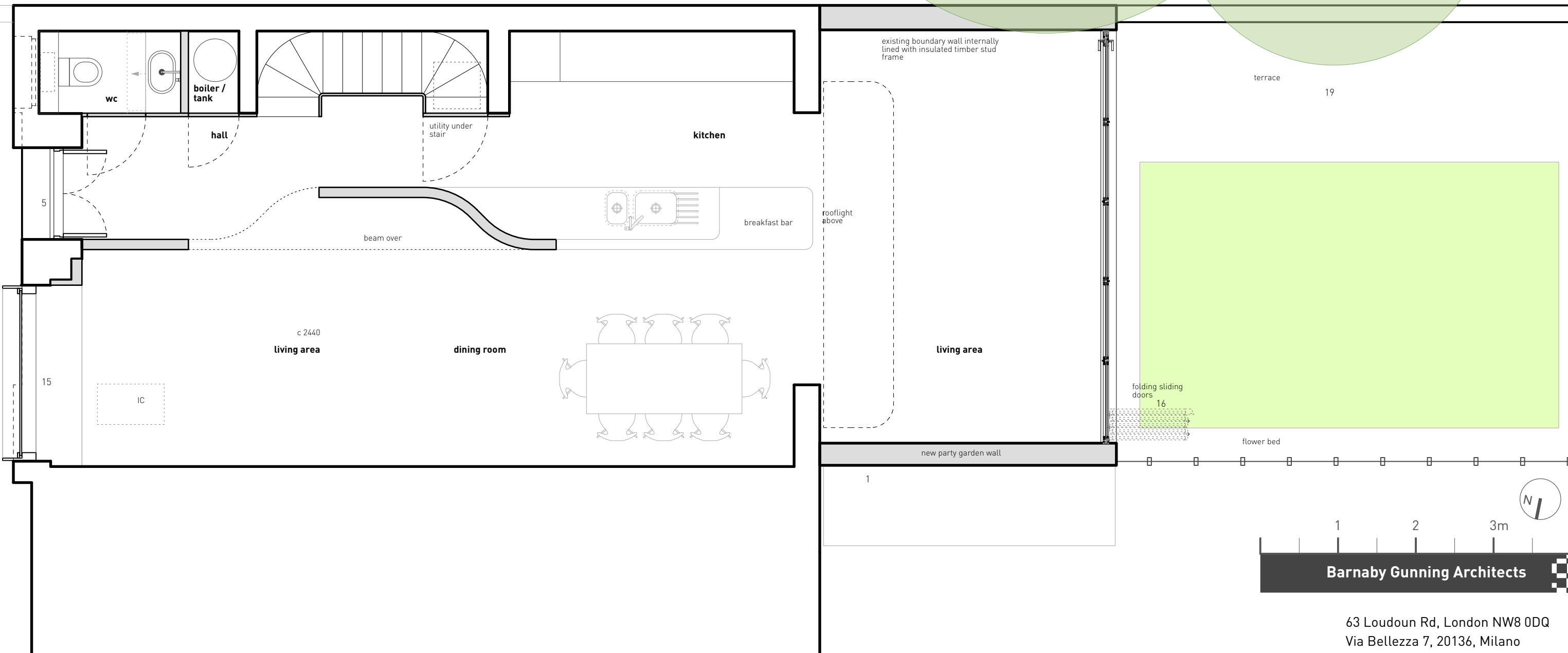
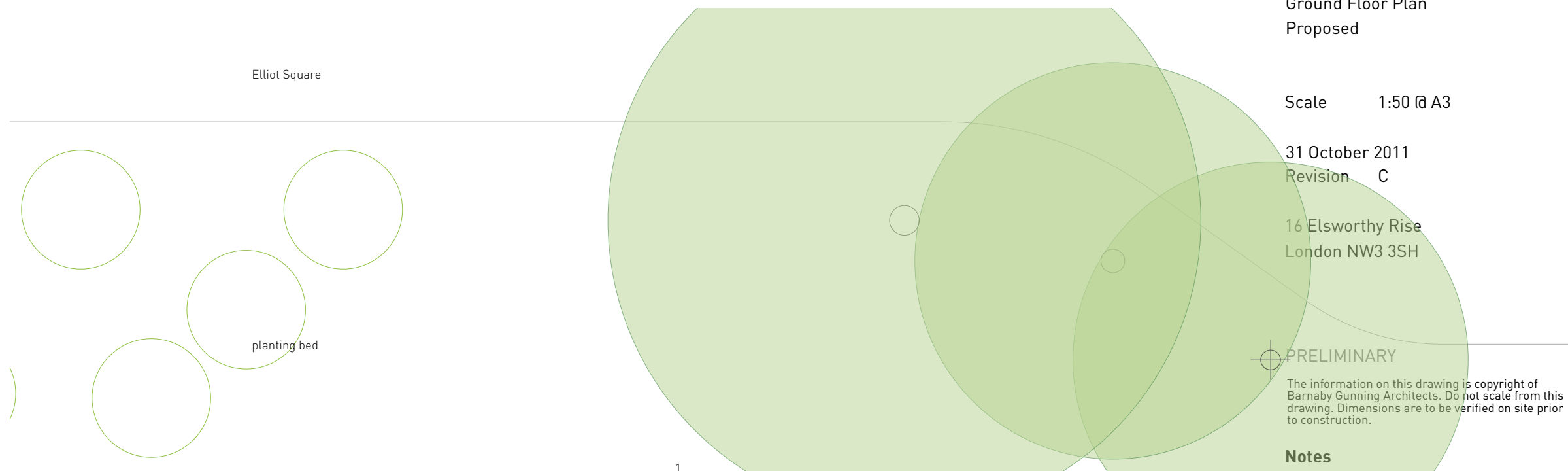
PRELIMINARY

The information on this drawing is copyright of Barnaby Gunning Architects. Do not scale from this drawing. Dimensions are to be verified on site prior to construction.

Notes

key

- 1 facing brickwork
- 2 painted timber clapboarding [white]
- 3 rendered masonry
- 4 uPVC window
- 5 painted timber door
- 6 painted timber fascia [white]
- 7 painted steel balustrade [black]
- 8 aluminium coping
- 9 powder coated aluminium glazed doors
- 10 timber overlap fencing panel
- 11 timber trellis
- 12 pea shingle
- 13 concrete paving
- 14 facing brickwork to match existing
- 15 powder coated steel picture window with opaque glazing
- 16 powder coated aluminium folding sliding door [grey]
- 17 painted steelwork [grey]
- 18 fritted spandrel glass [dark green]
- 19 stone paving
- 20 extensive green roof



226_G_021

First Floor Plan
Proposed

Scale 1:50 @ A3

08 August 2011
Revision B

16 Elsworth Rise
London NW3 3SH

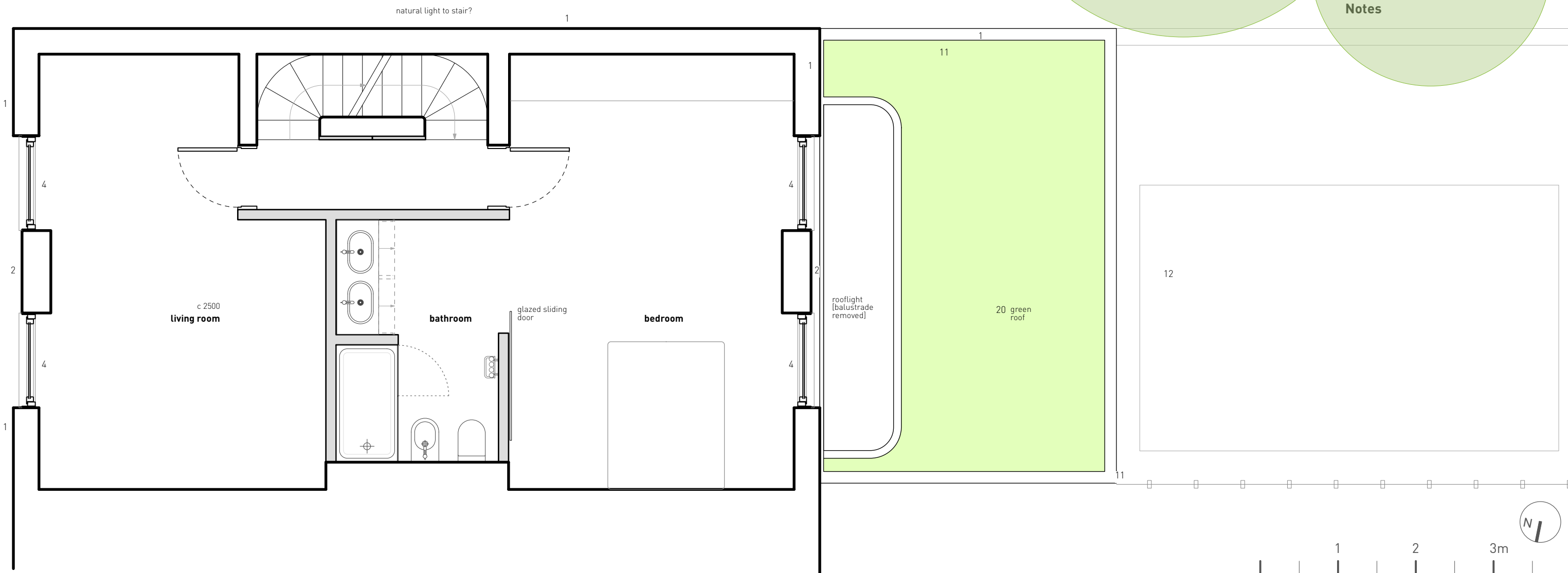
PRELIMINARY

The information on this drawing is copyright of Barnaby Gunning Architects. Do not scale from this drawing. Dimensions are to be verified on site prior to construction.

Notes

key

- 1 facing brickwork
- 2 painted timber clapboarding [white]
- 3 rendered masonry
- 4 uPVC window
- 5 painted timber door
- 6 painted timber fascia [white]
- 7 painted steel balustrade [black]
- 8 aluminium coping
- 9 powder coated aluminium glazed doors
- 10 timber overlap fencing panel
- 11 timber trellis
- 12 pea shingle
- 13 concrete paving
- 14 facing brickwork to match existing
- 15 powder coated steel picture window with opaque glazing
- 16 powder coated aluminium folding sliding door [grey]
- 17 painted steelwork [grey]
- 18 fritted spandrel glass [dark green]
- 19 stone paving
- 20 extensive green roof



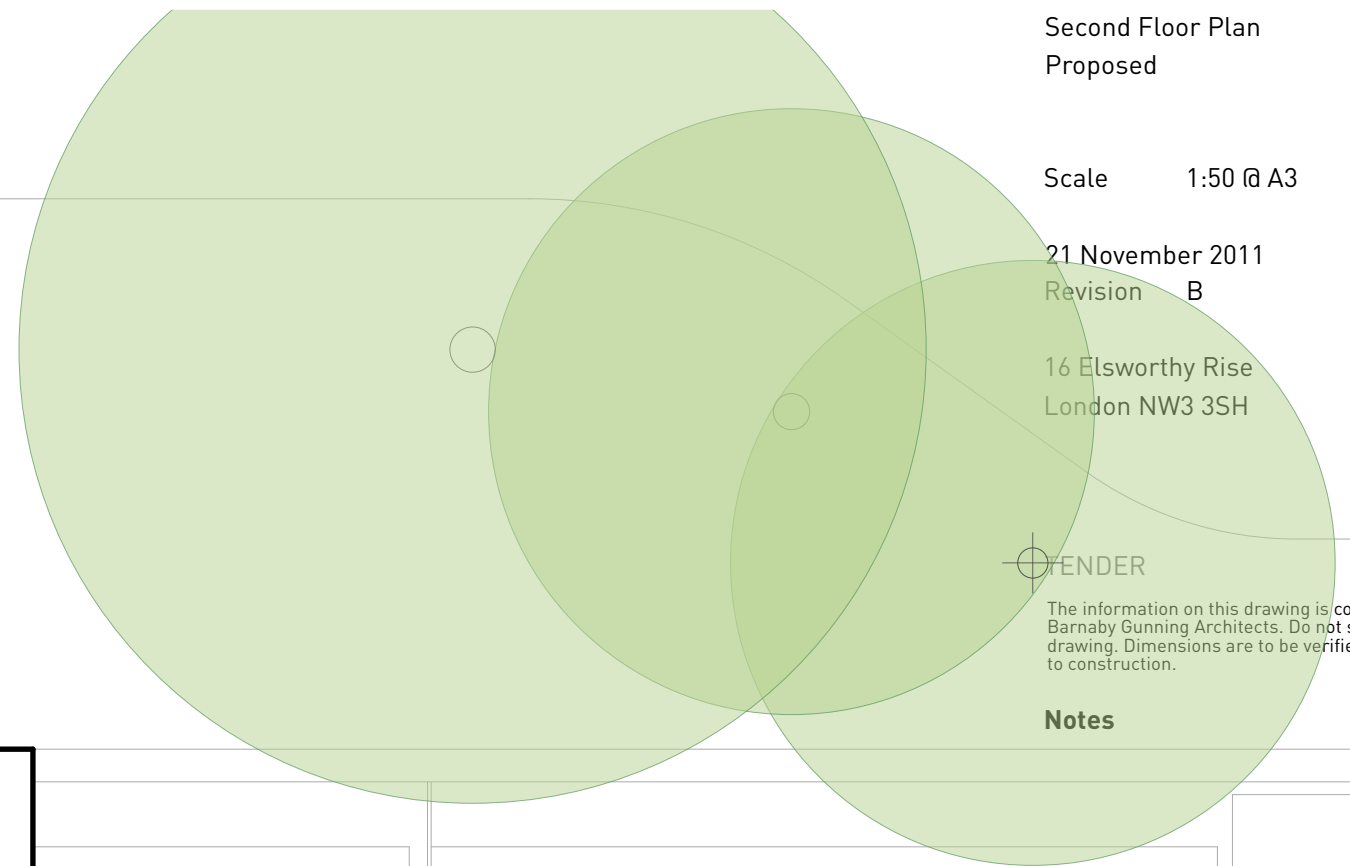
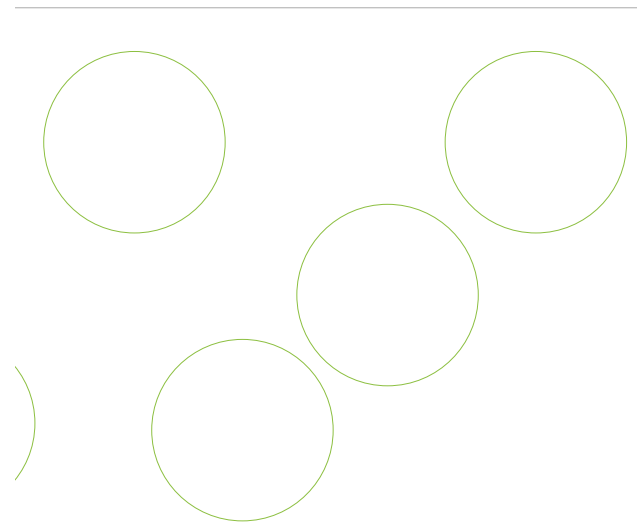
1 2 3m

Barnaby Gunning Architects

63 Loudoun Rd, London NW8 0DQ
 Via Bellezza 7, 20136, Milano
 +[44] 20 73 72 24 24
 www.barnabygunning.com

key

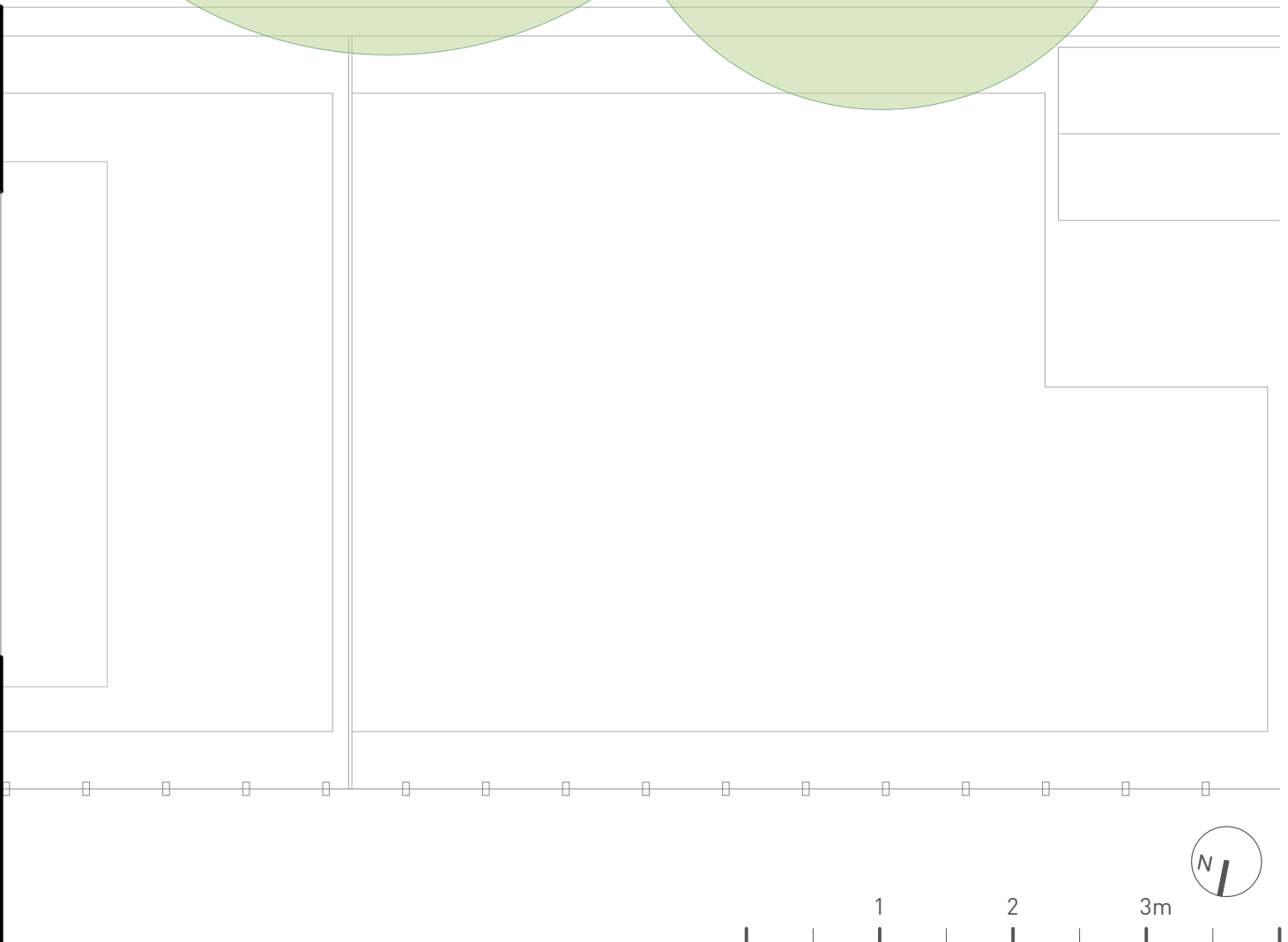
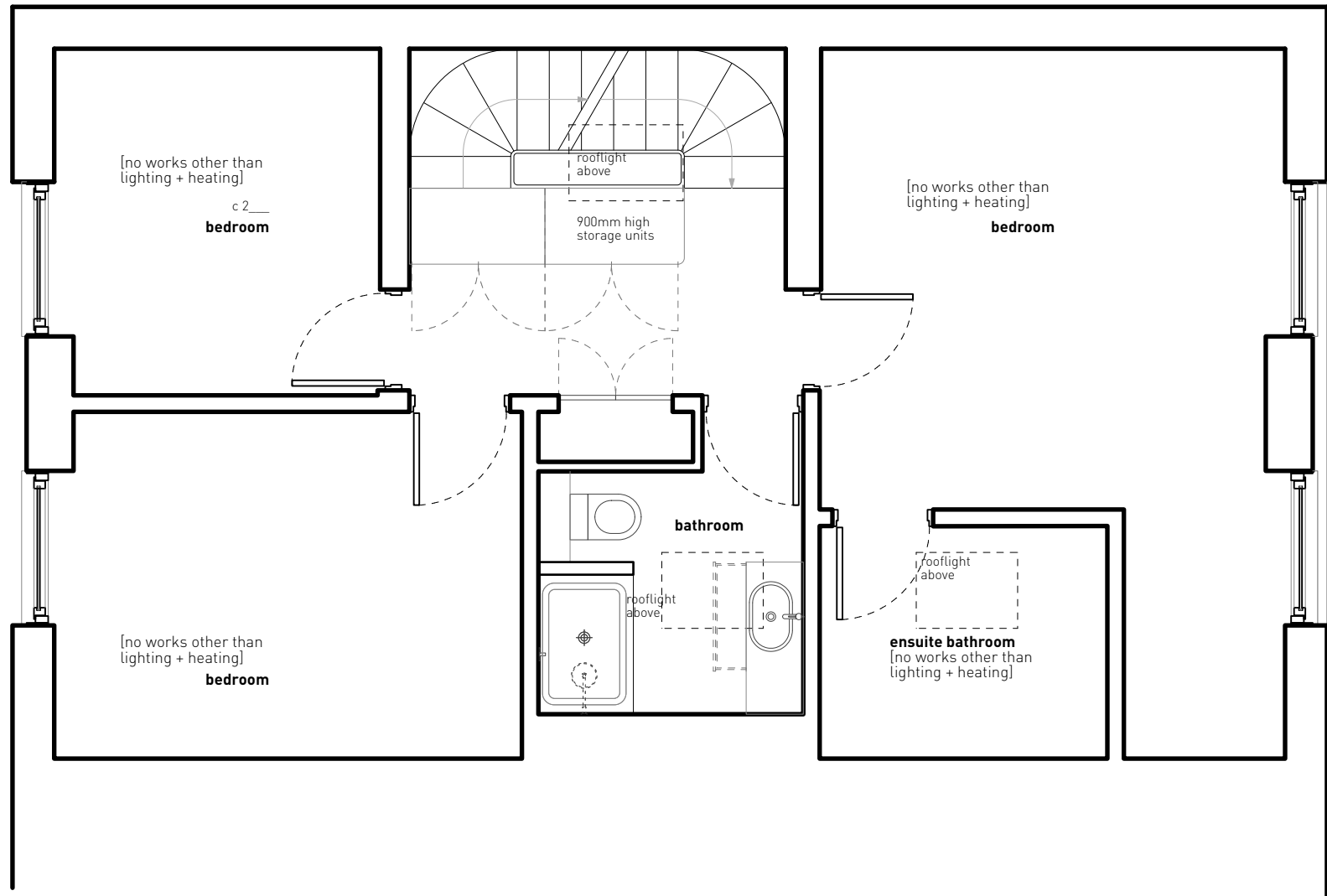
- 1 facing brickwork
- 2 painted timber clapboarding [white]
- 3 rendered masonry
- 4 uPVC window
- 5 painted timber door
- 6 painted timber fascia [white]
- 7 painted steel balustrade [black]
- 8 aluminium coping
- 9 powder coated aluminium glazed doors
- 10 timber overlap fencing panel
- 11 timber trellis
- 12 pea shingle
- 13 concrete paving
- 14 facing brickwork to match existing
- 15 powder coated steel picture window with opaque glazing
- 16 powder coated aluminium folding sliding door [grey]
- 17 painted steelwork [grey]
- 18 fritted spandrel glass [dark green]
- 19 stone paving
- 20 extensive green roof



⊕ TENDER

The information on this drawing is copyright of Barnaby Gunning Architects. Do not scale from this drawing. Dimensions are to be verified on site prior to construction.

Notes



N

1 2 3m

Barnaby Gunning Architects

materials key

- 1 facing brickwork
- 2 painted timber clapboarding [white]
- 3 rendered masonry
- 4 uPVC window
- 5 painted timber door
- 6 painted timber fascia [white]
- 7 painted steel balustrade [black]
- 8 aluminium coping
- 9 powder coated aluminium glazed doors
- 10 timber overlap fencing panel
- 11 timber trellis
- 12 pea shingle
- 13 concrete paving

- 14 facing brickwork to match existing
- 15 powder coated steel picture window with opaque glazing
- 16 powder coated aluminium folding sliding door [grey]
- 17 painted steelwork [grey]
- 18 fritted spandrel glass [dark green]
- 19 stone paving
- 20 extensive green roof

226_G_024

Proposed Front Elevation

Scale: 1:50 @ A3

8 August 2011
Revision: A

16 Elsworthy Rise

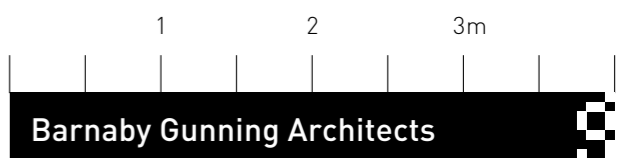
14 Elsworthy Rise

16 Elsworthy Rise
London NW3 3SH

PLANNING

The information on this drawing is copyright of Barnaby Gunning Architects.
Do not scale from this drawing.
Dimensions are to be verified on site prior to construction.

Notes



63 Loudoun Road, London NW8 0DQ, UK
via Bellezza 7, 20136 Milano, Italy
+[44] 20 73 72 24 24
www.barnabygunning.com

materials key

- 1 facing brickwork
- 2 painted timber clapboarding [white]
- 3 rendered masonry
- 4 uPVC window
- 5 painted timber door
- 6 painted timber fascia [white]
- 7 painted steel balustrade [black]
- 8 aluminium coping
- 9 powder coated aluminium glazed doors
- 10 timber overlap fencing panel
- 11 timber trellis
- 12 pea shingle
- 13 concrete paving

- 14 facing brickwork to match existing
- 15 powder coated steel picture window with opaque glazing
- 16 powder coated aluminium folding sliding door [grey]
- 17 painted steelwork [grey]
- 18 fritted spandrel glass [dark green]
- 19 stone paving
- 20 extensive green roof

226_G_025

Proposed Rear Elevation

Scale: 1:50 @ A3

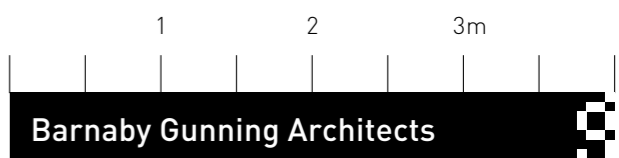
8 August 2011
Revision: A

16 Elsworthy Rise
London NW3 3SH

PLANNING

The information on this drawing is copyright of Barnaby Gunning Architects.
Do not scale from this drawing.
Dimensions are to be verified on site prior to construction.

Notes



63 Loudoun Road, London NW8 0DQ, UK
via Bellezza 7, 20136 Milano, Italy
+[44] 20 73 72 24 24
www.barnabygunning.com

materials key

- 1 facing brickwork
- 2 painted timber clapboarding [white]
- 3 rendered masonry
- 4 uPVC window
- 5 painted timber door
- 6 painted timber fascia [white]
- 7 painted steel balustrade [black]
- 8 aluminium coping
- 9 powder coated aluminium glazed doors
- 10 timber overlap fencing panel
- 11 timber trellis
- 12 pea shingle
- 13 concrete paving

- 14 facing brickwork to match existing
- 15 powder coated steel picture window with opaque glazing
- 16 powder coated aluminium folding sliding door [grey]
- 17 painted steelwork [grey]
- 18 fritted spandrel glass [dark green]
- 19 stone paving
- 20 extensive green roof

226_G_026

Proposed Side [South] Elevation

Scale: 1:50 @ A3

8 August 2011
Revision: A

16 Elsworthy Rise
London NW3 3SH

PLANNING

The information on this drawing is copyright of Barnaby Gunning Architects.
Do not scale from this drawing.
Dimensions are to be verified on site prior to construction.

Notes



Barnaby Gunning Architects

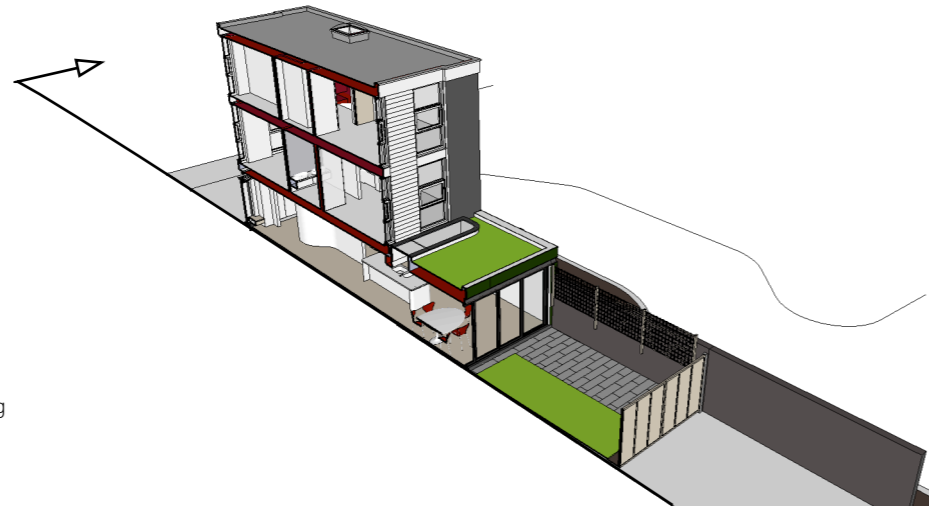


63 Loudoun Road, London NW8 0DQ, UK
via Bellezza 7, 20136 Milano, Italy
+[44] 20 73 72 24 24
www.barnabygunning.com

materials key

- 1 facing brickwork
- 2 painted timber clapboarding [white]
- 3 rendered masonry
- 4 uPVC window
- 5 painted timber door
- 6 painted timber fascia [white]
- 7 painted steel balustrade [black]
- 8 aluminium coping
- 9 powder coated aluminium glazed doors
- 10 timber overlap fencing panel
- 11 timber trellis
- 12 pea shingle
- 13 concrete paving

- 14 facing brickwork to match existing
- 15 powder coated steel picture window with opaque glazing
- 16 powder coated aluminium folding sliding door [grey]
- 17 painted steelwork [grey]
- 18 fritted spandrel glass [dark green]
- 19 stone paving
- 20 extensive green roof



226_G_027

Proposed Section AA

Scale: 1:50 @ A3

8 August 2011
Revision: A

16 Elsworth Rise
London NW3 3SH

PLANNING

The information on this drawing is copyright of Barnaby Gunning Architects.
Do not scale from this drawing.
Dimensions are to be verified on site prior to construction.



Notes

1 2 3m

Barnaby Gunning Architects

63 Loudoun Road, London NW8 0DQ, UK
via Bellezza 7, 20136 Milano, Italy
+[44] 20 73 72 24 24
www.barnabygunning.com