

226\_G\_011

First Floor Plan  
Existing

Scale 1:50 @ A3

08 November 2011  
Revision C

16 Elsworthy Rise  
London NW3 3SH

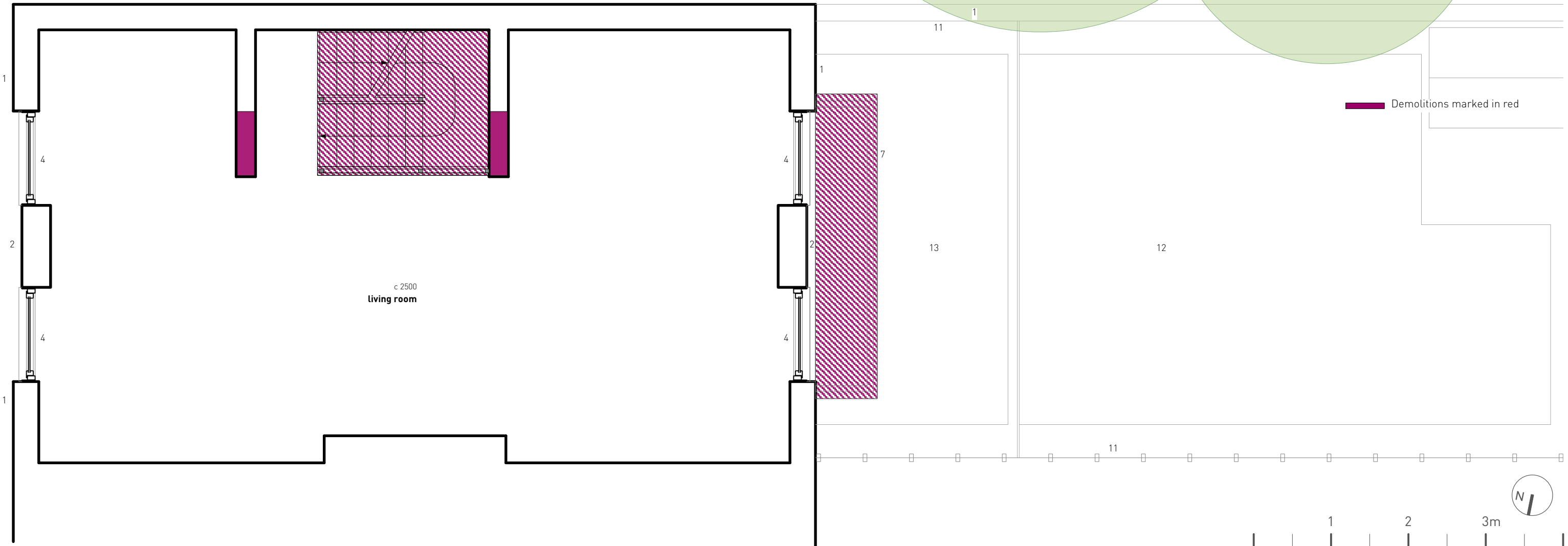
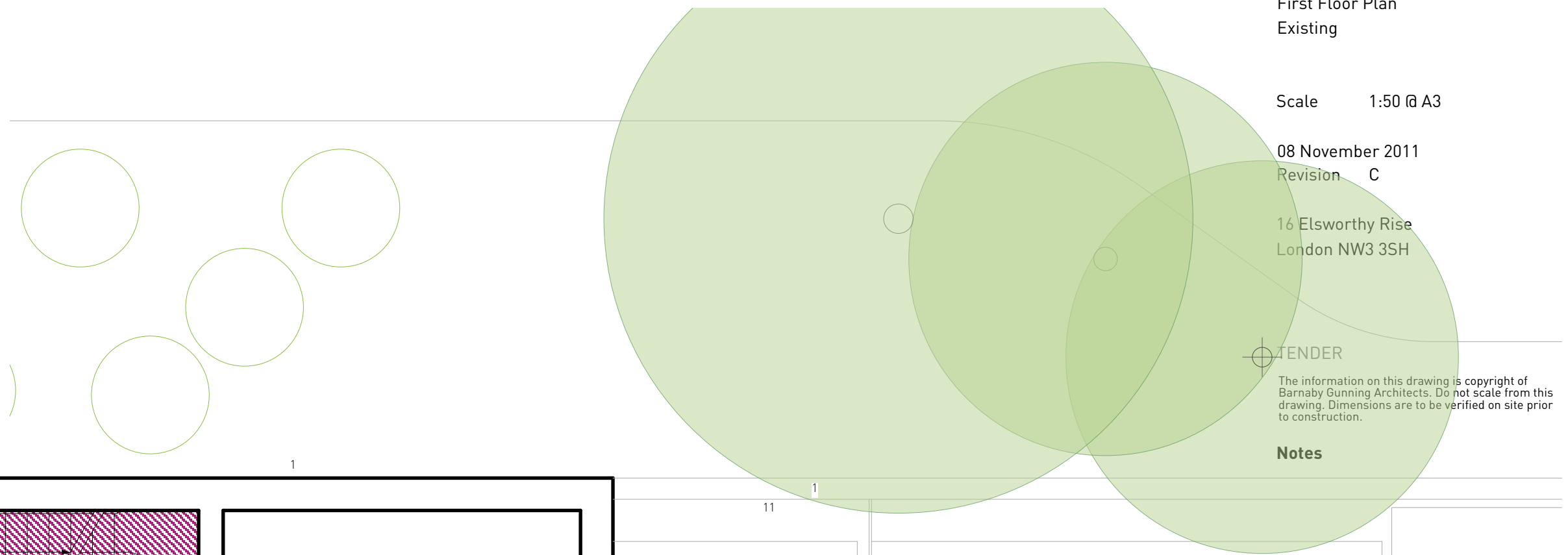
TENDER

The information on this drawing is copyright of Barnaby Gunning Architects. Do not scale from this drawing. Dimensions are to be verified on site prior to construction.

Notes

key

- 1 facing brickwork
- 2 painted timber clapboarding [white]
- 3 rendered masonry
- 4 uPVC window
- 5 painted timber door
- 6 painted timber fascia [white]
- 7 painted steel balustrade [black]
- 8 aluminium coping
- 9 powder coated aluminium glazed doors
- 10 timber overlap fencing panel
- 11 timber trellis
- 12 pea shingle
- 13 concrete paving
- 14 facing brickwork to match existing
- 15 powder coated steel picture window with opaque glazing
- 16 powder coated aluminium folding sliding door [grey]
- 17 painted steelwork [grey]
- 18 fritted spandrel glass [dark green]
- 19 stone paving
- 20 extensive green roof



Demolitions marked in red

1 2 3m

Barnaby Gunning Architects

63 Loudoun Rd, London NW8 0DQ  
 Via Bellezza 7, 20136, Milano  
 +[44] 20 73 72 24 24  
 www.barnabygunning.com

226\_G\_012

Second Floor Plan  
Existing

Scale 1:50 @ A3

08 November 2011  
Revision A

16 Elsworthy Rise  
London NW3 3SH

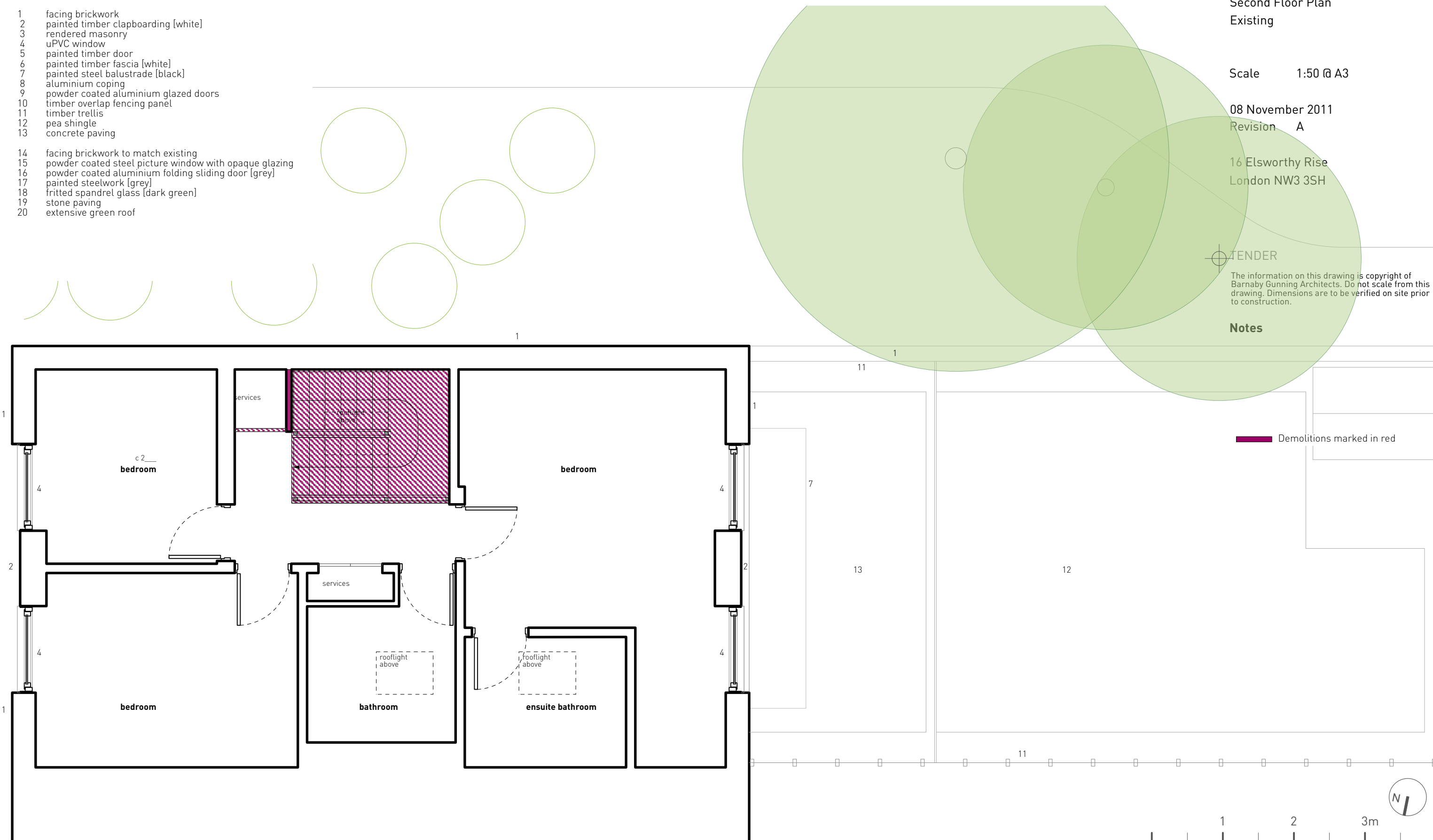
TENDER

The information on this drawing is copyright of Barnaby Gunning Architects. Do not scale from this drawing. Dimensions are to be verified on site prior to construction.

Notes

key

- 1 facing brickwork
- 2 painted timber clapboarding [white]
- 3 rendered masonry
- 4 uPVC window
- 5 painted timber door
- 6 painted timber fascia [white]
- 7 painted steel balustrade [black]
- 8 aluminium coping
- 9 powder coated aluminium glazed doors
- 10 timber overlap fencing panel
- 11 timber trellis
- 12 pea shingle
- 13 concrete paving
- 14 facing brickwork to match existing
- 15 powder coated steel picture window with opaque glazing
- 16 powder coated aluminium folding sliding door [grey]
- 17 painted steelwork [grey]
- 18 fritted spandrel glass [dark green]
- 19 stone paving
- 20 extensive green roof



Demolitions marked in red

Barnaby Gunning Architects

63 Loudoun Rd, London NW8 0DQ  
 Via Bellezza 7, 20136, Milano  
 +[44] 20 73 72 24 24  
 www.barnabygunning.com

**materials key**

- 1 facing brickwork
- 2 painted timber clapboarding [white]
- 3 rendered masonry
- 4 uPVC window
- 5 painted door
- 6 painted timber fascia [white]
- 7 painted steel balustrade [black]
- 8 aluminium coping
- 9 powder coated aluminium glazed doors
- 10 timber overlap fencing panel
- 11 timber trellis
- 12 pea shingle
- 13 concrete paving

- 14 facing brickwork to match existing
- 15 powder coated steel picture window with opaque glazing
- 16 powder coated aluminium folding sliding door [grey]
- 17 painted steelwork [grey]
- 18 fritted spandrel glass [dark green]
- 19 stone paving
- 20 extensive green roof

226\_G\_014

Existing Front Elevation

Scale: 1:50 @ A3

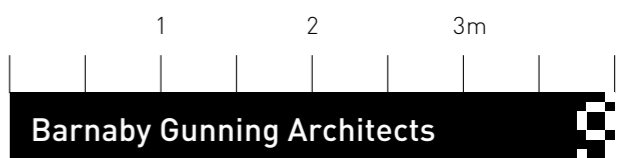
8 August 2011  
Revision: A

16 Elsworthy Rise  
London NW3 3SH

PLANNING

The information on this drawing is copyright of Barnaby Gunning Architects.  
Do not scale from this drawing.  
Dimensions are to be verified on site prior to construction.

**Notes**



Barnaby Gunning Architects  
63 Loudoun Road, London NW8 0DQ, UK  
via Bellezza 7, 20136 Milano, Italy  
+[44] 20 73 72 24 24  
www.barnabygunning.com

**materials key**

- 1 facing brickwork
- 2 painted timber clapboarding [white]
- 3 rendered masonry
- 4 uPVC window
- 5 painted door
- 6 painted timber fascia [white]
- 7 painted steel balustrade [black]
- 8 aluminium coping
- 9 powder coated aluminium glazed doors
- 10 timber overlap fencing panel
- 11 timber trellis
- 12 pea shingle
- 13 concrete paving

- 14 facing brickwork to match existing
- 15 powder coated steel picture window with opaque glazing
- 16 powder coated aluminium folding sliding door [grey]
- 17 painted steelwork [grey]
- 18 fritted spandrel glass [dark green]
- 19 stone paving
- 20 extensive green roof



226\_G\_015

Existing Rear Elevation

Scale: 1:50 @ A3

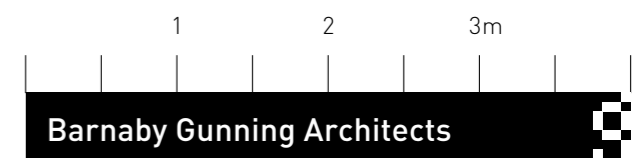
8 August 2011  
Revision: A

16 Elsworthy Rise  
London NW3 3SH

**PLANNING**

The information on this drawing is copyright of Barnaby Gunning Architects.  
Do not scale from this drawing.  
Dimensions are to be verified on site prior to construction.

**Notes**



63 Loudoun Road, London NW8 0DQ, UK  
via Bellezza 7, 20136 Milano, Italy  
+[44] 20 73 72 24 24  
www.barnabygunning.com

**materials key**

- 1 facing brickwork
- 2 painted timber clapboarding [white]
- 3 rendered masonry
- 4 uPVC window
- 5 painted door
- 6 painted timber fascia [white]
- 7 painted steel balustrade [black]
- 8 aluminium coping
- 9 powder coated aluminium glazed doors
- 10 timber overlap fencing panel
- 11 timber trellis
- 12 pea shingle
- 13 concrete paving
  
- 14 facing brickwork to match existing
- 15 powder coated steel picture window with opaque glazing
- 16 powder coated aluminium folding sliding door [grey]
- 17 painted steelwork [grey]
- 18 fritted spandrel glass [dark green]
- 19 stone paving
- 20 extensive green roof

226\_G\_016

Existing Side [South] Elevation

Scale: 1:50 @ A3

8 August 2011  
Revision: A

16 Elsworthy Rise  
London NW3 3SH

**PLANNING**

The information on this drawing is copyright of Barnaby Gunning Architects.  
Do not scale from this drawing.  
Dimensions are to be verified on site prior to construction.

**Notes**



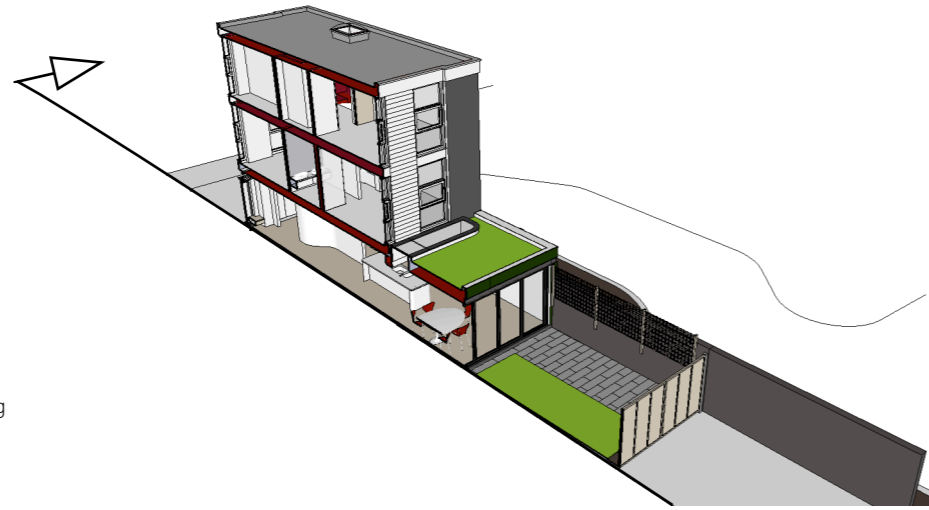
**Barnaby Gunning Architects**



63 Loudoun Road, London NW8 0DQ, UK  
via Bellezza 7, 20136 Milano, Italy  
+[44] 20 73 72 24 24  
www.barnabygunning.com

**materials key**

- 1 facing brickwork
- 2 painted timber clapboarding [white]
- 3 rendered masonry
- 4 uPVC window
- 5 painted door
- 6 painted timber fascia [white]
- 7 painted steel balustrade [black]
- 8 aluminium coping
- 9 powder coated aluminium glazed doors
- 10 timber overlap fencing panel
- 11 timber trellis
- 12 pea shingle
- 13 concrete paving
  
- 14 facing brickwork to match existing
- 15 powder coated steel picture window with opaque glazing
- 16 powder coated aluminium folding sliding door [grey]
- 17 painted steelwork [grey]
- 18 fritted spandrel glass [dark green]
- 19 stone paving
- 20 extensive green roof



226\_G\_017

Existing Section AA

Scale: 1:50 @ A3

8 August 2011  
Revision: A

16 Elsworth Rise  
London NW3 3SH

**PLANNING**

The information on this drawing is copyright of Barnaby Gunning Architects.  
Do not scale from this drawing.  
Dimensions are to be verified on site prior to construction.



1 2 3m

**Barnaby Gunning Architects** 

63 Loudoun Road, London NW8 0DQ, UK  
via Bellezza 7, 20136 Milano, Italy  
+[44] 20 73 72 24 24  
www.barnabygunning.com



The information on this drawing is copyright of Barnaby Gunning Architects. Do not scale from this drawing. Dimensions are to be verified on site prior to construction.

Notes

key

- 1 facing brickwork
- 2 painted timber clapboarding [white]
- 3 rendered masonry
- 4 uPVC window
- 5 painted timber door
- 6 painted timber fascia [white]
- 7 painted steel balustrade [black]
- 8 aluminium coping
- 9 powder coated aluminium glazed doors
- 10 timber overlap fencing panel
- 11 timber trellis
- 12 pea shingle
- 13 concrete paving
- 14 facing brickwork to match existing
- 15 powder coated steel picture window with opaque glazing
- 16 powder coated aluminium folding sliding door [grey]
- 17 painted steelwork [grey]
- 18 fritted spandrel glass [dark green]
- 19 stone paving
- 20 extensive green roof

