

226\_V\_120

Ground Floor Proposed  
Cutaway Plan

Scale: NTS @ A3

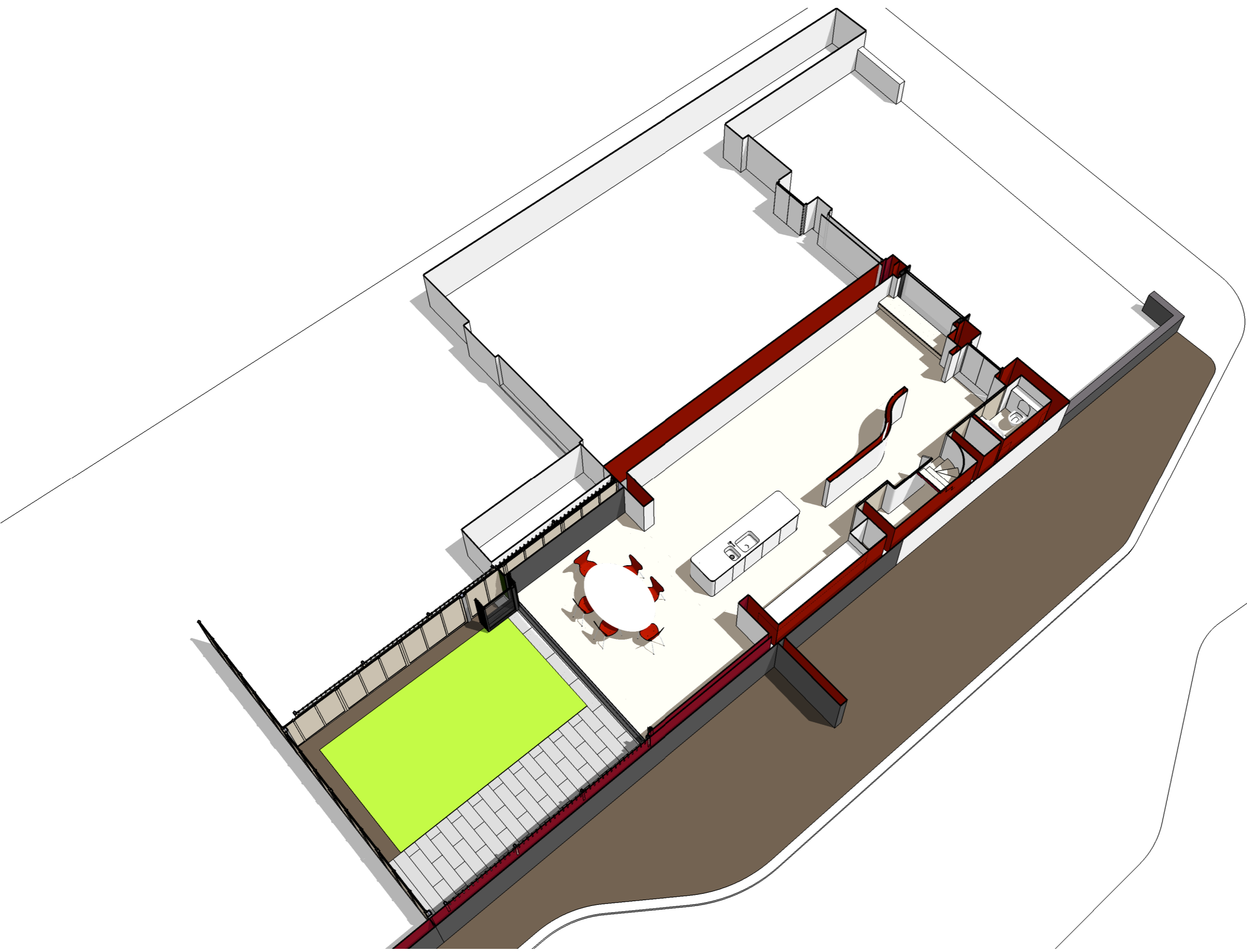
8 August 2011  
Revision: A

16 Elsworthy Rise  
London NW3 3SH

### PLANNING

The information on this drawing is copyright of Barnaby Gunning Architects.  
Do not scale from this drawing.  
Dimensions are to be verified on site prior to construction.

### Notes



226\_V\_121

First Floor Proposed  
Cutaway Plan

Scale: NTS @ A3

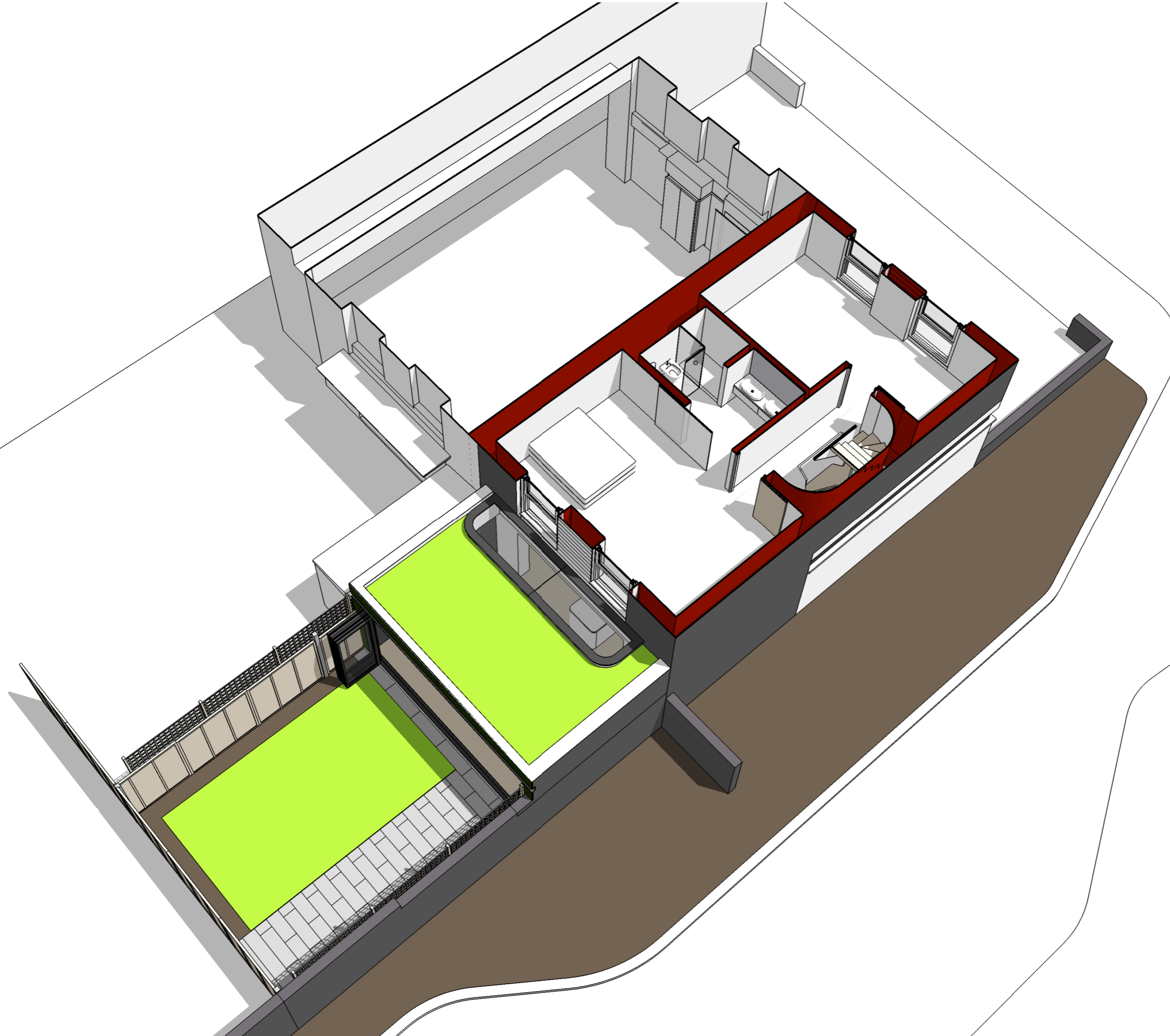
8 August 2011  
Revision: A

16 Elsworthy Rise  
London NW3 3SH

PLANNING

The information on this drawing is copyright of Barnaby Gunning Architects.  
Do not scale from this drawing.  
Dimensions are to be verified on site prior to construction.

Notes



Barnaby Gunning Architects



63 Loudoun Road, London NW8 0DQ, UK  
via Bellezza 7, 20136 Milano, Italy  
+[44] 20 73 72 24 24  
[www.barnabygunning.com](http://www.barnabygunning.com)

**materials key**

- 1 facing brickwork
- 2 painted timber clapboarding [white]
- 3 rendered masonry
- 4 uPVC window
- 5 painted door
- 6 painted timber fascia [white]
- 7 painted steel balustrade [black]
- 8 aluminium coping
- 9 powder coated aluminium glazed doors
- 10 timber overlap fencing panel
- 11 timber trellis
- 12 pea shingle
- 13 concrete paving
  
- 14 facing brickwork to match existing
- 15 powder coated steel picture window with opaque glazing
- 16 powder coated aluminium folding sliding door [grey]
- 17 painted steelwork [grey]
- 18 fritted spandrel glass [dark green]
- 19 stone paving
- 20 extensive green roof



226\_V\_125

Proposed Front View  
Perspective

Scale: NTS @ A3

08 August 2011  
Revision: A

16 Elsworthy Rise  
London NW3 3SH

**PLANNING**

The information on this drawing is copyright of Barnaby Gunning Architects.  
Do not scale from this drawing.  
Dimensions are to be verified on site prior to construction.

**Notes**

**Barnaby Gunning Architects**



63 Loudoun Road, London NW8 0DQ, UK  
via Bellezza 7, 20136 Milano, Italy  
+[44] 20 73 72 24 24  
www.barnabygunning.com



226\_V\_126

Proposed Rear View  
Perspective

Scale: NTS @ A3

08 August 2011  
Revision: A

16 Elsworthy Rise  
London NW3 3SH

## PLANNING

The information on this drawing is copyright of Barnaby Gunning Architects.  
Do not scale from this drawing.  
Dimensions are to be verified on site prior to construction.

## Notes

### materials key

- 1 facing brickwork
- 2 painted timber clapboarding [white]
- 3 rendered masonry
- 4 uPVC window
- 5 painted door
- 6 painted timber fascia [white]
- 7 painted steel balustrade [black]
- 8 aluminium coping
- 9 powder coated aluminium glazed doors
- 10 timber overlap fencing panel
- 11 timber trellis
- 12 pea shingle
- 13 concrete paving
  
- 14 facing brickwork to match existing
- 15 powder coated steel picture window with opaque glazing
- 16 powder coated aluminium folding sliding door [grey]
- 17 painted steelwork [grey]
- 18 fritted spandrel glass [dark green]
- 19 stone paving
- 20 extensive green roof



Barnaby Gunning Architects



63 Loudoun Road, London NW8 0DQ, UK  
via Bellezza 7, 20136 Milano, Italy  
+[44] 20 73 72 24 24  
www.barnabygunning.com