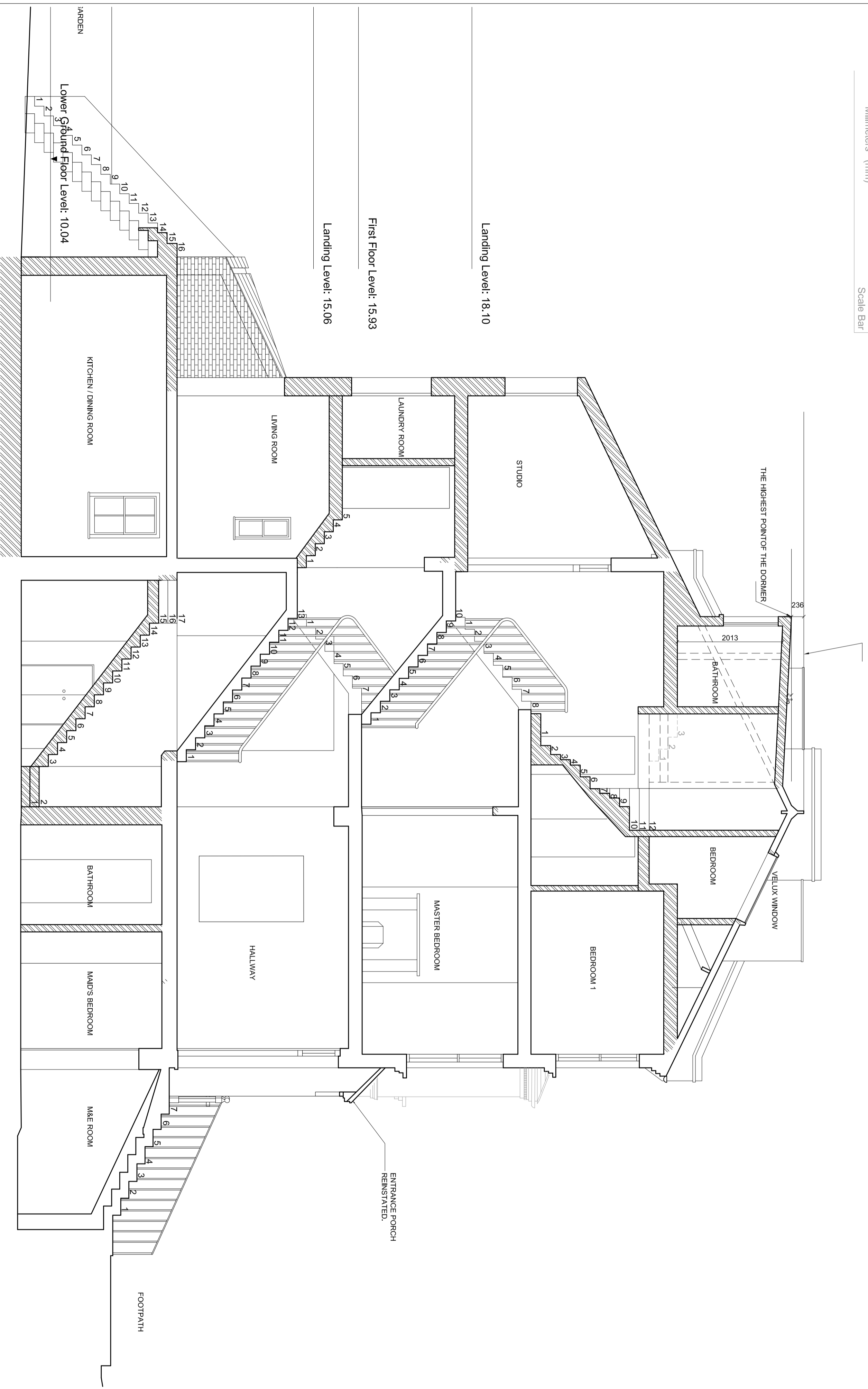
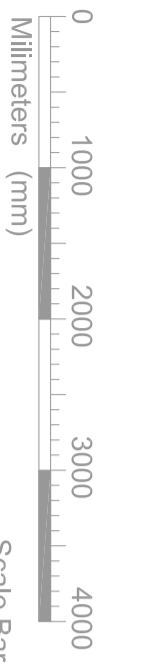


# Planning Issue

REVISIONS  
**18.05.30 REV A**  
 - REAR EXTENSION REVISED.  
 - WINDOWS TO CLOSET WING REVISED.  
 - DORMER WINDOWS REVISED.  
**18.07.31 REV B**  
 - DORMER WINDOWS REVISED.



NOTES

22 PILGRIMS LANE,  
 NW3 1SN  
 PROPOSED SECTION

DWG No: 22PL\_P301B  
 SCALE: 1:50 @ A2  
 DATE: JULY 2017

**halsize**  
 architects

48 PARKHILL ROAD, LONDON NW3 2YP  
 TEL: 020 7482 4420 - FAX: 020 7482 4186  
 MAIL@BELSIZEARCHITECTS.COM

© COPYRIGHT  
 NOT TO BE REPRODUCED OR USED  
 WITHOUT PERMISSION