

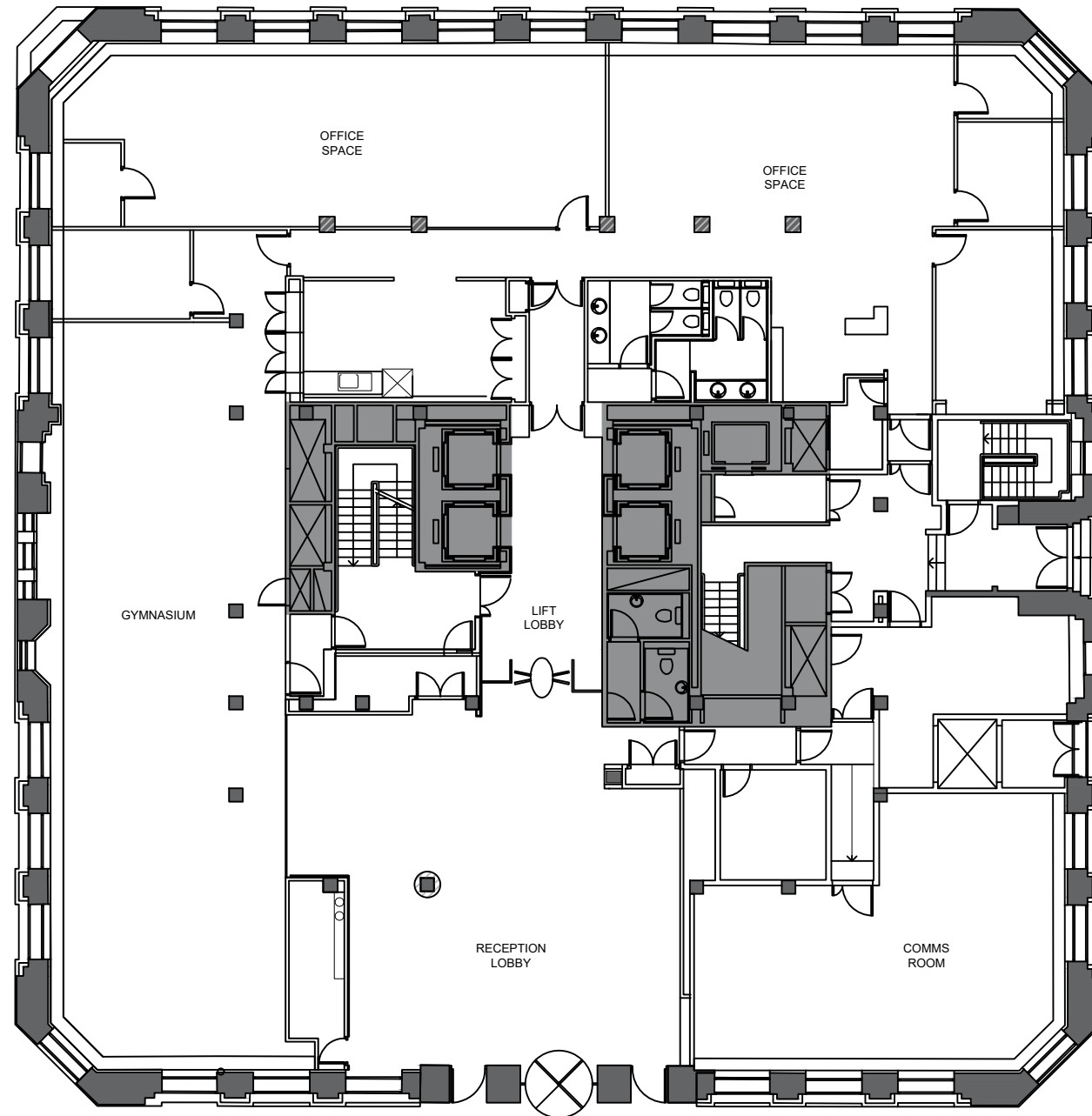
BARTER STREET

BLOOMSBURY PLACE

BARTER STREET

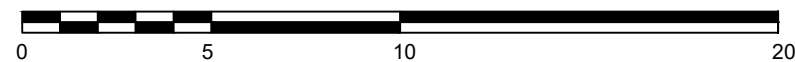
BURY PLACE

TOTAL FLOOR AREA - 792 Sq/m



01 EXISTING GROUND FLOOR GA
SCALE 1:200@A3

Scale 1:200



	PROJECT TITLE Labs House						
	DRAWING TITLE Labs House_Existing Ground Floor GA						
	DWG STATUS PLANNING						
	DRAWN	MS	FILE	649	DATE	16.07.18	REVISION
CHECKED	TM	JOB NO.	649	SCALE	1:200@A3	DWG NO.	649_PL_G01