

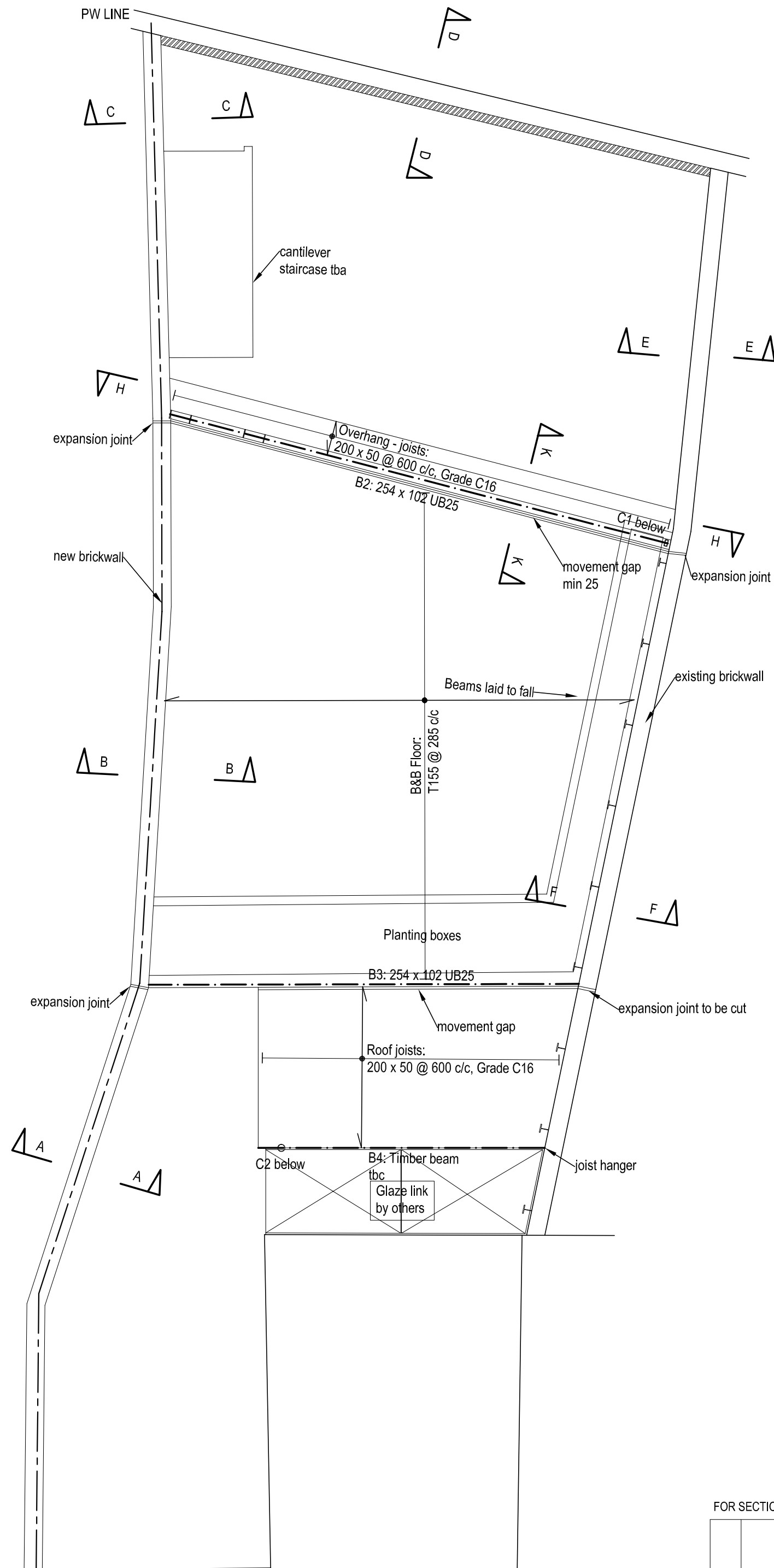
- GENERAL NOTES FOR CONSTRUCTION (for all drawings):**
1. Do not scale from drawings. All measurements to be checked on site.
  2. All timber to be C16 unless noted otherwise.
  3. All steel to be S275 unless noted otherwise. Ensure minimum bearing on masonry wall 100.
  4. All concrete to be grade C35 minimum
  5. Ensure minimum bearing of 150mm for new PCC lintels.
  6. All new internal partitions assumed to be stud walls
  7. All levels to be confirmed by Architect

- Structure below
- ..... Structure removed
- Beam
- Existing walls
- New walls
- Concrete

PLAN SECTION JJ  
AT No 8 GARDEN LEVEL  
(SEE SECTION F - F)

FOR SECTION 106

Revision	Date	Made by	Amendments
	23.1.2018	MG	
Scales		Job No.	Drawing No. Revision
1:50 @A3		17054	01



FOR SECTION 106

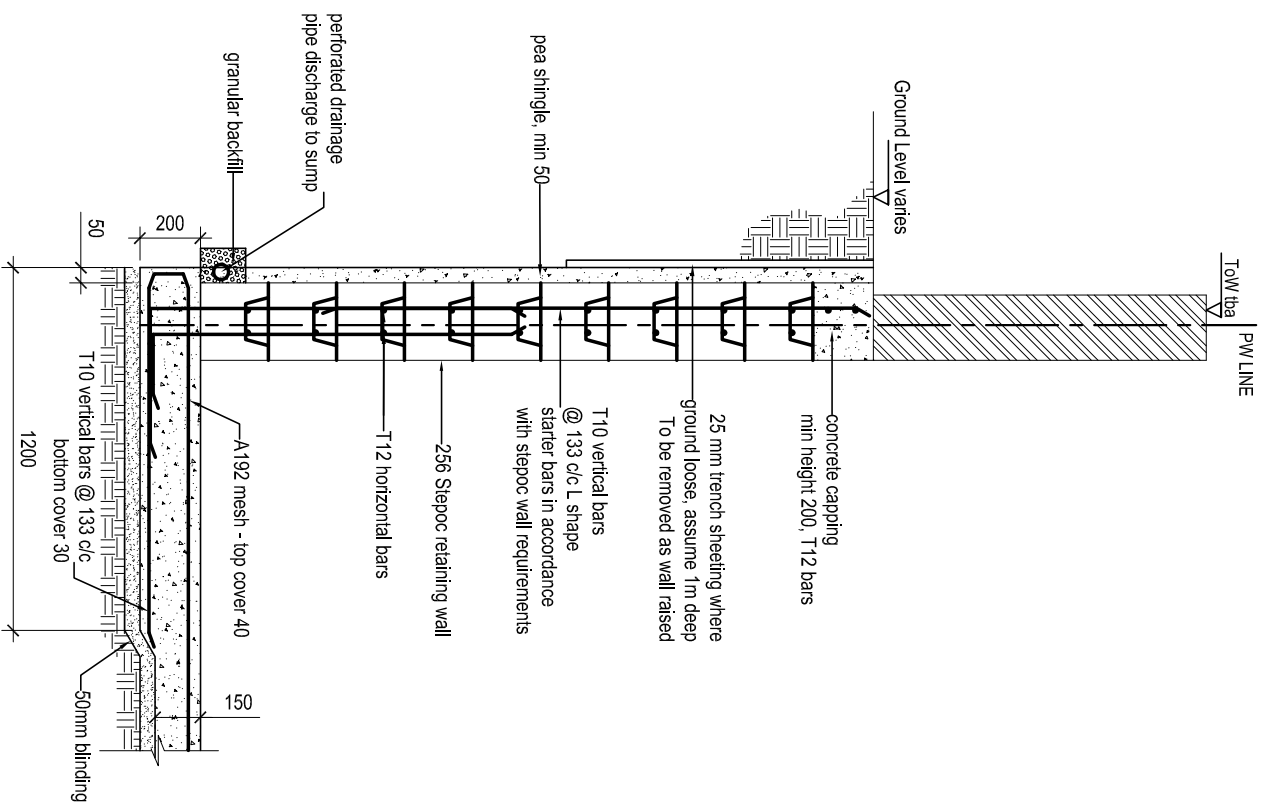
Revision	Date	Made by	Amendments
Date	5.1.2018	Drawn by	MG
Checked			
Scales	1:50 @A3	Job No.	17054
Drawing No.	02	Revision	

**Ecos Maclean Ltd**  
 Engineering - materials, energy, structure  
 8A Chamberlain Street London NW1 8XB Tel: 020 7722 7525 Fax: 020 7722 9711  
 www.ecosmaclean.co.uk - office@ecosmaclean.co.uk

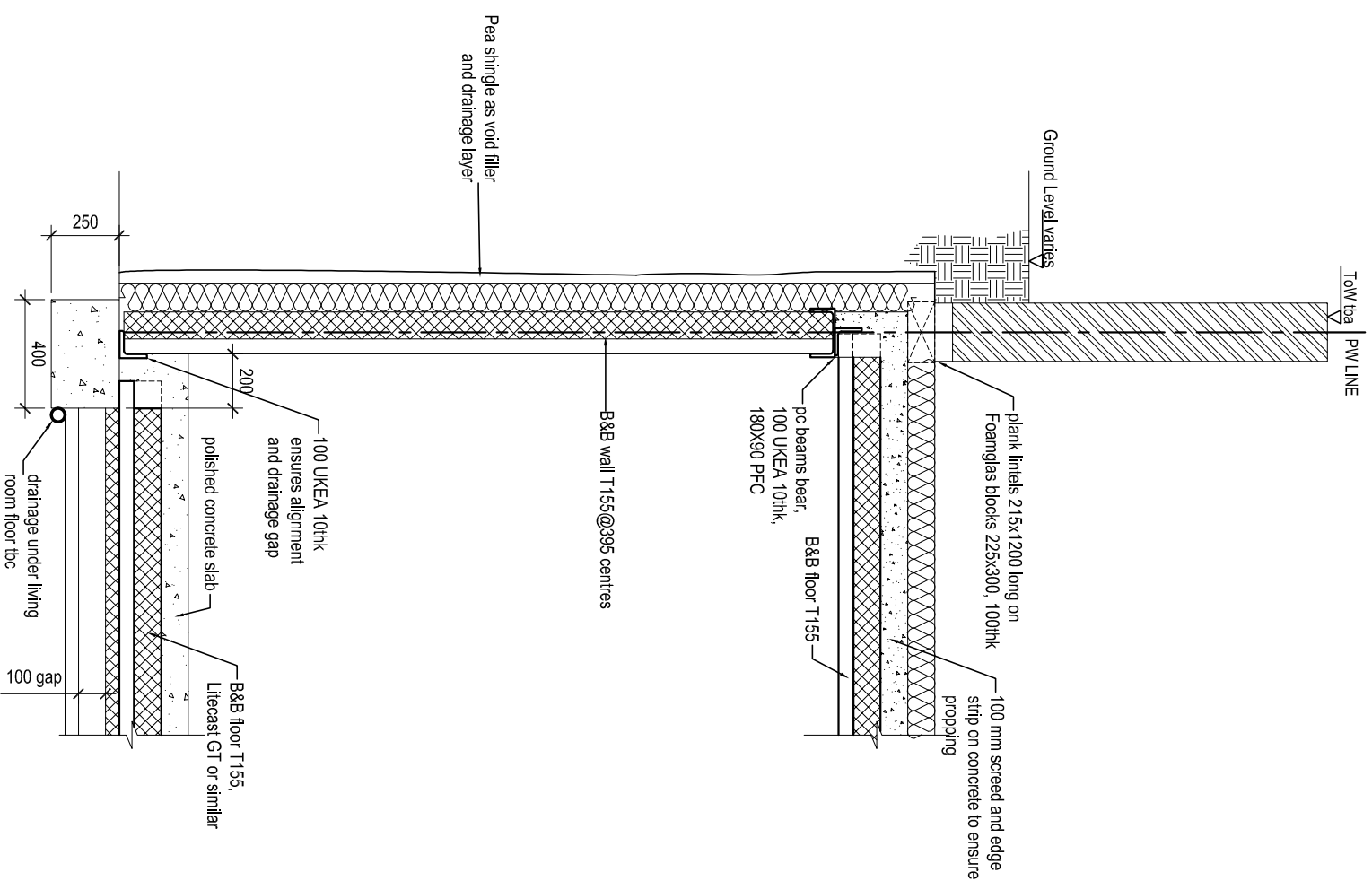
**Proposed  
 Ground Floor Plan**

**9 St George's Terrace  
 London NW1 9XH**

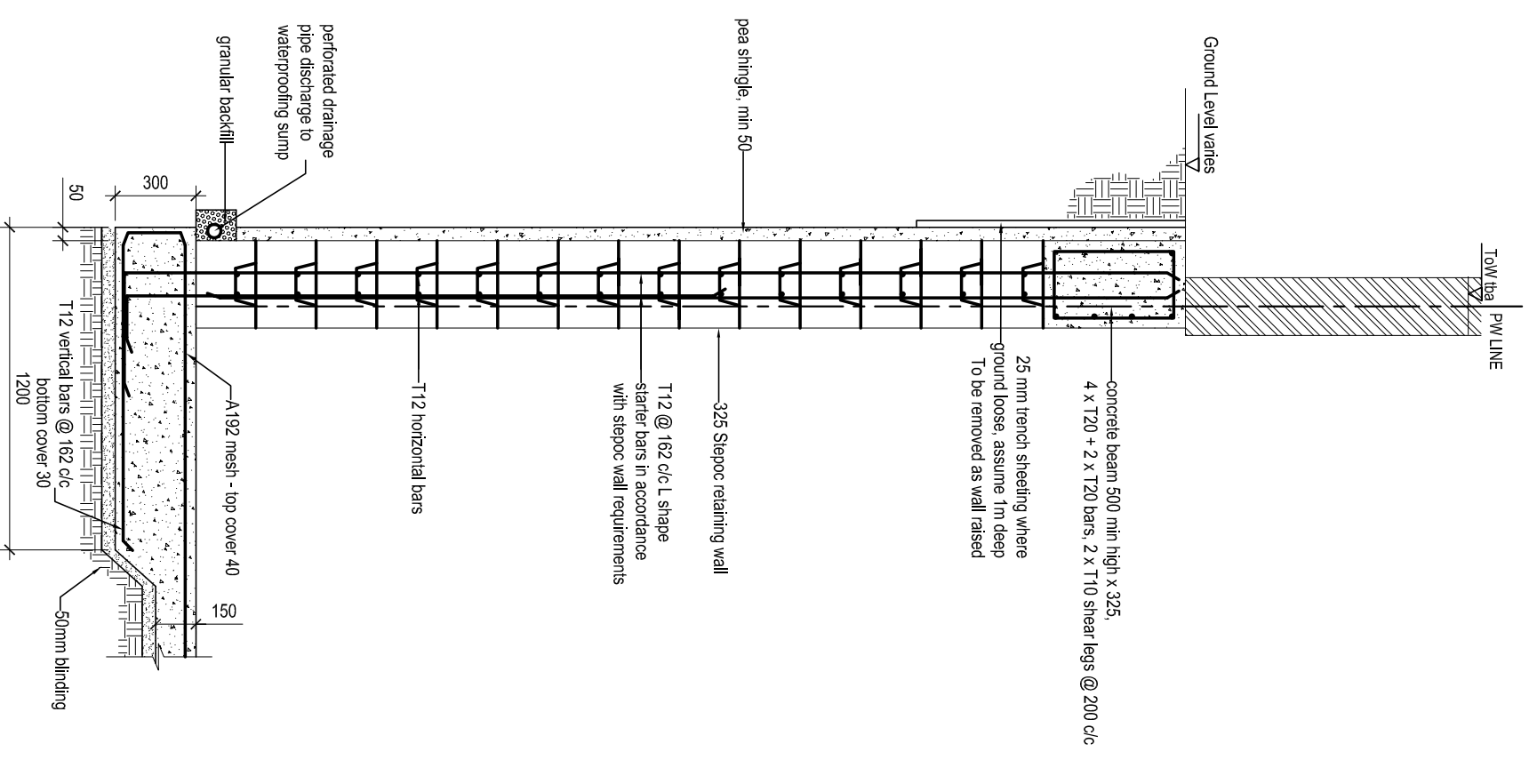
**Bob Taylor**



SECTION A - A



SECTION B - B



SECTION C - C

**Ecoss Maclean Ltd**  
Engineering - materials, energy, structure

84 Chamberlain Street - London NW1 8XS - Tel: 020 7722 7323 - Fax: 020 7722 9711  
WebSite: www.nkmaclean.co.uk - email: office@ecossmaclean.co.uk

**Bob Taylor**

**9 St Georges Terrace**  
London NW1 8XH

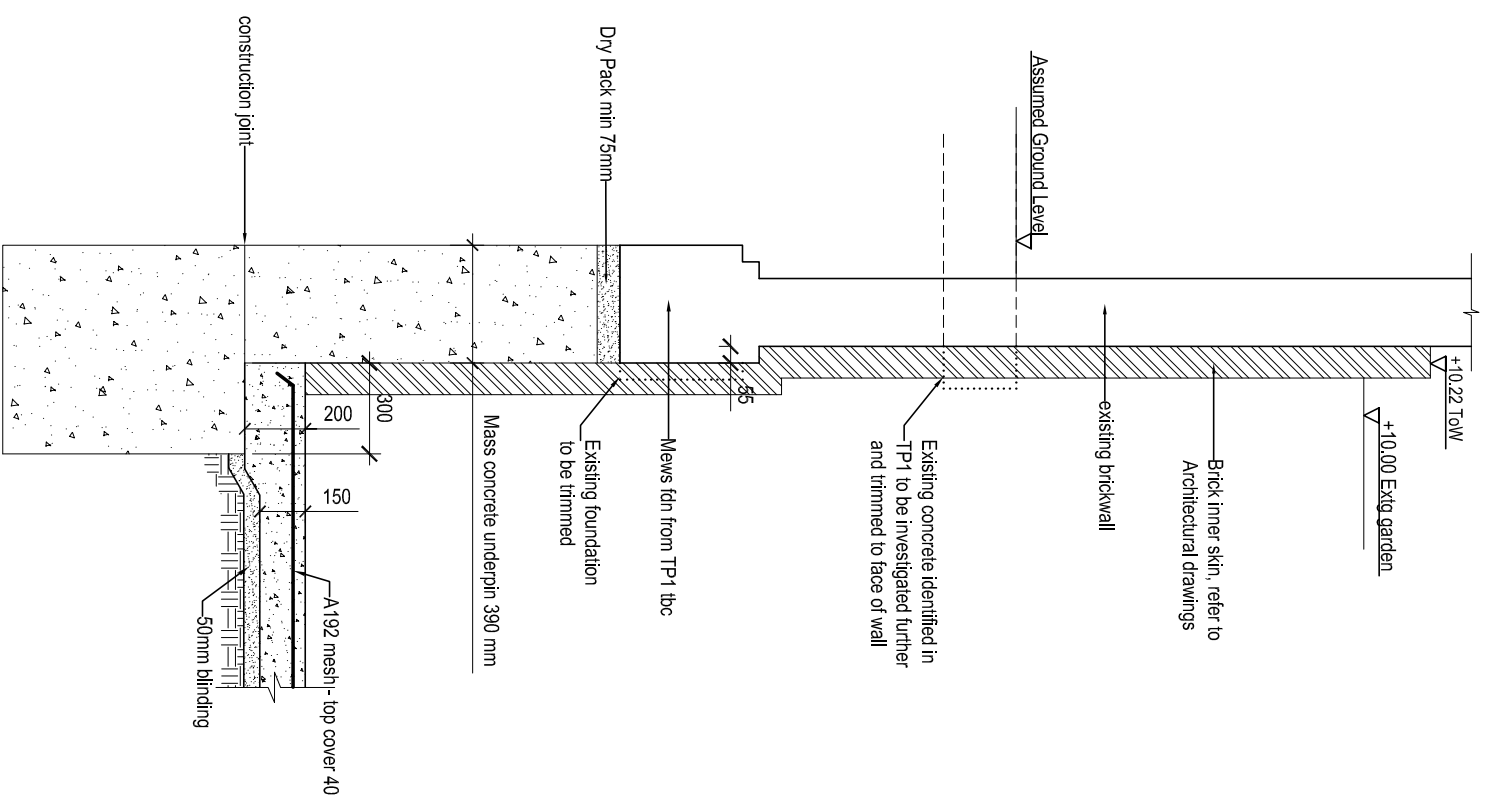
**Sections A-A, B-B, C-C**

Revision	Date	Made by	Amendments

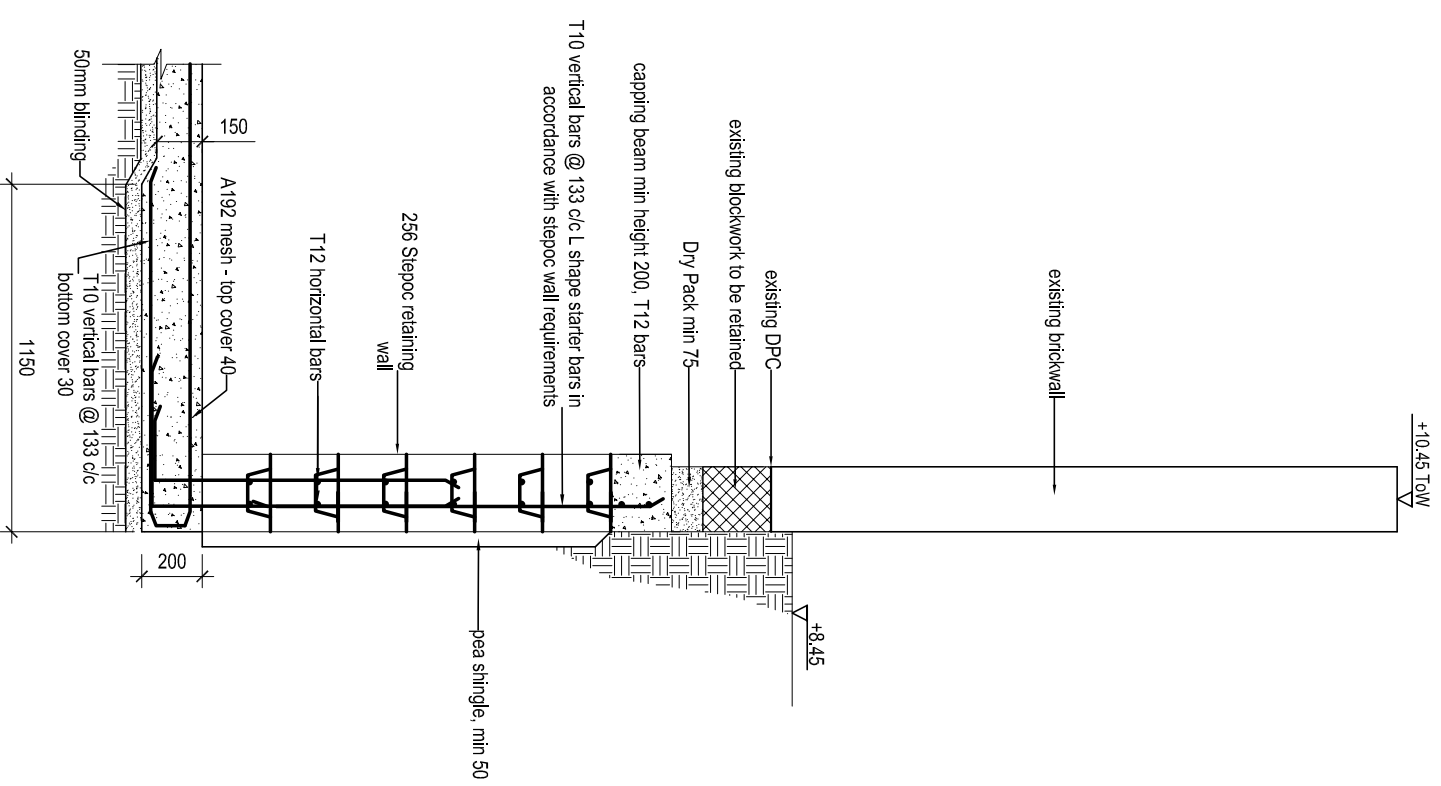
FOR SECTION 106

Date	Drawn by	Checked
25.1.2018	MG	
Scale	Job No.	Drawing No.
1:25 @ A3	17054	03
Revision		

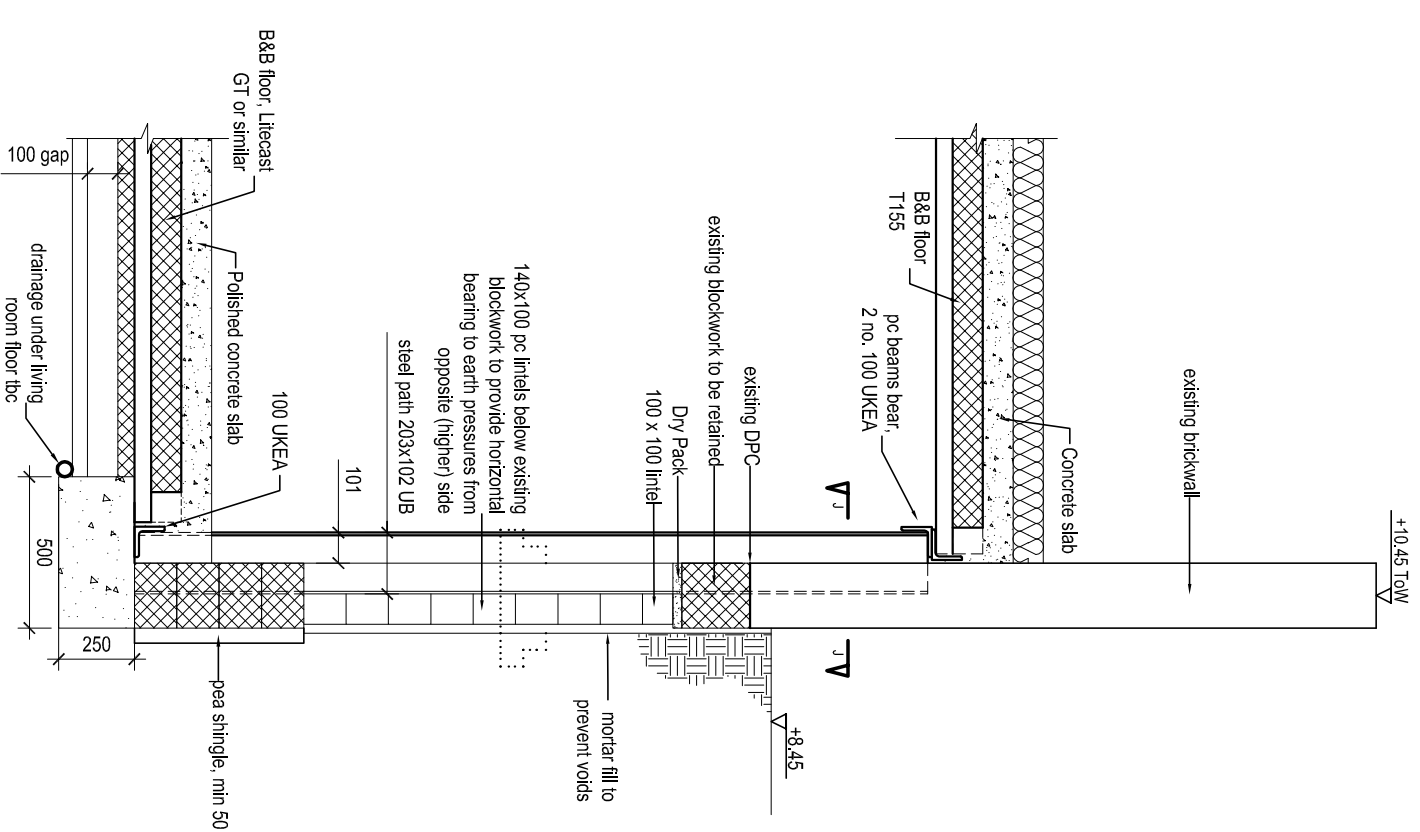
W:\S1\250520\03000\03000\Drawings\106\_250717\06\_9 St Georges Terrace, NW1\Drawings\Structural\17054\_9 SS  
Georges Terrace.dwg



SECTION D - D



SECTION E - E



SECTION F - F

**Ecoss Maclean Ltd**  
 Engineering - materials, energy, structure  
 8A Chamberlain Street - London NW1 8XS - Tel: 020 7722 7323 - Fax: 020 7722 9711  
 Web-Site: www.nkmaclean.co.uk - Email: office@ecossmaclean.co.uk

**Bob Taylor**

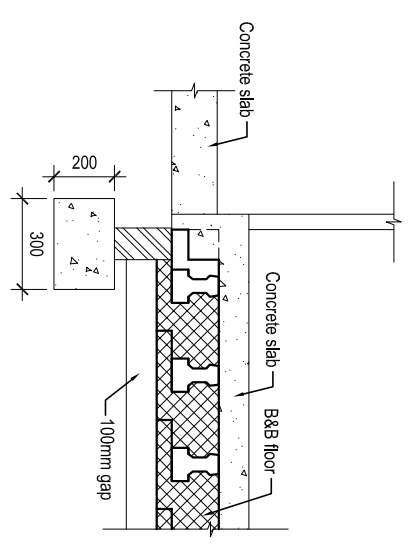
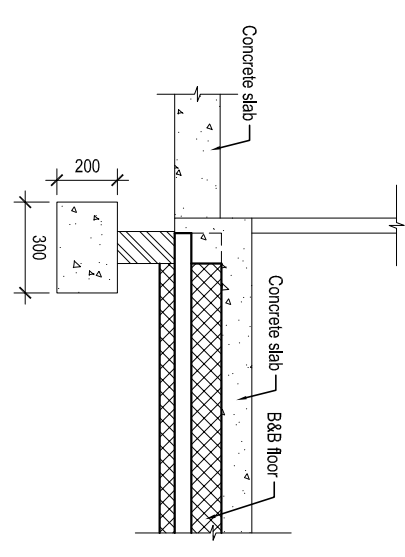
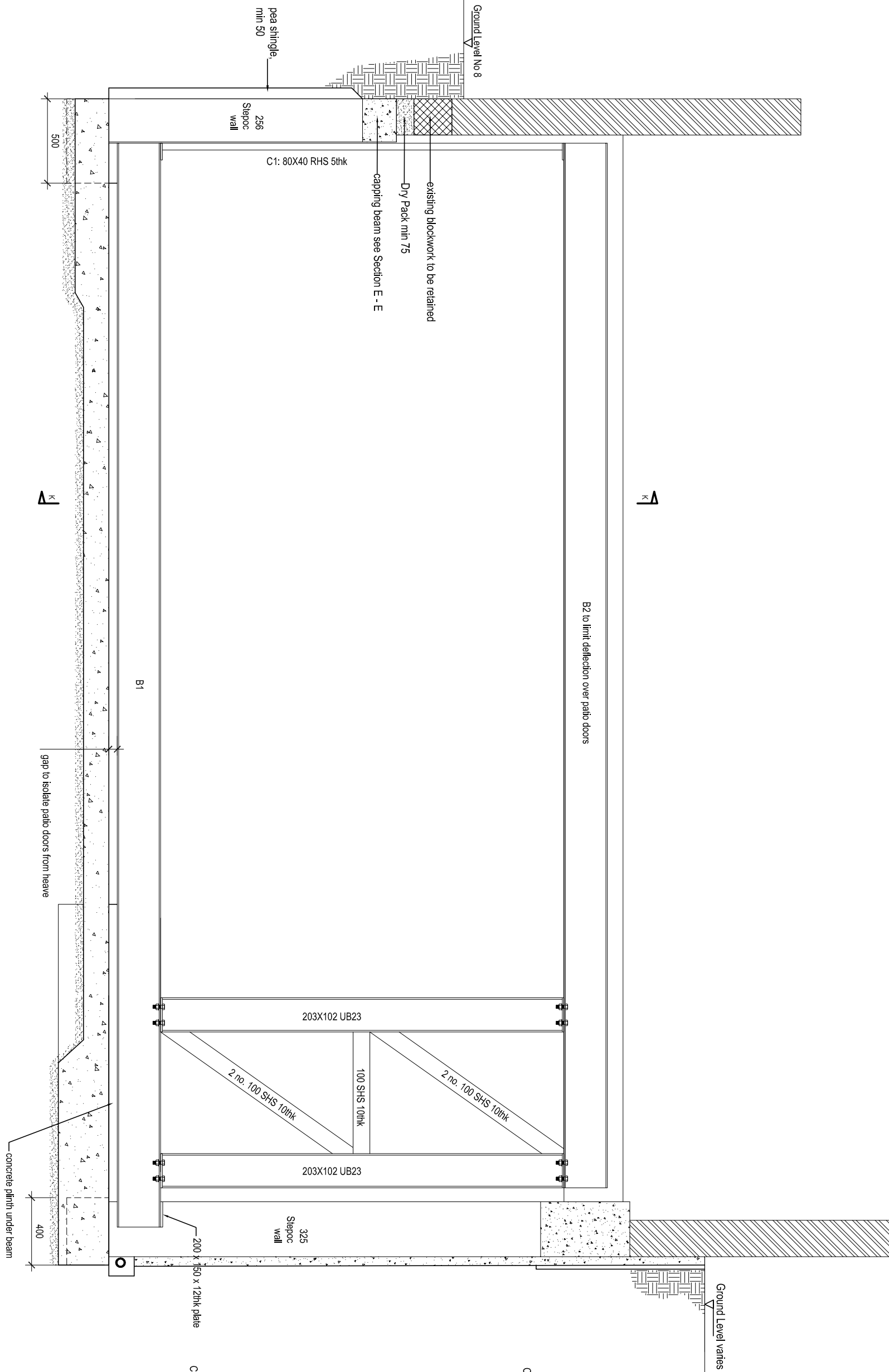
**9 St Georges Terrace**  
 London NW1 8XH

**Sections D-D, E-E, F-F**

Revision	01	18.06.18	MG	All structure aligned with face of PV
Date			Made by	Amendments

FOR SECTION 106				
Date	25.1.2018	Drawn by	MG	Checked
Scale	1:25 @ A3	Job No.	17054	Drawing No.
				Revision
				04
				01

W:\S1\9552\Drawings\Section\Drawings.dwg: 20/11/18 9 St Georges Terrace, NW1A DrawingStandard\17054 9 St Georges Terrace.dwg



SECTION H - H

SECTION 2 - 2

SECTION 1-1

Ecosp Macclean Ltd  
 Engineering - materials, energy, structure  
 84 Chamberlain Street - London NW1 8XB - tel: 020 7722 7323 - Fax: 020 7722 9711  
 WebSite: www.ecosmacclean.co.uk - email: office@ecosmacclean.co.uk

Bob Taylor

9 St Georges Terrace  
 London NW1 8XH

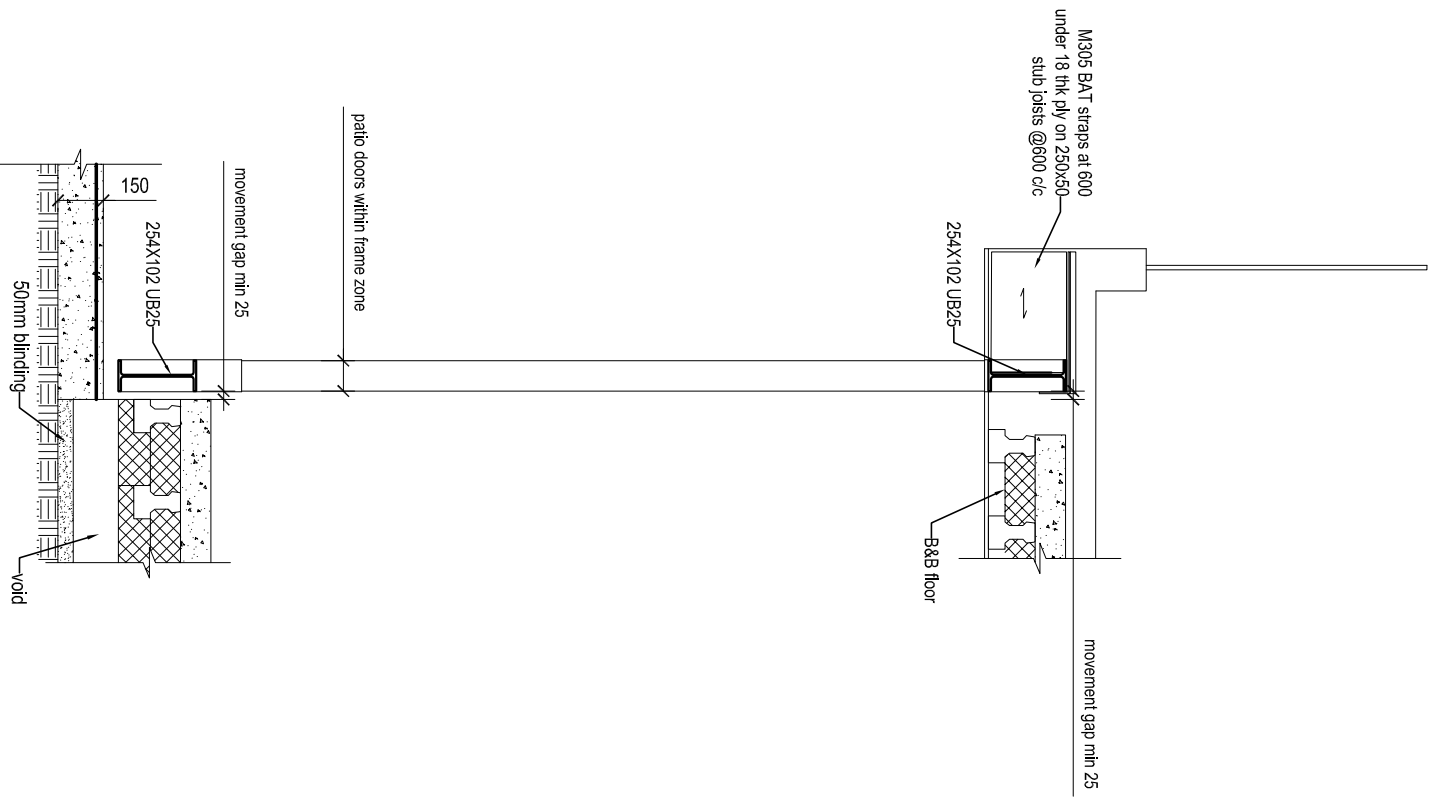
Sections H-H, 1-1, 2-2

Revision	Date	Made by	Amendments
01	18.06.18	MG	All structure aligned with face of PW. Information added on side 8

FOR SECTION 106

Date	21.3.2018	Drawn by	MG	Checked
Scale		Job No.	17054	Drawing No.
	1:25 @ A3			Revision
				05
				01

W:\3-13\210318\210318\_01.dwg 2017/10/19 9 St Georges Terrace, NW1 Chamberlain Street London W1  
 Georges Terrace.dwg



SECTION K - K

**Ecos Maclean Ltd**  
 Engineering - materials, energy, structure  
 84 Chamberlain Street - London NW1 8XG - tel: 020 772 7323 - Fax: 020 772 9711  
 Website: www.nkmaclean.co.uk - email: office@ecosmaclean.co.uk

**Bob Taylor**

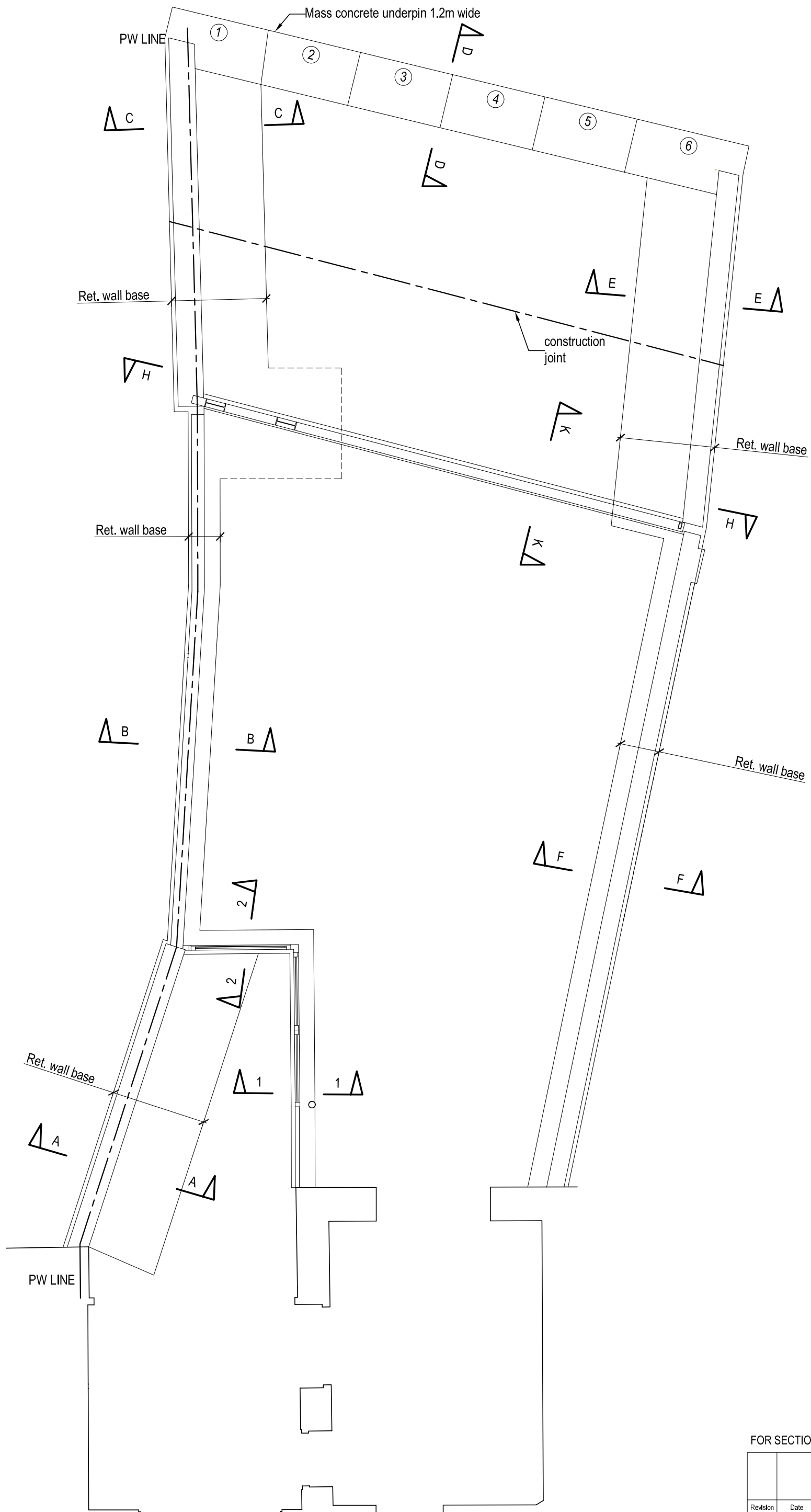
**9 St Georges Terrace**  
 London NW1 8XH

**Section KK**

Revision	Date	Made by	Amendments

FOR SECTION 106

Date	16.4.2018	Drawn by	MG	Checked	
Scales	1:25 @ A3	Job No.	17054	Drawing No.	06



FOR SECTION 106

Revision	Date	Made by	Amendments
	16.4.2018	MG	Checked
Scales		Job No.	Drawing No. Revision
1:50 @A3		17054	07

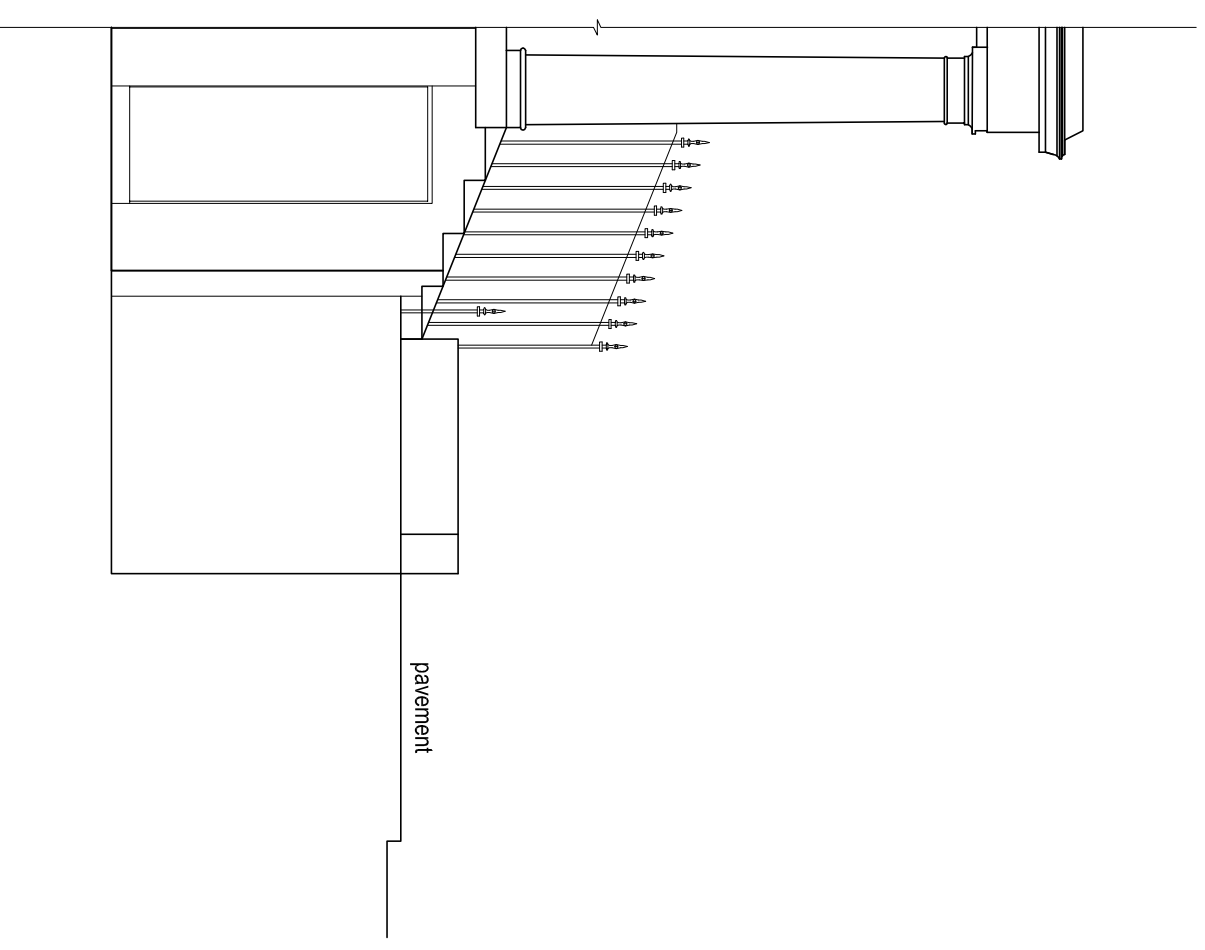
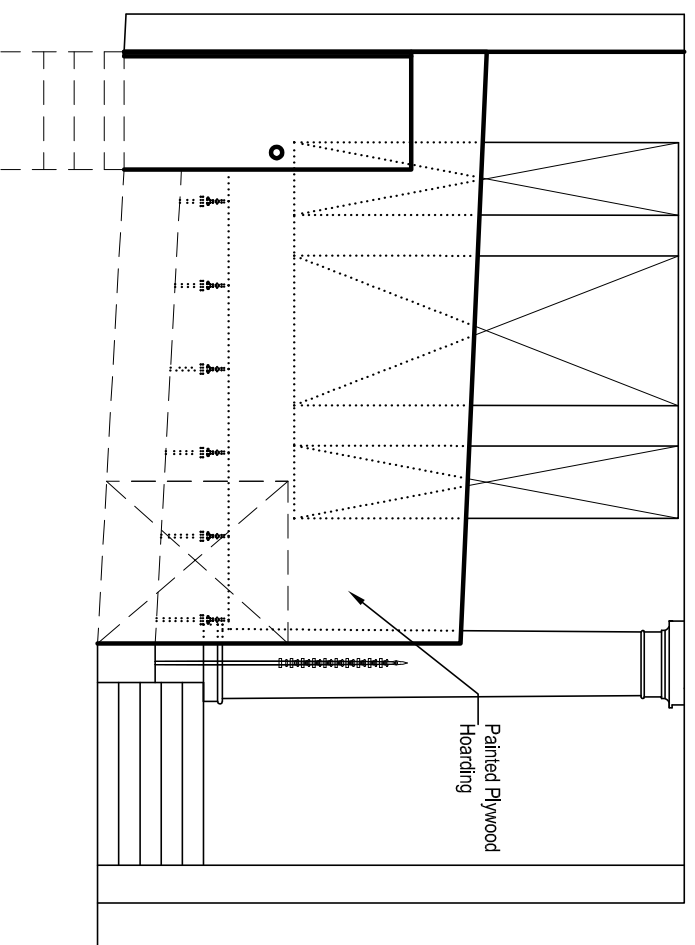
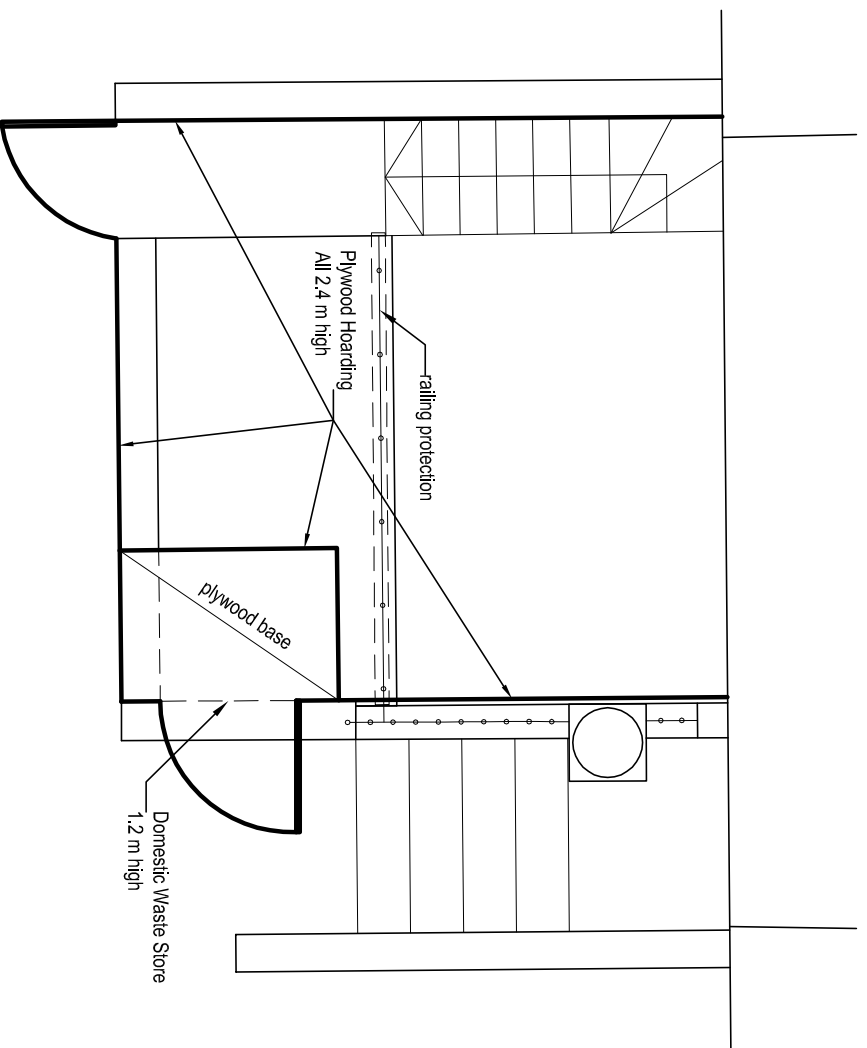
**Ecos Maclean Ltd**  
 Engineering - materials, energy, structure  
 8A Chamberlain Street London NW1 8XB Tel: 020 7722 7525 Fax: 020 7722 9711  
 www.ecosmaclean.co.uk - office@ecosmaclean.co.uk

**Proposed  
 Foundations Plan**

**9 St George's Terrace  
 London NW1 9XH**

**Bob Taylor**

\\WS-USER2\Dropbox\EcosMaclean\Jobs 2017\17054 9 St Georges Terrace, NW1A\Drawings\Structure\17054 9 St Georges Terrace.dwg



**Ecoss Maclean Ltd**  
Engineering - materials, energy, structure  
84 Chamberlain Street - London NW1 8XS - tel: 020 7722 7323 - Fax: 020 7722 9711  
WebSite: www.nkmaclean.co.uk - email: office@ecossmaclean.co.uk

**Bob Taylor**

**9 St Georges Terrace  
London NW1 8XH**

**Hoarding Plan & Elevation  
and Building Entrance**

Revision	Date	Made by	Front section added
01	20.06.18	MG	

**FOR SECTION 106**

Date	08.06.18	Drawn by	MG	Checked
Scales	1:50 @ A3	Job No.	17054	Drawing No.
				Revision
				08
				01

W:\S1\SE87\Drawings\2018\17054\_9 St Georges Terrace, NW1\Drawings\Section\17054 9 St Georges Terrace.dwg





FOR SECTION 106

Revision	Date	Made by	Amendments

**Bob Taylor**

**9 St. George's Terrace**

**Parking Bay Suspension  
& Vehicle Access**

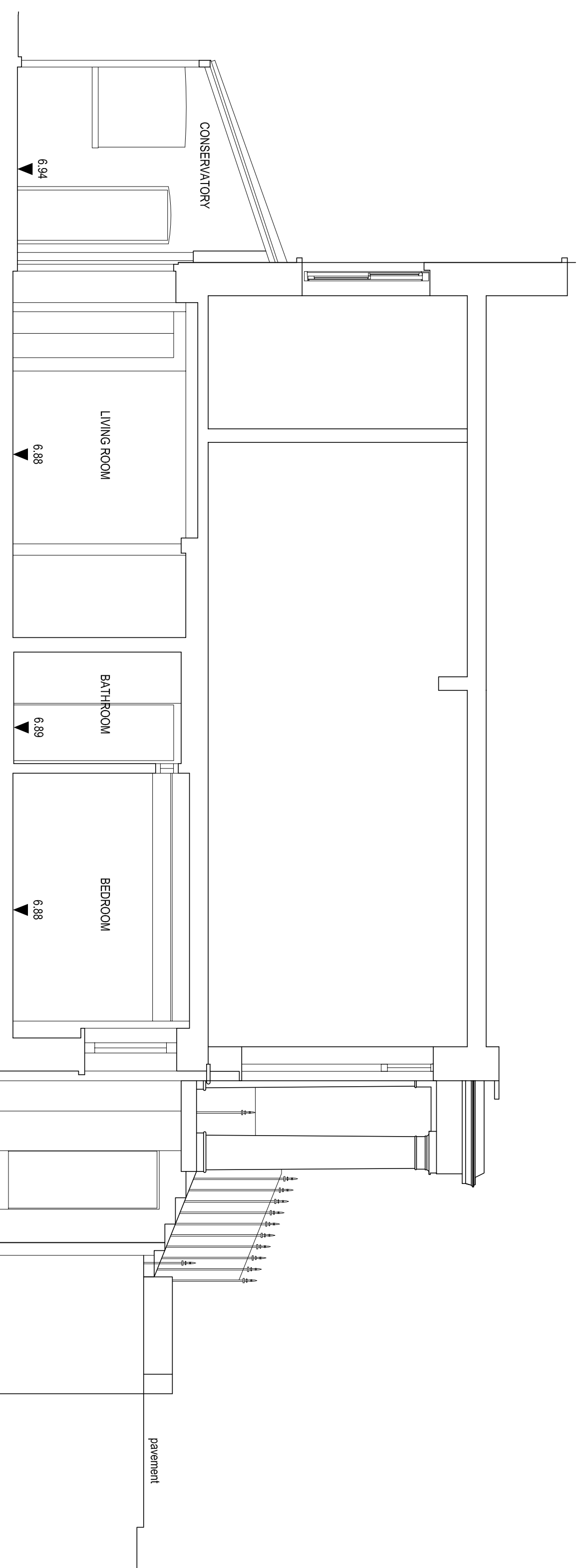
Date	08.06.2018	Drawn by	MG	Checked	
Scales	1:500 @A4	Job No.	17054	Drawing No.	09

**Ecos Maclean Ltd**

**Engineering - materials, energy, structure**

8A Chamberlain Street - London NW1 8XB - Tel: 020 7722 7525 - Fax: 020 7722 9711  
www.ecosmaclean.co.uk - office@ecosmaclean.co.uk

W:\SUS\2018\08\06\ECOS\Kiddier\Job: 201717254\_9 St Georges Terrace, NW1\A Drawing\Structural\77054\_9 St Georges Terrace.dwg



Datum Line 5.00m

5.00

**Ecos Maclean Ltd**  
 Engineering - materials, energy, structure  
 84 Chamberlain Street - London NW1 8XG - Tel: 020 7722 7929 - Fax: 020 7722 9711  
 WebSite: www.ecosmaclean.co.uk - email: office@ecosmaclean.co.uk

**Bob Taylor**

**9 St Georges Terrace**  
 London NW1 8XH

**Existing Cross Section**  
 with Levels

Revision	Date	Made by	Amendments

**FOR SECTION 106**

Date	08.06.18	Drawn by	M/G	Checked
Scale	1:50 @ A3	Job No.	17054	Drawing No.
				Revision
				10

W:\S1\2587\2587.dwg: 2017/06/18 9 St Georges Terrace, NW1 8XH Drawing: Section 106 9 St Georges Terrace.dwg