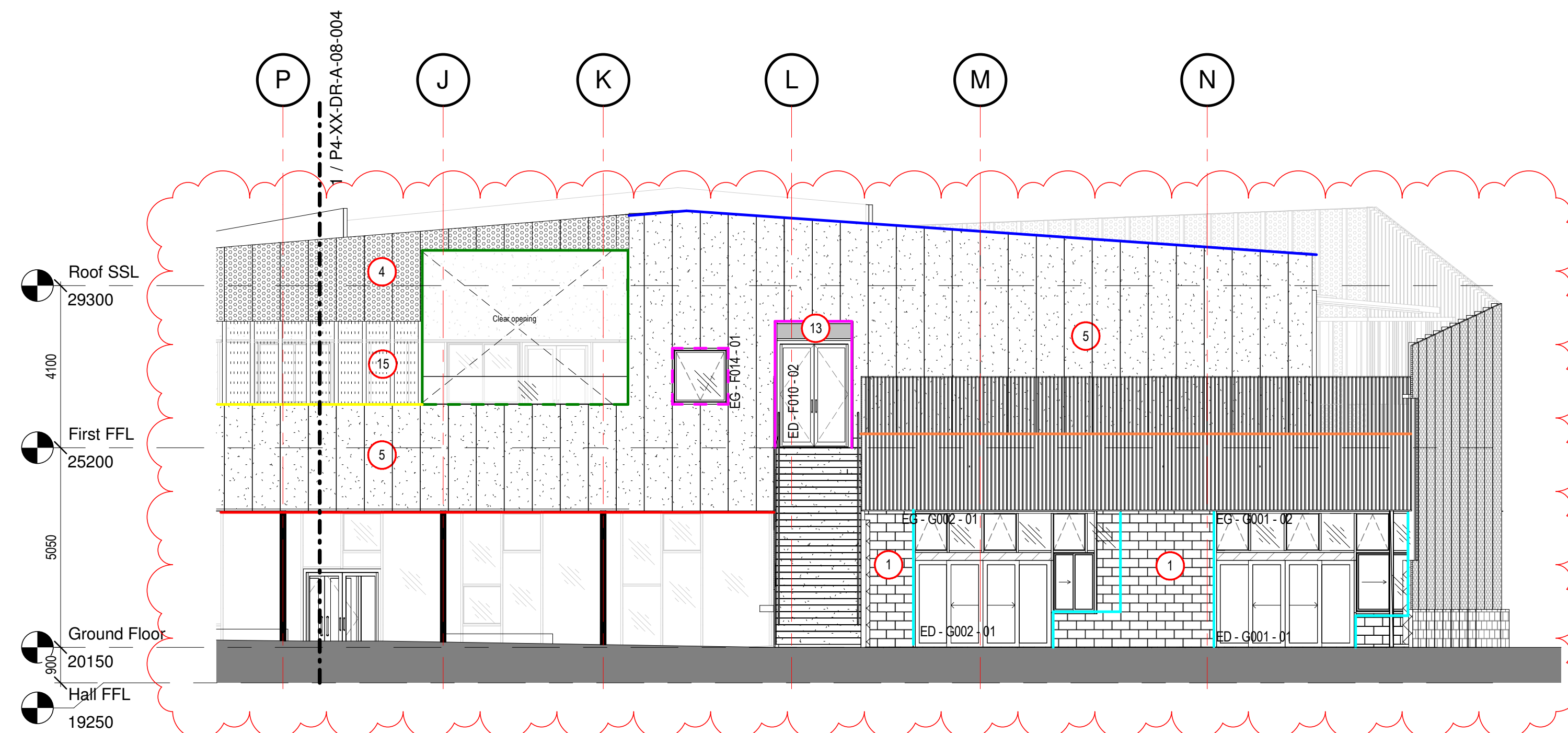


1 GA West Elevation
1 : 100



2 GA West Elevation - cont.
1 : 100

MATERIALS KEY

To be read in conjunction with drawings
A-08-001 - 063

- | | | |
|---|---|---|
| 1 Split-face Forticrete blockwork (440x215x95mm) | 7 Flat rainscreen cladding to Terrace Glazing Set-backs (Walls and Soffits) | 13 Opaque Glass (Back painted) |
| 2 Rainscreen Cladding: Profiled Perforate Aluminium (with cavity 'black out') | 8 Flat Panel Cladding To Low Level Areas Within Boundary Enclosure Facing External Terraces | 14 Perforated PPC aluminium screen (privacy, security & ventilation) |
| 4 Rainscreen Enclosure: Profiled Perforated Aluminium Screen | 9 Rendered blockwork | 15 Wire guarding within perimeter wall (Vertical & Horizontal) |
| 5 Through-colour insulated render. | 10 Vertical Timber Weatherboarding within blockwork | 16 Pre-cast concrete item |
| 6 Rainscreen Cladding: Terrace Edge Cladding (Below Balustrading) | 11 Paver upstand to FF terraces | 17 Rainscreen Cladding: Profiled Perforate Aluminium (with face painted blockwork behind) |
| | 12 Frosted Glass - Pattern and graduation tbc | 18 Forticrete block-slips |
| | | 19 Single ply membrane finish |

METAL PROFILES / TRIMS KEY

To be read in conjunction with drawings
A-08-001 - 063

- | | |
|---|--|
| — Metal profile - Forticrete & cladding junction | — Steel plate - Opening cills. Welded between RHS's to fall. Profile and fall to match yellow plate. |
| — Metal profile - Cladding & upstand junction | — Metal plate - Top of RHS's |
| — Metal profile - Parapet coping (FF roof) | — Metal plate - Capping to Forticrete blockwork |
| — Metal profile - Parapet coping (studio curtain wall) | — Metal trim - Cladding overhangs. Junction between render and flat cladding. |
| — Metal profile - Parapet coping (GF green roof) | — Metal trim - Windows within cladding |
| — Metal profile - Ventilated flashing | — Metal trim - windows within forticrete blockwork/render |
| — Steel plate - Welded between RHS's to fall | — Wire guarding within perimeter wall (Vertical and horizontal) |
| — Steel plate - Flat plates to opening jambs and head. Profile to match yellow plate. Concealed mechanical fixing to RHS. | |



9	Discharge Planning Condition 7.	MB	NF	25/05/18
8	Kitchen extract chimney added	ZC	MB	18/05/18
7	Structural elements added	ZC	MB	25/04/18
6	Wall type revised. Metal profiles and trims key added.	GD	MB	10/04/18
General revisions				
5	Revisions in line with VE51 & Hco comments	ZC	MB	19/01/18
4	Amendments per Hco Comments	ZC	MB	08/01/18
3	Amendments to allow CLT Coordination	ZC	MB	08/12/17
2	Amendments further to DLM 22/11/17. Door and window lags added. Issued for coordination	ZC	MB	01/12/17
1	Preliminary Issue	ZC	MB	17/11/17

rev	description	drawn	checked	date
revisions				

status: PRELIMINARY

This drawing is protected under The Copyright, Designs and Patents Act 1988. Do not scale. Figured dimensions only are to be taken from this drawing. All dimensions are to be checked on site before any work is put in hand. If in doubt, ASK.

P T A L

PETER TAYLOR ASSOCIATES LIMITED
7 OURZON STREET
MAYFAIR LONDON W1J 5HG
—
TELEPHONE + 44 (0)20 7495 3837
FACSIMILE + 44 (0)20 7493 3475
EMAIL MAYFAIR@PTAL.CO.UK
—
WWW.PTAL.CO.UK

client: Neilcott Construction Group
Excel House
Cray Avenue
Orpington
Kent
BR5 3ST



project: Central Somers Town
Plot 4

title: GA West Elevation

scale: 1 : 100 @ A1

date: 17/10/17

drawn: ZC

checked: MB

Project ID: 170025 Originator: PTA Drawing No: P4-XX-DR-A-08-004

revision: P 9