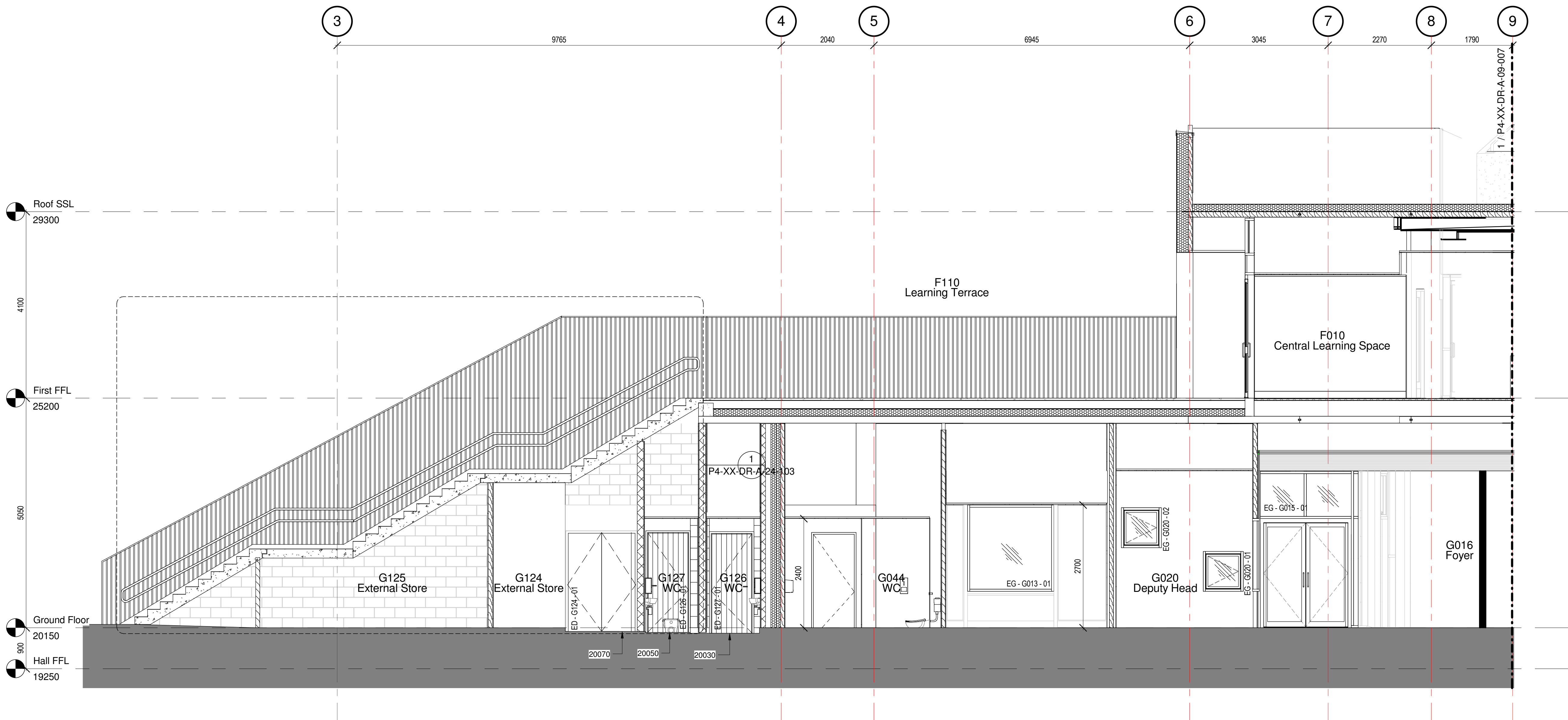


Note: Issued to all parties for coordination purposes



5	Discharge Planning Condition 7.	MB	NF	25/05/18
4	Wall type revised and general revisions made	GD	MB	10/04/18
3	Amendments per Hco Comments (22/12/17)	ZC	MB	19/01/18
2	Amendments to allow CLT Coordination	ZC	MB	08/12/17
1	Preliminary Issue	ZC	MB	24/11/17

rev	description	drawn	checked	date
revisions				

status: PRELIMINARY  
This drawing is protected under The Copyright, Designs and Patents Act 1988. Do not scale. Figured dimensions only are to be taken from this drawing. All dimensions are to be checked on site before any work is put in hand. If in doubt, ASK.

## GA Section F-F Part 1

1 : 50

## P T A L

PETER TAYLOR ASSOCIATES LIMITED  
7 OURZON STREET  
MAYFAIR LONDON W1J 5HG  
-  
TELEPHONE + 44 (0)20 7495 3837  
FACSIMILE + 44 (0)20 7493 3475  
EMAIL MAYFAIR@PTAL.CO.UK  
-  
WWW.PTAL.CO.UK

client: Neilcott Construction Group  
Excel House  
Cray Avenue  
Orpington  
Kent  
BR5 3ST



project: Central Somers Town  
Plot 4

title: GA Section D-D Part 1

scale: 1 : 50 @ A1

date: 24/11/17

drawn: ZC

checked: MB

Project ID: 170025 Originator: PTA Drawing No: P4-XX-DR-A-09-006 revision: P 5

