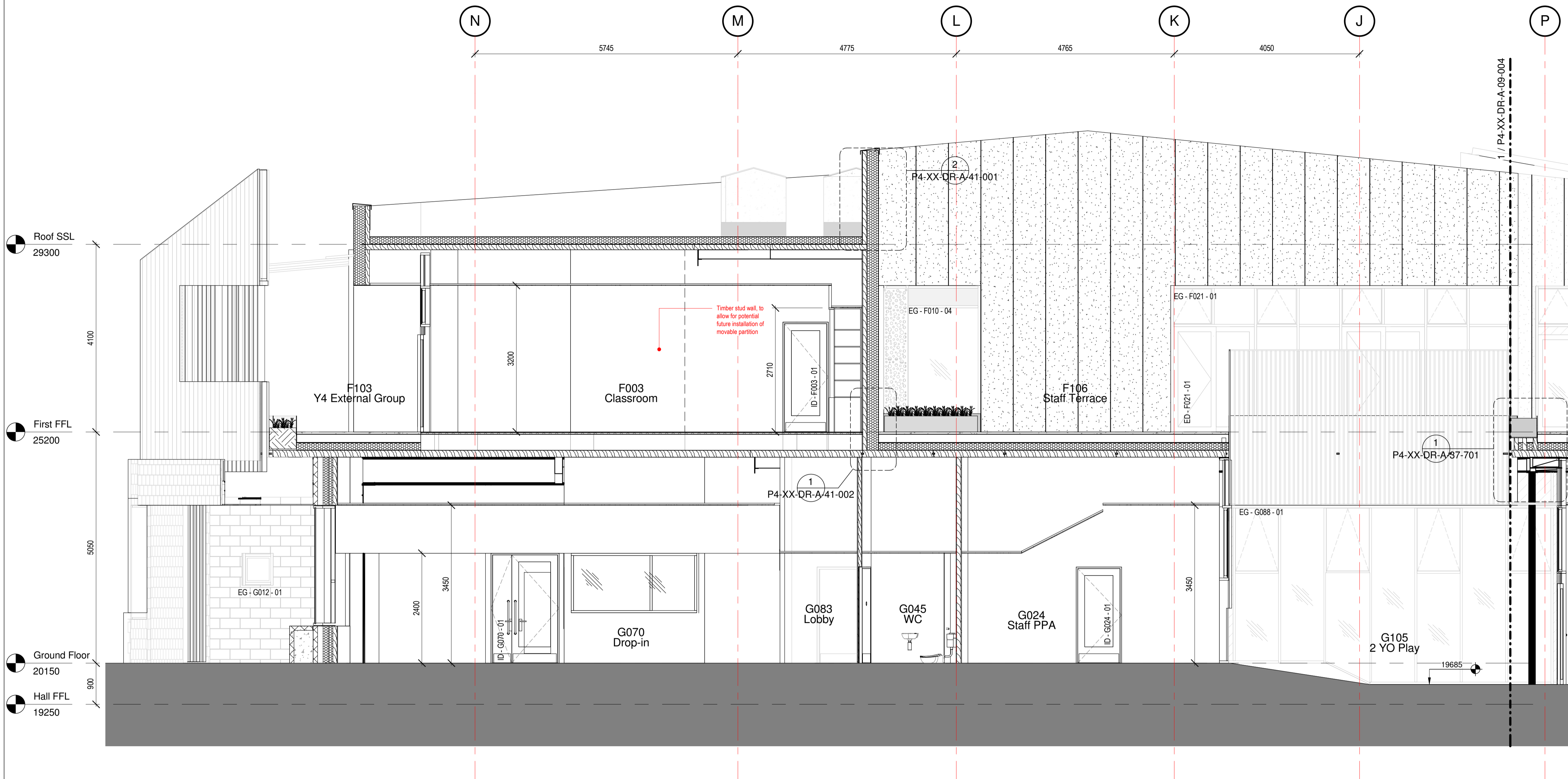


Note: Issued to all parties for coordination purposes



5	Discharge Planning Condition 7.	MB	NF	25/05/18
4	Wall type revised and general revisions made	GD	MB	10/04/18
3	Revisions in line with VE51 & Hco comments	ZC	MB	19/01/18
2	Amendments to allow CLT Coordination	ZC	MB	08/12/17
1	Preliminary Issue	ZC	MB	24/11/17

rev	description	drawn	checked	date
revisions				

status: PRELIMINARY

This drawing is protected under The Copyright, Designs and Patents Act 1988. Do not scale. Figured dimensions only are to be taken from this drawing. All dimensions are to be checked on site before any work is put in hand. If in doubt, ASK.

# PTAL

PETER TAYLOR ASSOCIATES LIMITED  
 7 CURZON STREET  
 MAYFAIR LONDON W1J 5HG  
 -  
 TELEPHONE + 44 (0)20 7495 3837  
 FACSIMILE + 44 (0)20 7493 3475  
 EMAIL MAYFAIR@PTAL.CO.UK  
 -  
 WWW.PTAL.CO.UK

client: Neilcott Construction Group  
 Excel House  
 Cray Avenue  
 Orpington  
 Kent  
 BR5 3ST



project: Central Somers Town  
 Plot 4

title: GA Section B-B Part 1

scale: 1 : 50 @ A1

date: 24/11/17

drawn: ZC

checked: MB

Project ID: 170025 Originator: PTA Drawing No: P4-XX-DR-A-09-003 revision: P 5

