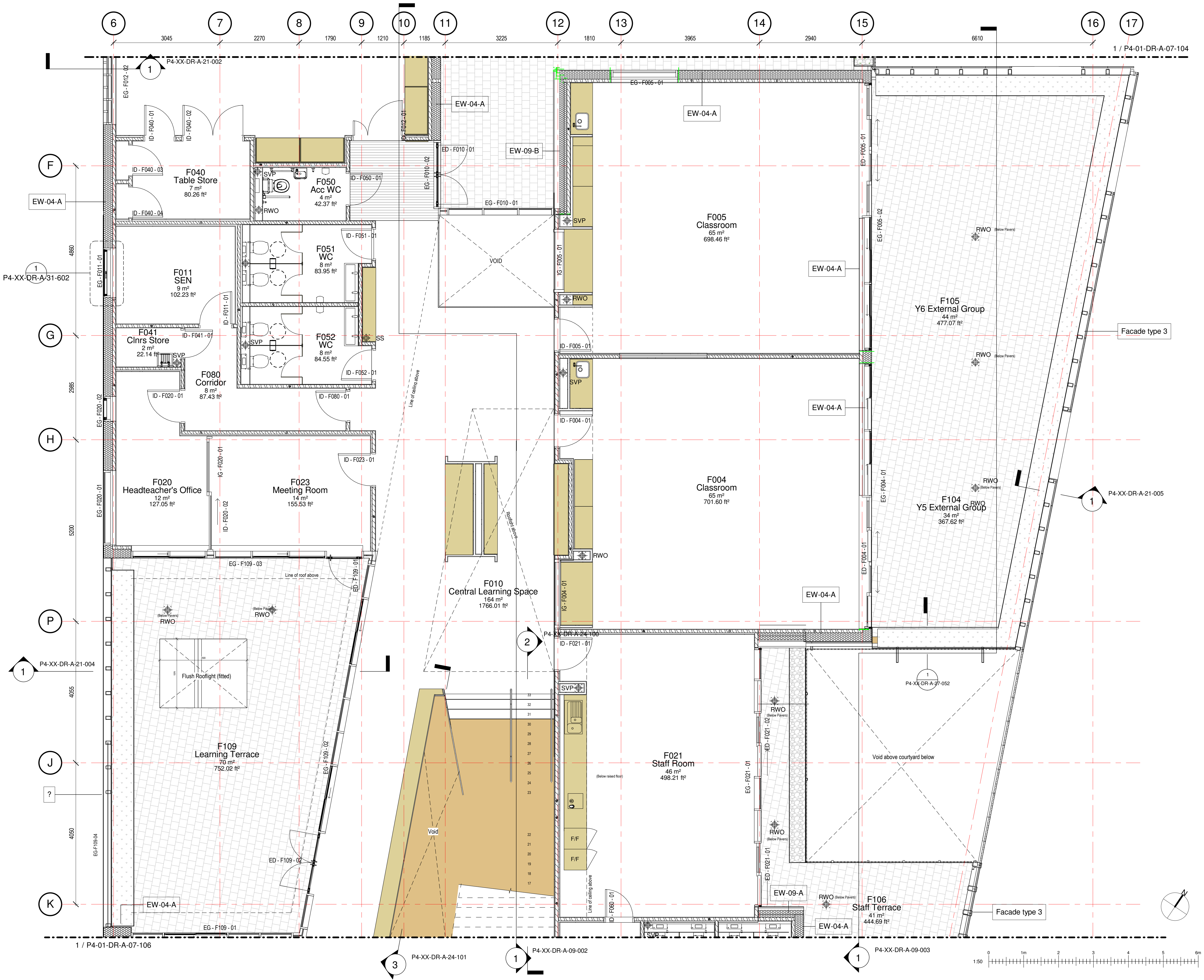


- SVP Soil vent pipe
- RWP Rain water pipe
- SS Stub stack



rev	description	drawn	checked	date
C2	Discharge Planning Condition 7.	MB	NF	25/05/18
C1	Internal walls updated. Construction Issue	TD	MB	18/05/18
10	Wall type revised and general revisions made	GD	MB	10/04/18
9	Minor amendments made, detail tags added and drainage coordinated	ZC	MB	09/03/18
8	Minor amendments & above ground drainage coordination	ZC	MB	13/02/18
7	Co-ordinated RWO and Public Health. General revisions made	ZC	MB	31/01/18
6	Amendments per Hco Comments (22/12/17)	ZC	MB	19/01/18
5	CAD issued for information	NS	NF	08/01/18
4	Wall Tags Added	ZC	NF	18/12/17
3	Amendments to allow CLT Coordination	ZC	MB	08/12/17
2	Amendments further to DLM 22/11/17. Door and window tags added. Issued for coordination	ZC	MB	01/12/17
1	Preliminary Issue	ZC	MB	16/11/17

status: CONSTRUCTION  
 This drawing is protected under The Copyright, Designs and Patents Act 1988. Do not scale. Figured dimensions only are to be taken from this drawing. All dimensions are to be checked on site before any work is put in hand. If in doubt, ASK.

**P T A L**

PETER TAYLOR ASSOCIATES LIMITED  
 7 CURZON STREET  
 MAYFAIR LONDON W1J 5HG

TELEPHONE +44 (0)20 7495 3837  
 FACSIMILE +44 (0)20 7493 3475  
 EMAIL MAYFAIR@PTAL.CO.UK  
 WWW.PTAL.CO.UK

client: Neillcott Construction Group  
 Excel House  
 Cray Avenue  
 Orpington  
 Kent  
 BR5 3ST



project: Central Somers Town  
 Plot 4

title: GA First Floor Plan - Part 2

scale: 1 : 50 @ A1  
 date: 16/11/17  
 drawn: ZC  
 checked: MB

Project ID: 170025 Originator: PTA Drawing No: P4-01-DR-A-07-105 revision: C2