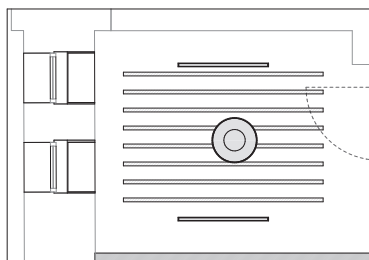
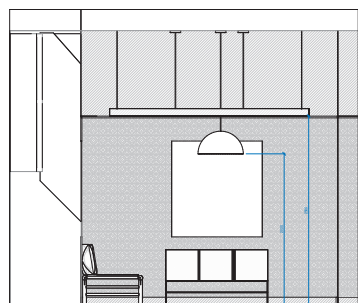


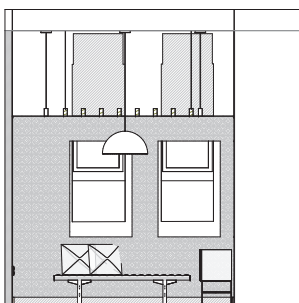
FP BSMT FLOOR - WELLNESS ROOM - FLOOR PLAN
1:25



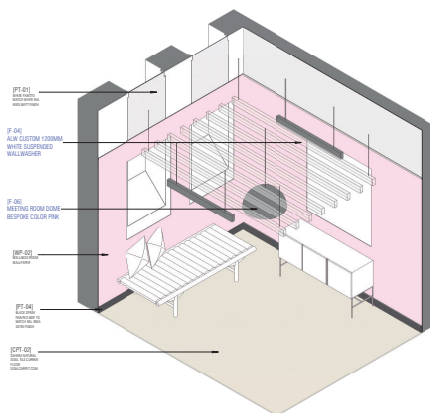
CP BSMT FLOOR - WELLNESS ROOM - CEILING PLAN
1:25



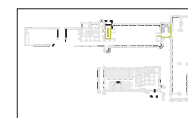
FE BSMT FLOOR - WELLNESS ROOM - FRONT ELEVATION
1:25



LE BSMT FLOOR - WELLNESS ROOM - LEFT ELEVATION
1:25



BASEMENT - SCHEME B



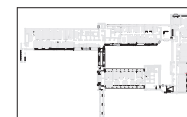
GROUND FLOOR - SCHEME A



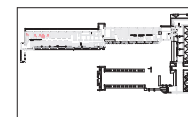
1ST FLOOR - SCHEME B



2ND FLOOR - SCHEME A



4TH FLOOR - SCHEME B



5TH FLOOR - SCHEME A

1. WHEN SETTING OUT CARPETS AND TILES ALWAYS BEGIN LAYING WITH A FULL TILE AT FRONT OF ROOM OR MAIN SIZE OF WALL OR FLOOR.
2. ALL EXPOSED JOINT IN PLYWOOD MUST BE MITERED
3. ALL CABINET DOOR MUST HAVE FINGER PULL DETAIL



Rev	Description	Date
B	ISSUE FOR CONSTRUCTION - FULL PACK	18/07/16
A	ISSUE FOR TENDER	18/06/09

labit group
 Avda de America 52 | E: info@labit.es
 27 28020 Madrid | W: www.labit.es
 Spain | T: +34 915 103 003

Architect: **Elvira Conajero Crespo**

Signature: _____

Job No.: **LB-PB-WHM-18**

Scale: **As indicated@A0**

Title: **WELLNESS**

Sheet: **A - 7.0 TM.07** Rev: **B**