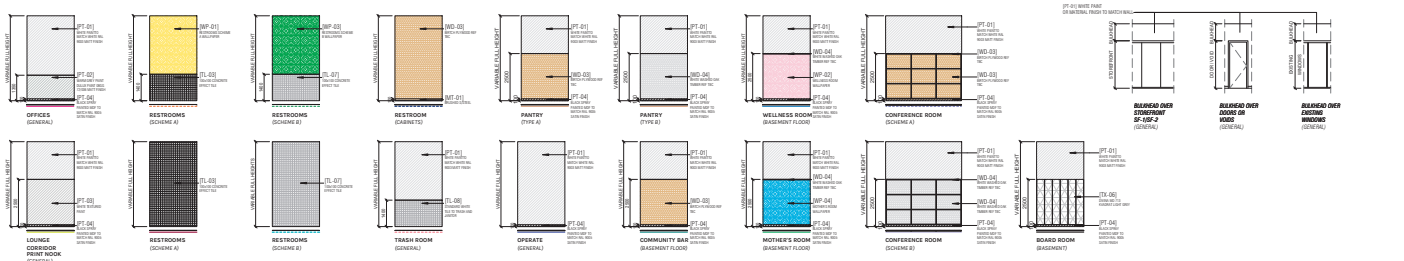
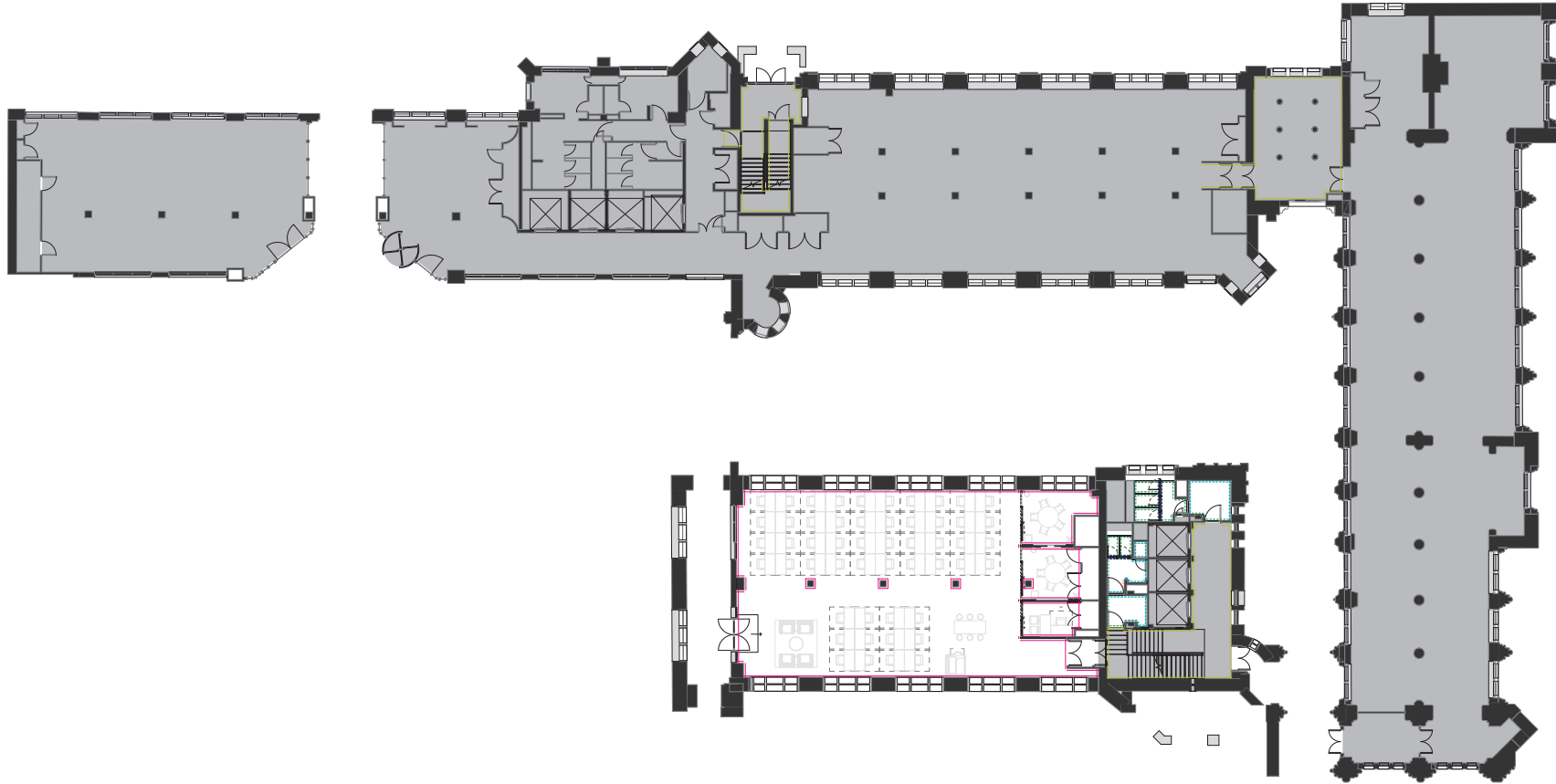


**WALL FINISH LEGEND**

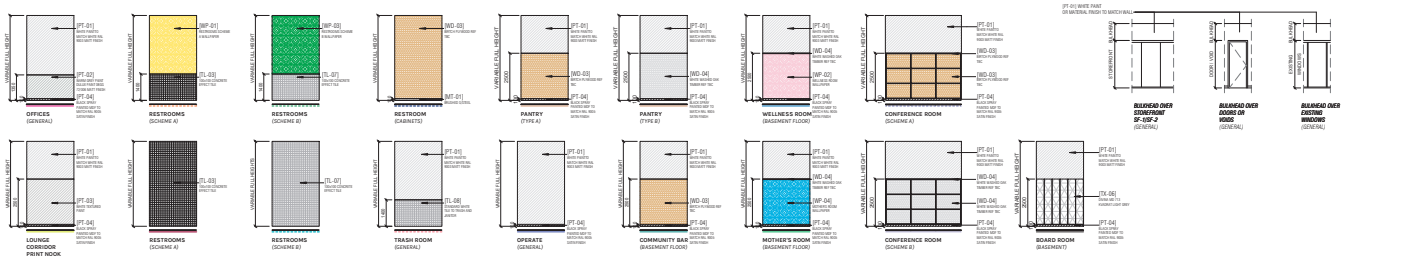


**SHEET NOTES**

1. REFER TO IAS-6 KEYS FOR CEILING FINISHES.
2. CONTRACTOR SHALL EXAMINE ALL SUBSTRATE IN ADVANCE WITH THE MANUFACTURER'S MP TO DETERMINE SCHEDULE PRIOR TO START OF WORK. MAKE CORRECTIONS AS NEEDED TO SUITABLE SUBSTRATE. INCLUDING BUT NOT LIMITED TO: 20% STRENGTH CONCRETE, LEAKY JOINTS AND LEAKAGE, AND MOISTURE CONTENT OF CONCRETE. TO VERIFY SUITABLE SUBSTRATE AND WALL FINISHES THROUGH THE ROOM. ALL START WORK SHALL BE SCHEDULED AND ACCEPTED IN WRITING BY THE MANUFACTURER AND APPLICABLE SUBCONTRACTOR FOR EACH SCHEDULED MATERIAL AND FINISH. REGARDING SUBSTRATE PREPARATION REFER TO SPECIFICATIONS.
3. ALL FINISH MATERIALS SHALL BE STORED, HANDLED, PREPARED AND APPLIED ON SITE IN ACCORDANCE WITH THE MANUFACTURER'S WRITTEN RECOMMENDATIONS.
4. UNLESS OTHERWISE SHOWN, PAINT EXISTING PARTITIONS, COLUMNS, CORE WALL AND EXTERIOR PERIMETER WALL TO MATCH EXISTING WHERE CUT/PATCH WORK HAS OCCURRED. MATCH EXISTING COLOR, PATTERN AND FINISH.
5. WHERE FLOOR MONUMENTS ARE SHOWN TO BE REMOVED, PATCH WITH CARPET TO MATCH EXISTING WITH SAP DIRECTION TO MATCH EXISTING.
6. LEAVE JOISTS AND AFFECTED AREAS CLEAN, VACUUMED AND OPENLY READY FOR MOVE IN. CLEAN GLASS, INCLUDING THE PERIMETER EXTERIOR WINDOW WALL WHERE APPLICABLE.
7. IN AREAS AND ROOMS WHERE TILE OR STONE FLOORING ARE SCHEDULED, CONTRACTOR SHALL LOCATE EXISTING CONTROL JOINTS, CONTRACTION JOINTS, SEAM JOINTS, EXPANSION JOINTS AND CRACKS (INCLUDING FLOORING OR FACTORY DEFECTS) 48 HOURS PRIOR TO PREPARATION OF SHOP DRAWINGS AND START OF WORK. FLOORING MATERIAL SUPPLIER AND FLOORING SUBCONTRACTOR SHALL ACCEPT SUBSTRATE IN WRITING PRIOR TO START OF WORK.

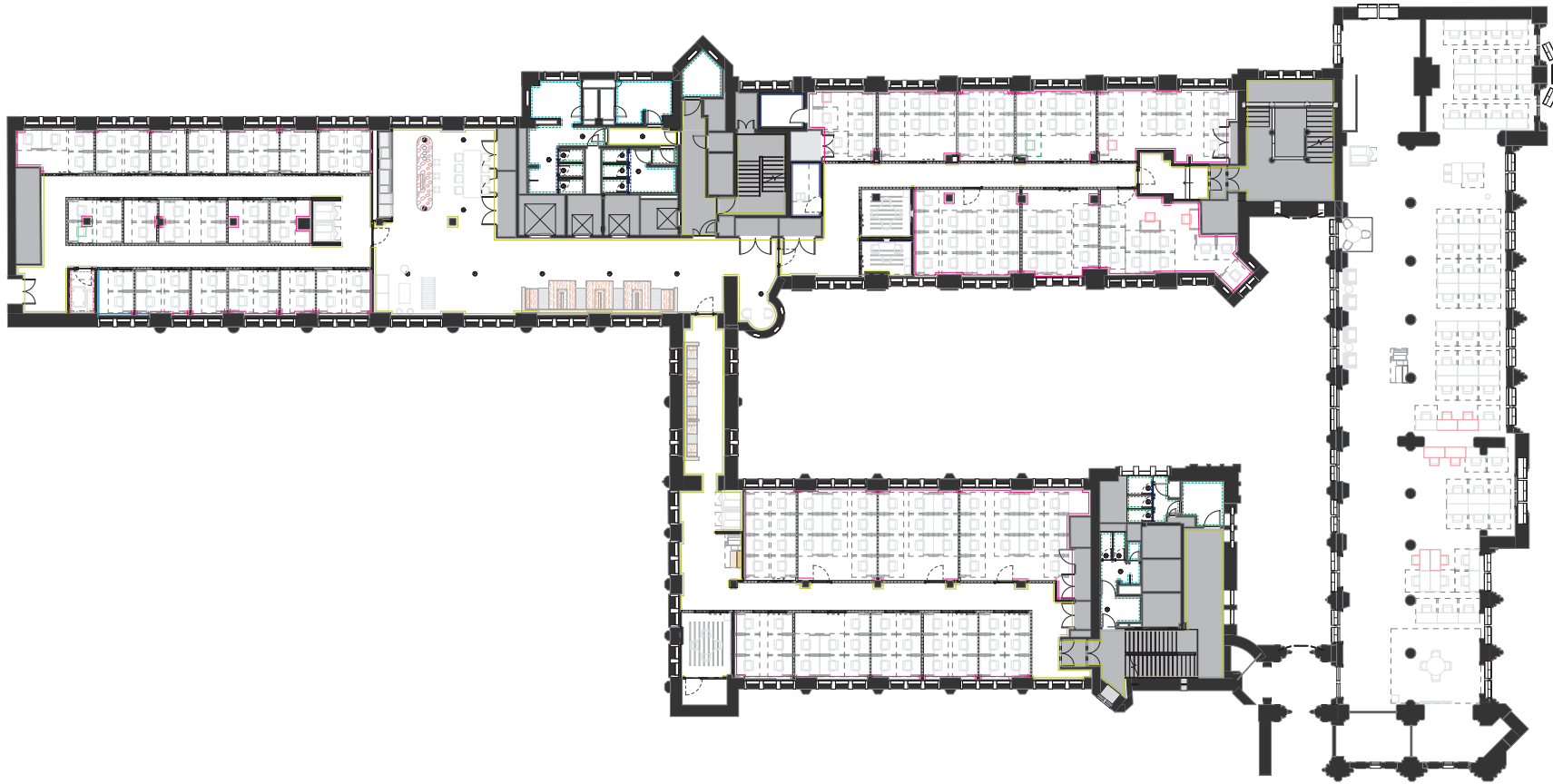


**WALL FINISH LEGEND**

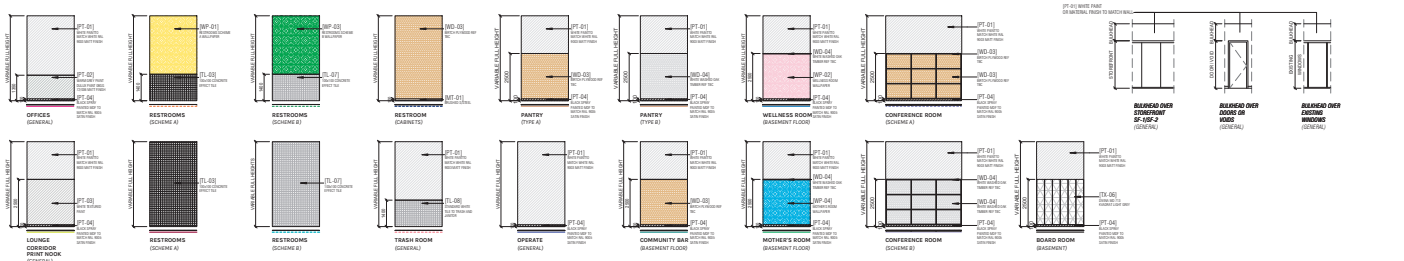


**SHEET NOTES**

- REFER TO JAS O RCP FOR CEILING FINISHES.
- CONTRACTOR SHALL EXAMINE ALL SUBSTRATES IN ADVANCE WITH THE MANUFACTURERS MP TO DETERMINE SUITABILITY PRIOR TO START OF WORK. MAKE CORRECTING AS NEEDED TO SURFACE DEFECTS, INCLUDING BUT NOT LIMITED TO OUT OF TOLERANCE CONCRETE SLAB PLATNESS AND LEVELNESS AND MOISTURE CONTENT OF CONCRETE. TO SATISFY MANUFACTURERS AND WALL FINISH FINISHING THE WORK. DO NOT START WORK UNTIL SUBSTRATES ARE ACCEPTED IN WRITING BY THE MANUFACTURER AND APPLICABLE SUBCONTRACTOR FOR EACH SCHEDULED MATERIAL AND FINISH. REGARDING SUBSTRATE PREPARATION REFER TO SPECIFICATIONS.
- ALL FINISH MATERIALS SHALL BE STORED, HANDLED, PREPARED AND APPLIED ON SITE IN ACCORDANCE WITH THE MANUFACTURERS WRITTEN RECOMMENDATIONS.
- UNLESS OTHERWISE SHOWN, PAINT EXISTING PARTITIONS, COLUMN, CORE WALL AND EXTERIOR PERIMETER WALL TO MATCH EXISTING WHERE CLEAN PATCH WORK HAS OCCURRED. MATCH EXISTING COLOR, SPECIES AND FINISH.
- WHERE FLOOR MONUMENTS ARE SHOWN TO BE REMOVED, PATCH WITH CARPET TO MATCH EXISTING WITH NAP DIRECTION TO MATCH EXISTING.
- IN AREAS AND ROOMS WHERE TILE OR STONE FLOORING ARE SCHEDULED, CONTRACTOR SHALL LOCATE EXISTING CONTROL JOINTS, SEAMING JOINTS, EXPANSION JOINTS AND COLLARS INCLUDING LOCATION OF EXISTING SUBSTRATE SETBACKS FOR ARCHITECTS REVIEW PRIOR TO PREPARATION OF SHOP DRAWINGS AND START OF WORK. FLOORING MATERIAL SUPPLIER AND FLOORING SUBCONTRACTOR SHALL ACCEPT SUBSTRATE IN WRITING PRIOR TO START OF WORK.

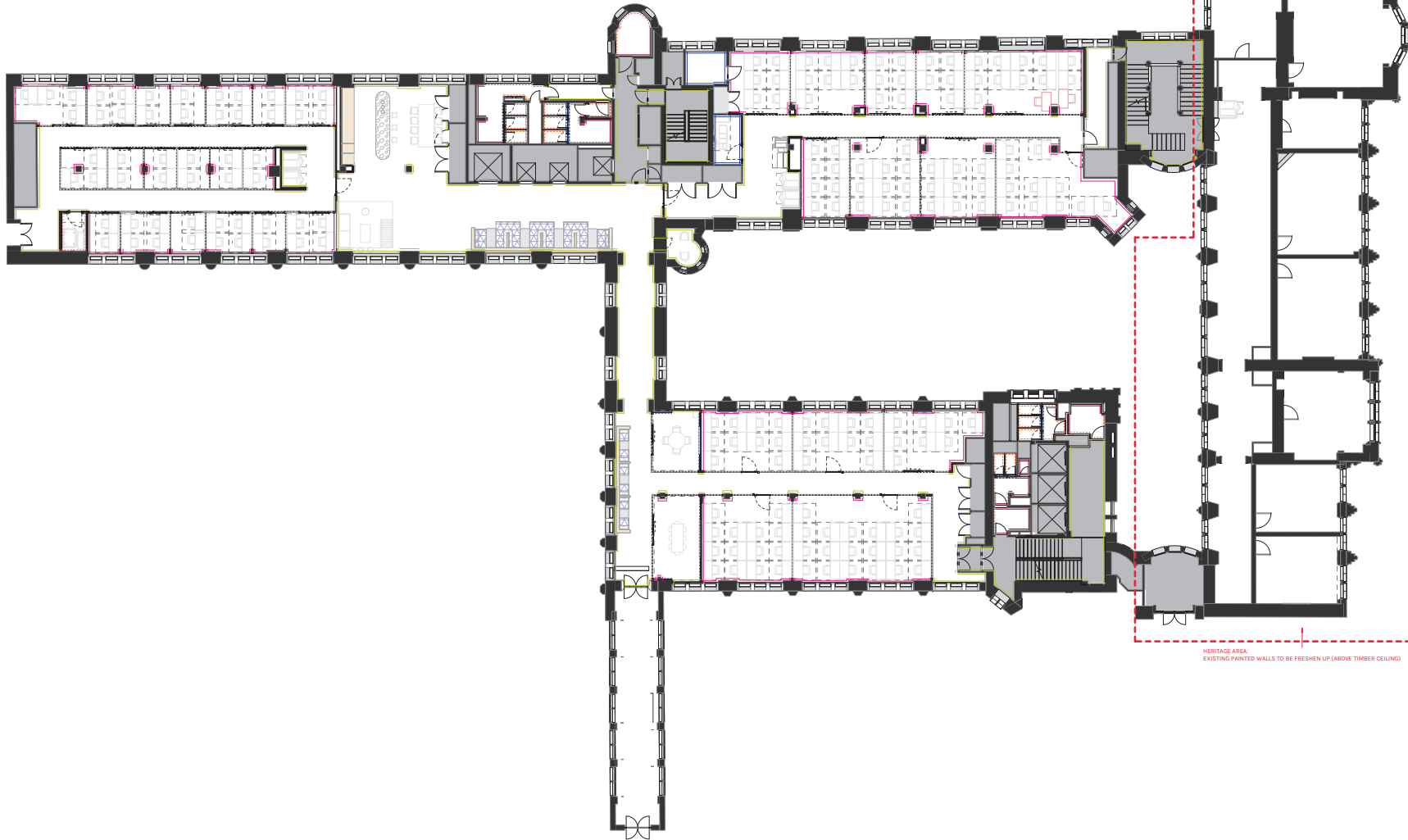


**WALL FINISH LEGEND**



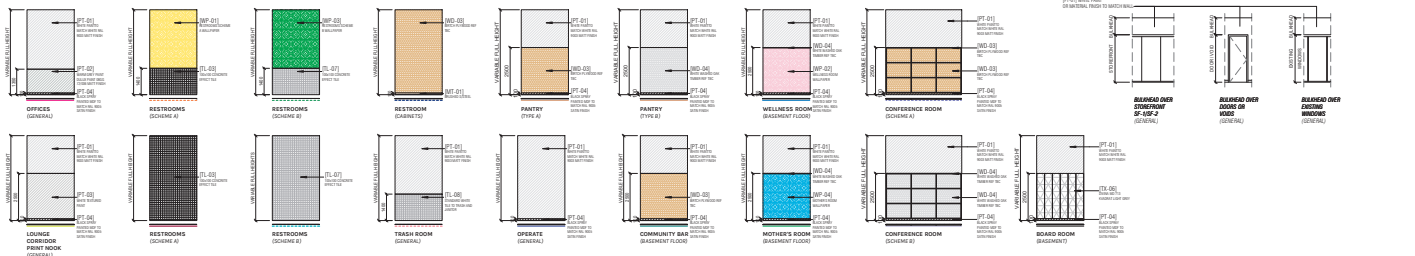
**SHEET NOTES**

- REFER TO IAS 6 RFP FOR CEILING FINISHES.
- CONTRACTOR SHALL EXAMINE ALL SUBSTRATE IN ADVANCE WITH THE MANUFACTURER'S HP TO DETERMINE SUITABILITY PRIOR TO START OF WORK. MAKE CORRECTIONS AS NEEDED TO SUITABLE SUBSTRATE. INCLUDE BUT NOT LIMITED TO: TO EXISTING CONCRETE, SLAB, GYPSUM AND LIME PLASTER, AND MASONRY. CONTROL OF CONCRETE TO SUIT RFP MANUFACTURER AND WALL FINISH MANUFACTURER. THE WORK IS NOT TO BE STARTED UNTIL THE MANUFACTURER AND APPLICABLE SUBCONTRACTOR FOR EACH SCHEDULED MATERIAL AND FINISH, REGARDING SUBSTRATE PREPARATION MEETS TO SPECIFICATIONS.
- ALL FINISH MATERIALS SHALL BE STORED, HANDLED, PREPARED AND APPLIED ON SITE IN ACCORDANCE WITH THE MANUFACTURER'S WRITTEN RECOMMENDATIONS.
- UNLESS OTHERWISE SHOWN, PAINT EXISTING PARTITIONS, COLUMNS, CORE WALL AND EXTERIOR PERIMETER WALL TO MATCH EXISTING WHERE PATCH WORK HAS OCCURRED. MATCH EXISTING COLOR, SHEEN AND FINISH.
- WHERE FLOOR MONUMENTS ARE SHOWN TO BE REMOVED, PATCH WITH CARPET TO MATCH EXISTING WITH NAP DIRECTION TO MATCH EXISTING.
- LEAVE JOISTS AND AFFECTED AREAS CLEAN, VACUUMED AND ORDERLY. READY FOR MOVE IN. CLEAN GLASS, INCLUDING THE PERIMETER EXTERIOR WINDOW WALL WHERE APPLICABLE.
- IN AREAS AND ROOMS WHERE TILE OR STONE FLOORING ARE SCHEDULED, CONTRACTOR SHALL LOCATE EXISTING CONTROL JOINTS, SEAM JOINTS, EXPANSION JOINTS AND CRACK JOINTS. INCLUDING FINISH OF EXISTING OPERATIONAL SETTINGS FOR ARCHITECT'S REVIEW PRIOR TO PREPARATION OF SHOP DRAWINGS AND START OF WORK. FLOORING MATERIAL SUPPLIER AND FLOORING SUBCONTRACTOR SHALL ACCEPT SUBSTRATE IN WRITING PRIOR TO START OF WORK.



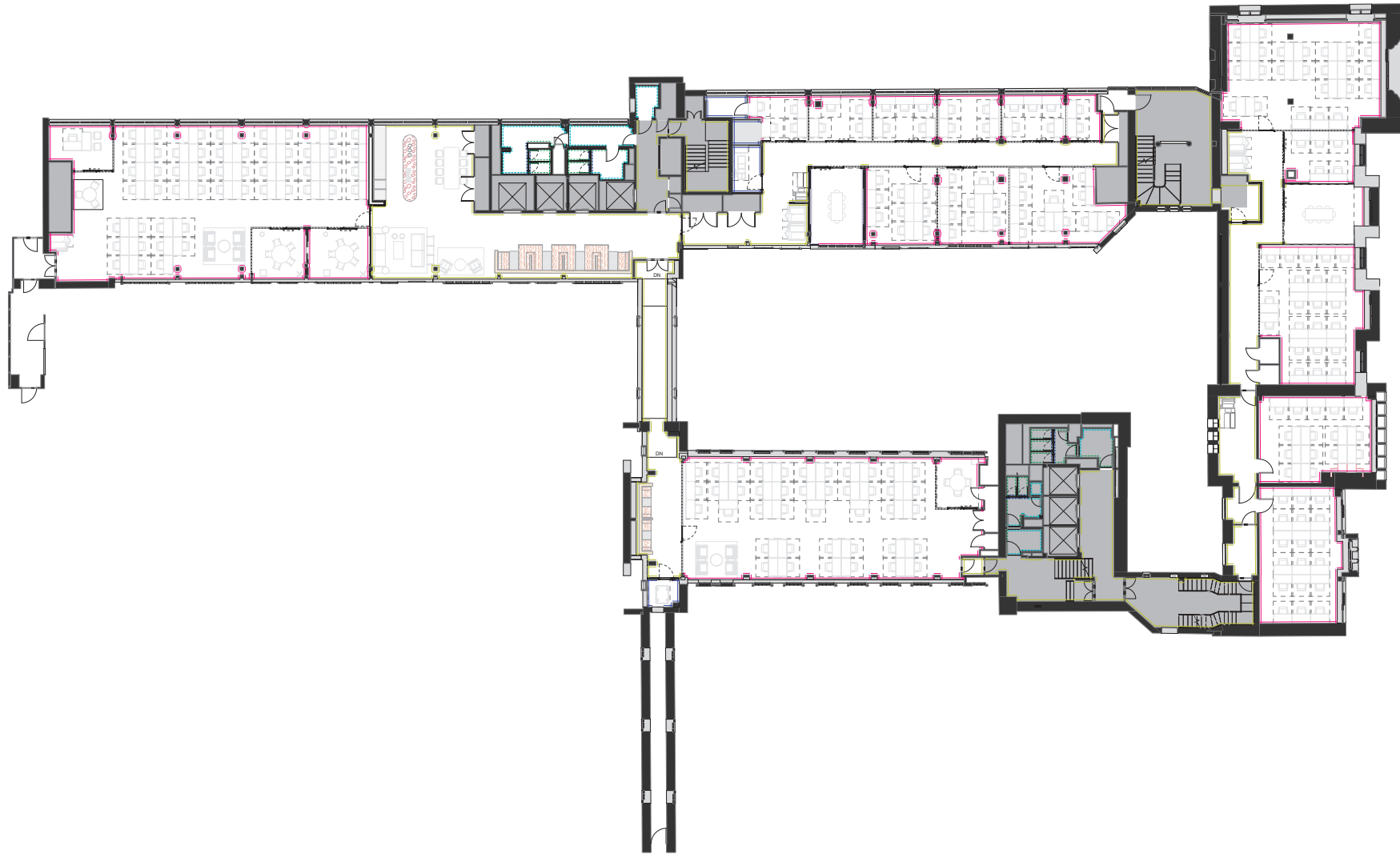
HERITAGE AREA  
EXISTING PAINTED WALLS TO BE FRESHEN UP (ABOVE TIMBER CEILING)

**WALL FINISH LEGEND**

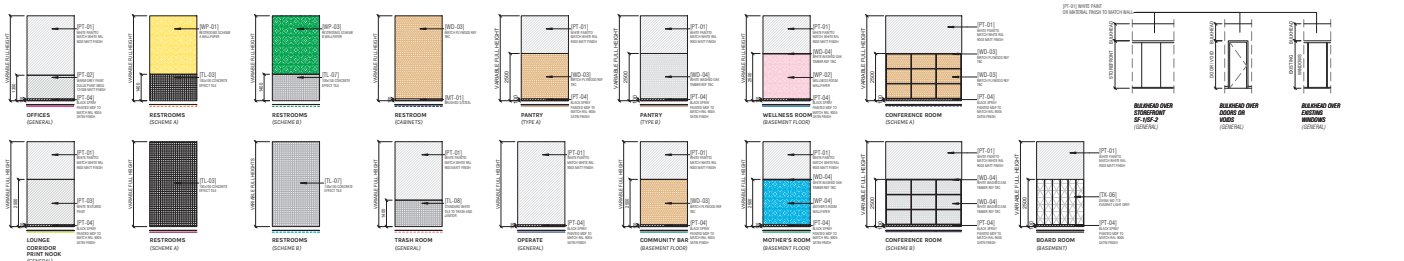


**SHEET NOTES**

1. REFER TO IAS 4 RFP FOR CEILING FINISHES.
2. CONTRACTOR SHALL EXAMINE ALL SUBSTRATES IN ADVANCE WITH THE MANUFACTURERS BP TO DETERMINE SUITABILITY PRIOR TO START OF WORK. MAKE CORRECTING AS NEEDED TO SURFACE DEFECTS, INCLUDING BUT NOT LIMITED TO OUT OF TOLERANCE CONCRETE AND UNLEVELLED AND MOISTURE CONTENT OF CONCRETE. TO SATISFY MANUFACTURERS WHO WILL THEN FINISH THE WORK. DO NOT START WORK UNTIL SUBSTRATES ARE ACCEPTED IN WRITING BY THE MANUFACTURER AND APPLICABLE SUBCONTRACTOR FOR EACH SCHEDULED MATERIAL AND FINISH. REGARDING SUBSTRATE PREPARATION REFER TO SPECIFICATIONS.
3. ALL FINISH MATERIALS SHALL BE STORED, HANDLED, PREPARED AND APPLIED ON SITE IN ACCORDANCE WITH THE MANUFACTURERS WRITTEN RECOMMENDATIONS.
4. UNLESS OTHERWISE SHOWN, PAINT EXISTING PARTITIONS, COLLARS, CORE WALL AND EXTERIOR PERIMETER WALL TO MATCH EXISTING WHERE PATCH WORK HAS OCCURRED. MATCH EXISTING COLOR, SPECIES AND FINISH.
5. WHERE FLOOR MONUMENTS ARE SHOWN TO BE REMOVED, PATCH WITH CARPET TO MATCH EXISTING WITH HAP DIRECTION TO MATCH EXISTING.
6. LEAVE JOISTS AND AFFECTED AREAS CLEAN, VACUUMED AND DRY/READY FOR MOVE IN. CLEAN GLASS, INCLUDING THE PERIMETER EXTERIOR WINDOW WALL WHERE APPLICABLE.
7. IN AREAS AND ROOMS WHERE TILE OR STONE FLOORING ARE SCHEDULED, CONTRACTOR SHALL LOCATE EXISTING CONTROL JOINTS, SEAM JOINTS, EXPANSION JOINTS AND CLEAN JOISTS/BEAMS/KNICKS OR EXCESS OPERATIONS SETBACKS FOR ARCHITECTS REVIEW PRIOR TO PREPARATION OF SHOP DRAWINGS AND START OF WORK. FLOORING MATERIAL SUPPLIER AND FLOORING SUBCONTRACTOR SHALL SUBMIT SUBSTRATE IN WRITING PRIOR TO START OF WORK.



**WALL FINISH LEGEND**



**SHEET NOTES**

- REFER TO IAS 6 ROPS FOR CEILING FINISHES.
- CONTRACTOR SHALL EXAMINE ALL SUBSTRATE IN ADVANCE WITH THE MANUFACTURER'S MP TO DETERMINE SUITABILITY PRIOR TO START OF WORK. MAKE CORRECTING AS NEEDED TO SUITABLE SUBSTRATE. UNLESS OTHERWISE SPECIFIED, ALL SURFACES SHALL BE CLEAN, DRY, AND FREE OF OIL, GREASE, AND OTHER CONTAMINANTS. ALL SURFACES SHALL BE PROTECTED FROM DAMAGE PRIOR TO START OF WORK. MANUFACTURER'S AND WALL FINISH FINISHES SHALL BE ACCEPTED BY WRITING BY THE MANUFACTURER AND APPLICABLE SUBCONTRACTOR FOR EACH SCHEDULED MATERIAL AND FINISH. REGARDING SUBSTRATE PREPARATION REFER TO SPECIFICATIONS.
- ALL FINISH MATERIALS SHALL BE STORED, HANDLED, PREPARED AND APPLIED ON SITE IN ACCORDANCE WITH THE MANUFACTURER'S WRITTEN RECOMMENDATIONS.
- UNLESS OTHERWISE SHOWN, PAINT EXISTING PARTITIONS, COLUMNS, CORE WALL AND EXTERIOR PERIMETER WALL TO MATCH EXISTING WHERE PATCH WORK HAS OCCURRED. MATCH EXISTING COLOR, PATTERN AND FINISH.
- WHERE FLOOR MONUMENTS ARE SHOWN TO BE REMOVED, PATCH WITH CARPET TO MATCH EXISTING WITH SAMP SECTION TO MATCH EXISTING.
- LEAVE JOISTS AND AFFECTED AREAS CLEAN, VACUUMED AND OPENLY, READY FOR MOVE IN. CLEAN GLASS, INCLUDING THE PERIMETER EXTERIOR WINDOW WALL WHERE APPLICABLE.
- IN AREAS AND ROOMS WHERE TILE OR STONE FLOORING ARE SCHEDULED, CONTRACTOR SHALL LOCATE EXISTING CONTROL JOINTS, EXPANSION JOINTS AND OTHER JOINTS INCLUDING FINISHES OR EXISTING OPERATIONAL SETTINGS FOR ARCHITECT'S REVIEW PRIOR TO PREPARATION OF SHOP DRAWINGS AND START OF WORK. FLOORING MATERIAL SUPPLIER AND FLOORING SUBCONTRACTOR SHALL ACCEPT SUBSTRATE IN WRITING PRIOR TO START OF WORK.



Architect: **Elvira Conzago Crespo**

Signature:

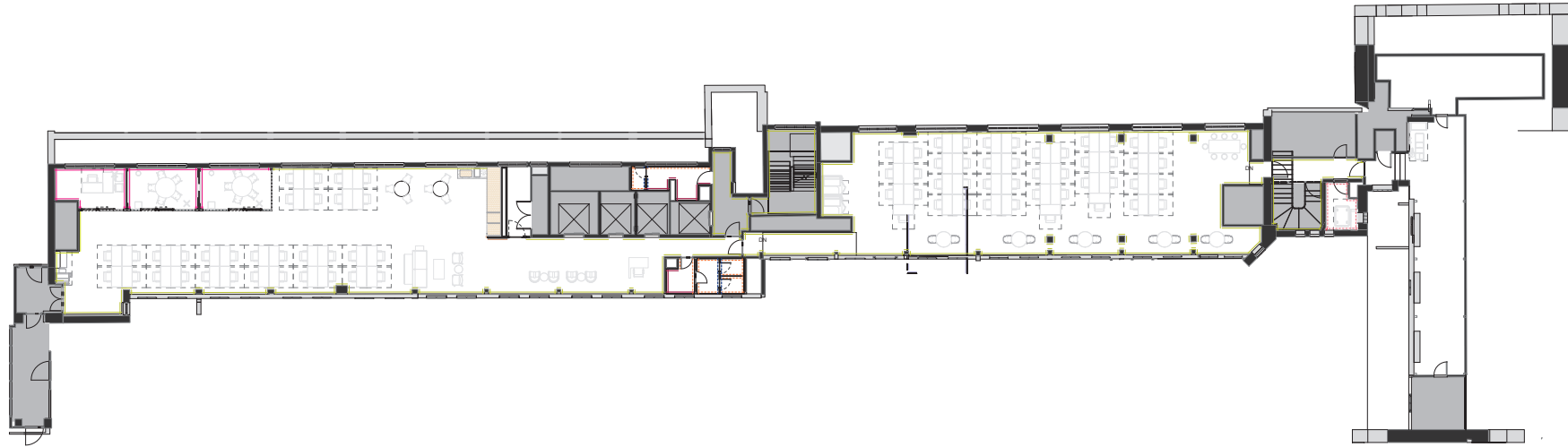
Job No.: **LB-P0-wvwm-18**

Scale: **1 : 100@A0**

Title: **4TH FLOOR WALL**

**FINISHES**

Sheet: **A-6.1 L04** Rev: **B**



B ISSUE FOR CONSTRUCTION - FULL PACK 18/07/16  
A ISSUE FOR TENDER 18/06/19

Rev. Description Date



Architect: **Elvira Conzago Crespo**

Signature:

Job No.: **LB-PB-wework-18**

Scale: **1 : 100@A0**

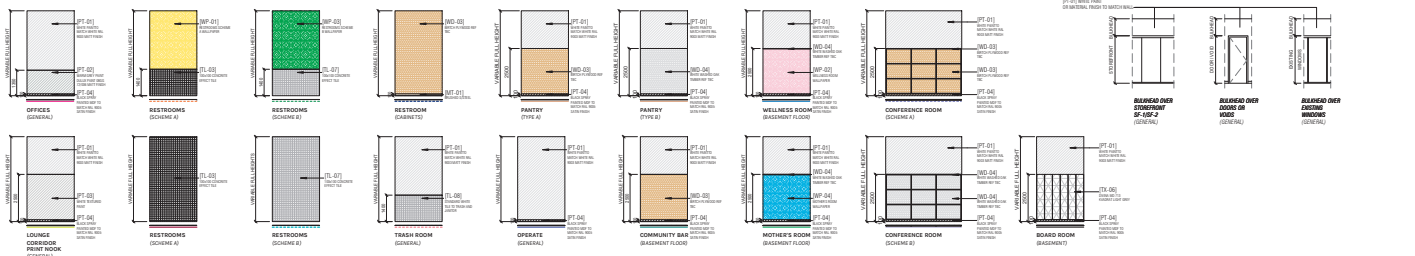
Title: **5TH FLOOR WALL**

**FINISHES**

Sheet: **A-6.1 L05**

Rev: **B**

**WALL FINISH LEGEND**



**SHEET NOTES**

- 1. REFER TO JAS-6 RCP FOR CEILING FINISHES.
- 2. CONTRACTOR SHALL EXAMINE ALL SUBSTRATE IN ADVANCE WITH THE MANUFACTURER'S HP TO DETERMINE SUITABILITY PRIOR TO START OF WORK. MAKE CORRECTIONS AS NEEDED TO SUBSTRATE. UNLESS NOTED OTHERWISE, ALL SURFACES SHALL BE CLEAN, DRY, AND FREE OF OIL, GREASE, AND EXCESSIVE CONCRETE. TO VERIFY MANUFACTURER'S RECOMMENDATIONS, THE WORK SHALL BE TESTED IN WRITING BY THE MANUFACTURER AND APPLICABLE SUBCONTRACTOR FOR EACH SCHEDULED MATERIAL AND FINISH. REGARDING SUBSTRATE PREPARATION REFER TO SPECIFICATIONS.
- 3. ALL FINISH MATERIALS SHALL BE STORED, HANDLED, PREPARED AND APPLIED ON SITE IN ACCORDANCE WITH THE MANUFACTURER'S WRITTEN RECOMMENDATIONS.
- 4. UNLESS OTHERWISE SHOWN, PAINT, EXISTING PARTITIONS, COLUMNS, CORE WALL AND EXTERIOR PERIMETER WALL TO MATCH EXISTING WHERE PATCH WORK HAS OCCURRED. MATCH EXISTING COLOR, PATTERN AND FINISH.
- 5. WHERE FLOOR MONUMENTS ARE SHOWN TO BE REMOVED, PATCH WITH CARPET TO MATCH EXISTING WITH NAP DIRECTION TO MATCH EXISTING.
- 6. IN AREAS AND ROOMS WHERE TILE OR STONE FLOORING ARE SCHEDULED, CONTRACTOR SHALL LOCATE EXISTING CONTROL JOINTS, EXPANSION JOINTS AND CRACKS. INSTALL DILATION JOINTS OR EXCESS EXPANSION JOINTS PRIOR TO PREPARATION OF SHOP DRAWINGS AND START OF WORK. FLOORING MATERIAL SUPPLIER AND FLOORING SUBCONTRACTOR SHALL ACCEPT SUBSTRATE IN WRITING PRIOR TO START OF WORK.