

ROOMS OFFICES & CORRIDOR LIGHTING SETTING OUT AS PER ROOMS  
LEA'S LAYOUT / LUX LEVELS CALCULATIONS & QUANTITIES.

LIGHTING FIXTURE SCHEDULE							
CODE	SYMBOL	IMAGE	DESCRIPTION	MANUFACTURER	MODEL	COUNT	PROVIDED BY
F-001			RECESSED DOWNLIGHT	OSRAM	ARCADE	100	OSRAM
F-002			PENDANT LIGHT	OSRAM	ARCADE	100	OSRAM
F-003			TRACK LIGHTING	OSRAM	ARCADE	100	OSRAM
F-004			SURFACE LIGHT	OSRAM	ARCADE	100	OSRAM
F-005			SPOTLIGHT	OSRAM	ARCADE	100	OSRAM
F-006			TRACK LIGHTING	OSRAM	ARCADE	100	OSRAM
F-007			TRACK LIGHTING	OSRAM	ARCADE	100	OSRAM
F-008			TRACK LIGHTING	OSRAM	ARCADE	100	OSRAM
F-009			TRACK LIGHTING	OSRAM	ARCADE	100	OSRAM
F-010			TRACK LIGHTING	OSRAM	ARCADE	100	OSRAM

CODE	SYMBOL	IMAGE	DESCRIPTION	MANUFACTURER	MODEL	COUNT	PROVIDED BY
F-011			TRACK LIGHTING	OSRAM	ARCADE	100	OSRAM
F-012			TRACK LIGHTING	OSRAM	ARCADE	100	OSRAM
F-013			TRACK LIGHTING	OSRAM	ARCADE	100	OSRAM
F-014			TRACK LIGHTING	OSRAM	ARCADE	100	OSRAM
F-015			TRACK LIGHTING	OSRAM	ARCADE	100	OSRAM
F-016			TRACK LIGHTING	OSRAM	ARCADE	100	OSRAM
F-017			TRACK LIGHTING	OSRAM	ARCADE	100	OSRAM
F-018			TRACK LIGHTING	OSRAM	ARCADE	100	OSRAM
F-019			TRACK LIGHTING	OSRAM	ARCADE	100	OSRAM
F-020			TRACK LIGHTING	OSRAM	ARCADE	100	OSRAM

RCP LEGEND	
	SECURITY CAMERA TO BE COORDINATED WITH A&S
	CAMERA SETTING OUT TO BE INCLUDED IN SECURITY STRATEGY
	PROJECTION SYSTEM TO BE COORDINATED WITH A&S
	A-20 & A-50 PROJ. SYSTEMS
	ACOUSTIC TILES, FINISHES TO MATCH CEILING COLOUR TFC

CEILING FINISHES	
	ACOUSTIC TILES, FINISHES TO MATCH CEILING COLOUR TFC
	EXISTING LIGHTING TO BE PRESERVED

SPEAKERS	
	PRECAST SPEAKERS
	RECESSED SPEAKERS

BASEMENT SKYLIGHTS	
	PRECAST CONCRETE FRAME FROM BELOW FLOOR OF THE BASEMENT STRUCTURE

SHEET NOTES	
1.	REFER TO CONSTRUCTION DRAWINGS FOR THE LOCATION OF NEW OR EXISTING RECESSED SPEAKERS, LIGHT FIXTURES, TRACK LIGHTING, THE ABOVE, ETC. REFER TO THE DRAWINGS.
2.	VERIFY ALL BEAMS DEPTHS OF FLOORING AGAINST EXISTING, NEW, ABOVE, ETC. REFER TO THE DRAWINGS FOR THE LOCATION OF NEW OR EXISTING RECESSED SPEAKERS, LIGHT FIXTURES, TRACK LIGHTING, THE ABOVE, ETC. REFER TO THE DRAWINGS.
3.	ALL BEAMS DEPTHS SHALL BE VERIFIED BEFORE AND AFTER FINAL FINISHING IS COMPLETED.
4.	ALL BEAMS DEPTHS SHALL BE VERIFIED BEFORE AND AFTER FINAL FINISHING IS COMPLETED.
BEST OF LIGHTING SETTING OUT UNDER MEP CONSULTANT'S LAYOUT LUX LEVELS CALCULATIONS.	
RESTROOMS ALLOW FOR SUSPENDED PLASTERBOARD CEILING TO BE REPAIRED OR NEW IF NECESSARY, AND NEW SPEAKERS AND LIGHTING FITTINGS TO BE DOWNLIGHT FITTING SPEC. TFC.	



Architect: **Elkora Conjaera Creago**

Signature:

Job No: **LB-PB-WORK-18**

Scale: **1:100@A0**

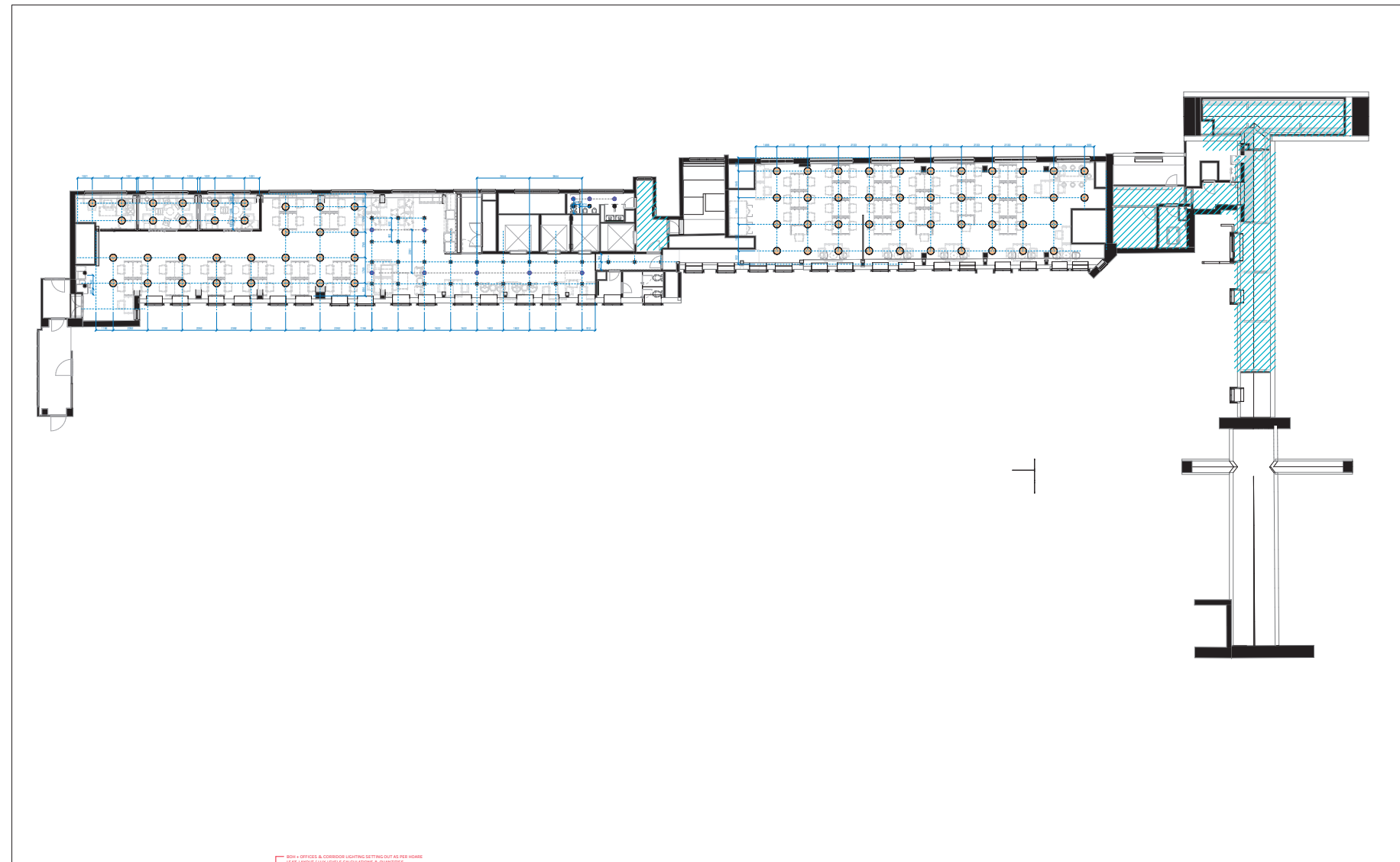
Title: **2ND FLOOR - LIGHTING**

RCP

Sheet: **A-5.0 L02**

Rev. **B**





NOTE: OFFICES & CORRIDOR LIGHTING SETTING OUT AS PER HOME LEX'S LAYOUT / LUX LEVEL CALCULATIONS & QUANTITIES.

CODE	SYMBOL	IMAGE	DESCRIPTION	MANUFACTURER	MODEL	COUNT	PROVIDED BY
F-001			RECESSED OFFICE LIGHTING FIXTURE	OSRAM	ARCTIC	150	CC
F-002			RECESSED OFFICE LIGHTING FIXTURE	OSRAM	ARCTIC	150	CC
F-003			RECESSED OFFICE LIGHTING FIXTURE	OSRAM	ARCTIC	150	CC
F-004			RECESSED OFFICE LIGHTING FIXTURE	OSRAM	ARCTIC	150	CC
F-005			RECESSED OFFICE LIGHTING FIXTURE	OSRAM	ARCTIC	150	CC
F-006			RECESSED OFFICE LIGHTING FIXTURE	OSRAM	ARCTIC	150	CC
F-007			RECESSED OFFICE LIGHTING FIXTURE	OSRAM	ARCTIC	150	CC
F-008			RECESSED OFFICE LIGHTING FIXTURE	OSRAM	ARCTIC	150	CC
F-009			RECESSED OFFICE LIGHTING FIXTURE	OSRAM	ARCTIC	150	CC
F-010			RECESSED OFFICE LIGHTING FIXTURE	OSRAM	ARCTIC	150	CC

CODE	SYMBOL	IMAGE	DESCRIPTION	MANUFACTURER	MODEL	COUNT	PROVIDED BY
F-011			RECESSED OFFICE LIGHTING FIXTURE	OSRAM	ARCTIC	150	CC
F-012			RECESSED OFFICE LIGHTING FIXTURE	OSRAM	ARCTIC	150	CC
F-013			RECESSED OFFICE LIGHTING FIXTURE	OSRAM	ARCTIC	150	CC
F-014			RECESSED OFFICE LIGHTING FIXTURE	OSRAM	ARCTIC	150	CC
F-015			RECESSED OFFICE LIGHTING FIXTURE	OSRAM	ARCTIC	150	CC
F-016			RECESSED OFFICE LIGHTING FIXTURE	OSRAM	ARCTIC	150	CC
F-017			RECESSED OFFICE LIGHTING FIXTURE	OSRAM	ARCTIC	150	CC
F-018			RECESSED OFFICE LIGHTING FIXTURE	OSRAM	ARCTIC	150	CC
F-019			RECESSED OFFICE LIGHTING FIXTURE	OSRAM	ARCTIC	150	CC
F-020			RECESSED OFFICE LIGHTING FIXTURE	OSRAM	ARCTIC	150	CC

### RCP LEGEND

SECURITY CAMERA TO BE COORDINATED WITH A&S

CAMERA SETTING OUT TO BE INCLUDED IN SECURITY STRATEGY

PROVIDER TO BE COORDINATED WITH BLISSPH

A-20 & A-50 PROJ. SYSTEMS

PROVIDER TO BE COORDINATED WITH BLISSPH

SECURITY CAMERA TO BE COORDINATED WITH A&S

SECURITY CAMERA TO BE COORDINATED WITH A&S

### CEILING FINISHES

OPERABLE TO BE PROVIDED TO BE COORDINATED BY W&W

EXISTING LIGHTING TO BE PRESERVED

### SPEAKERS

PROVIDER TO BE COORDINATED WITH BLISSPH

PROVIDER TO BE COORDINATED WITH BLISSPH

### BASEMENT SKYLIGHTS

PROVIDER TO BE COORDINATED WITH BLISSPH

### SHEET NOTES

- REFER TO ENGINEERING DRAWINGS FOR THE LAYOUT OF WHEN INSTALLING RECESSED OFFICE LIGHTING FIXTURES, LIGHT FIXTURES, THE ABOVE, ETC. REFER TO THE LAYOUT.
- VERIFY ALL BEAMS DEPTHS OF FIXTURES AGAINST DISTANCE, SPREAD, ETC. BEFORE PROCEEDING WITH THE ABOVE. VERIFY WITH THE ARCHITECT AND PROVIDER FOR APPROVAL.
- ALL BEAMS MUST BE FULLY INSULATED AND VENTILATED AFTER FINAL FINISHING IS COMPLETE.
- ALL BEAMS MUST BE FULLY INSULATED AND VENTILATED AFTER FINAL FINISHING IS COMPLETE.

BEST OF LIGHTING SETTING OUT UNDER MEP CONSULTANT'S LAYOUT LUX LEVEL CALCULATIONS.

RESTROOMS  
ALLOW FOR SUSPENDED PLASTERBOARD CEILING TO BE REPAIRED OR NEW IF NECESSARY, AND NEW SPRINKLERS AND LIGHTING WITHIN TOILETS DOWNLIGHT FITTING SPEC. ETC.

