

NOTE - OFFICES & CORRIDOR LIGHTING SETTING OUT AS PER HOME LEA'S LAYOUT / LUX LEVELS CALCULATIONS & QUANTITIES.

LIGHTING FIXTURE SCHEDULE							
CODE	SYMBOL	IMAGE	DESCRIPTION	MANUFACTURER	MODEL	COUNT	PROVIDED BY
F-001			RECESSED SQUARE LED DOWNLIGHT	OSRAM	ARCTIC	100	OSRAM
F-002			SURFACE MOUNTED LED DOWNLIGHT	OSRAM	ARCTIC	100	OSRAM
F-003			TRACK LIGHTING FIXTURE	OSRAM	ARCTIC	100	OSRAM
F-004			PENDANT LIGHTING FIXTURE	OSRAM	ARCTIC	100	OSRAM
F-005			CEILING MOUNTED LIGHTING FIXTURE	OSRAM	ARCTIC	100	OSRAM
F-006			RECESSED CIRCULAR LED DOWNLIGHT	OSRAM	ARCTIC	100	OSRAM
F-007			SURFACE MOUNTED CIRCULAR LED DOWNLIGHT	OSRAM	ARCTIC	100	OSRAM
F-008			TRACK LIGHTING FIXTURE WITH ADJUSTABLE ARM	OSRAM	ARCTIC	100	OSRAM
F-009			PENDANT LIGHTING FIXTURE WITH ADJUSTABLE ARM	OSRAM	ARCTIC	100	OSRAM
F-010			CEILING MOUNTED LIGHTING FIXTURE WITH ADJUSTABLE ARM	OSRAM	ARCTIC	100	OSRAM

CODE	SYMBOL	IMAGE	DESCRIPTION	MANUFACTURER	MODEL	COUNT	PROVIDED BY
F-011			RECESSED SQUARE LED DOWNLIGHT	OSRAM	ARCTIC	100	OSRAM
F-012			SURFACE MOUNTED LED DOWNLIGHT	OSRAM	ARCTIC	100	OSRAM
F-013			TRACK LIGHTING FIXTURE	OSRAM	ARCTIC	100	OSRAM
F-014			PENDANT LIGHTING FIXTURE	OSRAM	ARCTIC	100	OSRAM
F-015			CEILING MOUNTED LIGHTING FIXTURE	OSRAM	ARCTIC	100	OSRAM
F-016			RECESSED CIRCULAR LED DOWNLIGHT	OSRAM	ARCTIC	100	OSRAM
F-017			SURFACE MOUNTED CIRCULAR LED DOWNLIGHT	OSRAM	ARCTIC	100	OSRAM
F-018			TRACK LIGHTING FIXTURE WITH ADJUSTABLE ARM	OSRAM	ARCTIC	100	OSRAM
F-019			PENDANT LIGHTING FIXTURE WITH ADJUSTABLE ARM	OSRAM	ARCTIC	100	OSRAM
F-020			CEILING MOUNTED LIGHTING FIXTURE WITH ADJUSTABLE ARM	OSRAM	ARCTIC	100	OSRAM

RCP LEGEND	
	SECURITY CAMERA, TO BE COORDINATED WITH A&S
	CAMERA SETTING OUT TO BE INCLUDED IN SECURITY STRATEGY
	PROJECTION CAMERA, TO BE COORDINATED WITH A&S
	A-20 & A-50 PROJ. SYSTEMS
	ACOUSTIC TILES, FINISHED TO MATCH CEILING COLOUR TFC

CEILING FINISHES	
	SUSPENDED CEILING TO BE FINISHED TO BE COORDINATED WITH RCP
	EXISTING LIGHTING TO BE PRESERVED

SPEAKERS	
	PRECAST SPEAKERS
	RECESSED SPEAKERS
	SPEAKER NUMBER & LOCATION ACCORDING TO A&S CONSULTANT STRATEGY

BASEMENT SKYLIGHTS	
	PRECAST CONCRETE FINISHED BASEMENT SKYLIGHTS TO BE COORDINATED WITH RCP

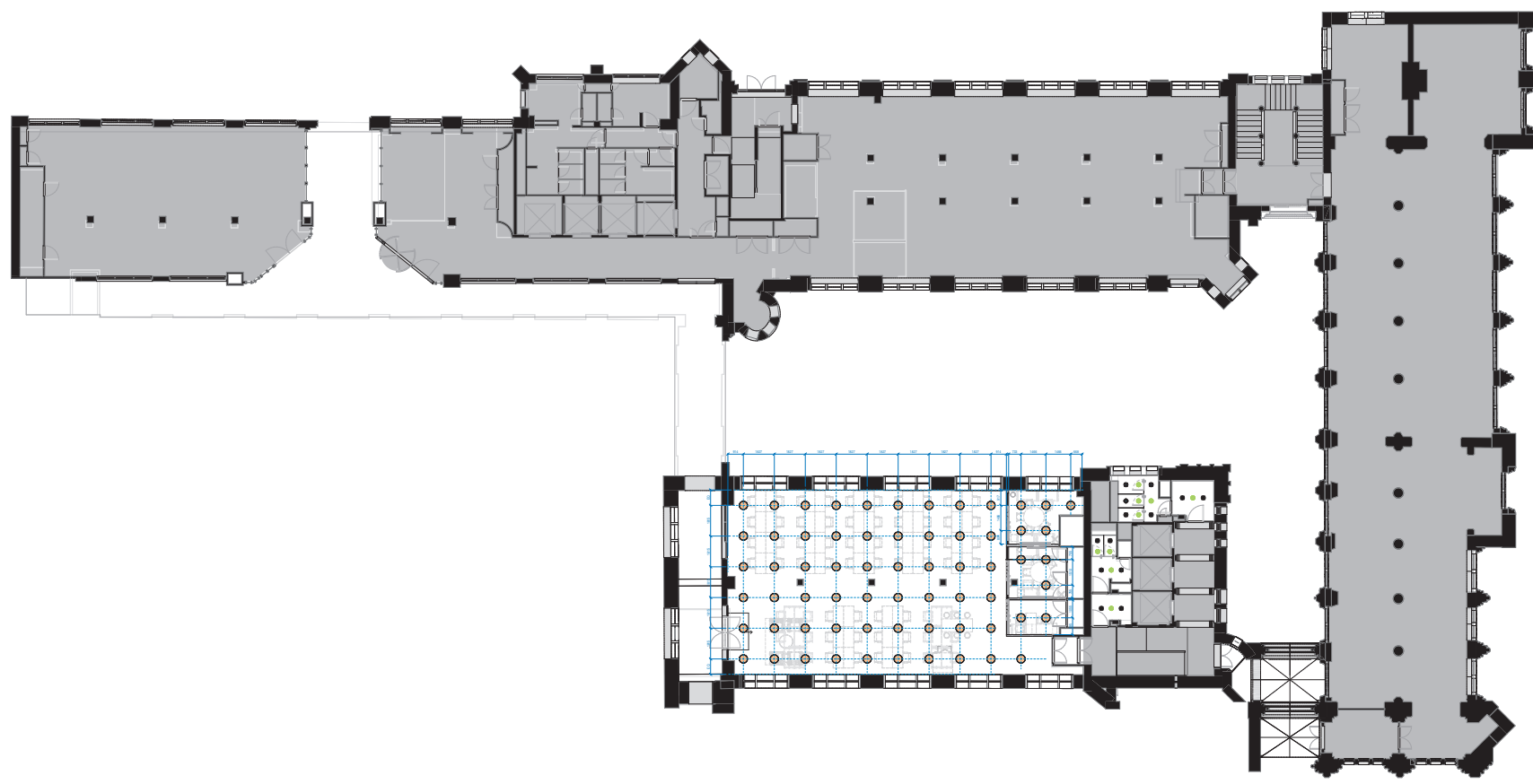
SHEET NOTES	
1.	VERIFY ALL DIMENSIONS OF EXISTING CEILING, CORES OF WORK OR EXISTING RECESSED SPEAKERS, LIGHT FIXTURES, TRAYS, ETC. AND VERIFY TO BE COORDINATED WITH RCP.
2.	VERIFY ALL DIMENSIONS OF EXISTING RECESSED DOWNLIGHTS, RECESSED SPEAKERS, ETC. AND VERIFY TO BE COORDINATED WITH RCP.
3.	ALL RECESSED SPEAKERS SHALL BE FINISHED TO MATCH CEILING FINISHES TO BE COORDINATED WITH RCP.
4.	ALL RECESSED SPEAKERS SHALL BE FINISHED TO MATCH CEILING FINISHES TO BE COORDINATED WITH RCP.
BEST OF LIGHTING SETTING OUT UNDER MEP CONSULTANT'S LAYOUT LUX LEVELS CALCULATIONS.	
RESTROOMS: ALLOW FOR SUSPENDED PLASTERBOARD CEILING TO BE REFINISHED OR NEW IF NECESSARY, AND NEW SPEAKERS AND LIGHTING WITHIN THE DOWNLIGHT FITTING SPEC. TFC.	



Architect: **Elvira Conajero Crespo**

Signature: \_\_\_\_\_

**DRAFT**



NOTE: OFFICES & CORRIDOR LIGHTING SETTING OUT AS PER HOME LEAS LAYOUT/ LUX LEVELS CALCULATIONS & QUANTITIES.

B ISSUE FOR CONSTRUCTION - FULL PACK 18/07/16  
A ISSUE FOR TENDER 18/06/19

Rev. Description Date

LIGHTING FIXTURE SCHEDULE															
CODE	SYMBOL	IMAGE	DESCRIPTION	MANUFACTURER	MODEL	COUNT	PROVIDED BY	CODE	SYMBOL	IMAGE	DESCRIPTION	MANUFACTURER	MODEL	COUNT	PROVIDED BY
F-001	[Symbol]	[Image]	RECESSED SPOT LIGHTING - 10W	OSRAM	ARCTIC	100	OSRAM	F-001	[Symbol]	[Image]	RECESSED SPOT LIGHTING - 10W	OSRAM	ARCTIC	100	OSRAM
F-002	[Symbol]	[Image]	RECESSED SPOT LIGHTING - 10W	OSRAM	ARCTIC	100	OSRAM	F-002	[Symbol]	[Image]	RECESSED SPOT LIGHTING - 10W	OSRAM	ARCTIC	100	OSRAM
F-003	[Symbol]	[Image]	RECESSED SPOT LIGHTING - 10W	OSRAM	ARCTIC	100	OSRAM	F-003	[Symbol]	[Image]	RECESSED SPOT LIGHTING - 10W	OSRAM	ARCTIC	100	OSRAM
F-004	[Symbol]	[Image]	RECESSED SPOT LIGHTING - 10W	OSRAM	ARCTIC	100	OSRAM	F-004	[Symbol]	[Image]	RECESSED SPOT LIGHTING - 10W	OSRAM	ARCTIC	100	OSRAM
F-005	[Symbol]	[Image]	RECESSED SPOT LIGHTING - 10W	OSRAM	ARCTIC	100	OSRAM	F-005	[Symbol]	[Image]	RECESSED SPOT LIGHTING - 10W	OSRAM	ARCTIC	100	OSRAM
F-006	[Symbol]	[Image]	RECESSED SPOT LIGHTING - 10W	OSRAM	ARCTIC	100	OSRAM	F-006	[Symbol]	[Image]	RECESSED SPOT LIGHTING - 10W	OSRAM	ARCTIC	100	OSRAM
F-007	[Symbol]	[Image]	RECESSED SPOT LIGHTING - 10W	OSRAM	ARCTIC	100	OSRAM	F-007	[Symbol]	[Image]	RECESSED SPOT LIGHTING - 10W	OSRAM	ARCTIC	100	OSRAM
F-008	[Symbol]	[Image]	RECESSED SPOT LIGHTING - 10W	OSRAM	ARCTIC	100	OSRAM	F-008	[Symbol]	[Image]	RECESSED SPOT LIGHTING - 10W	OSRAM	ARCTIC	100	OSRAM
F-009	[Symbol]	[Image]	RECESSED SPOT LIGHTING - 10W	OSRAM	ARCTIC	100	OSRAM	F-009	[Symbol]	[Image]	RECESSED SPOT LIGHTING - 10W	OSRAM	ARCTIC	100	OSRAM
F-010	[Symbol]	[Image]	RECESSED SPOT LIGHTING - 10W	OSRAM	ARCTIC	100	OSRAM	F-010	[Symbol]	[Image]	RECESSED SPOT LIGHTING - 10W	OSRAM	ARCTIC	100	OSRAM

RCP LEGEND	
[Symbol]	SECURITY CAMERA TO BE COORDINATED WITH A&S
[Symbol]	CAMERA SETTING OUT TO BE INCLUDED IN SECURITY STRATEGY
[Symbol]	PROJECTION TO BE COORDINATED WITH BLINDING
[Symbol]	A-20 & A-50 PROJ. SYSTEMS
[Symbol]	PROJECTION MOUNTS TO BE COORDINATED WITH BLINDING
[Symbol]	ACOUSTIC TRILLUS POINTS TO MATCH CEILING COLOUR T/C

CEILING FINISHES	
[Symbol]	SPEAKERS TO BE PROVIDED TO BE COORDINATED WITH RCP
[Symbol]	EXISTING LIGHTING TO BE PRESERVED

SPEAKERS	
[Symbol]	PROVIDED SPEAKERS
[Symbol]	RECESSED SPEAKERS
[Symbol]	SPEAKERS NUMBER & LOCATION ACCORDING TO AV CONSULTANT STRATEGY

BASEMENT SKYLIGHTS	
[Symbol]	PROVIDED SKYLIGHTS FROM BELOW TO BE COORDINATED WITH RCP

SHEET NOTES	
1.	REFER TO CONSTRUCTION DRAWINGS FOR SPECIFIC TYPES OF WORK OR MATERIALS. REFER TO SPECIFICATIONS, LIGHT FIXTURES, THE A&S, ETC. TO BE COORDINATED WITH RCP.
2.	VERIFY ALL BEARING CAPACITY OF FIXTURES AGAINST EXISTING FLOOR SLABS, ETC. BEFORE PROCEEDING WITH WORK. VERIFY DIMENSIONS AND LOCATIONS OF ALL FIXTURES TO ARCHITECT AND INSTANT FOR APPROVAL.
3.	ALL WORKING DRAWINGS SHALL BE CHECKED AND REVISED AFTER FINAL FIXTURES IS COMPLETED.
4.	ALL BEARING CAPACITY LOADS, MATERIALS, ETC. ARE TO BE PROVIDED BY THE CONSULTANT TEAM OF THE WORK.
BEST OF LIGHTING SETTING OUT UNDER MEP CONSULTANT'S LAYOUT LUX LEVELS CALCULATIONS.	
RESTROOMS: ALLOW FOR SUSPENDED PLASTERBOARD CEILING TO BE REPAIRED OR NEW IF NECESSARY, AND NEW SPEAKERS AND LIGHTING WITHIN THE RESTROOMS FITTING SPEC. T/C.	

**labit group**  
Avda. de America 52 | E-48940 Leizorua  
47 28020 Madrid | T: +34 915 103 033

Architect: **Elvira Conajero Crespo**

Signature: \_\_\_\_\_

Job No.: **LB-PB-wework-18**  
Scale: **1:100@A0**  
Title: **GRND FLOOR - LIGHTING RCP**  
Sheet: **A-5.0 L00** Rev. **B**

