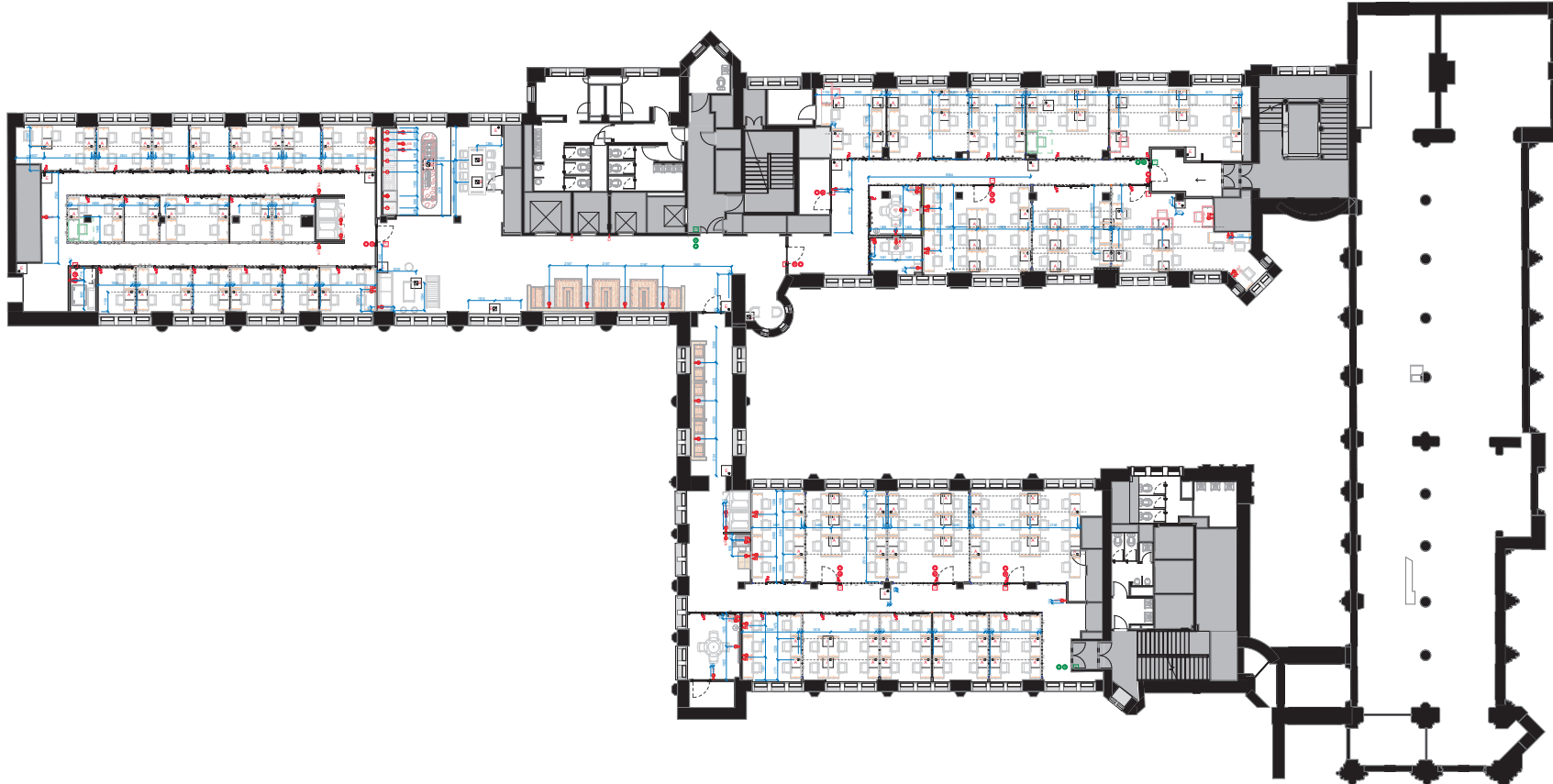


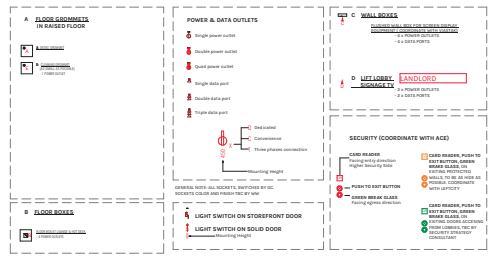
POWER & DATA LEGEND	TV WALLBOX	TYPICAL GROMMETS/FLOOR BOXES SETTING OUT	KEYNOTES	SHEET NOTES
<p><b>A FLOOR GROMMETS IN RAISED FLOOR</b></p> <p><b>B FLOOR BOXES</b></p> <p><b>C WALL BOXES</b></p> <p><b>D MITLORELL LANDLORD</b></p> <p><b>SECURITY (COORDINATE WITH ACE)</b></p> <p><b>POWER &amp; DATA OUTLETS</b></p> <p><b>LIGHT SWITCH ON STIFFER FRONT DOOR</b></p>	<p><b>TV DISPLAY 43"</b></p> <p><b>TV DISPLAY 48"</b></p> <p><b>TV DISPLAY 65"</b></p> <p><b>PLEASE EXTRACT EVERYTHING RELATED TO THESE WALLBOXES AND RELEASE ON THE STANDARDS. EXACT SIZES BY DRAWING.</b></p>	<p><b>GROMMET POSITION</b></p> <p><b>TYPICAL FLOOR BOX CUT OUT ARRANGEMENT</b></p> <p>- STANDARD SET OUT IS SET BY 70MM FROM ADJACENT EDGES OF TILE AND ROTATED TO SUIT FLAM LOCATION - ALTERNATIVE SET OUT IS SET BY 25MM FROM EDGE AND CENTER IN THE OTHER ORIENTATION</p> <p><b>TYPICAL GROMMET CUT OUT ARRANGEMENT</b></p> <p>- STANDARD SET OUT IS SET BY 25MM FROM ADJACENT EDGES OF TILE AND ROTATED TO SUIT FLAM LOCATION - ALTERNATIVE SET OUT IS SET BY 25MM FROM EDGE AND CENTER IN THE OTHER ORIENTATION</p> <p><b>PARTITION LEGEND</b></p>	<p><b>A-4.0 - KEYNOTE POWER AND DATA</b></p>	<p><b>SHEET NOTES</b></p> <p>1. REFER TO ENDUSER'S &amp; CONSULTANT DRAWINGS FOR ALL ROOMS INCLUDING QUANTITIES, SPECIFICATIONS &amp; MATERIALS TO BE USED. ALL CONSULTANTS TO BE USED. ALL ROOMS TO BE USED. ALL ROOMS TO BE USED.</p> <p>2. REFER TO ENDUSER'S &amp; CONSULTANT DRAWINGS FOR ALL ROOMS INCLUDING QUANTITIES, SPECIFICATIONS &amp; MATERIALS TO BE USED. ALL CONSULTANTS TO BE USED. ALL ROOMS TO BE USED.</p> <p>3. REFER TO ENDUSER'S &amp; CONSULTANT DRAWINGS FOR ALL ROOMS INCLUDING QUANTITIES, SPECIFICATIONS &amp; MATERIALS TO BE USED. ALL CONSULTANTS TO BE USED. ALL ROOMS TO BE USED.</p> <p>4. REFER TO ENDUSER'S &amp; CONSULTANT DRAWINGS FOR ALL ROOMS INCLUDING QUANTITIES, SPECIFICATIONS &amp; MATERIALS TO BE USED. ALL CONSULTANTS TO BE USED. ALL ROOMS TO BE USED.</p> <p>5. REFER TO ENDUSER'S &amp; CONSULTANT DRAWINGS FOR ALL ROOMS INCLUDING QUANTITIES, SPECIFICATIONS &amp; MATERIALS TO BE USED. ALL CONSULTANTS TO BE USED. ALL ROOMS TO BE USED.</p> <p>6. REFER TO ENDUSER'S &amp; CONSULTANT DRAWINGS FOR ALL ROOMS INCLUDING QUANTITIES, SPECIFICATIONS &amp; MATERIALS TO BE USED. ALL CONSULTANTS TO BE USED. ALL ROOMS TO BE USED.</p> <p>7. REFER TO ENDUSER'S &amp; CONSULTANT DRAWINGS FOR ALL ROOMS INCLUDING QUANTITIES, SPECIFICATIONS &amp; MATERIALS TO BE USED. ALL CONSULTANTS TO BE USED. ALL ROOMS TO BE USED.</p> <p>8. REFER TO ENDUSER'S &amp; CONSULTANT DRAWINGS FOR ALL ROOMS INCLUDING QUANTITIES, SPECIFICATIONS &amp; MATERIALS TO BE USED. ALL CONSULTANTS TO BE USED. ALL ROOMS TO BE USED.</p> <p>9. REFER TO ENDUSER'S &amp; CONSULTANT DRAWINGS FOR ALL ROOMS INCLUDING QUANTITIES, SPECIFICATIONS &amp; MATERIALS TO BE USED. ALL CONSULTANTS TO BE USED. ALL ROOMS TO BE USED.</p> <p>10. REFER TO ENDUSER'S &amp; CONSULTANT DRAWINGS FOR ALL ROOMS INCLUDING QUANTITIES, SPECIFICATIONS &amp; MATERIALS TO BE USED. ALL CONSULTANTS TO BE USED. ALL ROOMS TO BE USED.</p> <p>11. EXACT POSITION OF FLOOR GROMMETS TO BE COORDINATED WITH BASED FLOOR SETTING OUT. DIMENSIONS ARE LEFT TO BE MADE.</p> <p>12. PLEASE NOTE SOME GROMMETS ARE TO MATCH GHOSTED FURNITURE FOR ALTERNATIVE ORIENTATION.</p>



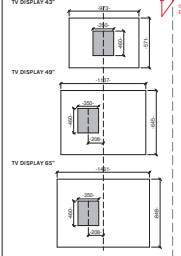




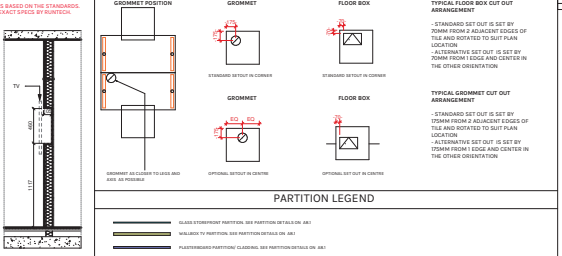
**POWER & DATA LEGEND**



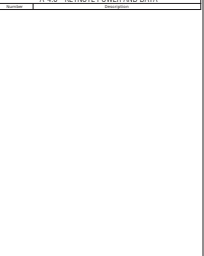
**TV WALLBOX**



**TYPICAL GROGNETS/FLOOR BOXES SETTING OUT**



**KEYNOTES**



**SHEET NOTES**

1. REFER TO SPECIFICATION & CONSULT DRAWINGS FOR ALL NOTES INCLUDING QUANTITIES, SPECIFICATION & DIMENSIONS AND SETTING OUT. ALL DIMENSIONS UNLESS OTHERWISE SPECIFIED ARE IN METERS.  
2. ALL SETTING OUT DIMENSIONS SHALL HAVE BEEN CHECKED AND APPROVED FOR CONSTRUCTION BY THE ARCHITECT'S REPRESENTATIVE. ALL DIMENSIONS SHALL BE GIVEN TO THE CONTRACTOR BY THE ARCHITECT'S REPRESENTATIVE.  
3. ALL SETTING OUT DIMENSIONS SHALL BE GIVEN TO THE CONTRACTOR BY THE ARCHITECT'S REPRESENTATIVE.  
4. ALL SETTING OUT DIMENSIONS SHALL BE GIVEN TO THE CONTRACTOR BY THE ARCHITECT'S REPRESENTATIVE.  
5. ALL SETTING OUT DIMENSIONS SHALL BE GIVEN TO THE CONTRACTOR BY THE ARCHITECT'S REPRESENTATIVE.  
6. ALL SETTING OUT DIMENSIONS SHALL BE GIVEN TO THE CONTRACTOR BY THE ARCHITECT'S REPRESENTATIVE.  
7. ALL SETTING OUT DIMENSIONS SHALL BE GIVEN TO THE CONTRACTOR BY THE ARCHITECT'S REPRESENTATIVE.  
8. ALL SETTING OUT DIMENSIONS SHALL BE GIVEN TO THE CONTRACTOR BY THE ARCHITECT'S REPRESENTATIVE.  
9. ALL SETTING OUT DIMENSIONS SHALL BE GIVEN TO THE CONTRACTOR BY THE ARCHITECT'S REPRESENTATIVE.  
10. ALL SETTING OUT DIMENSIONS SHALL BE GIVEN TO THE CONTRACTOR BY THE ARCHITECT'S REPRESENTATIVE.  
11. ALL SETTING OUT DIMENSIONS SHALL BE GIVEN TO THE CONTRACTOR BY THE ARCHITECT'S REPRESENTATIVE.  
12. ALL SETTING OUT DIMENSIONS SHALL BE GIVEN TO THE CONTRACTOR BY THE ARCHITECT'S REPRESENTATIVE.  
13. ALL SETTING OUT DIMENSIONS SHALL BE GIVEN TO THE CONTRACTOR BY THE ARCHITECT'S REPRESENTATIVE.  
14. ALL SETTING OUT DIMENSIONS SHALL BE GIVEN TO THE CONTRACTOR BY THE ARCHITECT'S REPRESENTATIVE.  
15. ALL SETTING OUT DIMENSIONS SHALL BE GIVEN TO THE CONTRACTOR BY THE ARCHITECT'S REPRESENTATIVE.  
16. ALL SETTING OUT DIMENSIONS SHALL BE GIVEN TO THE CONTRACTOR BY THE ARCHITECT'S REPRESENTATIVE.  
17. ALL SETTING OUT DIMENSIONS SHALL BE GIVEN TO THE CONTRACTOR BY THE ARCHITECT'S REPRESENTATIVE.  
18. ALL SETTING OUT DIMENSIONS SHALL BE GIVEN TO THE CONTRACTOR BY THE ARCHITECT'S REPRESENTATIVE.  
19. ALL SETTING OUT DIMENSIONS SHALL BE GIVEN TO THE CONTRACTOR BY THE ARCHITECT'S REPRESENTATIVE.  
20. ALL SETTING OUT DIMENSIONS SHALL BE GIVEN TO THE CONTRACTOR BY THE ARCHITECT'S REPRESENTATIVE.