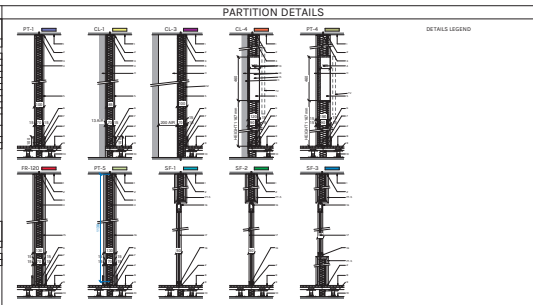


PARTITIONS SCHEDULE
A-3.0 _ PLASTERBOARD PARTITION SCHEDULE (UK)

NO.	TYPE	DESCRIPTION	MAX HT	MODEL	REL.	MANUFACTURER
001	01	PLASTERBOARD PARTITION	2400	01	01	01
002	02	PLASTERBOARD PARTITION WITH DOOR	2400	02	01	01
003	03	PLASTERBOARD PARTITION WITH DOOR AND WINDOW	2400	03	01	01
004	04	PLASTERBOARD PARTITION WITH DOOR AND WINDOW AND DOOR	2400	04	01	01
005	05	PLASTERBOARD PARTITION WITH DOOR AND WINDOW AND DOOR AND WINDOW	2400	05	01	01
006	06	PLASTERBOARD PARTITION WITH DOOR AND WINDOW AND DOOR AND WINDOW AND DOOR	2400	06	01	01
007	07	PLASTERBOARD PARTITION WITH DOOR AND WINDOW AND DOOR AND WINDOW AND DOOR AND WINDOW	2400	07	01	01
008	08	PLASTERBOARD PARTITION WITH DOOR AND WINDOW AND DOOR AND WINDOW AND DOOR AND WINDOW AND DOOR	2400	08	01	01
009	09	PLASTERBOARD PARTITION WITH DOOR AND WINDOW AND DOOR AND WINDOW AND DOOR AND WINDOW AND DOOR AND WINDOW	2400	09	01	01
010	10	PLASTERBOARD PARTITION WITH DOOR AND WINDOW AND DOOR AND WINDOW AND DOOR AND WINDOW AND DOOR AND WINDOW AND DOOR	2400	10	01	01
011	11	PLASTERBOARD PARTITION WITH DOOR AND WINDOW AND DOOR AND WINDOW AND DOOR AND WINDOW AND DOOR AND WINDOW AND DOOR AND WINDOW	2400	11	01	01
012	12	PLASTERBOARD PARTITION WITH DOOR AND WINDOW AND DOOR AND WINDOW AND DOOR AND WINDOW AND DOOR AND WINDOW AND DOOR AND WINDOW AND DOOR	2400	12	01	01
013	13	PLASTERBOARD PARTITION WITH DOOR AND WINDOW AND DOOR AND WINDOW AND DOOR AND WINDOW AND DOOR AND WINDOW AND DOOR AND WINDOW AND DOOR AND WINDOW	2400	13	01	01
014	14	PLASTERBOARD PARTITION WITH DOOR AND WINDOW AND DOOR AND WINDOW AND DOOR AND WINDOW AND DOOR AND WINDOW AND DOOR AND WINDOW AND DOOR AND WINDOW AND DOOR	2400	14	01	01
015	15	PLASTERBOARD PARTITION WITH DOOR AND WINDOW AND DOOR AND WINDOW AND DOOR AND WINDOW AND DOOR AND WINDOW AND DOOR AND WINDOW AND DOOR AND WINDOW AND DOOR AND WINDOW	2400	15	01	01
016	16	PLASTERBOARD PARTITION WITH DOOR AND WINDOW AND DOOR AND WINDOW AND DOOR AND WINDOW AND DOOR AND WINDOW AND DOOR AND WINDOW AND DOOR AND WINDOW AND DOOR AND WINDOW AND DOOR	2400	16	01	01
017	17	PLASTERBOARD PARTITION WITH DOOR AND WINDOW AND DOOR AND WINDOW AND DOOR AND WINDOW AND DOOR AND WINDOW AND DOOR AND WINDOW AND DOOR AND WINDOW AND DOOR AND WINDOW AND DOOR AND WINDOW	2400	17	01	01
018	18	PLASTERBOARD PARTITION WITH DOOR AND WINDOW AND DOOR AND WINDOW AND DOOR AND WINDOW AND DOOR AND WINDOW AND DOOR AND WINDOW AND DOOR AND WINDOW AND DOOR AND WINDOW AND DOOR AND WINDOW AND DOOR	2400	18	01	01
019	19	PLASTERBOARD PARTITION WITH DOOR AND WINDOW AND DOOR AND WINDOW AND DOOR AND WINDOW AND DOOR AND WINDOW AND DOOR AND WINDOW AND DOOR AND WINDOW AND DOOR AND WINDOW AND DOOR AND WINDOW AND DOOR AND WINDOW	2400	19	01	01
020	20	PLASTERBOARD PARTITION WITH DOOR AND WINDOW AND DOOR AND WINDOW AND DOOR AND WINDOW AND DOOR AND WINDOW AND DOOR AND WINDOW AND DOOR AND WINDOW AND DOOR AND WINDOW AND DOOR AND WINDOW AND DOOR AND WINDOW AND DOOR	2400	20	01	01
021	21	PLASTERBOARD PARTITION WITH DOOR AND WINDOW AND DOOR AND WINDOW AND DOOR AND WINDOW AND DOOR AND WINDOW AND DOOR AND WINDOW AND DOOR AND WINDOW AND DOOR AND WINDOW AND DOOR AND WINDOW AND DOOR AND WINDOW AND DOOR AND WINDOW	2400	21	01	01
022	22	PLASTERBOARD PARTITION WITH DOOR AND WINDOW AND DOOR AND WINDOW AND DOOR AND WINDOW AND DOOR AND WINDOW AND DOOR AND WINDOW AND DOOR AND WINDOW AND DOOR AND WINDOW AND DOOR AND WINDOW AND DOOR AND WINDOW AND DOOR AND WINDOW AND DOOR	2400	22	01	01
023	23	PLASTERBOARD PARTITION WITH DOOR AND WINDOW AND DOOR AND WINDOW AND DOOR AND WINDOW AND DOOR AND WINDOW AND DOOR AND WINDOW AND DOOR AND WINDOW AND DOOR AND WINDOW AND DOOR AND WINDOW AND DOOR AND WINDOW AND DOOR AND WINDOW AND DOOR AND WINDOW	2400	23	01	01
024	24	PLASTERBOARD PARTITION WITH DOOR AND WINDOW AND DOOR AND WINDOW AND DOOR AND WINDOW AND DOOR AND WINDOW AND DOOR AND WINDOW AND DOOR AND WINDOW AND DOOR AND WINDOW AND DOOR AND WINDOW AND DOOR AND WINDOW AND DOOR AND WINDOW AND DOOR AND WINDOW AND DOOR	2400	24	01	01
025	25	PLASTERBOARD PARTITION WITH DOOR AND WINDOW AND DOOR AND WINDOW AND DOOR AND WINDOW AND DOOR AND WINDOW AND DOOR AND WINDOW AND DOOR AND WINDOW AND DOOR AND WINDOW AND DOOR AND WINDOW AND DOOR AND WINDOW AND DOOR AND WINDOW AND DOOR AND WINDOW AND DOOR AND WINDOW	2400	25	01	01
026	26	PLASTERBOARD PARTITION WITH DOOR AND WINDOW AND DOOR AND WINDOW AND DOOR AND WINDOW AND DOOR AND WINDOW AND DOOR AND WINDOW AND DOOR AND WINDOW AND DOOR AND WINDOW AND DOOR AND WINDOW AND DOOR AND WINDOW AND DOOR AND WINDOW AND DOOR AND WINDOW AND DOOR AND WINDOW AND DOOR	2400	26	01	01
027	27	PLASTERBOARD PARTITION WITH DOOR AND WINDOW AND DOOR AND WINDOW AND DOOR AND WINDOW AND DOOR AND WINDOW AND DOOR AND WINDOW AND DOOR AND WINDOW AND DOOR AND WINDOW AND DOOR AND WINDOW AND DOOR AND WINDOW AND DOOR AND WINDOW AND DOOR AND WINDOW AND DOOR AND WINDOW AND DOOR AND WINDOW	2400	27	01	01
028	28	PLASTERBOARD PARTITION WITH DOOR AND WINDOW AND DOOR AND WINDOW AND DOOR AND WINDOW AND DOOR AND WINDOW AND DOOR AND WINDOW AND DOOR AND WINDOW AND DOOR AND WINDOW AND DOOR AND WINDOW AND DOOR AND WINDOW AND DOOR AND WINDOW AND DOOR AND WINDOW AND DOOR AND WINDOW AND DOOR AND WINDOW AND DOOR	2400	28	01	01
029	29	PLASTERBOARD PARTITION WITH DOOR AND WINDOW AND DOOR AND WINDOW AND DOOR AND WINDOW AND DOOR AND WINDOW AND DOOR AND WINDOW AND DOOR AND WINDOW AND DOOR AND WINDOW AND DOOR AND WINDOW AND DOOR AND WINDOW AND DOOR AND WINDOW AND DOOR AND WINDOW AND DOOR AND WINDOW AND DOOR AND WINDOW AND DOOR AND WINDOW	2400	29	01	01
030	30	PLASTERBOARD PARTITION WITH DOOR AND WINDOW AND DOOR AND WINDOW AND DOOR AND WINDOW AND DOOR AND WINDOW AND DOOR AND WINDOW AND DOOR AND WINDOW AND DOOR AND WINDOW AND DOOR AND WINDOW AND DOOR AND WINDOW AND DOOR AND WINDOW AND DOOR AND WINDOW AND DOOR AND WINDOW AND DOOR AND WINDOW AND DOOR AND WINDOW AND DOOR	2400	30	01	01

A-3.0 _ STOREFRONT PARTITION SCHEDULE

NO.	TYPE	DESCRIPTION	MAX HT	MODEL	REL.	MANUFACTURER
001	01	STOREFRONT PARTITION	2400	01	01	01
002	02	STOREFRONT PARTITION WITH DOOR	2400	02	01	01
003	03	STOREFRONT PARTITION WITH DOOR AND WINDOW	2400	03	01	01
004	04	STOREFRONT PARTITION WITH DOOR AND WINDOW AND DOOR	2400	04	01	01
005	05	STOREFRONT PARTITION WITH DOOR AND WINDOW AND DOOR AND WINDOW	2400	05	01	01

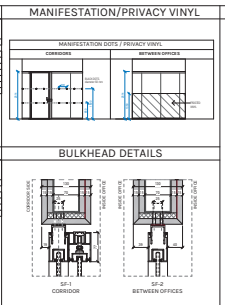


DOOR SCHEDULE (BY GC)
A-3.0 _ DOOR TYPE TOTALS SCHEDULE - BY GENERAL CONTRACTOR

NO.	TYPE	DESCRIPTION	MAX HT	MODEL	REL.	MANUFACTURER
001	01	DOOR TYPE TOTALS	2400	01	01	01
002	02	DOOR TYPE TOTALS WITH DOOR	2400	02	01	01
003	03	DOOR TYPE TOTALS WITH DOOR AND WINDOW	2400	03	01	01
004	04	DOOR TYPE TOTALS WITH DOOR AND WINDOW AND DOOR	2400	04	01	01
005	05	DOOR TYPE TOTALS WITH DOOR AND WINDOW AND DOOR AND WINDOW	2400	05	01	01

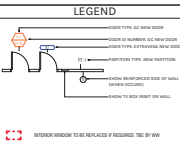
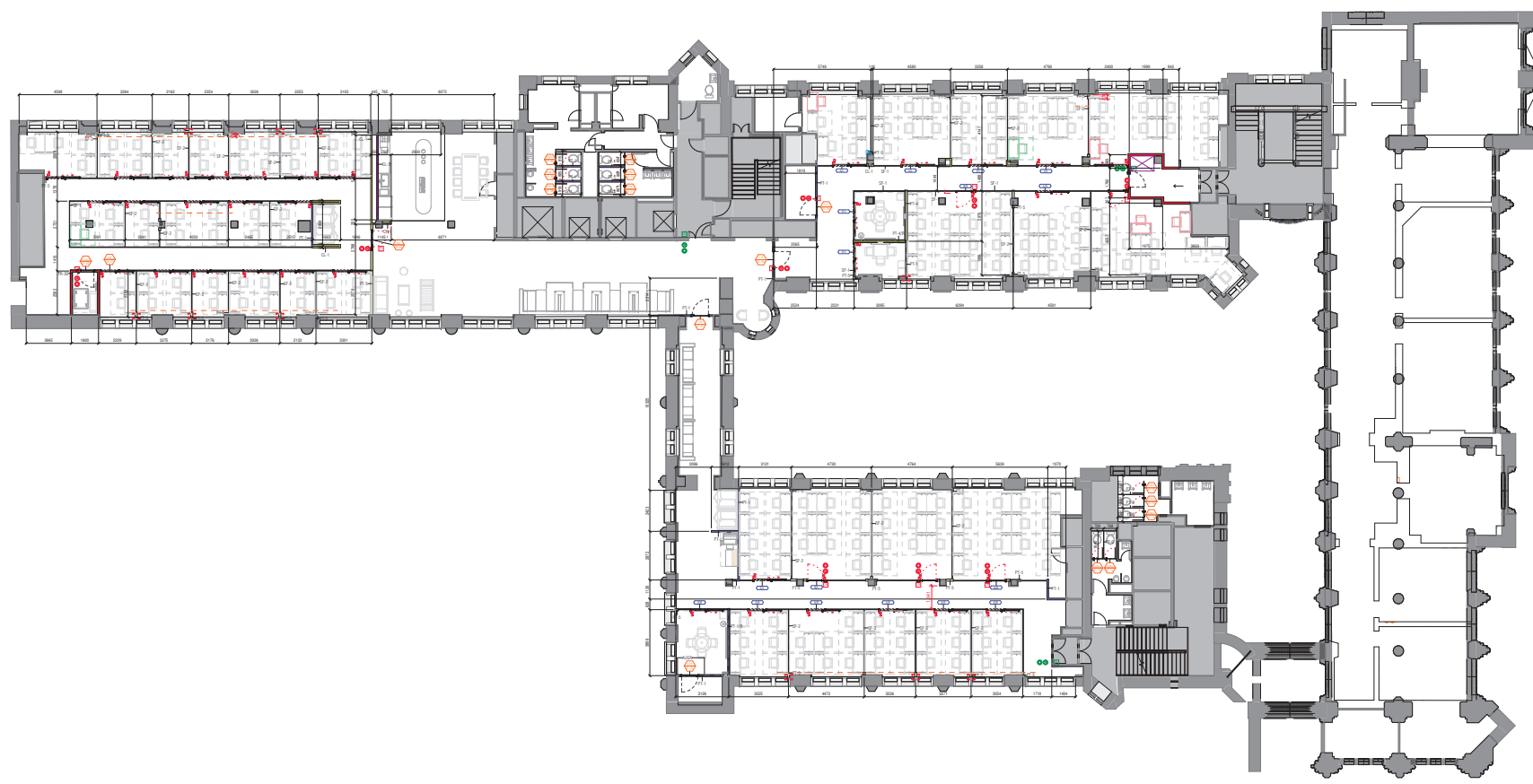
DOOR SCHEDULE (BY EXTRAVEGA)
A-3.0 _ DOOR TYPE SCHEDULE - BY EXTRAVEGA

NO.	TYPE	DESCRIPTION	MAX HT	MODEL	REL.	MANUFACTURER
001	01	DOOR TYPE SCHEDULE	2400	01	01	01
002	02	DOOR TYPE SCHEDULE WITH DOOR	2400	02	01	01
003	03	DOOR TYPE SCHEDULE WITH DOOR AND WINDOW	2400	03	01	01
004	04	DOOR TYPE SCHEDULE WITH DOOR AND WINDOW AND DOOR	2400	04	01	01
005	05	DOOR TYPE SCHEDULE WITH DOOR AND WINDOW AND DOOR AND WINDOW	2400	05	01	01



SHEET NOTES

1. MAIN CONTRACTOR SHALL VERIFY FOR THE APPLICABLE APPROVALS AND ASSESSMENTS AND PROVIDE THE NECESSARY APPROVALS AND ASSESSMENTS FOR THE PARTITIONS AND DOORS TO BE INSTALLED IN THIS PROJECT. THE CONTRACTOR SHALL BE RESPONSIBLE FOR OBTAINING THE NECESSARY APPROVALS AND ASSESSMENTS FROM THE LOCAL AUTHORITIES AND THE CLIENT.
2. THE CONTRACTOR SHALL BE RESPONSIBLE FOR OBTAINING THE NECESSARY APPROVALS AND ASSESSMENTS FROM THE LOCAL AUTHORITIES AND THE CLIENT. THE CONTRACTOR SHALL BE RESPONSIBLE FOR OBTAINING THE NECESSARY APPROVALS AND ASSESSMENTS FROM THE LOCAL AUTHORITIES AND THE CLIENT.
3. THE CONTRACTOR SHALL BE RESPONSIBLE FOR OBTAINING THE NECESSARY APPROVALS AND ASSESSMENTS FROM THE LOCAL AUTHORITIES AND THE CLIENT. THE CONTRACTOR SHALL BE RESPONSIBLE FOR OBTAINING THE NECESSARY APPROVALS AND ASSESSMENTS FROM THE LOCAL AUTHORITIES AND THE CLIENT.
4. THE CONTRACTOR SHALL BE RESPONSIBLE FOR OBTAINING THE NECESSARY APPROVALS AND ASSESSMENTS FROM THE LOCAL AUTHORITIES AND THE CLIENT. THE CONTRACTOR SHALL BE RESPONSIBLE FOR OBTAINING THE NECESSARY APPROVALS AND ASSESSMENTS FROM THE LOCAL AUTHORITIES AND THE CLIENT.
5. THE CONTRACTOR SHALL BE RESPONSIBLE FOR OBTAINING THE NECESSARY APPROVALS AND ASSESSMENTS FROM THE LOCAL AUTHORITIES AND THE CLIENT. THE CONTRACTOR SHALL BE RESPONSIBLE FOR OBTAINING THE NECESSARY APPROVALS AND ASSESSMENTS FROM THE LOCAL AUTHORITIES AND THE CLIENT.
6. THE CONTRACTOR SHALL BE RESPONSIBLE FOR OBTAINING THE NECESSARY APPROVALS AND ASSESSMENTS FROM THE LOCAL AUTHORITIES AND THE CLIENT. THE CONTRACTOR SHALL BE RESPONSIBLE FOR OBTAINING THE NECESSARY APPROVALS AND ASSESSMENTS FROM THE LOCAL AUTHORITIES AND THE CLIENT.
7. THE CONTRACTOR SHALL BE RESPONSIBLE FOR OBTAINING THE NECESSARY APPROVALS AND ASSESSMENTS FROM THE LOCAL AUTHORITIES AND THE CLIENT. THE CONTRACTOR SHALL BE RESPONSIBLE FOR OBTAINING THE NECESSARY APPROVALS AND ASSESSMENTS FROM THE LOCAL AUTHORITIES AND THE CLIENT.
8. THE CONTRACTOR SHALL BE RESPONSIBLE FOR OBTAINING THE NECESSARY APPROVALS AND ASSESSMENTS FROM THE LOCAL AUTHORITIES AND THE CLIENT. THE CONTRACTOR SHALL BE RESPONSIBLE FOR OBTAINING THE NECESSARY APPROVALS AND ASSESSMENTS FROM THE LOCAL AUTHORITIES AND THE CLIENT.
9. THE CONTRACTOR SHALL BE RESPONSIBLE FOR OBTAINING THE NECESSARY APPROVALS AND ASSESSMENTS FROM THE LOCAL AUTHORITIES AND THE CLIENT. THE CONTRACTOR SHALL BE RESPONSIBLE FOR OBTAINING THE NECESSARY APPROVALS AND ASSESSMENTS FROM THE LOCAL AUTHORITIES AND THE CLIENT.
10. THE CONTRACTOR SHALL BE RESPONSIBLE FOR OBTAINING THE NECESSARY APPROVALS AND ASSESSMENTS FROM THE LOCAL AUTHORITIES AND THE CLIENT. THE CONTRACTOR SHALL BE RESPONSIBLE FOR OBTAINING THE NECESSARY APPROVALS AND ASSESSMENTS FROM THE LOCAL AUTHORITIES AND THE CLIENT.



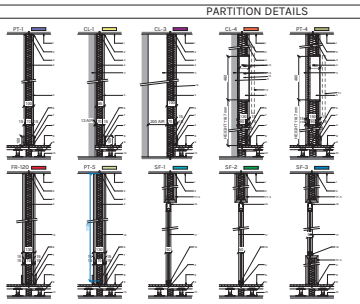
PARTITIONS SCHEDULE

A-3.0 _ PLASTERBOARD PARTITION SCHEDULE (UK)

NO.	NAME	TYPE	DESCRIPTION	MAX. HT.	WIDTH	REL.	MANUFACTURER
1	101	101	PLASTERBOARD PARTITION WITH 50mm INSULATION	2700	900	100	WATERBURY
2	102	102	PLASTERBOARD PARTITION WITH 50mm INSULATION	2700	900	100	WATERBURY
3	103	103	PLASTERBOARD PARTITION WITH 50mm INSULATION	2700	900	100	WATERBURY
4	104	104	PLASTERBOARD PARTITION WITH 50mm INSULATION	2700	900	100	WATERBURY
5	105	105	PLASTERBOARD PARTITION WITH 50mm INSULATION	2700	900	100	WATERBURY
6	106	106	PLASTERBOARD PARTITION WITH 50mm INSULATION	2700	900	100	WATERBURY
7	107	107	PLASTERBOARD PARTITION WITH 50mm INSULATION	2700	900	100	WATERBURY
8	108	108	PLASTERBOARD PARTITION WITH 50mm INSULATION	2700	900	100	WATERBURY
9	109	109	PLASTERBOARD PARTITION WITH 50mm INSULATION	2700	900	100	WATERBURY
10	110	110	PLASTERBOARD PARTITION WITH 50mm INSULATION	2700	900	100	WATERBURY
11	111	111	PLASTERBOARD PARTITION WITH 50mm INSULATION	2700	900	100	WATERBURY
12	112	112	PLASTERBOARD PARTITION WITH 50mm INSULATION	2700	900	100	WATERBURY
13	113	113	PLASTERBOARD PARTITION WITH 50mm INSULATION	2700	900	100	WATERBURY
14	114	114	PLASTERBOARD PARTITION WITH 50mm INSULATION	2700	900	100	WATERBURY
15	115	115	PLASTERBOARD PARTITION WITH 50mm INSULATION	2700	900	100	WATERBURY

A-3.0 _ STOREFRONT PARTITION SCHEDULE

NO.	NAME	TYPE	DESCRIPTION	MAX. HT.	WIDTH	REL.	MANUFACTURER
16	116	116	STOREFRONT PARTITION WITH 50mm INSULATION	2700	900	100	WATERBURY
17	117	117	STOREFRONT PARTITION WITH 50mm INSULATION	2700	900	100	WATERBURY



DETAILS LEGEND

NO.	DESCRIPTION
1	PLASTERBOARD PARTITION WITH 50mm INSULATION
2	PLASTERBOARD PARTITION WITH 50mm INSULATION
3	PLASTERBOARD PARTITION WITH 50mm INSULATION
4	PLASTERBOARD PARTITION WITH 50mm INSULATION
5	PLASTERBOARD PARTITION WITH 50mm INSULATION
6	PLASTERBOARD PARTITION WITH 50mm INSULATION
7	PLASTERBOARD PARTITION WITH 50mm INSULATION
8	PLASTERBOARD PARTITION WITH 50mm INSULATION
9	PLASTERBOARD PARTITION WITH 50mm INSULATION
10	PLASTERBOARD PARTITION WITH 50mm INSULATION
11	PLASTERBOARD PARTITION WITH 50mm INSULATION
12	PLASTERBOARD PARTITION WITH 50mm INSULATION
13	PLASTERBOARD PARTITION WITH 50mm INSULATION
14	PLASTERBOARD PARTITION WITH 50mm INSULATION
15	PLASTERBOARD PARTITION WITH 50mm INSULATION

DOOR SCHEDULE (BY GC)

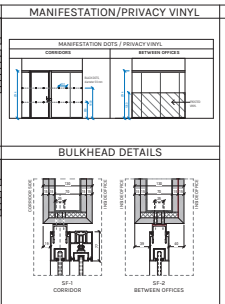
A-3.0 _ DOOR TYPE TOTALS SCHEDULE - BY GENERAL CONTRACTOR

NO.	NAME	TYPE	DESCRIPTION	NO.	NO.	NO.
1	101	101	GLASS DOOR WITH 50mm INSULATION	1	1	1
2	102	102	GLASS DOOR WITH 50mm INSULATION	1	1	1
3	103	103	GLASS DOOR WITH 50mm INSULATION	1	1	1
4	104	104	GLASS DOOR WITH 50mm INSULATION	1	1	1
5	105	105	GLASS DOOR WITH 50mm INSULATION	1	1	1
6	106	106	GLASS DOOR WITH 50mm INSULATION	1	1	1
7	107	107	GLASS DOOR WITH 50mm INSULATION	1	1	1
8	108	108	GLASS DOOR WITH 50mm INSULATION	1	1	1
9	109	109	GLASS DOOR WITH 50mm INSULATION	1	1	1
10	110	110	GLASS DOOR WITH 50mm INSULATION	1	1	1

DOOR SCHEDULE (BY EXTRAVEGA)

A-3.0 _ DOOR TYPE SCHEDULE - BY EXTRAVEGA

NO.	NAME	TYPE	DESCRIPTION	NO.	NO.	NO.
11	111	111	GLASS DOOR WITH 50mm INSULATION	1	1	1
12	112	112	GLASS DOOR WITH 50mm INSULATION	1	1	1
13	113	113	GLASS DOOR WITH 50mm INSULATION	1	1	1
14	114	114	GLASS DOOR WITH 50mm INSULATION	1	1	1
15	115	115	GLASS DOOR WITH 50mm INSULATION	1	1	1



SHEET NOTES

- MANUFACTURER SHALL SUBMIT FOR THE ARCHITECT'S APPROVAL ALL DOOR AND WINDOW SCHEDULES AND DETAILS FOR REVIEW AND APPROVAL. ALL DOORS AND WINDOWS SHALL BE SUPPLIED BY THE MANUFACTURER. THE MANUFACTURER SHALL BE RESPONSIBLE FOR THE SUPPLY AND INSTALLATION OF ALL DOORS AND WINDOWS AND FOR THE PROTECTION AND REPAIR OF THE SAME AND ADJACENT ALL. THE MANUFACTURER SHALL BE RESPONSIBLE FOR THE PROTECTION AND REPAIR OF THE SAME AND ADJACENT ALL. THE MANUFACTURER SHALL BE RESPONSIBLE FOR THE PROTECTION AND REPAIR OF THE SAME AND ADJACENT ALL. THE MANUFACTURER SHALL BE RESPONSIBLE FOR THE PROTECTION AND REPAIR OF THE SAME AND ADJACENT ALL.