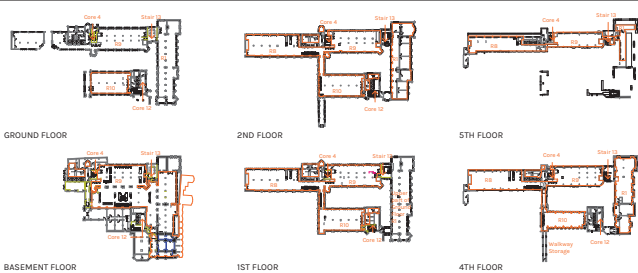
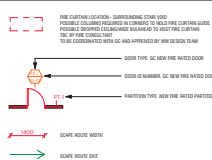


DEMISE AREA



EXITING LEGEND



TOILETS COUNT

WW TOILETS COUNT		WW TOILETS COUNT	
TYPE	COUNT	TYPE	COUNT
1ST FLOOR		4TH FLOOR B3	
COUNT - DISABLED	1	COUNT - FEMALE WC	3
COUNT - FEMALE WC	6	COUNT - MALE WC	3
COUNT - MALE WC	5	COUNT - URINAL	2
COUNT - URINAL	4	5TH FLOOR B3	
2ND FLOOR B2-B3		COUNT - MALE WC	1
COUNT - DISABLED	1	COUNT - URINAL	2
COUNT - FEMALE WC	6	50K1 FLOOR	
COUNT - MALE WC	5	COUNT - DISABLED	1
COUNT - URINAL	4	COUNT - FEMALE WC	3
4TH FLOOR B2		COUNT - MALE WC	3
COUNT - DISABLED	1	COUNT - URINAL	2
COUNT - FEMALE WC	2	6RD FLOOR	
COUNT - MALE WC	4	COUNT - FEMALE WC	3
COUNT - URINAL	4	COUNT - MALE WC	2
		COUNT - URINAL	2
		GRAND TOTALS	67

DESK COUNT

A-1.0 - DESK COUNT	
LEVEL	DESK
1ST FLOOR	15
2ND FLOOR	15
3RD FLOOR	15
4TH FLOOR	15
5TH FLOOR	15
6TH FLOOR	15
7TH FLOOR	15
8TH FLOOR	15
9TH FLOOR	15
10TH FLOOR	15
11TH FLOOR	15
12TH FLOOR	15
13TH FLOOR	15
14TH FLOOR	15
15TH FLOOR	15
16TH FLOOR	15
17TH FLOOR	15
18TH FLOOR	15
19TH FLOOR	15
20TH FLOOR	15
21TH FLOOR	15
22TH FLOOR	15
23TH FLOOR	15
24TH FLOOR	15
25TH FLOOR	15
26TH FLOOR	15
27TH FLOOR	15
28TH FLOOR	15
29TH FLOOR	15
30TH FLOOR	15
31TH FLOOR	15
32TH FLOOR	15
33TH FLOOR	15
34TH FLOOR	15
35TH FLOOR	15
36TH FLOOR	15
37TH FLOOR	15
38TH FLOOR	15
39TH FLOOR	15
40TH FLOOR	15
41TH FLOOR	15
42TH FLOOR	15
43TH FLOOR	15
44TH FLOOR	15
45TH FLOOR	15
46TH FLOOR	15
47TH FLOOR	15
48TH FLOOR	15
49TH FLOOR	15
50TH FLOOR	15
51TH FLOOR	15
52TH FLOOR	15
53TH FLOOR	15
54TH FLOOR	15
55TH FLOOR	15
56TH FLOOR	15
57TH FLOOR	15
58TH FLOOR	15
59TH FLOOR	15
60TH FLOOR	15
61TH FLOOR	15
62TH FLOOR	15
63TH FLOOR	15
64TH FLOOR	15
65TH FLOOR	15
66TH FLOOR	15
67TH FLOOR	15
68TH FLOOR	15
69TH FLOOR	15
70TH FLOOR	15
71TH FLOOR	15
72TH FLOOR	15
73TH FLOOR	15
74TH FLOOR	15
75TH FLOOR	15
76TH FLOOR	15
77TH FLOOR	15
78TH FLOOR	15
79TH FLOOR	15
80TH FLOOR	15
81TH FLOOR	15
82TH FLOOR	15
83TH FLOOR	15
84TH FLOOR	15
85TH FLOOR	15
86TH FLOOR	15
87TH FLOOR	15
88TH FLOOR	15
89TH FLOOR	15
90TH FLOOR	15
91TH FLOOR	15
92TH FLOOR	15
93TH FLOOR	15
94TH FLOOR	15
95TH FLOOR	15
96TH FLOOR	15
97TH FLOOR	15
98TH FLOOR	15
99TH FLOOR	15
100TH FLOOR	15

SHEET NOTES

1. MAIN CONTRACTOR SHALL SUBMIT FOR THE ARCHITECT'S APPROVAL DETAILED SHOP DRAWINGS FOR ALL JOBBY ITEMS PRIOR TO FABRICATION.
 2. ALL EXISTING AND NEW FLOOR SLAB PENETRATIONS FOR CORE DRILLS AND/OR PIPING SHALL BE FULLY PACKED AND SEALED WITH APPROVED FIRE STOPPING MATERIAL.
 3. PATCH, REPAIR OR REPLACE AS REQUIRED FIREPROOFING ON BASE BUILDING STRUCTURE EITHER MISSING OR DAMAGED IN THE COURSE OF REMEDIATION OR CONSTRUCTION.
 4. PROTECT ALL EXISTING CONDITIONS AND REPAIR ANY DAMAGE CAUSED BY THE WORKS.
 5. MAKE GOOD ALL EXISTING SURFACES AND PREPARE TO RECEIVE NEW FINISHES AS SHOWN ON FINISHES PLAN.
 6. MAKE GOOD ALL EXISTING SURFACES AND PREPARE TO RECEIVE NEW FINISHES AS SHOWN ON FINISHES PLAN.
 7. ALL ENCLOSED SPACES WITH DOORS TO ACHIEVE MIN. OF 2400 ADDITIONAL BATHING, UNLESS OTHERWISE NOTED.
 8. PARTITIONING MUST COMPLY AND COORDINATE WITH EXISTING CORES BY: GLAZED WALLS, CURVED CEILING, HANGING BEAM, ETC.
 9. IF MORE PARTS OF THE BUILDING MIGHT EVACUATE THROUGH THESE STAIRS, FIRE STRATEGY SHOULD BE REVIEWED.
- ALL FIRE DOORS TO BE PROVIDED WITH SMOKE SEALS
 REFER TO ENGINEERS FIRE STRATEGY REPORT FOR FURTHER DETAILS

DESK NOTES

