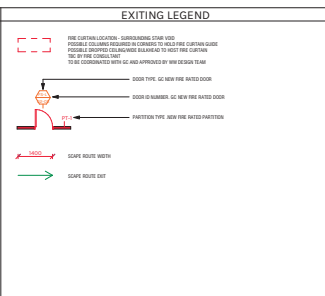
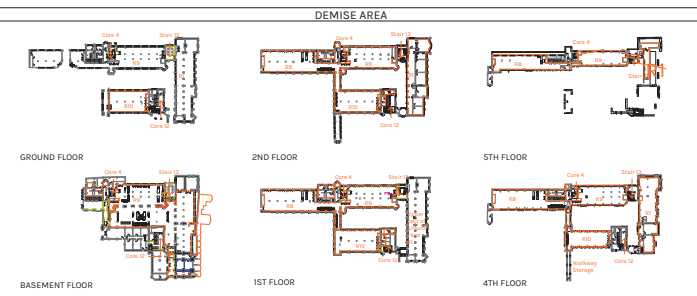


B ISSUE FOR CONSTRUCTION - FULL PACK 18/07/16
 A ISSUE FOR TENDER 18/06/29

Rev. Description Date



WW TOILETS COUNT		WW TOILETS COUNT		DESK COUNT			
TYPE	COUNT	TYPE	COUNT	A-1-0 _ DESK COUNT			
1ST FLOOR				DESK 2000	DESK 2000	DESK 2000	DESK 2000
COUNT - DISABLED	1	COUNT - FEMALE WC	3	DESK 2000	DESK 2000	DESK 2000	DESK 2000
COUNT - FEMALE WC	6	COUNT - MALE WC	2	DESK 2000	DESK 2000	DESK 2000	DESK 2000
COUNT - MALE WC	5	COUNT - URINAL	2	DESK 2000	DESK 2000	DESK 2000	DESK 2000
COUNT - URINAL	4	COUNT - DISABLED	1	DESK 2000	DESK 2000	DESK 2000	DESK 2000
2ND FLOOR B2-B3				DESK 2000	DESK 2000	DESK 2000	DESK 2000
COUNT - DISABLED	1	COUNT - MALE WC	1	DESK 2000	DESK 2000	DESK 2000	DESK 2000
COUNT - FEMALE WC	6	COUNT - URINAL	2	DESK 2000	DESK 2000	DESK 2000	DESK 2000
COUNT - MALE WC	5	COUNT - DISABLED	1	DESK 2000	DESK 2000	DESK 2000	DESK 2000
COUNT - URINAL	4	COUNT - FEMALE WC	3	DESK 2000	DESK 2000	DESK 2000	DESK 2000
3RD FLOOR				DESK 2000	DESK 2000	DESK 2000	DESK 2000
COUNT - DISABLED	1	COUNT - MALE WC	3	DESK 2000	DESK 2000	DESK 2000	DESK 2000
COUNT - FEMALE WC	5	COUNT - FEMALE WC	2	DESK 2000	DESK 2000	DESK 2000	DESK 2000
COUNT - MALE WC	4	COUNT - MALE WC	3	DESK 2000	DESK 2000	DESK 2000	DESK 2000
COUNT - URINAL	4	COUNT - URINAL	2	DESK 2000	DESK 2000	DESK 2000	DESK 2000
4TH FLOOR B2				DESK 2000	DESK 2000	DESK 2000	DESK 2000
COUNT - DISABLED	1	COUNT - FEMALE WC	3	DESK 2000	DESK 2000	DESK 2000	DESK 2000
COUNT - FEMALE WC	2	COUNT - MALE WC	2	DESK 2000	DESK 2000	DESK 2000	DESK 2000
COUNT - MALE WC	4	COUNT - FEMALE WC	3	DESK 2000	DESK 2000	DESK 2000	DESK 2000
COUNT - URINAL	4	COUNT - MALE WC	2	DESK 2000	DESK 2000	DESK 2000	DESK 2000
COUNT - URINAL	4	COUNT - URINAL	2	DESK 2000	DESK 2000	DESK 2000	DESK 2000
Grand total: 67				DESK 2000	DESK 2000	DESK 2000	DESK 2000

- #### SHEET NOTES
- MAIN CONTRACTOR SHALL SUBMIT FOR THE ARCHITECT'S APPROVAL DETAILED SHOP DRAWINGS FOR ALL JOINERY ITEMS PRIOR TO FABRICATION.
 - ALL EXISTING AND NEW FLOOR SLAB PENETRATIONS FOR CORE DRILLS AND/OR PIPING SHALL BE FULLY PACKED AND SEALED WITH FIRE RATED FIRE STOPPING MORTAR.
 - PATCH REPAIR OR REPLACE AS REQUIRED FIREPROOFING ON BASE BUILDING STRUCTURE EITHER MISSING OR DAMAGED IN THE COURSE OF DEMOLITION OR CONSTRUCTION.
 - PROTECT ALL EXISTING CONDITIONS AND REPAIR ANY DAMAGE CAUSED BY THE WORKS.
 - MAIN CONTRACTOR TO THOROUGHLY INSPECT THE PREMISES PRIOR TO COMMENCING THE WORK AND REPORT TO THE OWNER AND ARCHITECT ALL DAMAGES FOUND.
 - MAKE GOOD ALL EXISTING SURFACES AND PREPARE TO RECEIVE NEW FINISHES AS SHOWN ON FINISHES PLAN.
 - ALL ENCLOSED SPACES WITH DOORS TO ACHIEVE MIN. OF 2400 ADDITIONAL BATTING, UNLESS OTHERWISE NOTED.
 - PARTITIONING MUST COMPLY AND COORDINATE WITH EXISTING CORE DRILL, SQUARE WALLS, CURVED CEILING, HANGING BEAM, ETC.
 - IF MORE PARTS OF THE BUILDING MIGHT EVALUATE THROUGH THESE STAIRS, FIRE STRATEGY SHOULD BE REVIEWED.
- ALL FIRE DOORS TO BE PROVIDED WITH SMOLE SEALS**
REFER TO ENGINEERS FIRE STRATEGY REPORT FOR FURTHER DETAILS
- #### DESK NOTES
- PROVIDE NEW DESK WITH 100mm
 NEW POSSIBLE DESK WITH 100mm CONCRETE REINFORCEMENT



Architect: **Elvira Conajero Crespo**

Signature: _____

Job No.: **LB-P16-W018-18**

Scale: **As indicated @ A0**

Title: **1ST FLOOR - GENERAL ARRANGEMENT**

Sheet: **A-1-0 L01** Rev. **B**