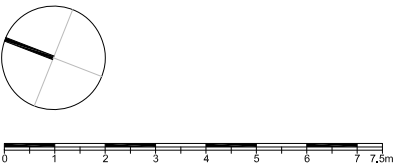


- Notes:
- Existing white metal framed window. Framing spray panted. Colour: Dark grey, RAL: 7043.
  - Existing white metal framed curtain walling. Framing spray painted. Colour: Dark grey, RAL: 7043.
  - New metal balustrade. Colour: Dark grey, RAL 7043.
  - Existing brick parapet.
  - New metal framed curtain walling. Colour: Dark grey, RAL 7043.
  - New metal framed doors. Colour: Dark grey, RAL 7043.
  - External terrace with decking finish.
  - New PPC acoustic metal louvered plant screen. Colour: Light grey, RAL: 9006.
  - New plant enclosure metal door. Colour: White.
  - New PPC metal clad tray containing plant cables. Colour: Light grey, RAL: 9006.



For Planning

| Rev. | Description.                      | By | Date     |
|------|-----------------------------------|----|----------|
| P2   | Issued for Non-Material Amendment | TM | 18.07.18 |

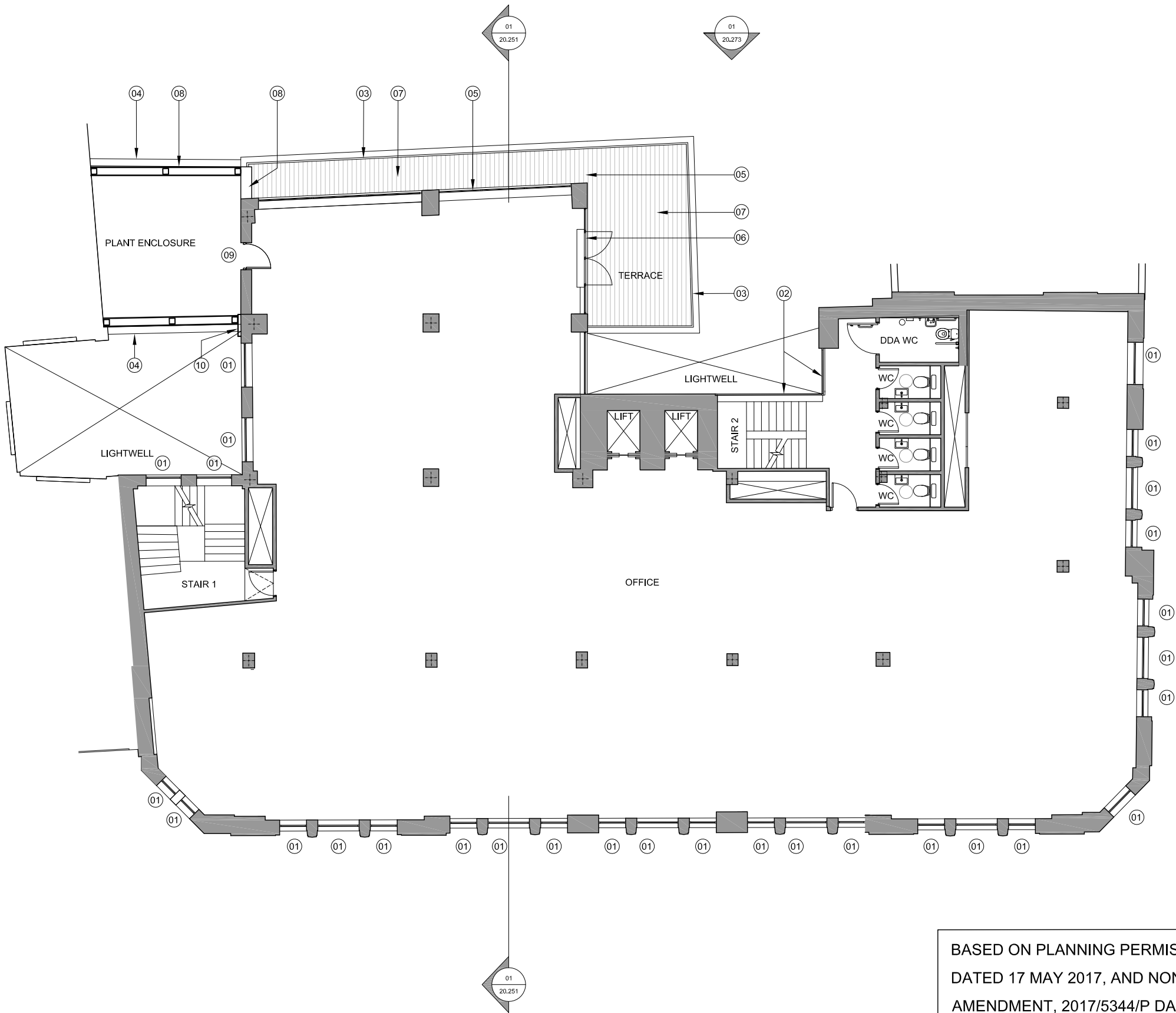
Client  
BC Noho Limited

Project  
Cleveland Street

Title  
Consented Fourth Floor Plan

| Project No. | Drawing No. | Rev.       |
|-------------|-------------|------------|
| 1621.3      | 20.206      | P2         |
| Scale       | 1:75 @ A1   | 1:150 @ A3 |
| Drawn       | Checked     | Date       |
| TM          | TL          | 14.06.18   |

Do not scale from this drawing. The Contractor is to take and check all dimensions on site before work commences. Discrepancies must be reported to the Architect. Subcontractors must verify all dimensions on site before making a shop drawing or commencing manufacturing. This drawing is copyright. ©



BASED ON PLANNING PERMISSION , 2016/7076/P  
DATED 17 MAY 2017, AND NON-MATERIAL  
AMENDMENT, 2017/5344/P DATED 26 OCTOBER 2017.

01  
20.206  
Consented Fourth Floor Plan  
Scale 1:150 @ A3