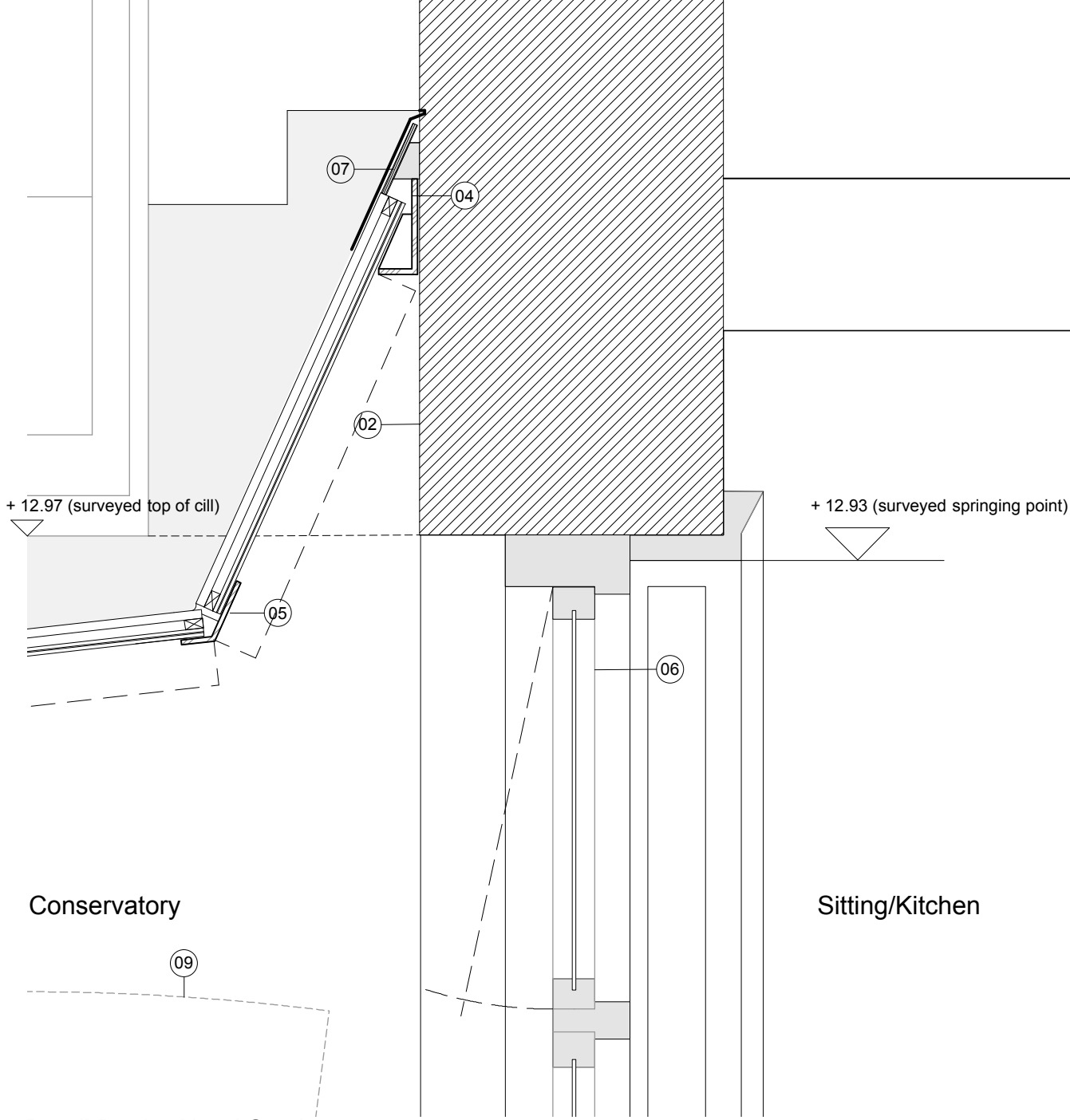
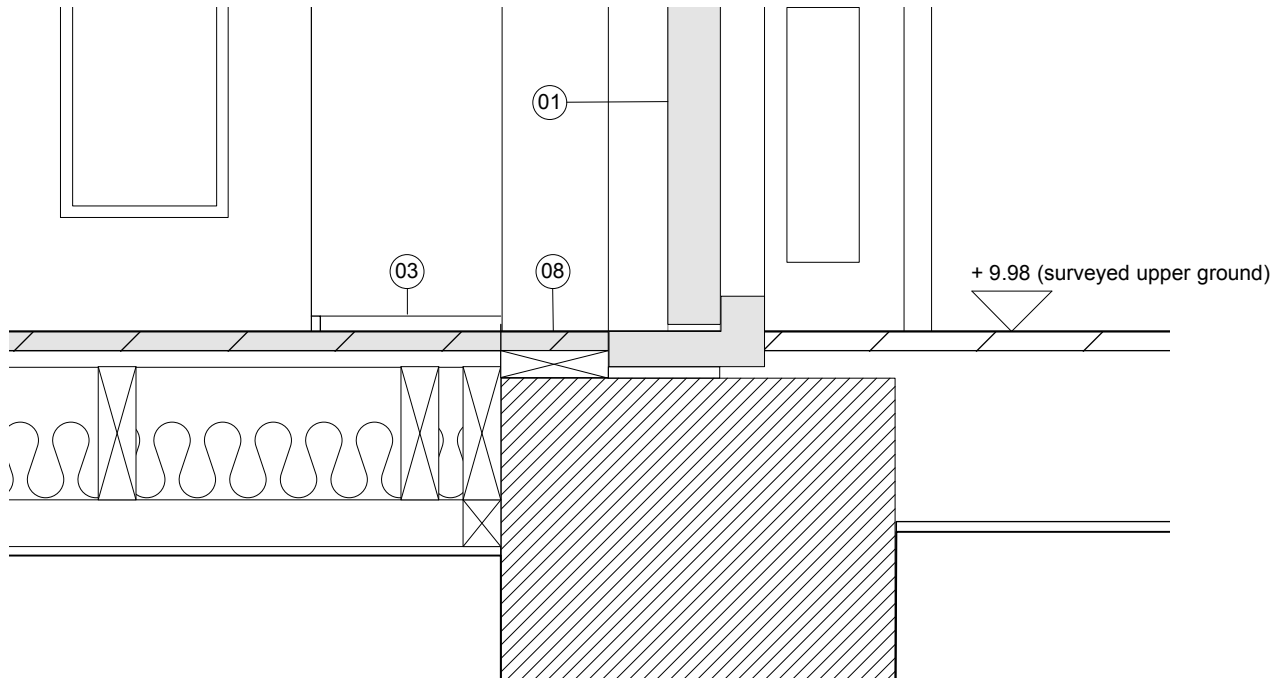


Detail A - 1:20 Elevation Existing doorway from Conservatory



Detail B - 1:5 Head Section



Detail C - 1:5 Cill Section

KEY

- 01. Existing french doors refurbished, retained and sealed shut.
- 02. Exposed original brickwork.
- 03. 20mm shadow gap skirting painted out black with stainless steel angle bead to plasterboard edge
- 04. New, double glazed unit bears onto 150x65x8 stainless steel continuous angle, with shaped rest.
- 05. Stainless steel angle support at change in direction
- 06. Existing overhead ventilating fan light retained
- 07. Lead flashing dressed dressed into raked out joint, and lead wedged
- 08. New Engineered hardwood floor abuts historic door cill with Electric under floor heating mat to new Conservatory
- 09. Arch of existing window beyond, dotted, concealed behind plasterboard lining. (Refer to separate drawing T - 2016.02.401 for details for new doorway formed within)

Revisions:	Notes: All dimensions in mm
A	28/06/18
	Modified abutment detail

Type

TENDER DRAWING

Dwg. no.

T - 2016.02.400-A

Date:

March 2017

Scale:

1:20 and 1:5 @A3

Drawn/checked:

SM / NW

Client:

Samuel and Melissa Geary-Jones

Job title:

6 Regents Park Terrace

Drawing title:

Joinery Details - Sheet 1

NEIL WILSON ARCHITECTS

37 Montagu Square

London W1H 2LL

Office + 44 (0) 20 7723 6630

Mobile + 44 (0) 7975 657 579

neil@neilwilsonarchitects.co.uk

www.neilwilsonarchitects.co.uk