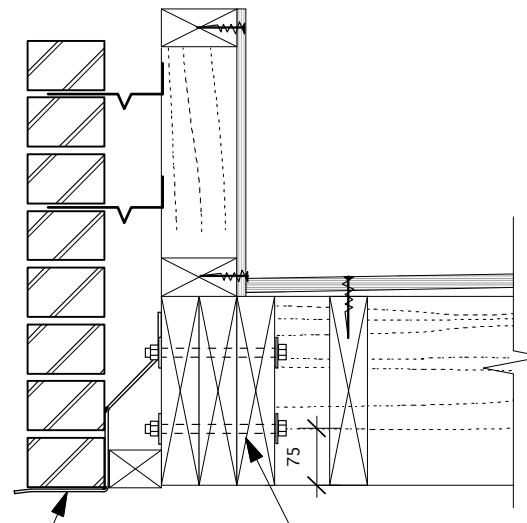


bolt 50x100 sole plate with M12 resin anchors at 400 c/c; use 40 sq x 4 thk washers to timber faces

Detail D07

location G890/03 – section thru parapet 1:10



install lintel to Catnic details

bolt with M12 bolts at 400 c/c top and bottom, staggered; use 40 sq x 4 thk washers to timber faces

Detail D08

location G890/03 – section thru parapet over window 1:10

This drawing is to be read together with all other relevant Architects and Engineers drawings and specification.

© Ling Engineering Limited - All rights described in Chapter IV of the Copyright, Designs and Patents Act 1988 have been asserted. This drawing is to be read in conjunction with the specification and all relevant drawings. Contractor to check all dimensions on site. Do not scale from this drawing. Ling Engineering Limited to be advised of any variation between the drawings and site conditions.

Client
Lumiere Interiors

Project
30 Frognal Lane, NW3

Location

Drawing Title
Details 7 - 12

Project Number	Drawing Number	Revision
890	51	-
Date	Scale	Status
06.07.18	1:50 (A3)	Construction
Drawn	Checked	Approved
GL	-	-

LING
ENGINEERING

Rev	Date	Description

Location Plan