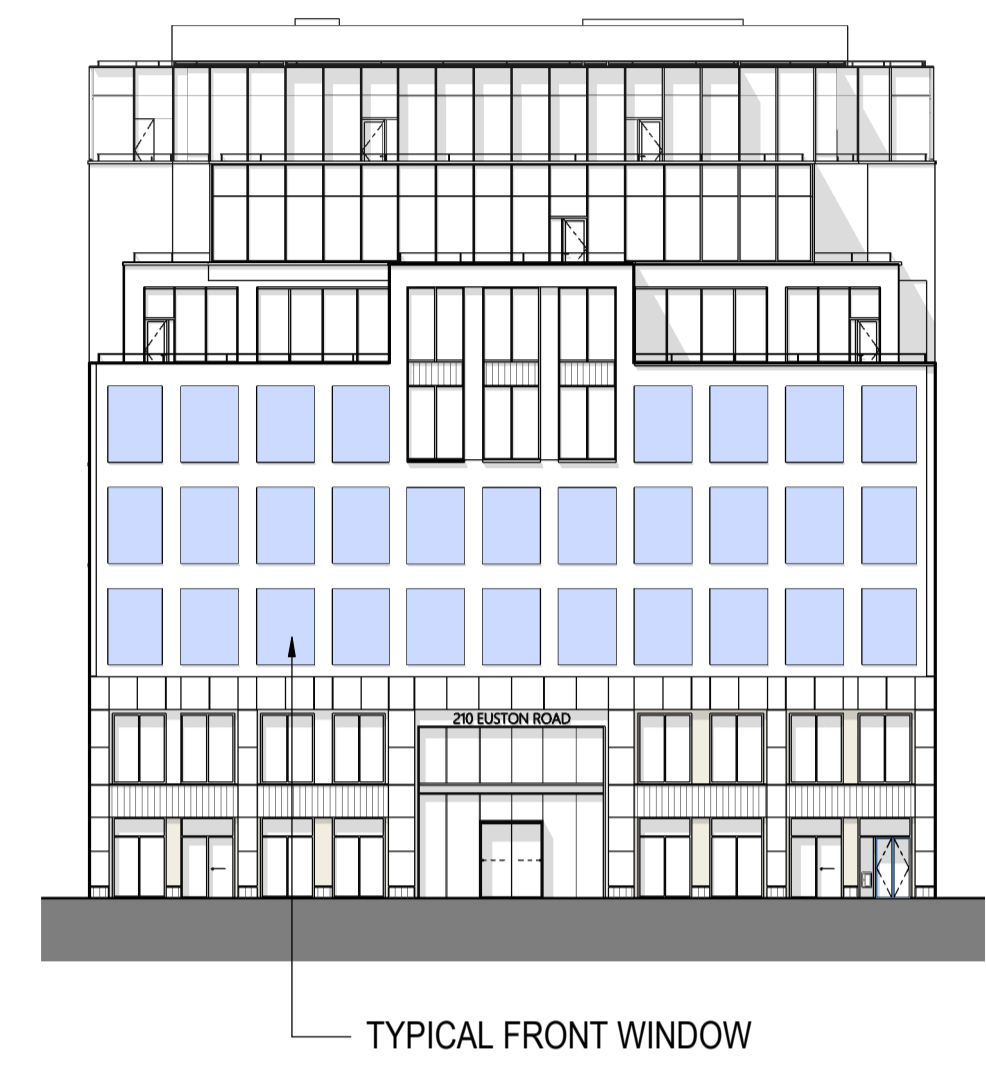


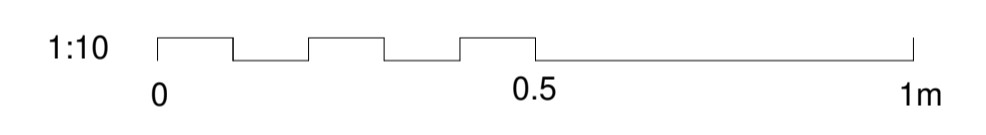
Contractors are to check all dimensions prior to commencement on site and notify the architect of any errors, omissions, or discrepancies.

TateHindle Limited retain copyright of this drawing. It may not be copied, altered or reproduced in any way without their written authority.

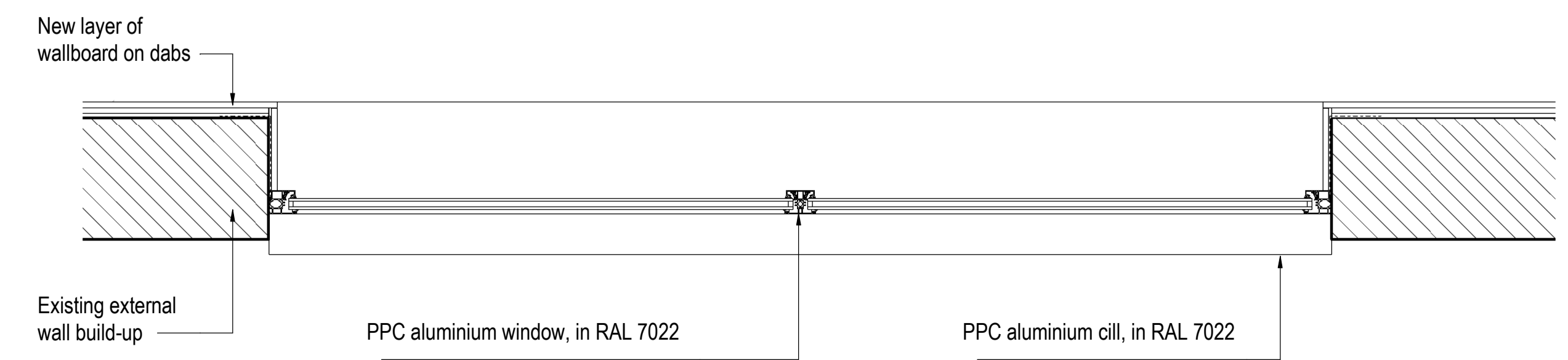
**KEY ELEVATION**



**NOTE:**  
New window as L10



**1 Elevation Detail Window Type 02**  
1 : 10



**2 Plan Detail Window Type 02**  
1 : 10

**3 Section Detail Window Type 02**  
1 : 10

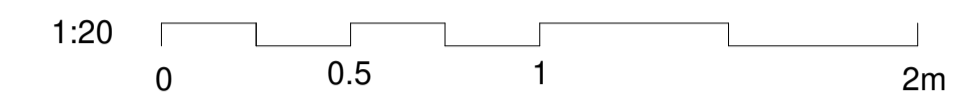
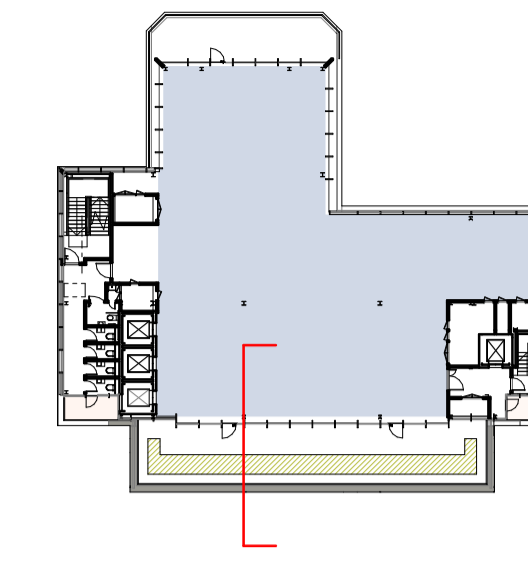
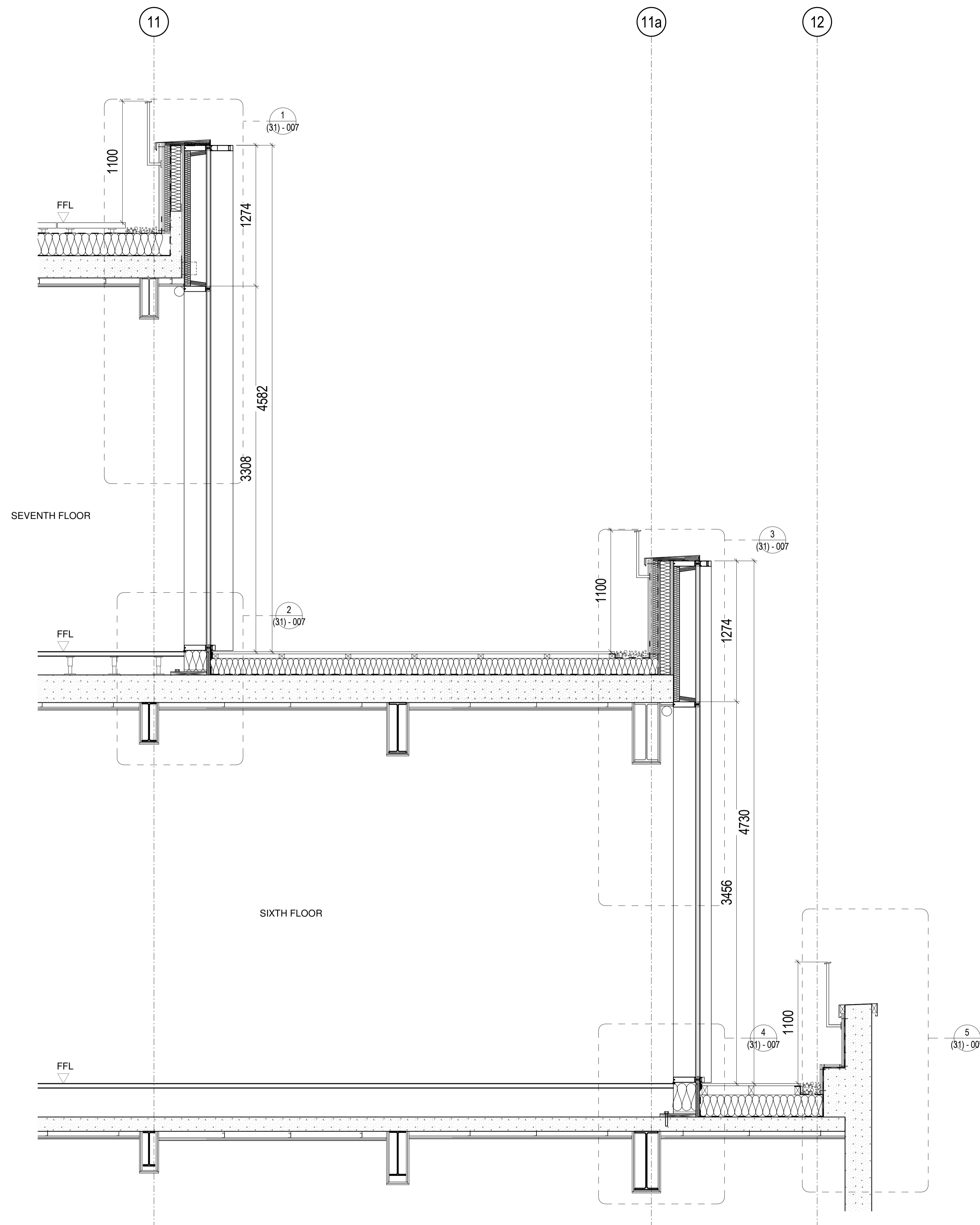
00	Issue for Planning	10-07-18	NT
Rev	Description	Date	Checked
Status For Planning			
Client Wellcome Trust			
Project 210 Euston Road			
Drawing Proposed External Window - Type 02			

Scale	Drawn	Date	Checked
1:10@A1	VS	07/04/18	SB
Project no.	Drg	Revision	
15077	A - (31) - 005	00	



**TateHindle Limited**  
1 Lindsey Street  
Smithfield  
London EC1A 9HP

T 020 7332 4850  
mail@tatehindle.co.uk  
www.tatehindle.co.uk



Contractors are to check all dimensions prior to commencement on site and notify the architect of any errors, omissions, or discrepancies.

TateHindle Limited retain copyright of this drawing. It may not be copied, altered or reproduced in any way without their written authority.

**1 Proposed detail section**  
1:20

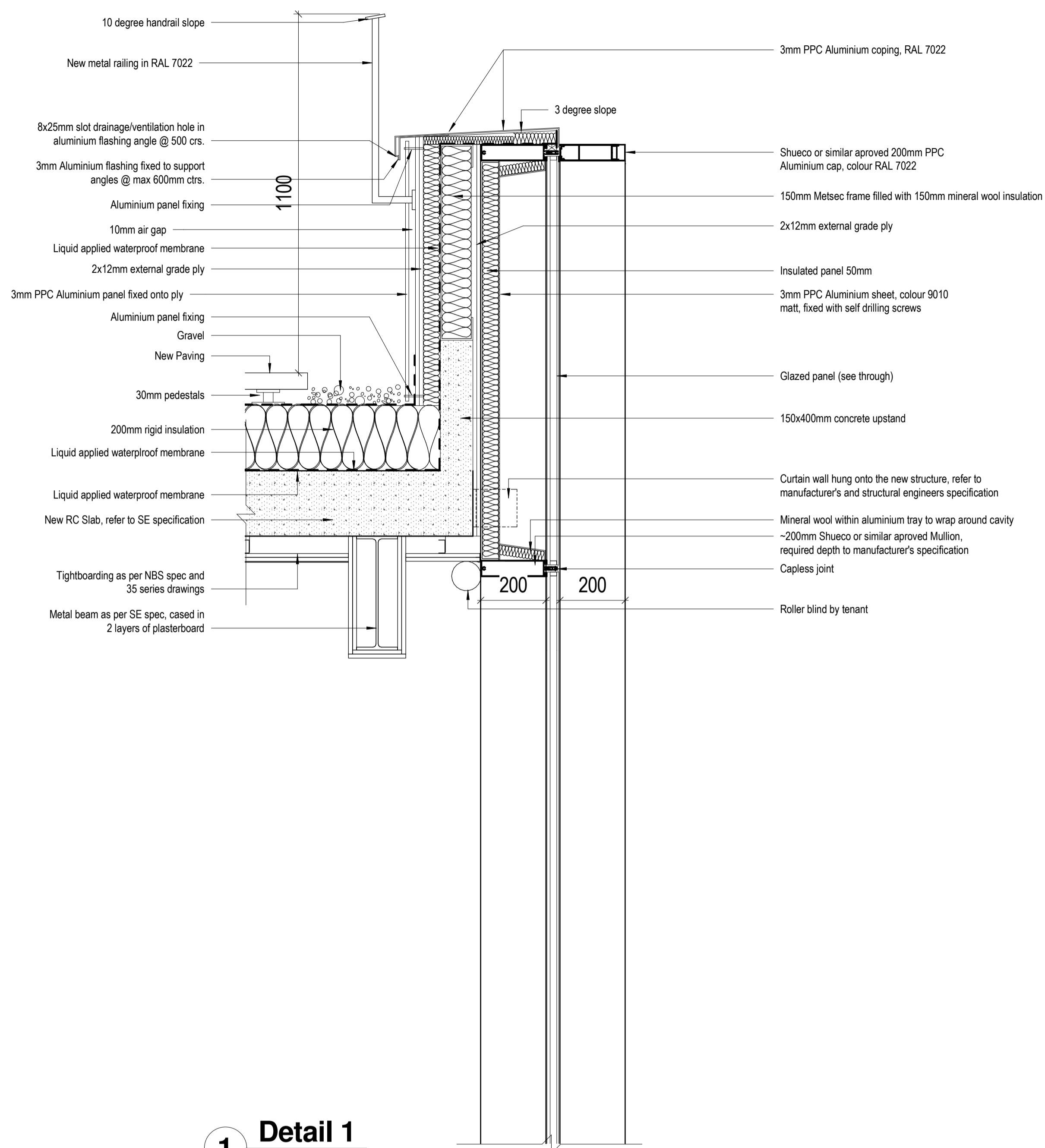
00	Issue for Planning	10-07-18	NT
Rev	Description	Date	Checked
Status			
For Planning			
Client			
Wellcome Trust			
Project			
210 Euston Road			
Drawing			
Terrace Section			
Scale	Drawn	Date	Checked
1:20@A1	EB	07/05/18	Checker
Project no.	Drg	Revision	
15077	A - (31) - 006	00	

**tatehindle**

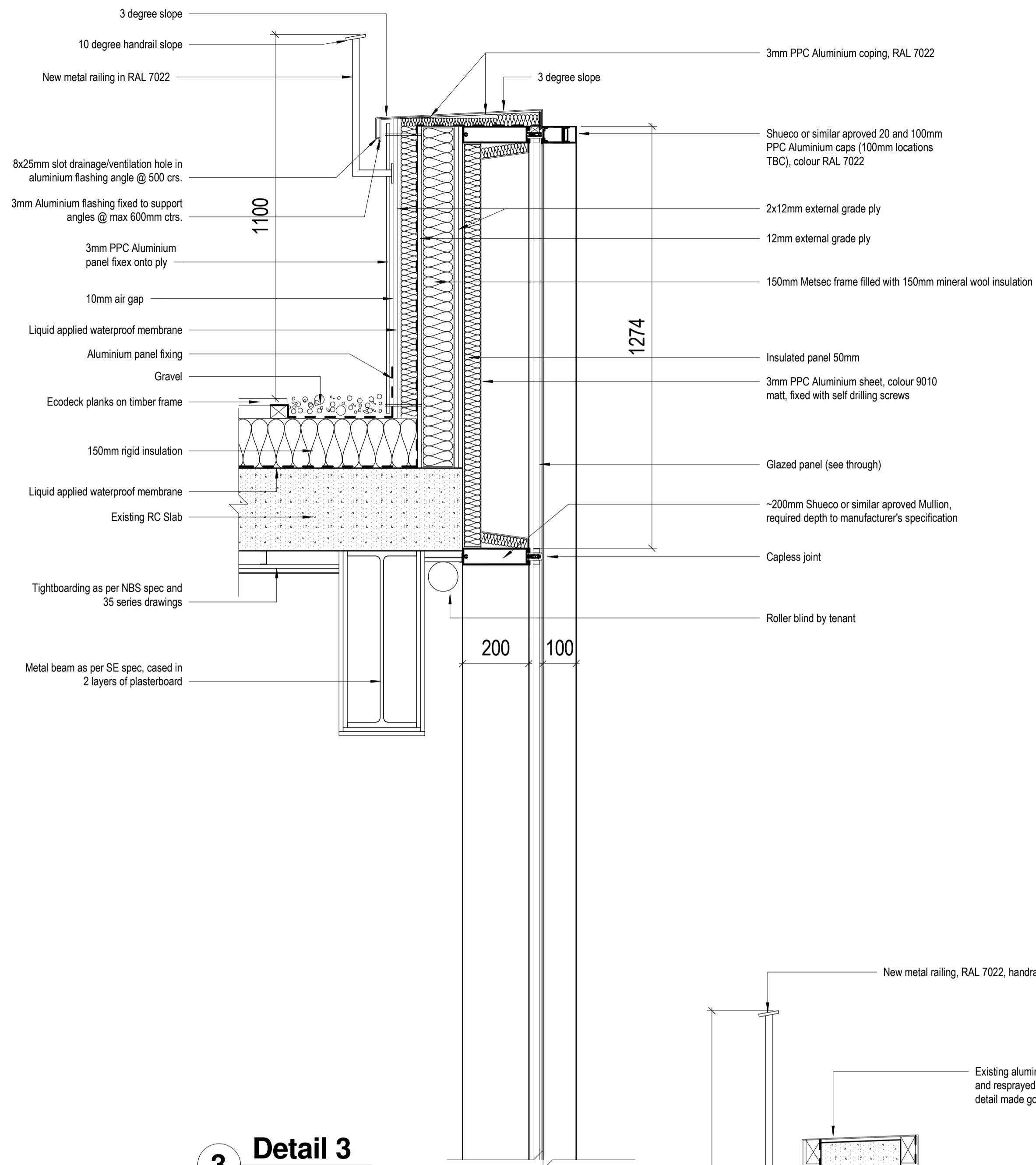
TateHindle Limited  
1 Lindsey Street  
Smithfield  
London EC1A 9HP  
T 020 7332 4850  
mail@tatehindle.co.uk  
www.tatehindle.co.uk

Contractors are to check all dimensions prior to commencement on site and notify the architect of any errors, omissions, or discrepancies.

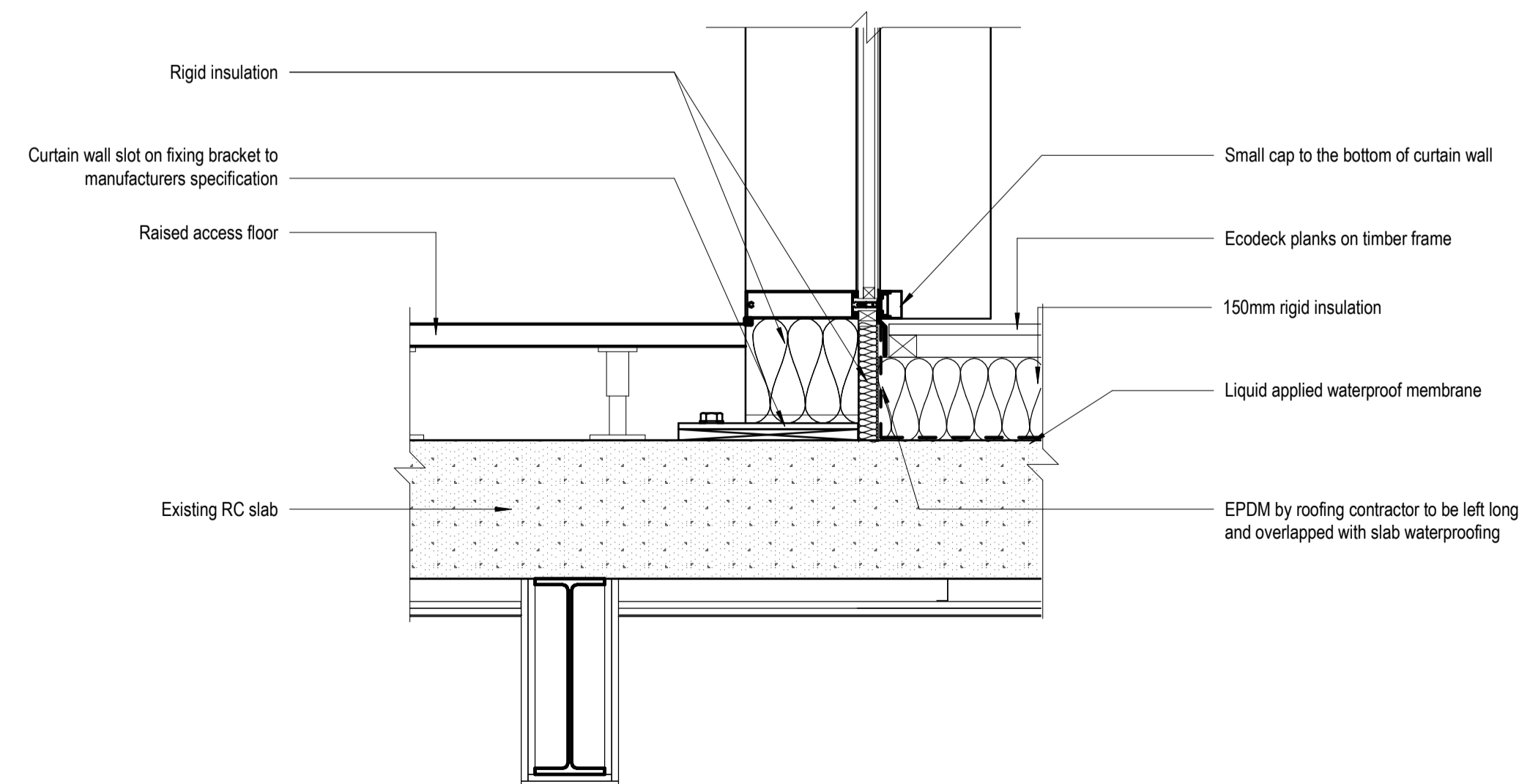
TateHindle Limited retain copyright of this drawing. It may not be copied, altered or reproduced in any way without their written authority.



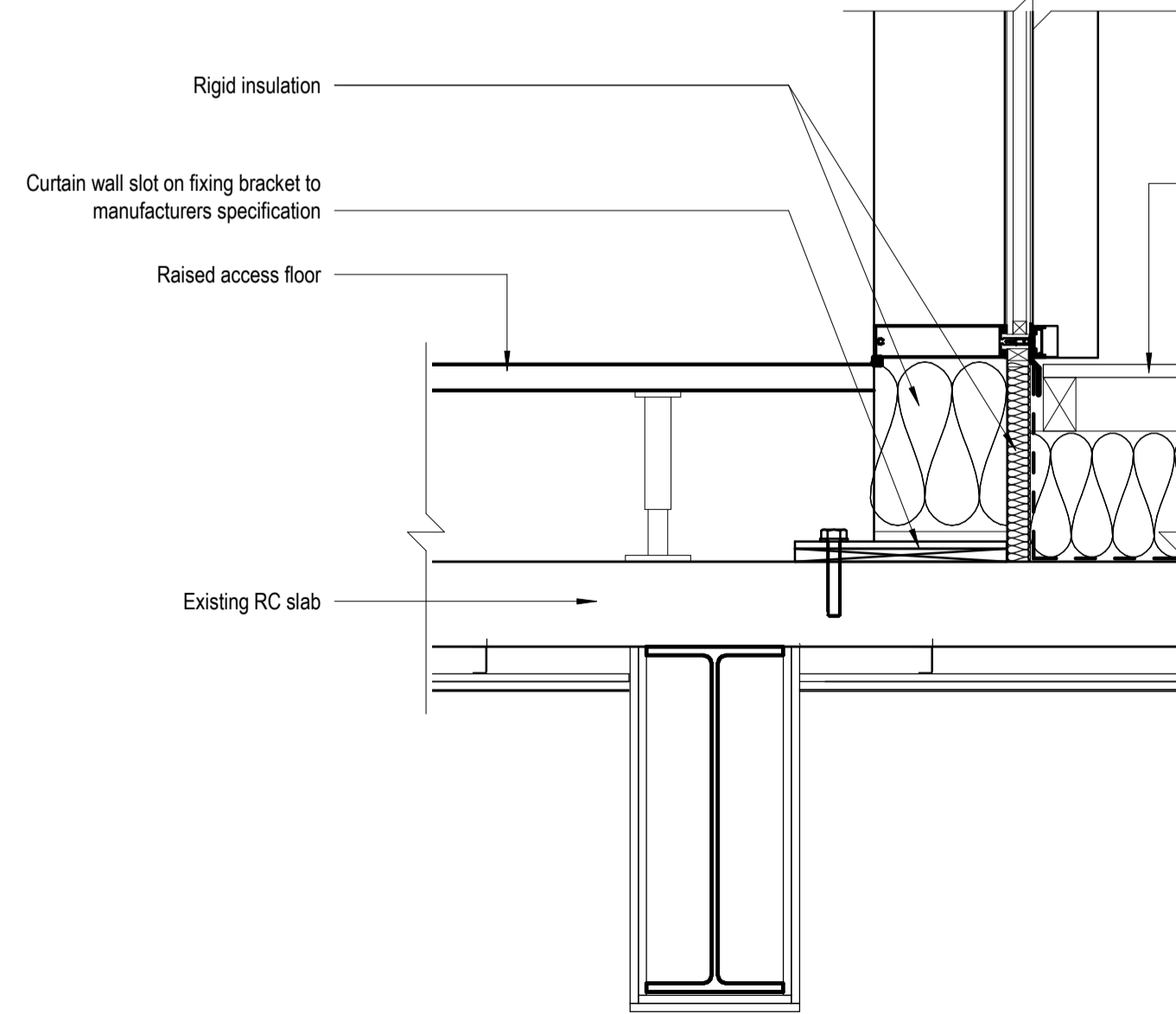
**1 Detail 1**  
1 : 10



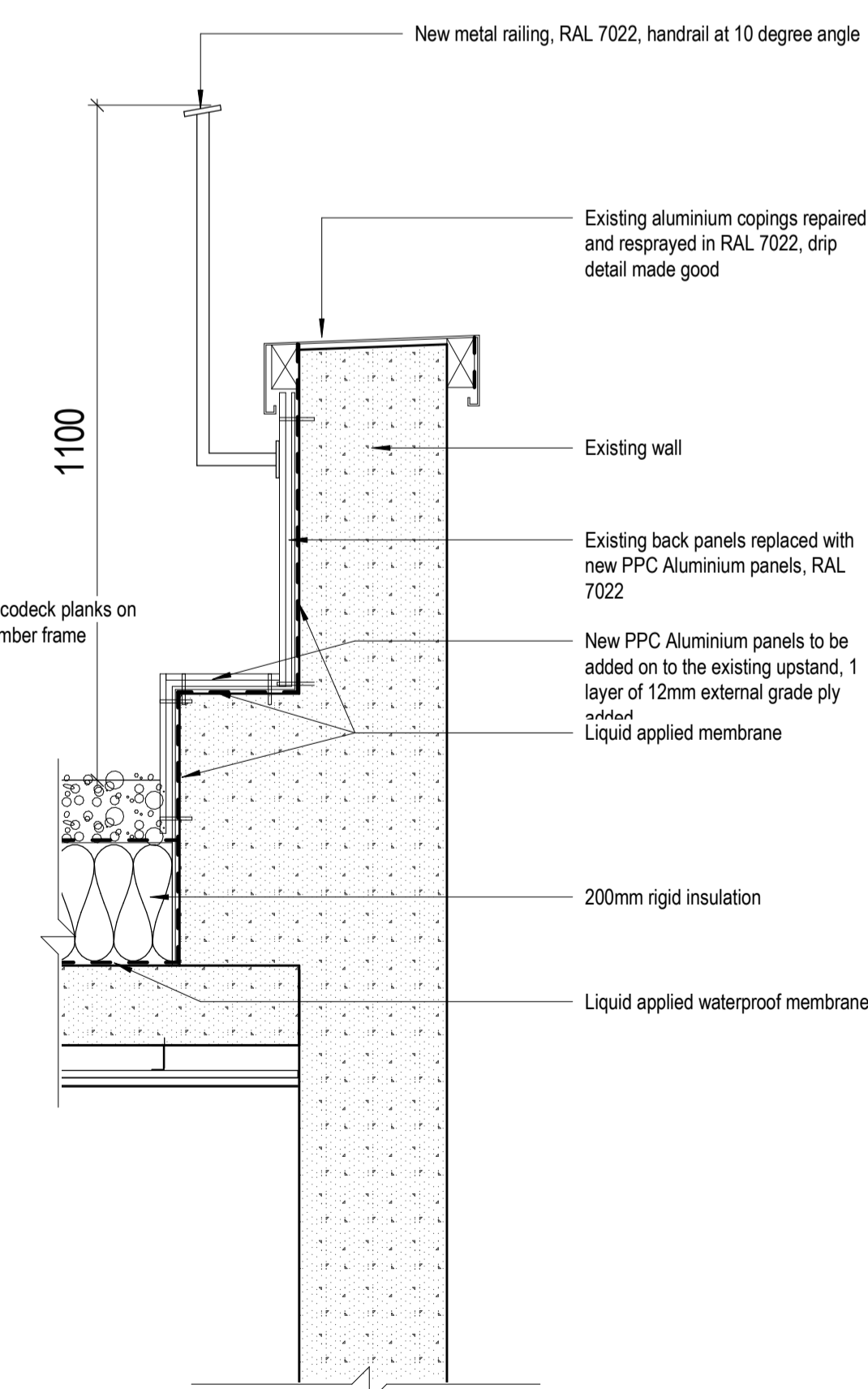
**3 Detail 3**  
1 : 10



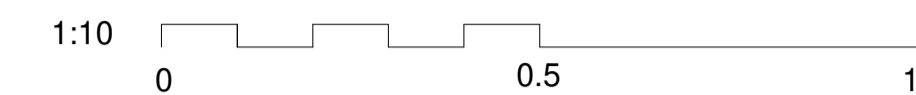
**2 Detail 2**  
1 : 10



**4 Detail 4**  
1 : 10



**5 Detail 5**  
1 : 10



**LEGEND:**

All curtain wall works as H11.  
All roofing as J specs  
Raised floor as K41

00	Issue for Planning	10-07-18	NT
Rev	Description	Date	Checked

Status  
**For Planning**

Client  
**Wellcome Trust**

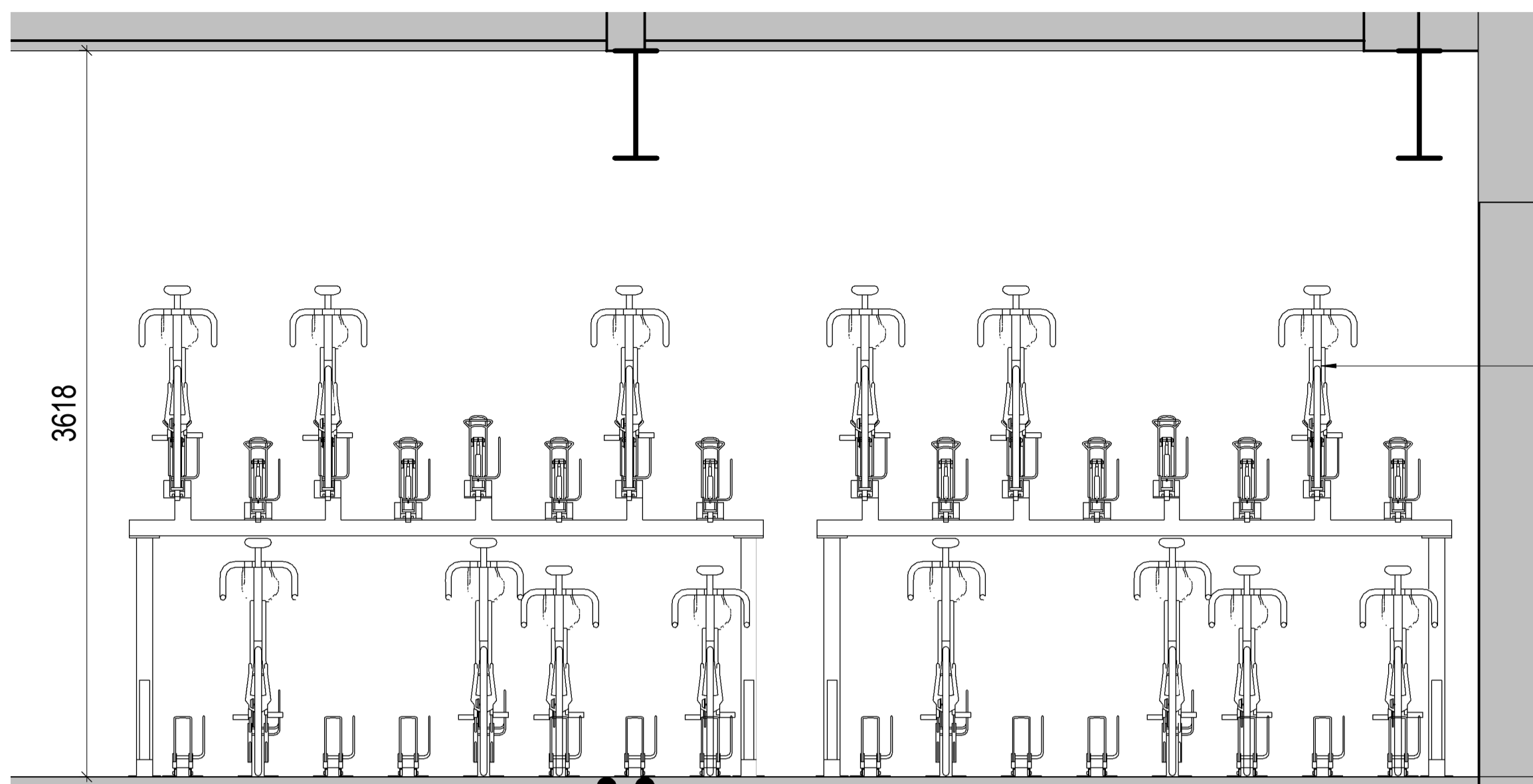
Project  
**210 Euston Road**

Drawing  
**Terrace Details**

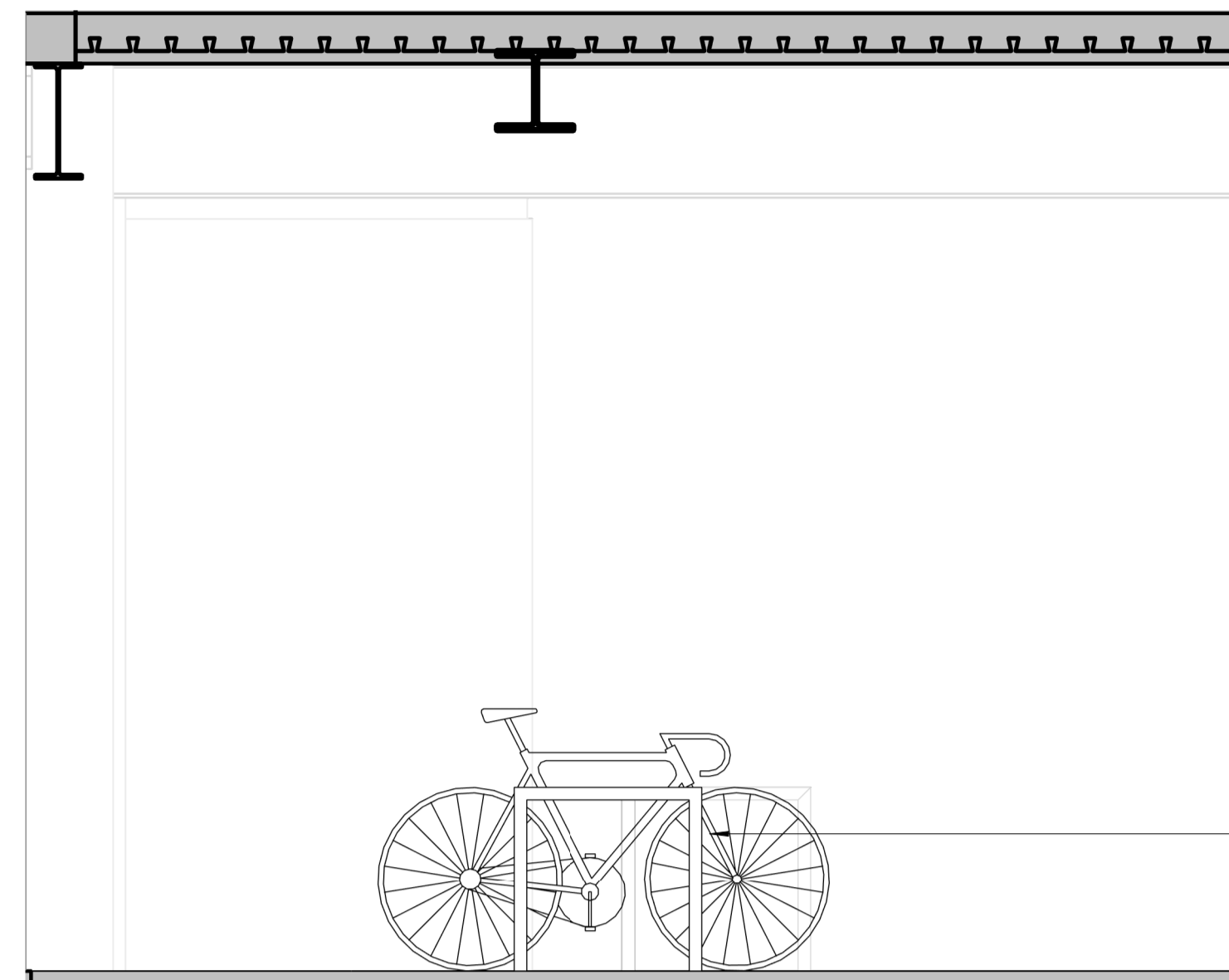
Scale	Drawn	Date	Checked
1:10@A1	Author	07/06/18	Checker
Project no.	Dwg	Revision	
15077	A - (31) - 007	00	

**tatehindle**

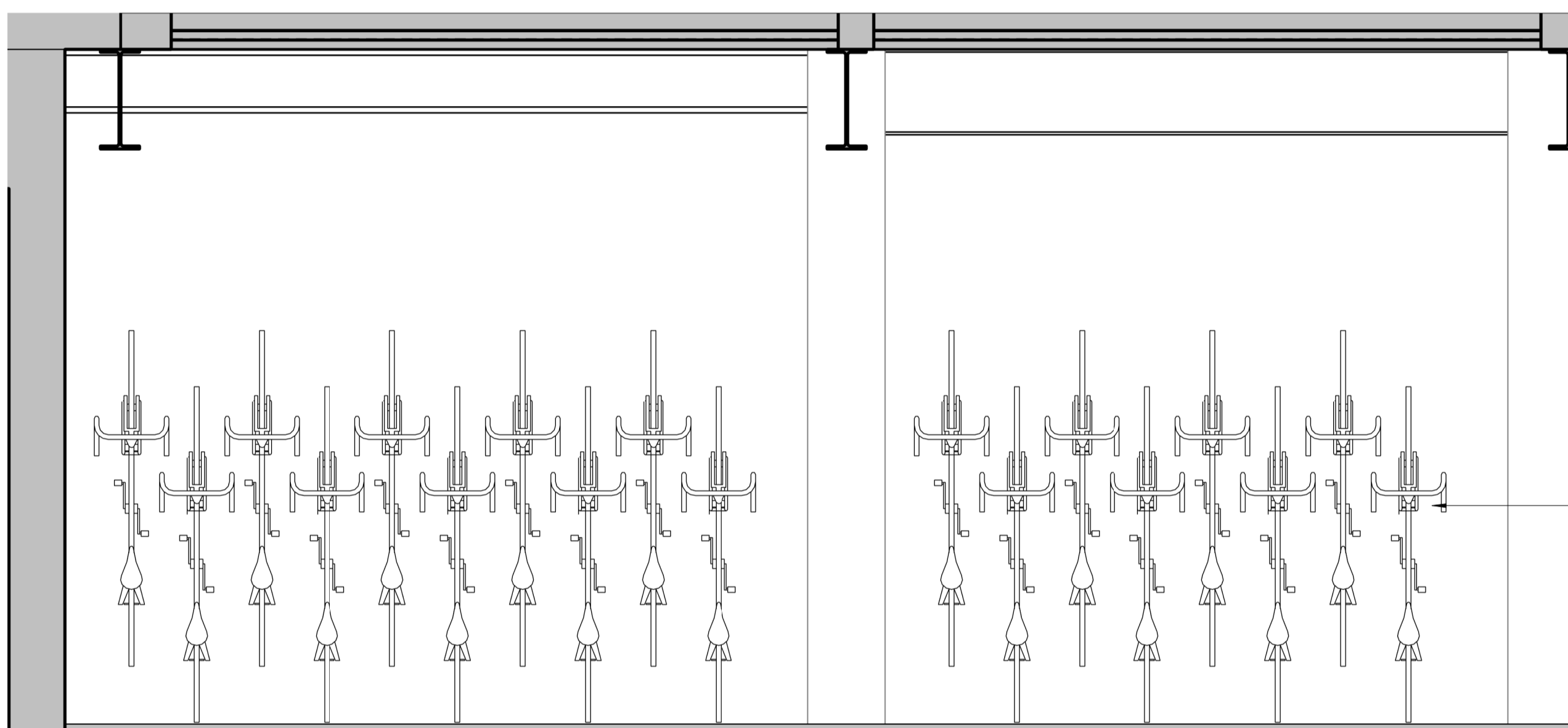
TateHindle Limited  
1 Lindsey Street  
Smithfield  
London EC1A 9HP  
T 020 7332 4850  
mail@tatehindle.co.uk  
www.tatehindle.co.uk



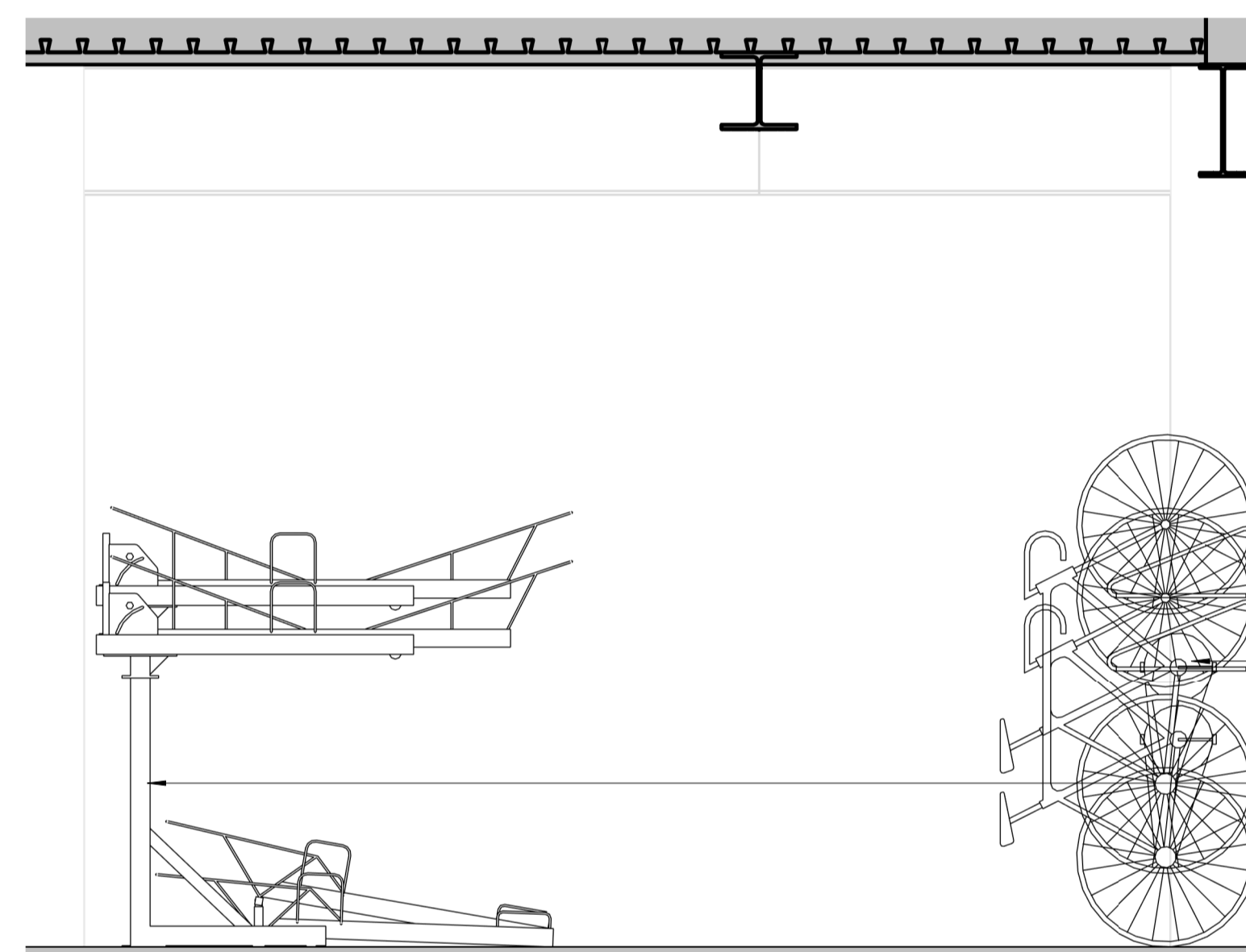
**1 Elevation 1**  
1 : 25



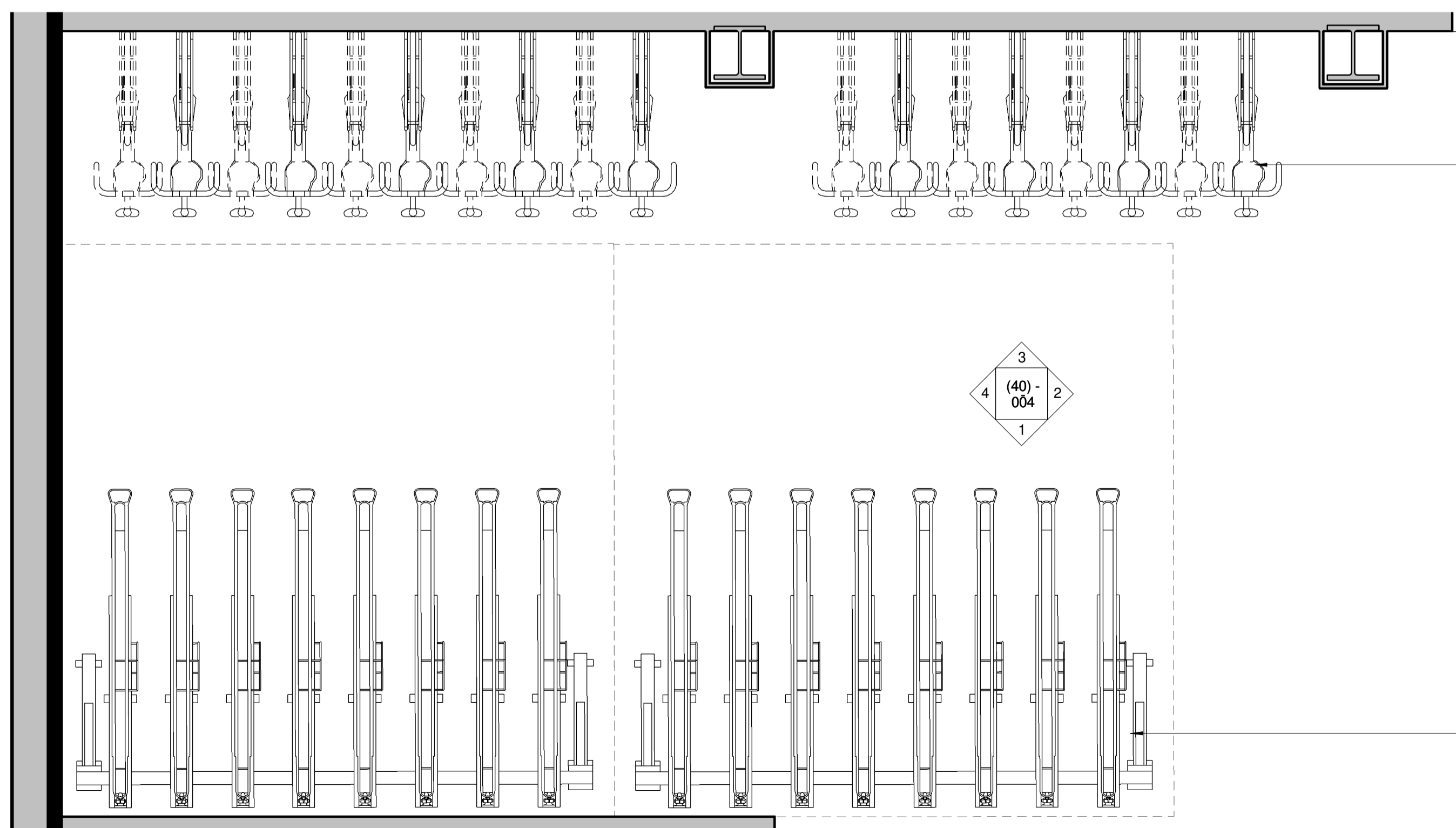
**2 Elevation 2**  
1 : 25



**3 Elevation 3**  
1 : 25



**4 Elevation 4**  
1 : 25

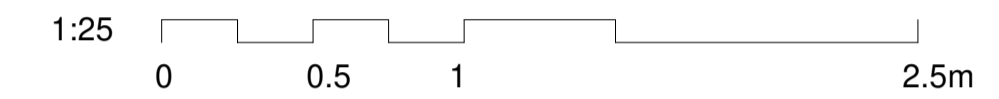


**5 Typical Cycle Store Plan**  
1 : 25

Contractors are to check all dimensions prior to commencement on site and notify the architect of any errors, omissions, or discrepancies.

TateHindle Limited retain copyright of this drawing. It may not be copied, altered or reproduced in any way without their written authority.

Cycle Storage	
Type	Number of bikes
Josta 2 Tier Cycle Racks	184
Sheffield Accessible Cycle Rack	5
Josta Vertical Cycle Racks	18
<b>Total</b>	<b>207</b>



Rev	Description	Date	Checked
00	Issue for Planning	10-07-18	NT

Status  
**For Planning**

Client  
**Wellcome Trust**

Project  
**210 Euston Road**

Drawing  
**Proposed Cycle Store Detail**

Scale	Drawn	Date	Checked
	VS	05/04/18	SB

Project no.	Dwg	Revision
15077	A - (40) - 004	00

**tatehindle**

TateHindle Limited  
1 Lindsey Street  
Smithfield  
London EC1A 9HP  
T 020 7332 4850  
mail@tatehindle.co.uk  
www.tatehindle.co.uk