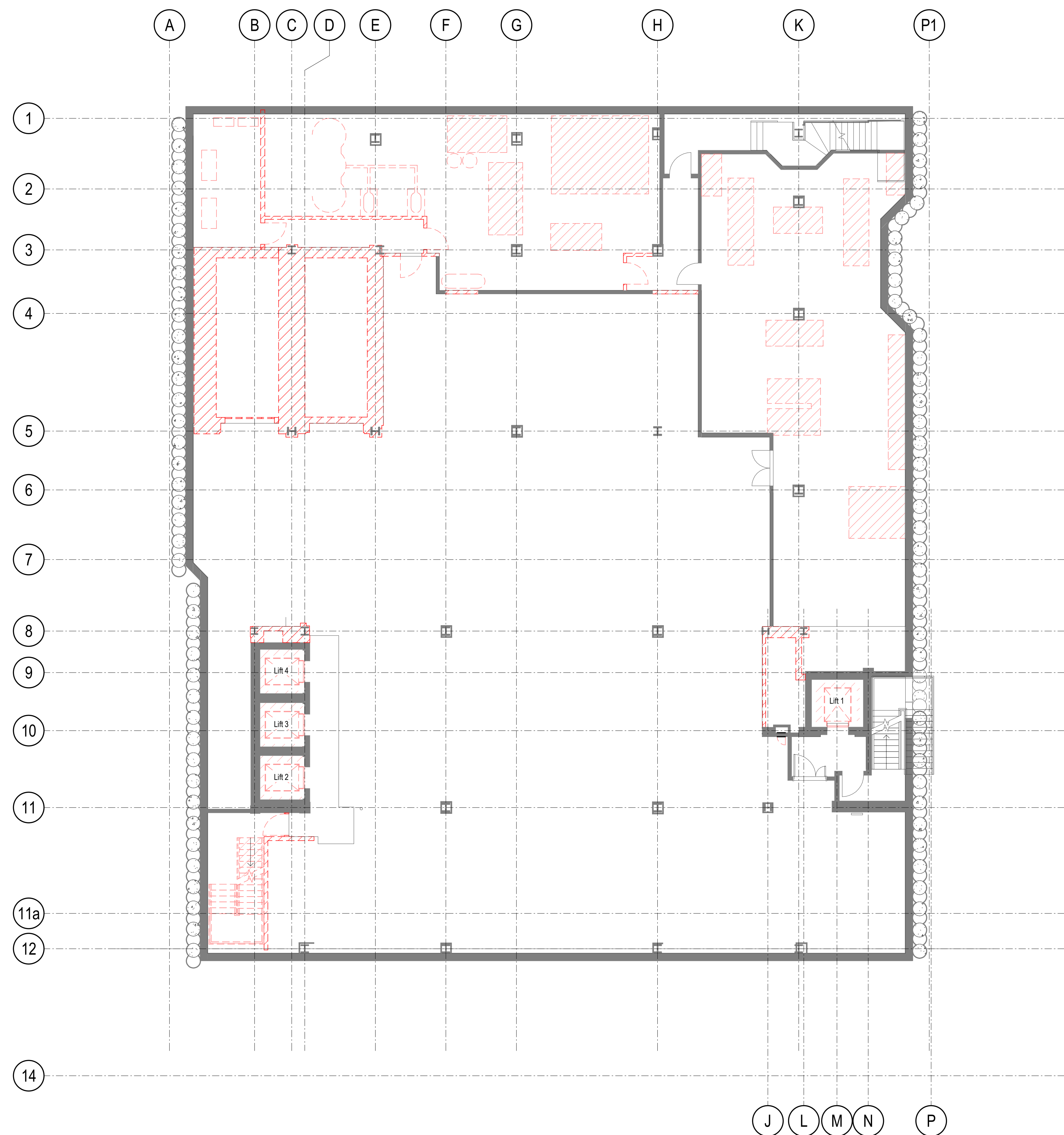


Contractors are to check all dimensions prior to commencement on site and notify the architect of any errors, omissions, or discrepancies.

TateHindle Limited retain copyright of this drawing. It may not be copied, altered or reproduced in any way without their written authority.



Demolition KEY

--- Walls, Doors and Stairs to be removed

▨ Slab Demolition

00	Issue for Planning	03-07-18	VS
Rev	Description	Date	Checked

Status
For Planning

Client
Wellcome Trust

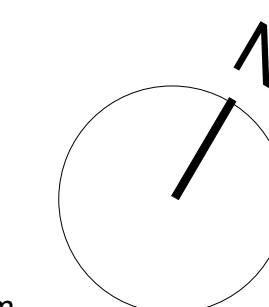
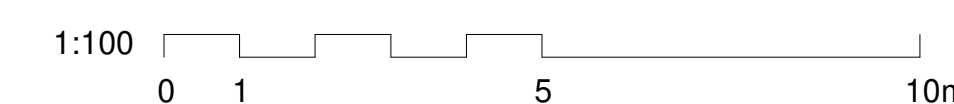
Project
210 Euston Road

Drawing
Demolition Basement Floor Plan

Scale	Drawn	Date	Checked
1:100@A1 (1:200@A3)	VS	01/29/18	SB
Project no.	Drg	Revision	
15077	A - D(03) - 098	00	

tatehindle

TateHindle Limited
1 Lindsey Street
Smithfield
London EC1A 9HP
T 020 7332 4850
mail@tatehindle.co.uk
www.tatehindle.co.uk



Contractors are to check all dimensions prior to commencement on site and notify the architect of any errors, omissions, or discrepancies.

TateHindle Limited retain copyright of this drawing. It may not be copied, altered or reproduced in any way without their written authority.



Demolition KEY

--- Walls, Doors and Stairs to be removed

▨ Slab Demolition

Rev	Description	Date	Checked
00	Issue for Planning	03-07-18	VS

Status
For Planning

Client
Wellcome Trust

Project
210 Euston Road

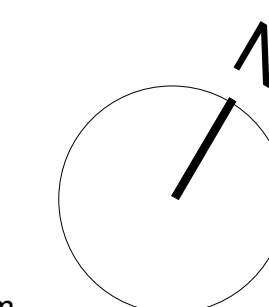
Drawing
Demolition Lower Ground Floor Plan

Scale	Drawn	Date	Checked
1:100@A1 (1:200@A3)	VS	01/29/18	SB
Project no.	Dwg	Revision	
15077	A - D(03) - 099	00	

tatehindle

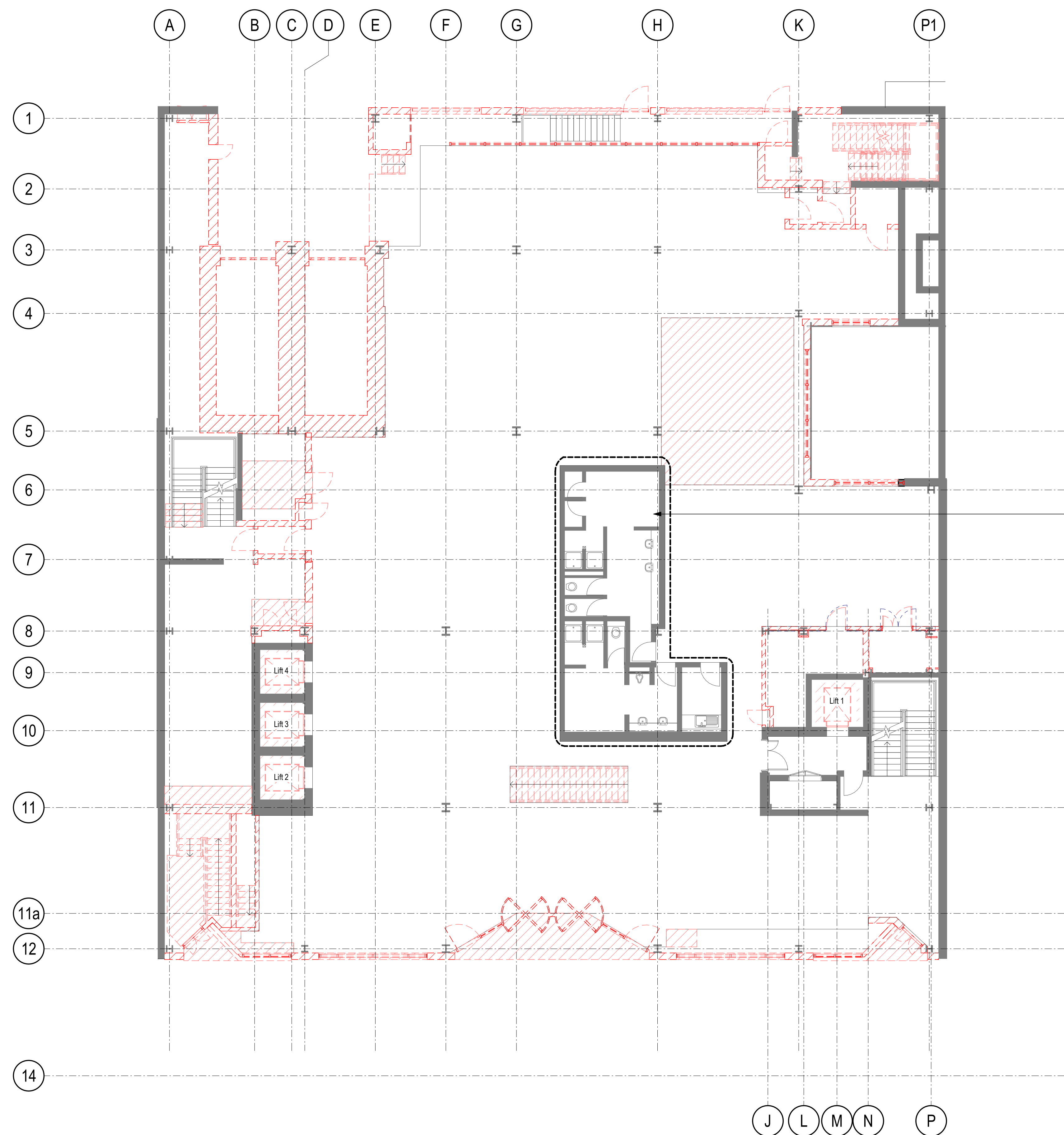
TateHindle Limited
1 Lindsey Street
Smithfield
London EC1A 9HP
T 020 7332 4850
mail@tatehindle.co.uk
www.tatehindle.co.uk

1:100
0 1 5 10m



Contractors are to check all dimensions prior to commencement on site and notify the architect of any errors, omissions, or discrepancies.

TateHindle Limited retain copyright of this drawing. It may not be copied, altered or reproduced in any way without their written authority.



Demolition KEY

--- Walls, Doors and Stairs to be removed

▨ Slab Demolition

Retain for site welfare,
all parts to be left clean
and functioning

Rev	Description	Date	Checked
00	Issue for Planning	03-07-18	VS

Status
For Planning

Client
Wellcome Trust

Project
210 Euston Road

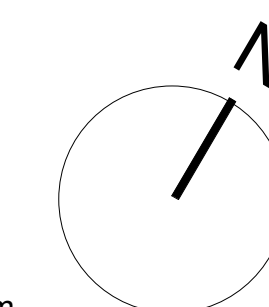
Drawing
Demolition Ground Floor Plan

Scale	Drawn	Date	Checked
1:100@A1 (1:200@A3)	VS	01/23/18	SB
Project no.	Dwg	Revision	
15077	A - D(03) - 100	00	

tatehindle

TateHindle Limited
1 Lindsey Street
Smithfield
London EC1A 9HP
T 020 7332 4850
mail@tatehindle.co.uk
www.tatehindle.co.uk

1:100
0 1 5 10m



Contractors are to check all dimensions prior to commencement on site and notify the architect of any errors, omissions, or discrepancies.

TateHindle Limited retain copyright of this drawing. It may not be copied, altered or reproduced in any way without their written authority.



Demolition KEY

--- Walls, Doors and Stairs to be removed

▨ Slab Demolition

Rev	Description	Date	Checked
00	Issue for Planning	03-07-18	VS

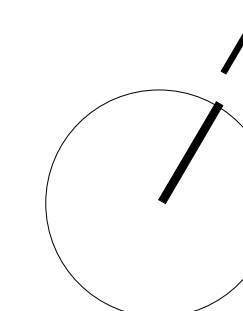
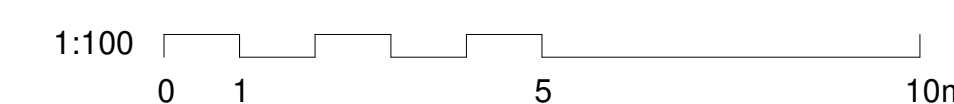
Status
For Planning

Client
Wellcome Trust

Project
210 Euston Road

Drawing
Demolition First Floor Plan

Scale	Drawn	Date	Checked
1:100@A1 (1:200@A3)	VS	01/23/18	SB
Project no.	Dwg	Revision	
15077	A - D(03) - 101	00	



tatehindle

TateHindle Limited
1 Lindsey Street
Smithfield
London EC1A 9HP
T 020 7332 4850
mail@tatehindle.co.uk
www.tatehindle.co.uk

Contractors are to check all dimensions prior to commencement on site and notify the architect of any errors, omissions, or discrepancies.

TateHindle Limited retain copyright of this drawing. It may not be copied, altered or reproduced in any way without their written authority.



Demolition KEY

--- Walls, Doors and Stairs to be removed

▨ Slab Demolition

Rev	Description	Date	Checked
00	Issue for Planning	03-07-18	VS

Status
For Planning

Client
Wellcome Trust

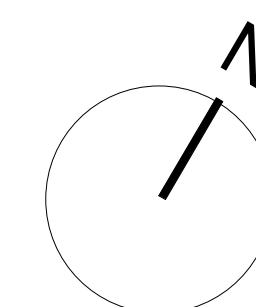
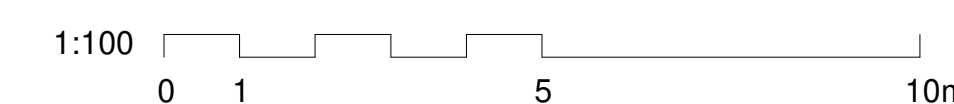
Project
210 Euston Road

Drawing
Demolition Second Floor Plan

Scale	Drawn	Date	Checked
1:100@A1 (1:200@A3)	VS	01/23/18	SB
Project no.	Dwg	Revision	Checked
15077	A - D(03) - 102	00	00

tatehindle

TateHindle Limited
1 Lindsey Street
Smithfield
London EC1A 9HP
T 020 7332 4850
mail@tatehindle.co.uk
www.tatehindle.co.uk



Contractors are to check all dimensions prior to commencement on site and notify the architect of any errors, omissions, or discrepancies.

TateHindle Limited retain copyright of this drawing. It may not be copied, altered or reproduced in any way without their written authority.



Demolition KEY

--- Walls, Doors and Stairs to be removed

▨ Slab Demolition

Rev	Description	Date	Checked
00	Issue for Planning	03-07-18	VS

Status
For Planning

Client
Wellcome Trust

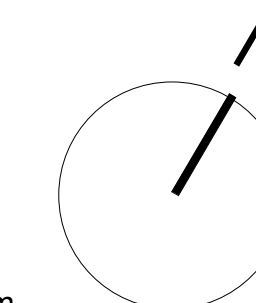
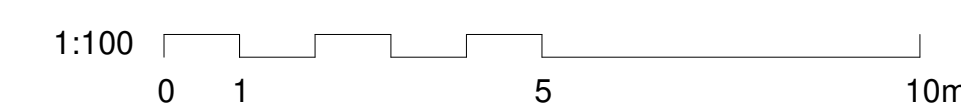
Project
210 Euston Road

Drawing
Demolition Third Floor Plan

Scale	Drawn	Date	Checked
1:100@A1 (1:200@A3)	VS	01/23/18	SB
Project no.	Dwg	Revision	
15077	A - D(03) - 103	00	

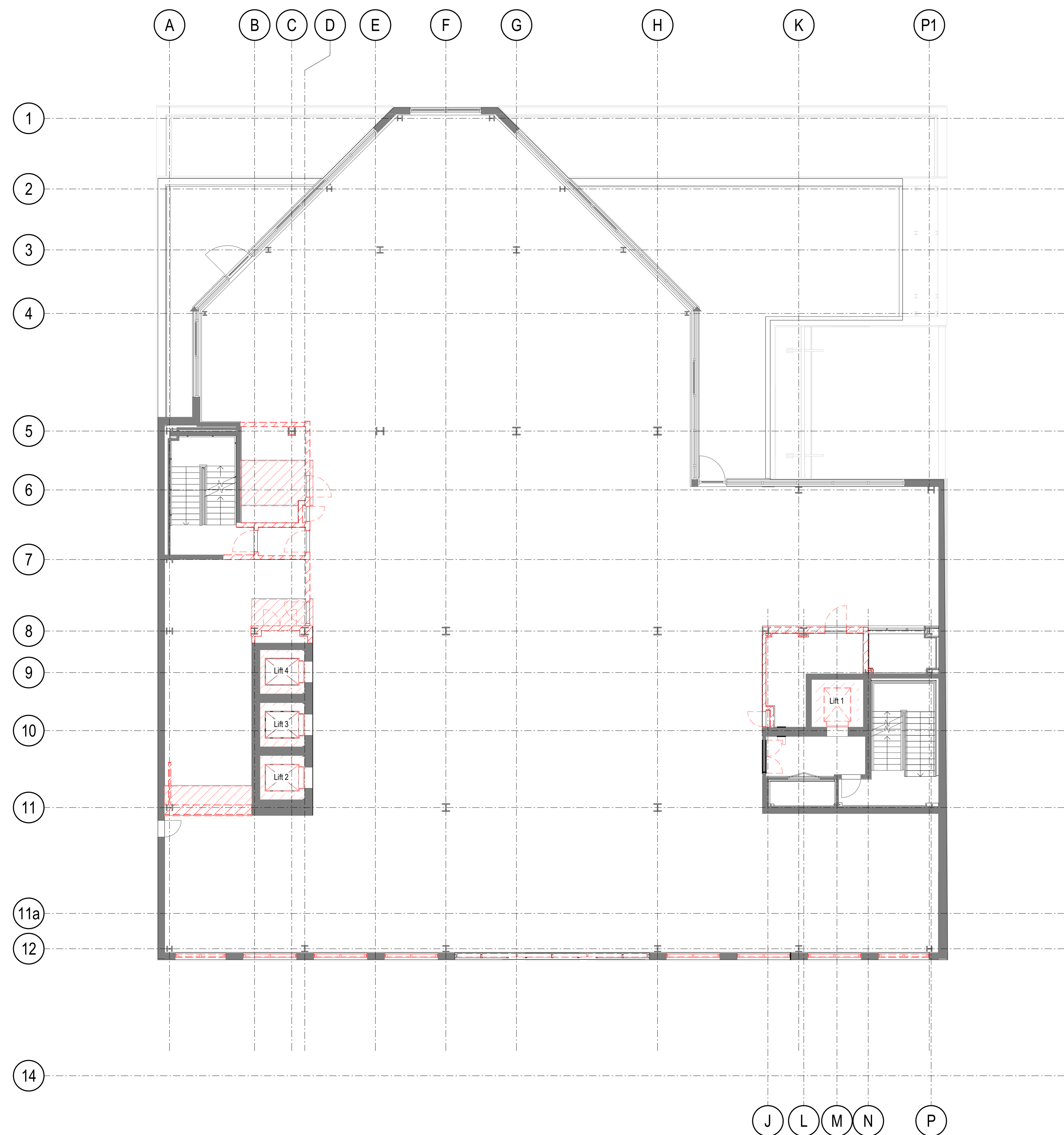
tatehindle

TateHindle Limited
1 Lindsey Street
Smithfield
London EC1A 9HP
T 020 7332 4850
mail@tatehindle.co.uk
www.tatehindle.co.uk



Contractors are to check all dimensions prior to commencement on site and notify the architect of any errors, omissions, or discrepancies.

TateHindle Limited retain copyright of this drawing. It may not be copied, altered or reproduced in any way without their written authority.



Demolition KEY

--- Walls, Doors and Stairs to be removed

▨ Slab Demolition

Rev	Description	Date	Checked
00	Issue for Planning	03-07-18	VS

Status
For Planning

Client
Wellcome Trust

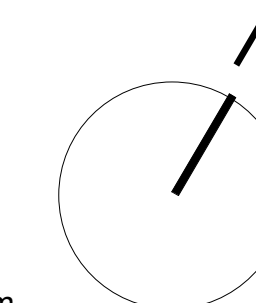
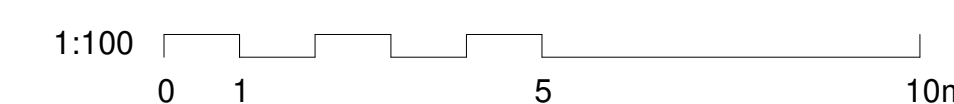
Project
210 Euston Road

Drawing
Demolition Fourth Floor Plan

Scale	Drawn	Date	Checked
1:100@A1 (1:200@A3)	VS	01/23/18	SB
Project no.	Dwg	Revision	
15077	A - D(03) - 104	00	

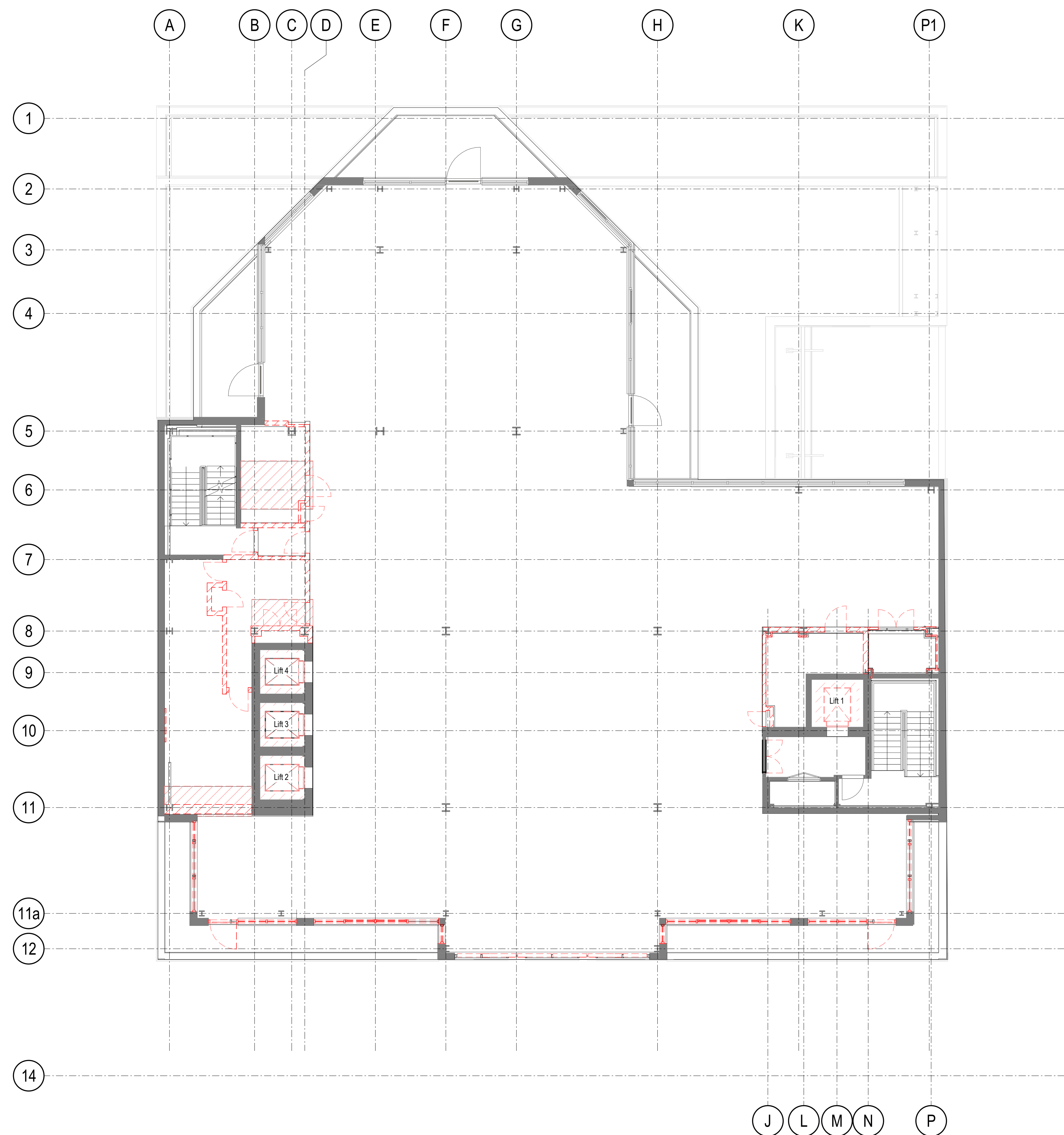
tatehindle

TateHindle Limited
1 Lindsey Street
Smithfield
London EC1A 9HP
T 020 7332 4850
mail@tatehindle.co.uk
www.tatehindle.co.uk



Contractors are to check all dimensions prior to commencement on site and notify the architect of any errors, omissions, or discrepancies.

TateHindle Limited retain copyright of this drawing. It may not be copied, altered or reproduced in any way without their written authority.



Demolition KEY

--- Walls, Doors and Stairs to be removed

▨ Slab Demolition

00	Issue for Planning	03-07-18	VS
Rev	Description	Date	Checked

Status
For Planning

Client
Wellcome Trust

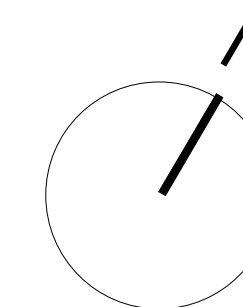
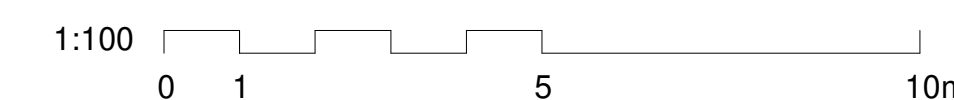
Project
210 Euston Road

Drawing
Demolition Fifth Floor Plan

Scale 1:100@A1 (1:200@A3)	Drawn VS	Date 01/23/18	Checked SB
Project no. 15077	Drg A - D(03) - 105	Revision 00	

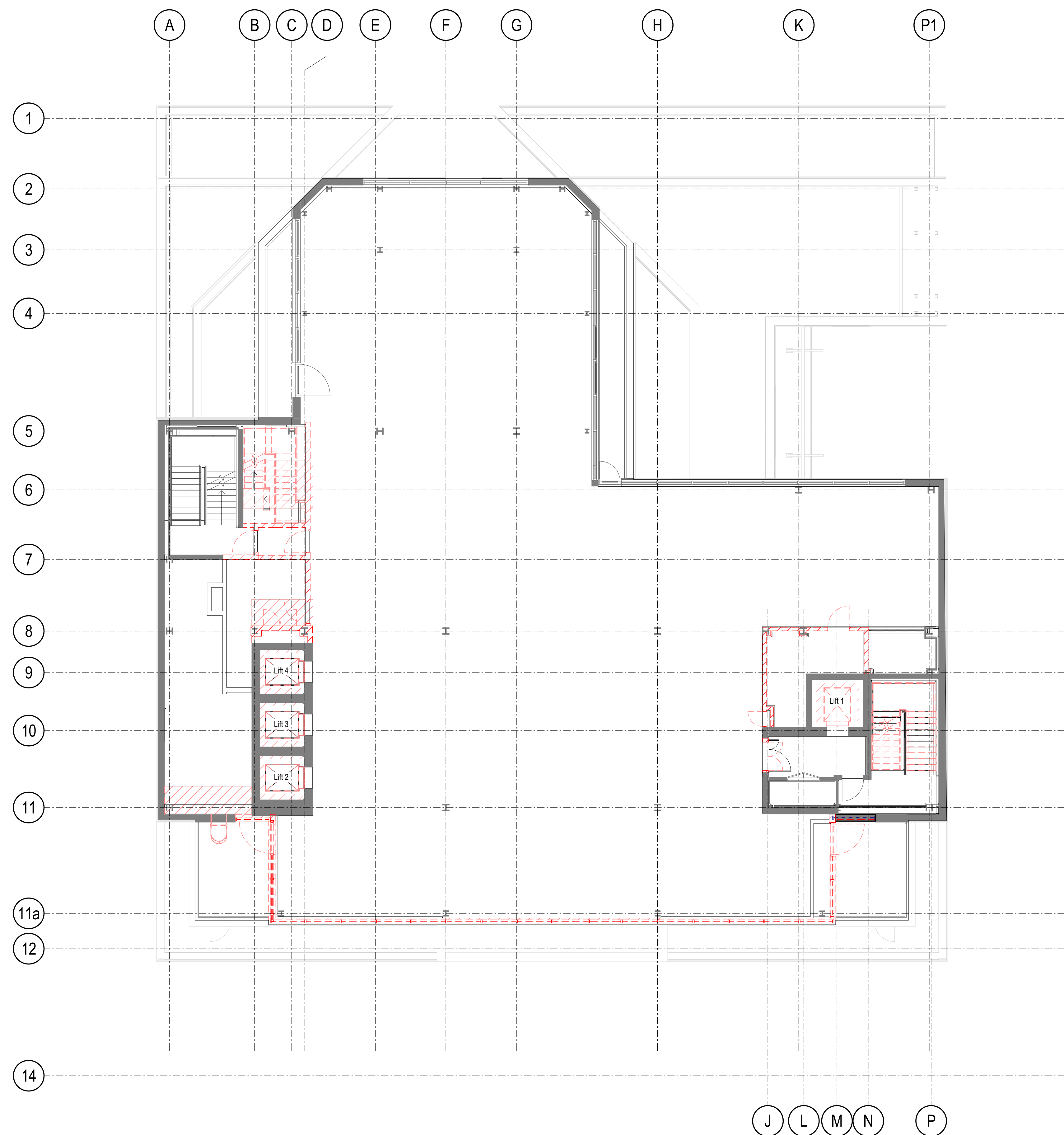
tatehindle

TateHindle Limited
1 Lindsey Street
Smithfield
London EC1A 9HP
T 020 7332 4850
mail@tatehindle.co.uk
www.tatehindle.co.uk



Contractors are to check all dimensions prior to commencement on site and notify the architect of any errors, omissions, or discrepancies.

TateHindle Limited retain copyright of this drawing. It may not be copied, altered or reproduced in any way without their written authority.



Demolition KEY

--- Walls, Doors and Stairs to be removed

▨ Slab Demolition

Rev	Description	Date	Checked
00	Issue for Planning	03-07-18	VS

Status
For Planning

Client
Wellcome Trust

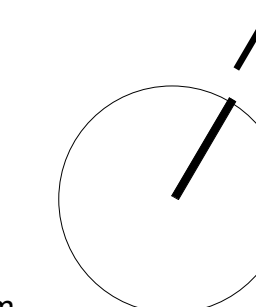
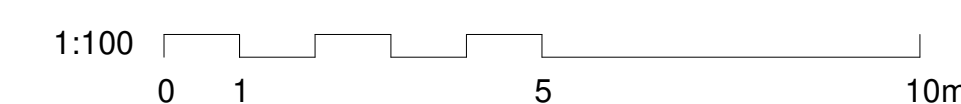
Project
210 Euston Road

Drawing
Demolition Sixth Floor Plan

Scale	Drawn	Date	Checked
1:100@A1 (1:200@A3)	VS	01/23/18	SB
Project no.	Drg	Revision	
15077	A - D(03) - 106	00	

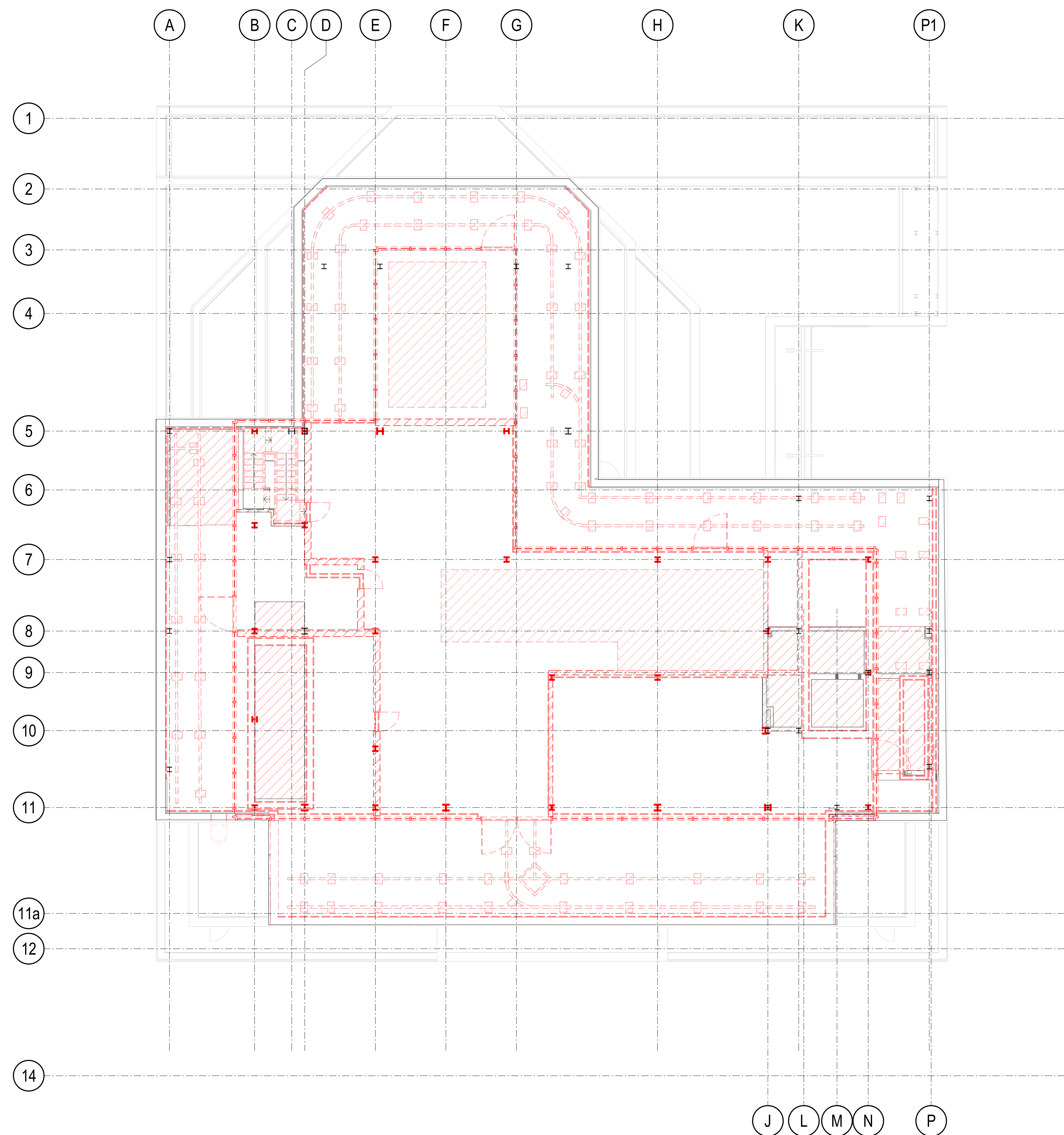
tatehindle

TateHindle Limited
1 Lindsey Street
Smithfield
London EC1A 9HP
T 020 7332 4850
mail@tatehindle.co.uk
www.tatehindle.co.uk



Contractors are to check all dimensions prior to commencement on site and notify the architect of any errors, omissions, or discrepancies.

TateHindle Limited retain copyright of this drawing. It may not be copied, altered or reproduced in any way without their written authority.



Demolition KEY

--- Walls, Doors and Stairs to be removed

▨ Slab Demolition

00	Issue for Planning	03-07-18	VS
Rev	Description	Date	Checked

Status
For Planning

Client
Wellcome Trust

Project
210 Euston Road

Drawing
Demolition Seventh Floor Plan

Scale 1:100@A1 (1:200@A3)	Drawn VS	Date 01/23/18	Checked SB
Project no. 15077	Drg A - D(03) - 107	Revision 00	

tatehindle

TateHindle Limited
1 Lindsey Street
Smithfield
London EC1A 9HP
T 020 7332 4850
mail@tatehindle.co.uk
www.tatehindle.co.uk

