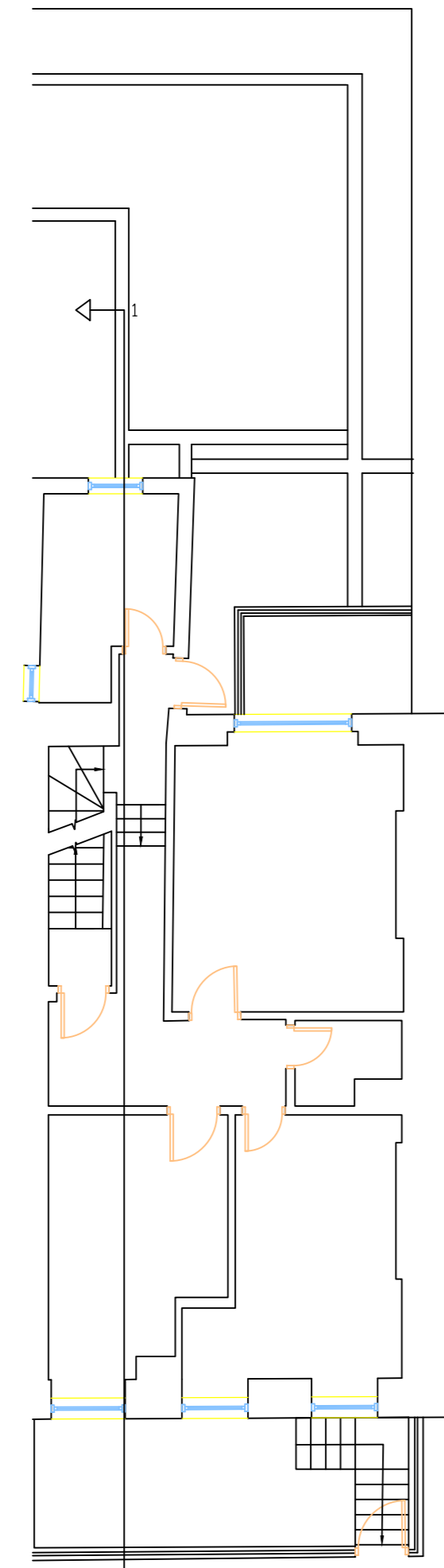
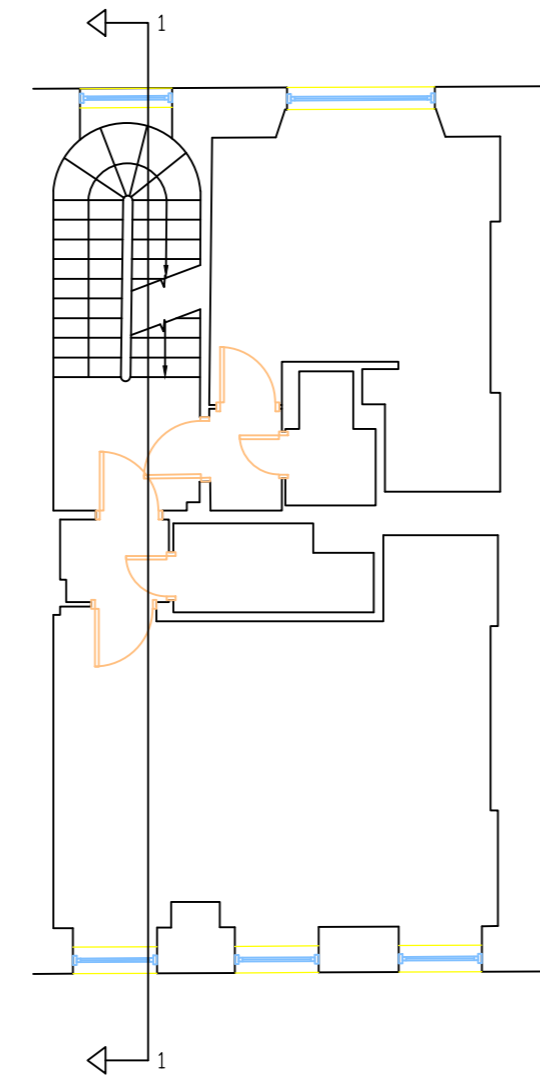


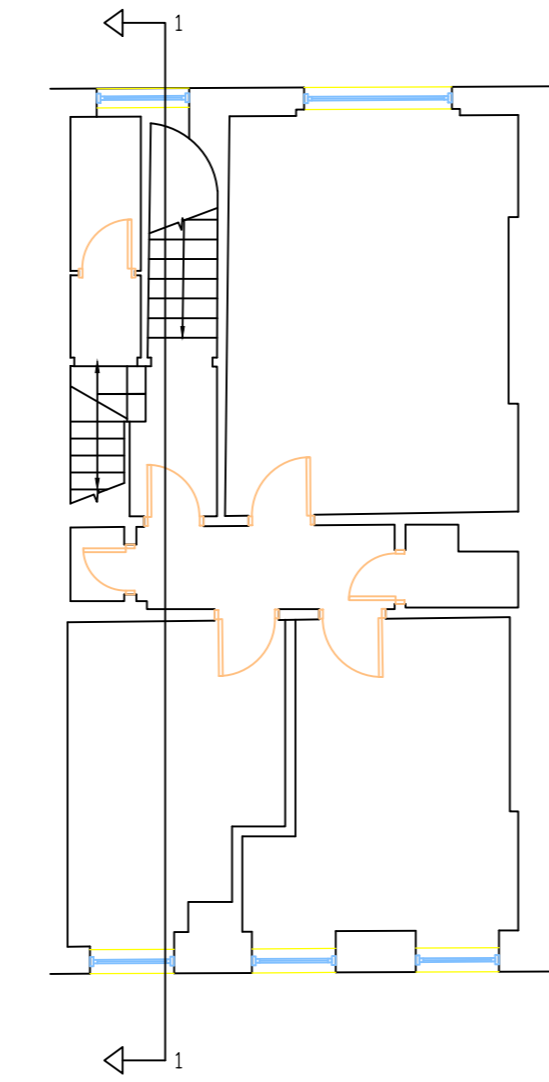
Existing Basement



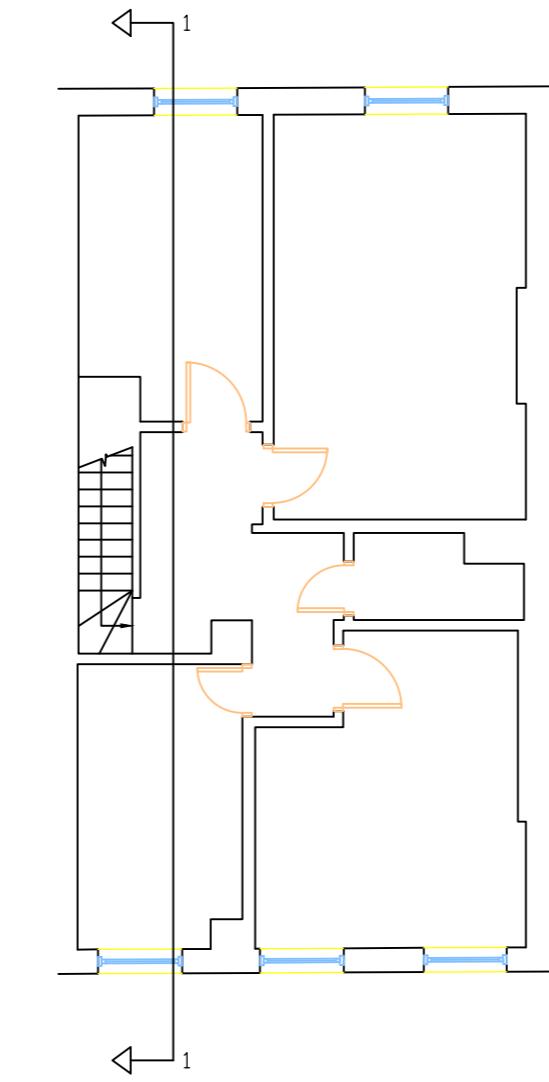
Existing Ground Floor



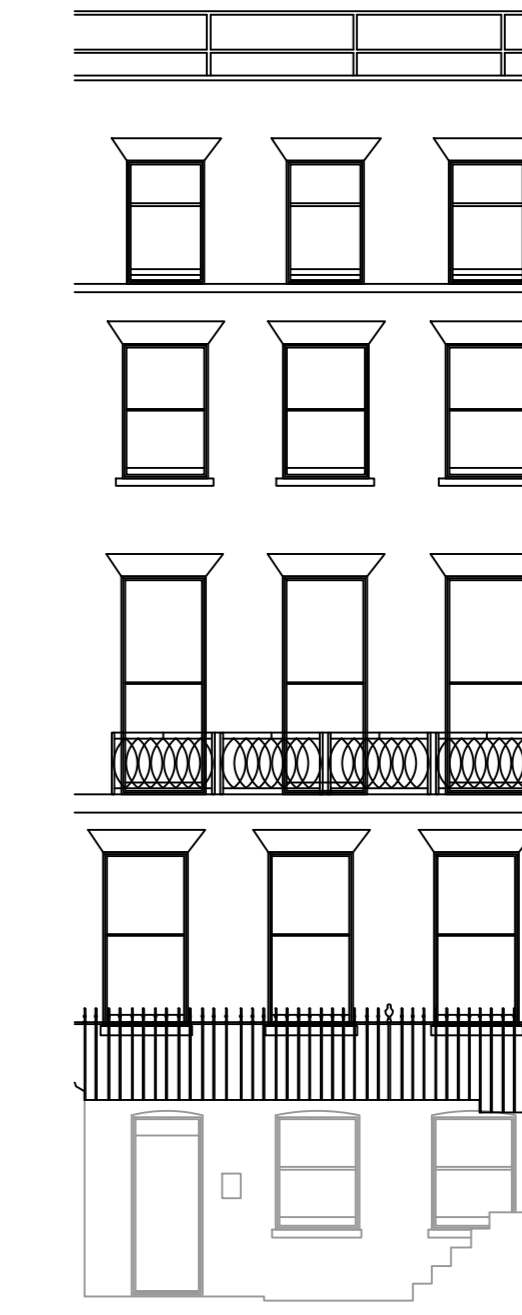
Existing First Floor



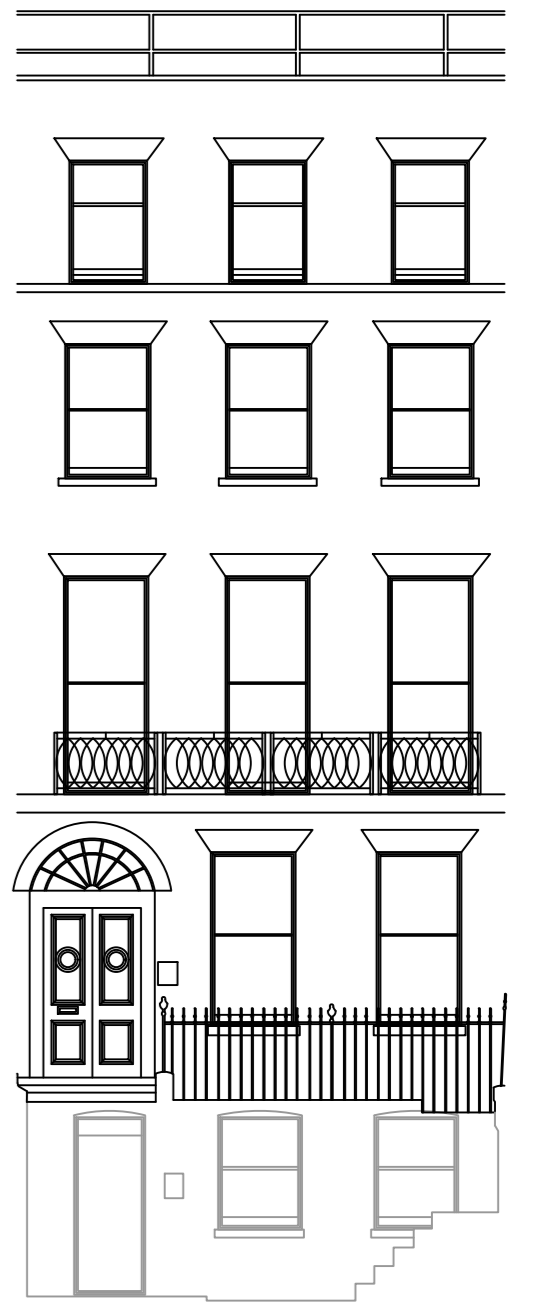
Existing Second Floor



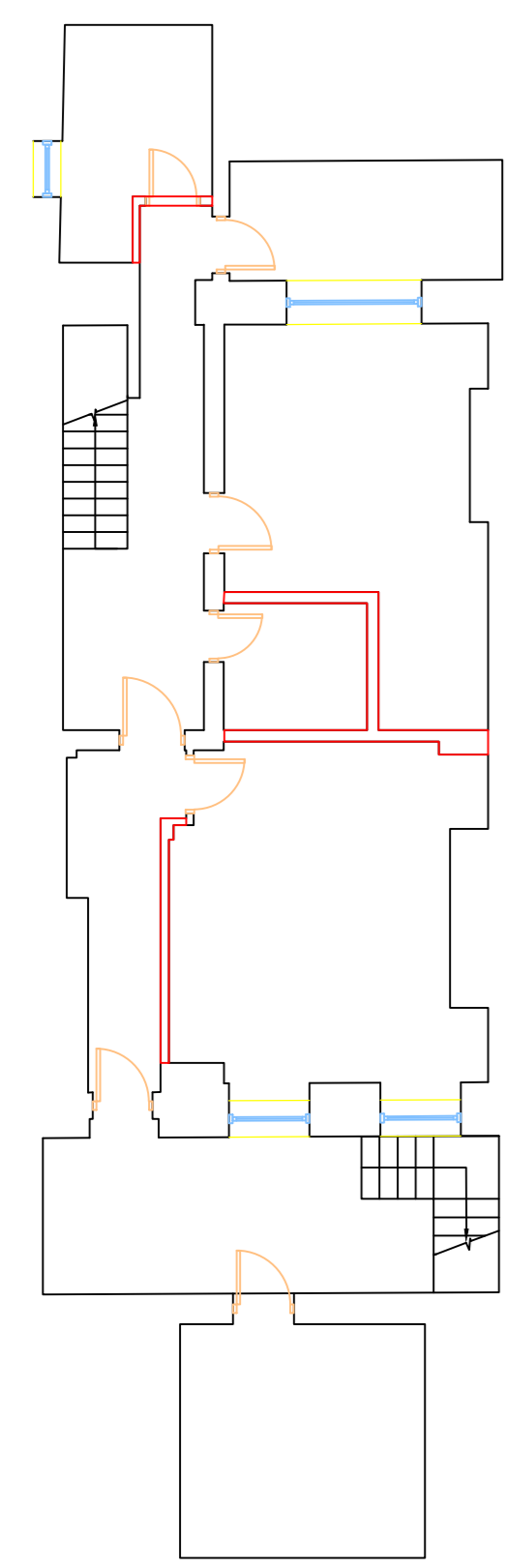
Existing Third Floor



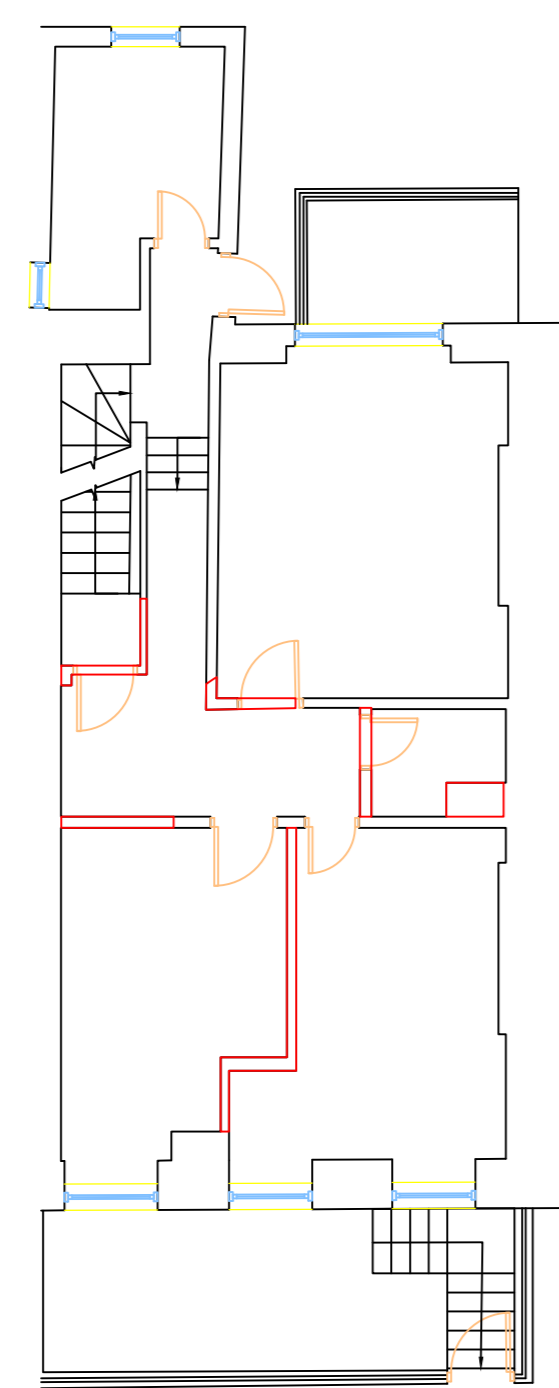
Existing Front Elevation



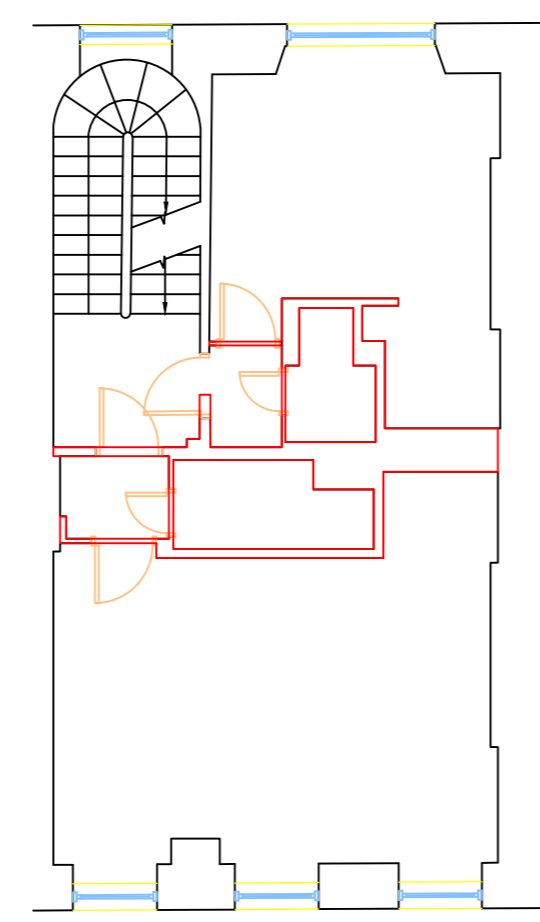
Proposed Front Elevation



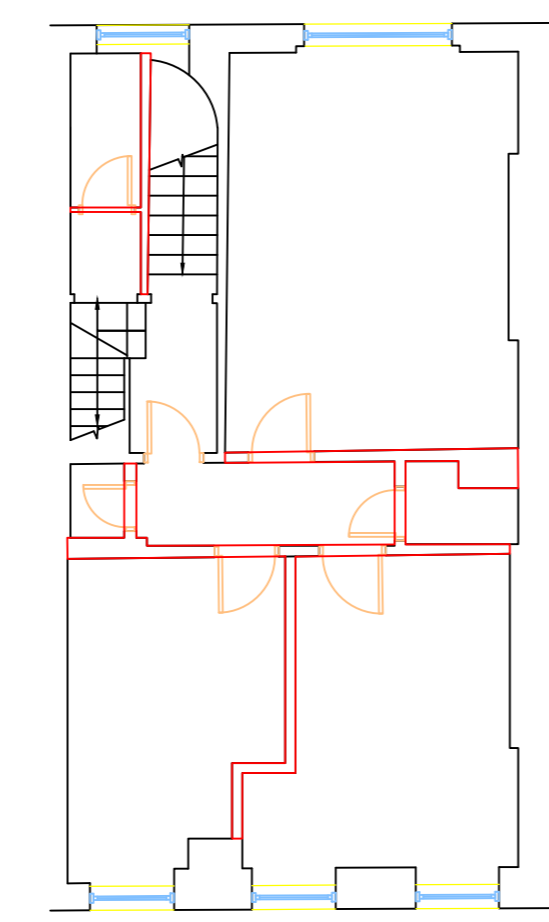
Demolition at Basement



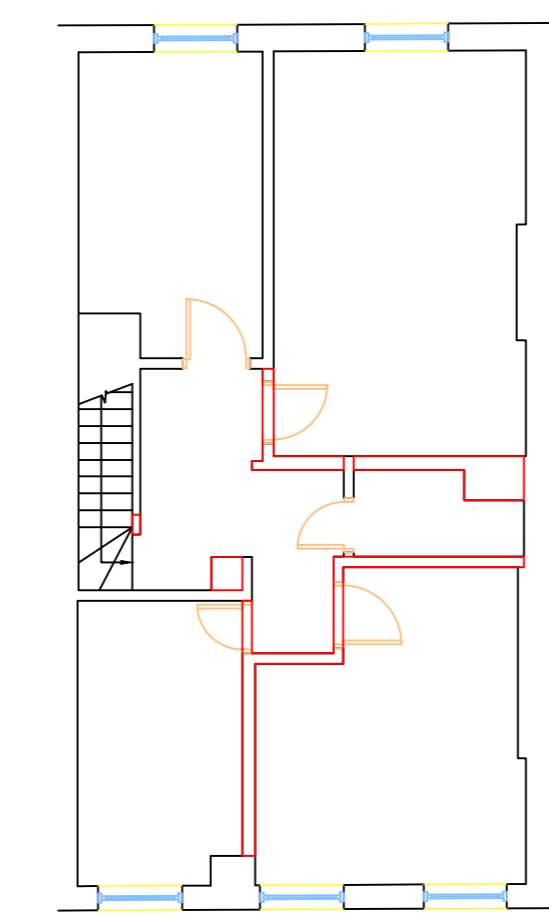
Demolition at Ground Floor



Demolition at First Floor



Demolition at Second Floor



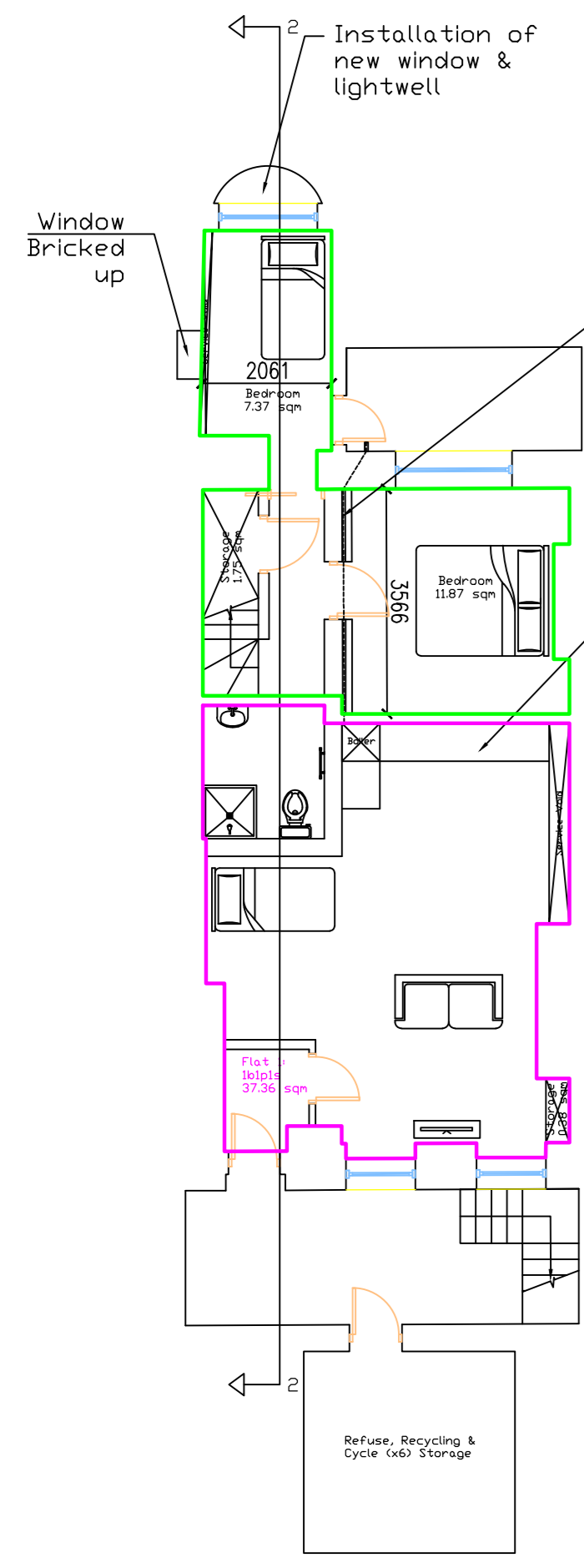
Demolition at Third Floor



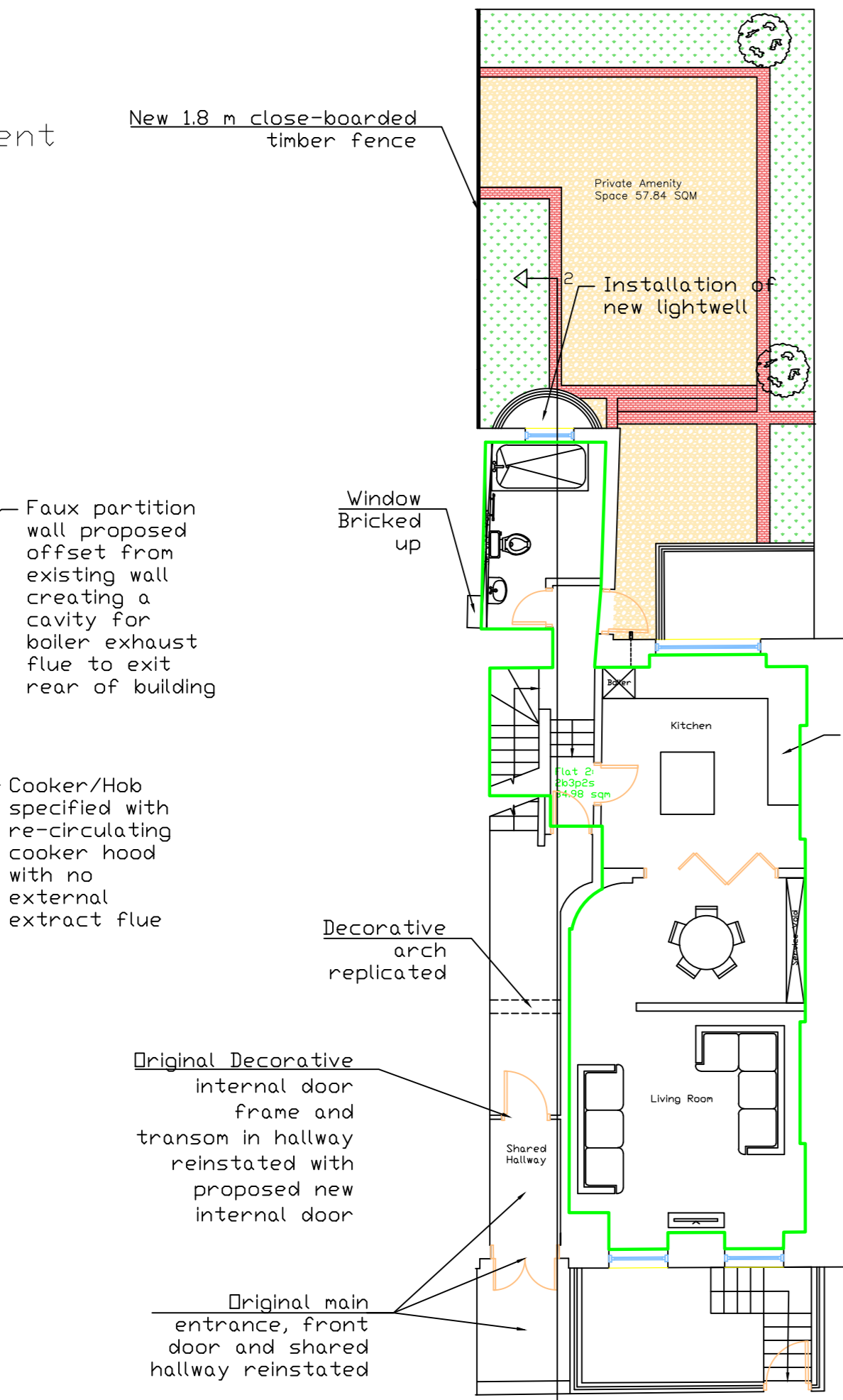
Existing Rear Elevation



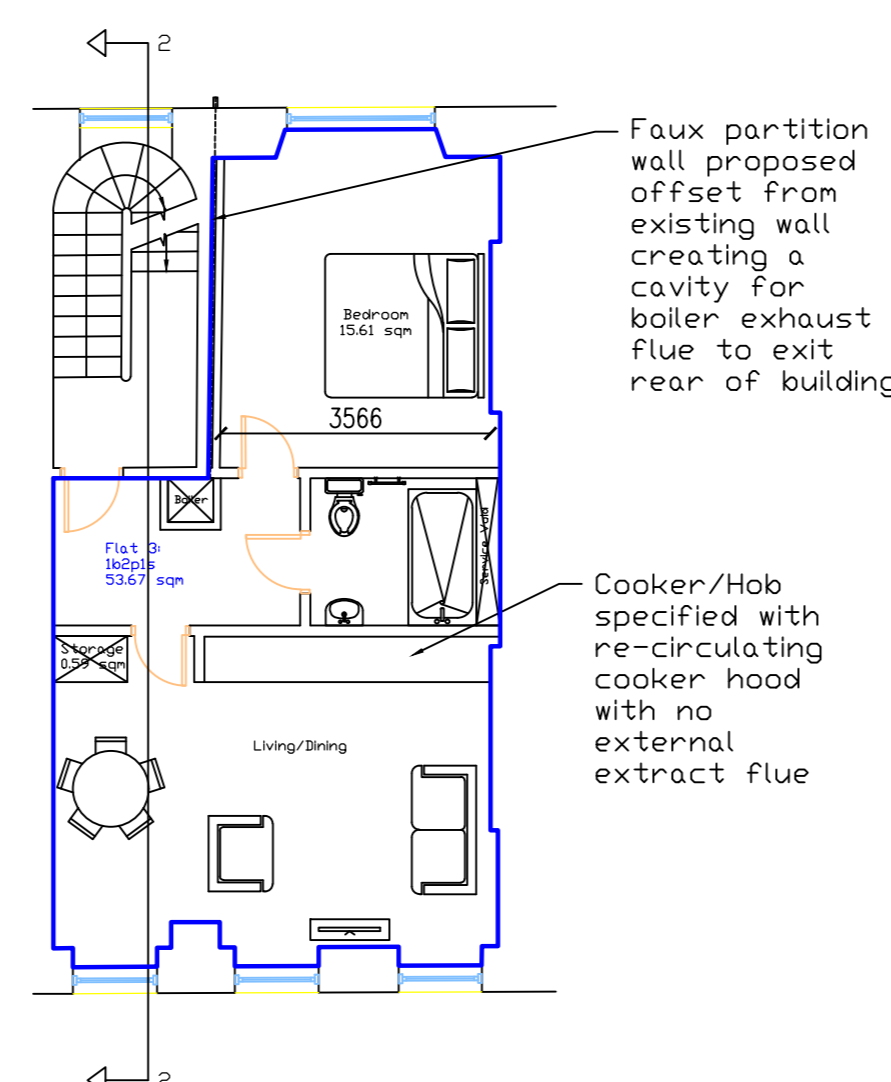
Proposed Rear Elevation  
Installation of basement window & lightwell



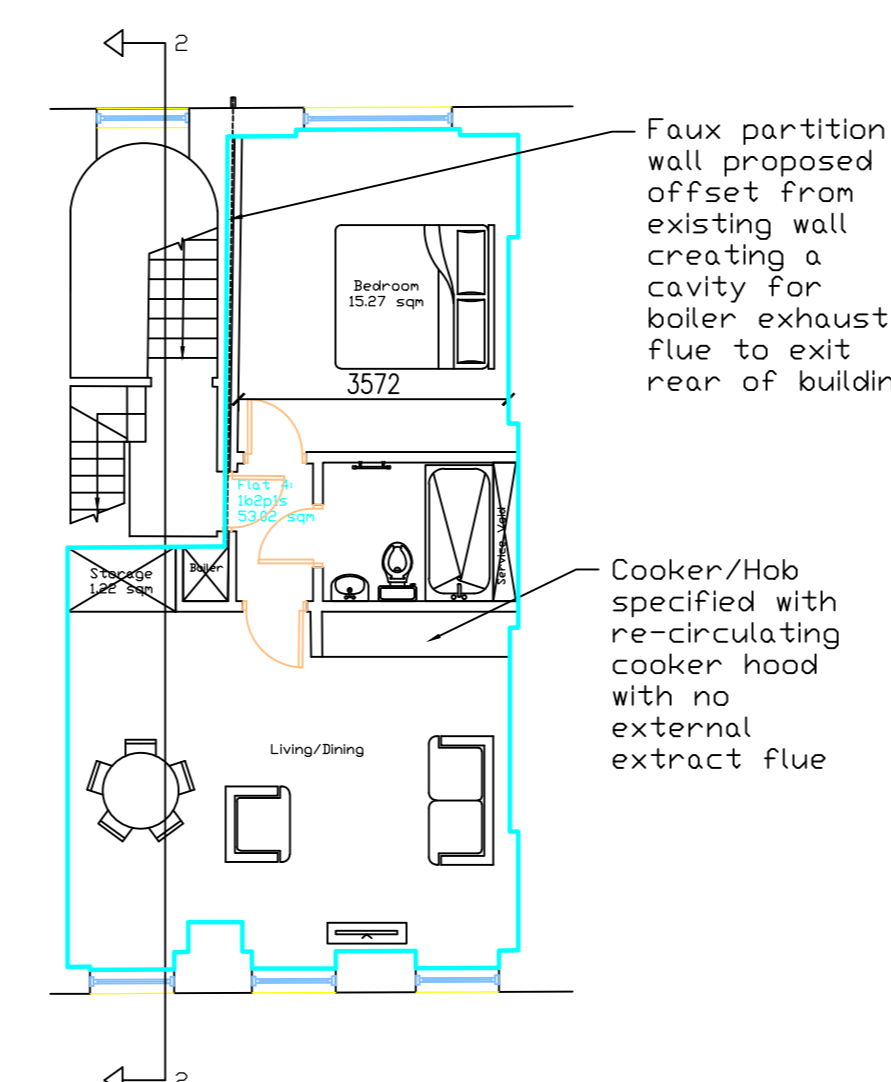
Proposed Basement



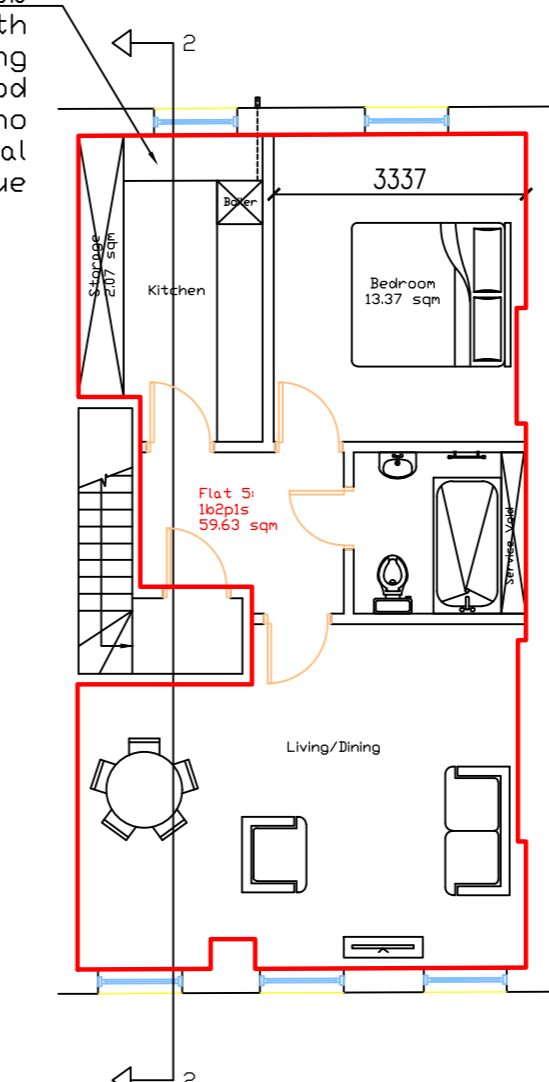
Proposed Ground Floor



Proposed First Floor



Proposed Second Floor



Proposed Third Floor

New 1.8 m close-boarded timber fence

Installation of new window & lightwell

Installation of new lightwell

Faux partition wall proposed offset from existing wall creating a cavity for boiler exhaust flue to exit rear of building

Cooker/Hob specified with re-circulating cooker hood with no external extract flue

Decorative arch replicated

Original decorative internal door frame and transom in hallway reinstated with proposed new internal door

Original main entrance front door and shared hallway reinstated

Before Recycling & Give-Back Storage

Window Bricked up

Cooker/Hob specified with re-circulating cooker hood with no external extract flue

Decorative arch replicated

Original decorative internal door frame and transom in hallway reinstated with proposed new internal door

Original main entrance front door and shared hallway reinstated

Before Recycling & Give-Back Storage

Faux partition wall proposed offset from existing wall creating a cavity for boiler exhaust flue to exit rear of building

Cooker/Hob specified with re-circulating cooker hood with no external extract flue

Cooker/Hob specified with re-circulating cooker hood with no external extract flue

Cooker/Hob specified with re-circulating cooker hood with no external extract flue

Cooker/Hob specified with re-circulating cooker hood with no external extract flue

Cooker/Hob specified with re-circulating cooker hood with no external extract flue

Faux partition wall proposed offset from existing wall creating a cavity for boiler exhaust flue to exit rear of building

Cooker/Hob specified with re-circulating cooker hood with no external extract flue

Cooker/Hob specified with re-circulating cooker hood with no external extract flue

Cooker/Hob specified with re-circulating cooker hood with no external extract flue

Cooker/Hob specified with re-circulating cooker hood with no external extract flue

Cooker/Hob specified with re-circulating cooker hood with no external extract flue

Cooker/Hob specified with re-circulating cooker hood with no external extract flue

Cooker/Hob specified with re-circulating cooker hood with no external extract flue

Cooker/Hob specified with re-circulating cooker hood with no external extract flue

Cooker/Hob specified with re-circulating cooker hood with no external extract flue

Cooker/Hob specified with re-circulating cooker hood with no external extract flue

Cooker/Hob specified with re-circulating cooker hood with no external extract flue

- 1. ANY INACCURACIES OR ERRORS TO BE REPORTED TO THE IMMEDIATELY PRIOR TO ANY WORK COMMENCING.
- 2. ALL DIMENSIONS TO BE VERIFIED ON SITE.
- 3. ALL WORK TO COMPLY WITH BRITISH STANDARDS CODE OF PRACTICE.
- 4. ALL EXTERNAL SURFACES AND MATERIALS TO MATCH.