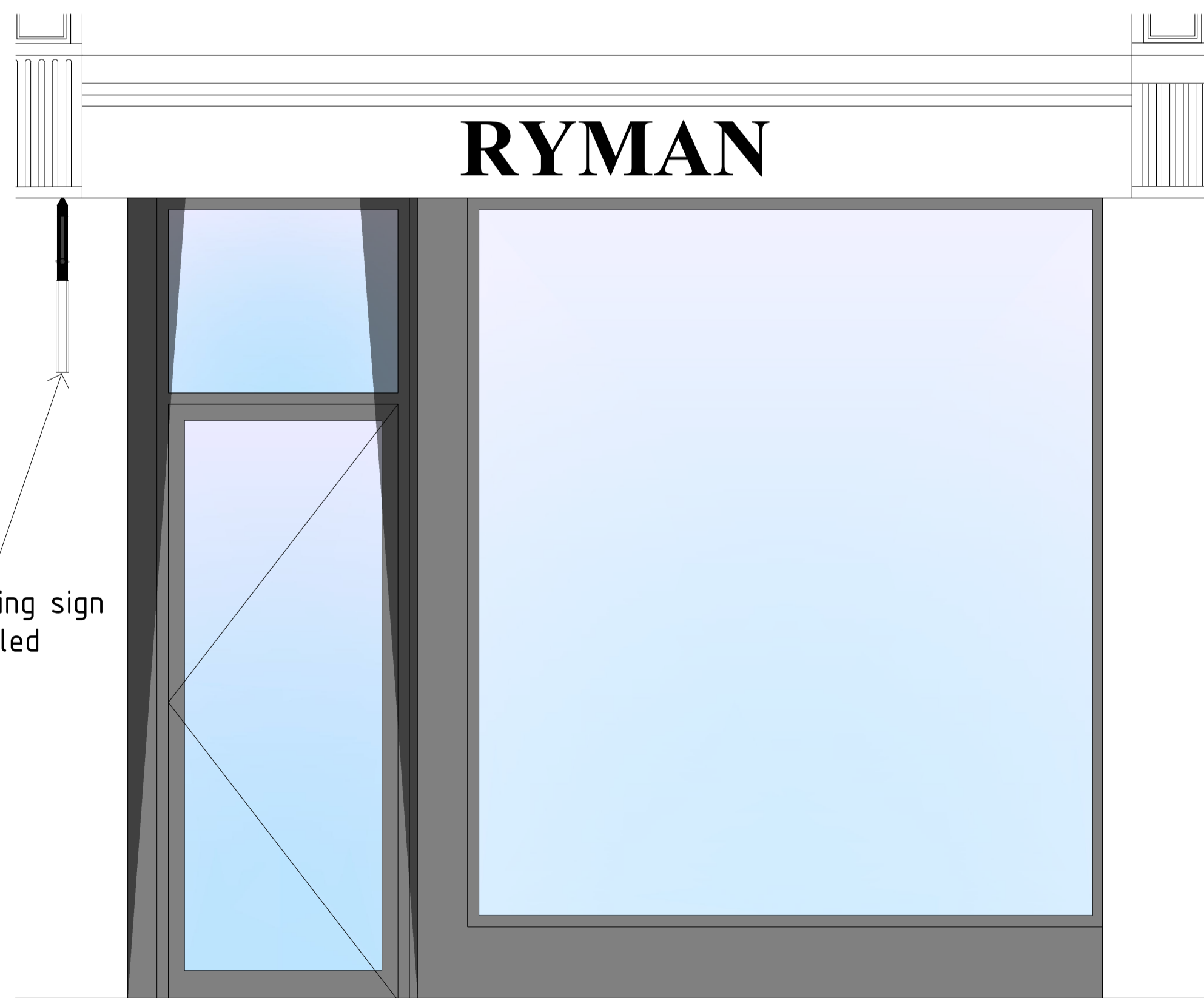
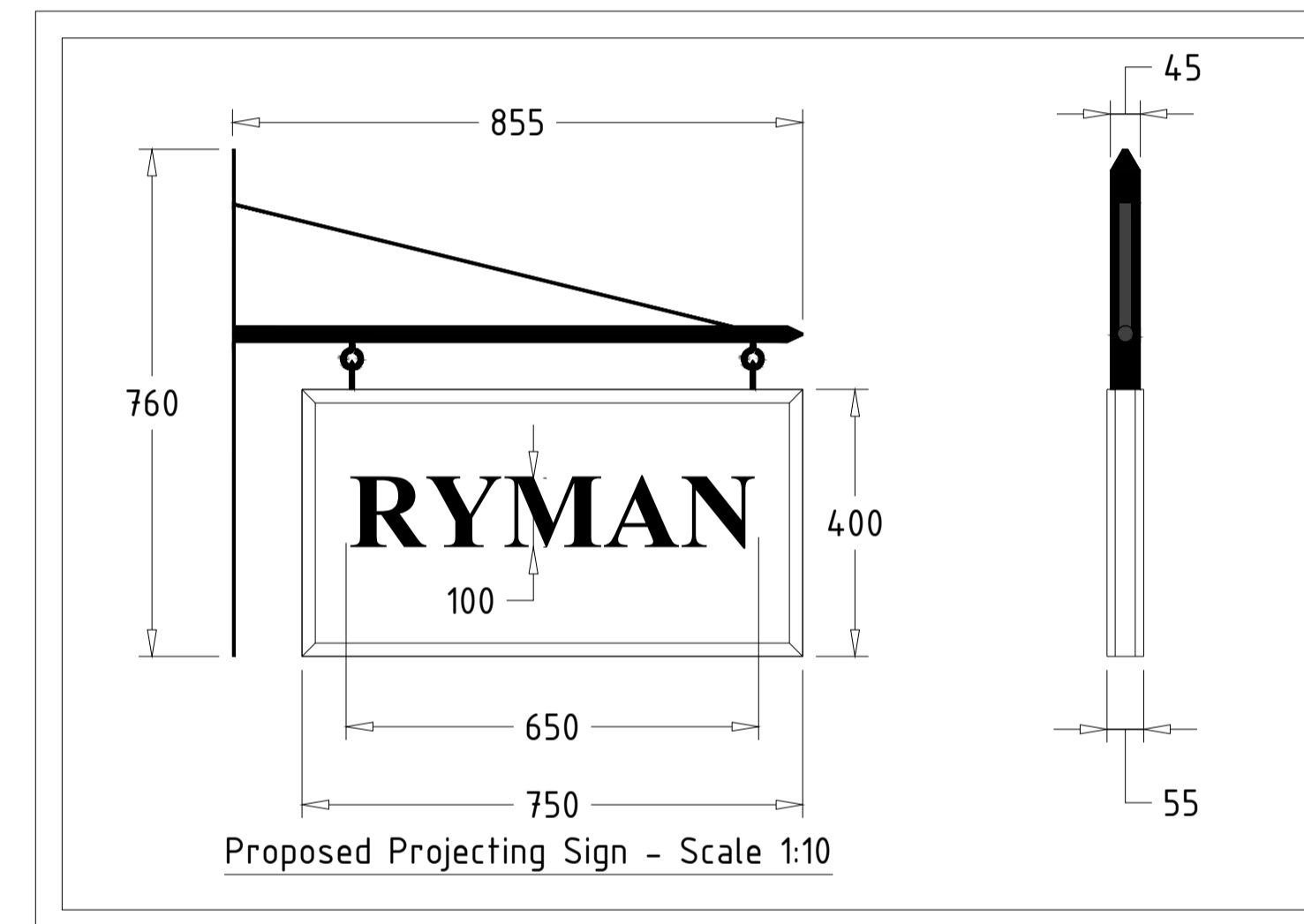


Existing Shopfront



Proposed Shopfront




**Projecting Sign**

Contractor to install a new projecting sign and hanging black bracket with 'Ryman' on one line and positioned centrally over the LH pilaster.

Projecting sign to be timber back panels with beaded frames and decorated in standard cream.

Projecting sign to incorporate new 'Ryman' logo - Lettering lasercut from bronze sheet (or steel sheet with bronze-effect patina applied), min. 3mm thick, mounted on stainless steel point/dowel fixings (to match existing Ryman fascia sign).

 <p>Unit 4, Kingsthorpe Business Park, Studland Road Northampton. NN2 6NE. T: (01604) 791050 F: (01604) 791281 E: office@ppsshopfit.com</p>	CLIENT Ryman	DATE 14.03.2018	SCALE 1:20 @ A1 or as stated
	CONTRACT Unit 2 Bloomsbury Plaza New Oxford Street, London, WC1A 1ES	DRAWN BY DE	DRAWING NO. 210-1229
	DRAWING TITLE Existing and Proposed Shopfront	No Revisions	Date
		A Corbel detail added	21.03.2018