

Specification/Data sheet

UltraVent® Plus 61/101 E



Article number: 60.72.202

Description

- In addition to the UltraVent condensation technology there is also UltraVent Plus, which is equipped with special filters. This prevents both vapours and the lingering smoke that builds up while grilling and roasting. Units can be installed even in critical locations, such as front shop-front areas.

Technical Info

- Rating: 230V 1 NAC 50/60 HZ
- Connected load: 360 W
- Extraction volume: 1.000 m³/h
- Operating noise level 1: 65 dBA
- Operating noise level 2: 70 dBA
- Width: 854 mm
- Height: 628 mm
- Depth: 1226 mm
- Weight: 54 kg
- Approvals: VDE, NSF

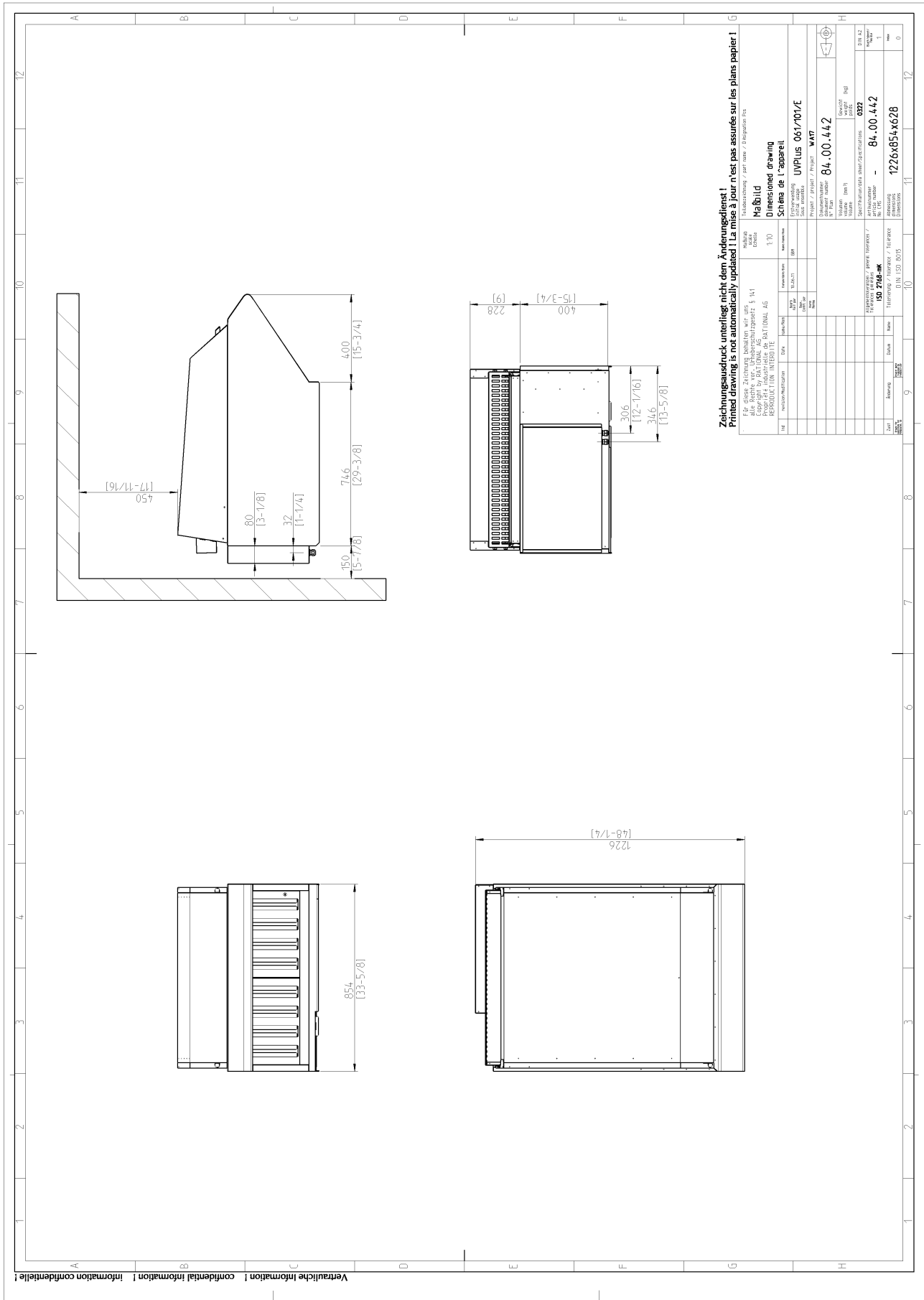
Features

- Integrated lighting
- Easy-clean grease filter (CNS)/replaceable carbon filter
- High extraction rate
- Proximity door contact switch
- Extraction rate automatically increased when cabinet door is opened
- with special filter technology

Hint

- The local norms and specifications for air conditioning systems must be observed. A raised base cabinet US III (956 mm) should be used for installation on type 61 units.
- The UltraVent exhaust hood with condensation system should only be used on units with right-hinging doors. It may be used on left-hinging units, but this restricts the extraction function.

Specification/Data sheet
UltraVent® Plus 61/101 E



Zichingausdruck unterliegt nicht dem Änderungsdienst!
Printed drawing is not automatically updated!
La mise à jour n'est pas assurée sur les plans papier!

Für diese Zeichnung beauftragen wir uns die Rechte an dem gezeichneten Gegenstand zu erwerben. Die Rechte an dem gezeichneten Gegenstand verbleiben bei der Industrieholding der RATIONAL AG.		Industriezeichnung / part name / description / description	
Titel	Bezeichnung	Maßstab	Maßstab
1226	UltraVent Plus 61/101 E	1:10	1:10
Zeichnungsart		Entwurf	
Schema de l'appareil		UNPLUS 661/101ZE	
Projekt / Projekt / Project		WAT7	
Zeichnungsnummer		84.00.442	
Version		0322	
Abmaßnummer		84.00.442	
Abmaß		1226x854x628	
Abmaß		1226x854x628	