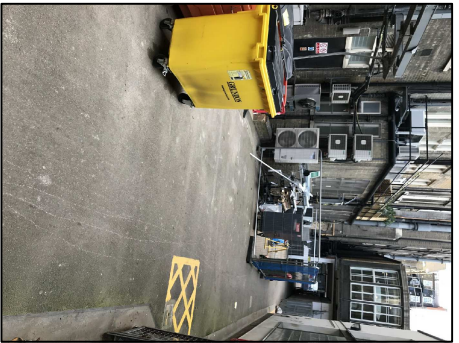




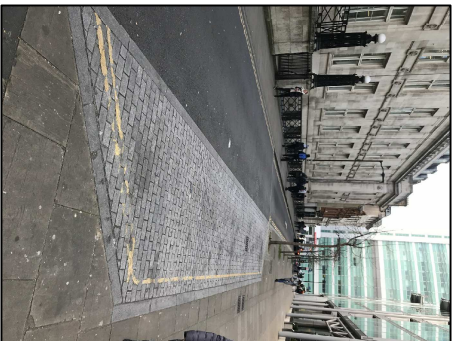
1. Material storage / waste / scaffold drop off



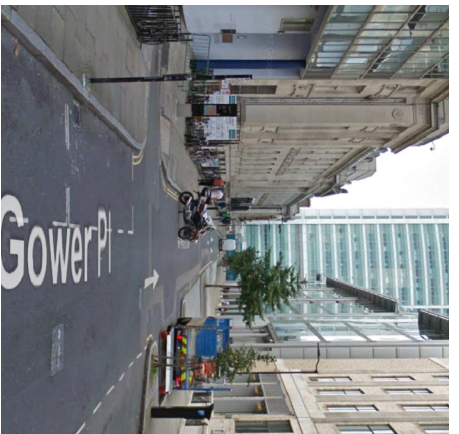
2. Material storage / waste / scaffold drop off



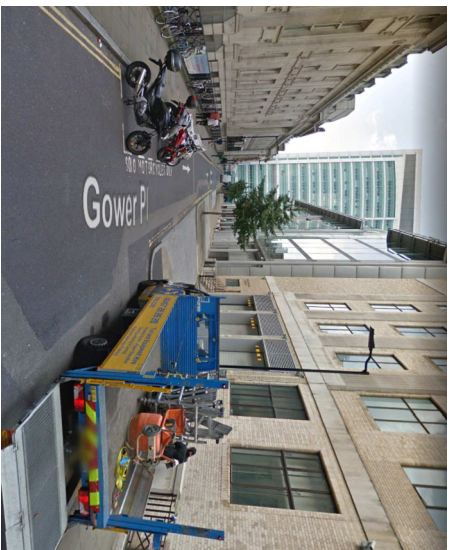
3. Hoist, adjacent to fire escape



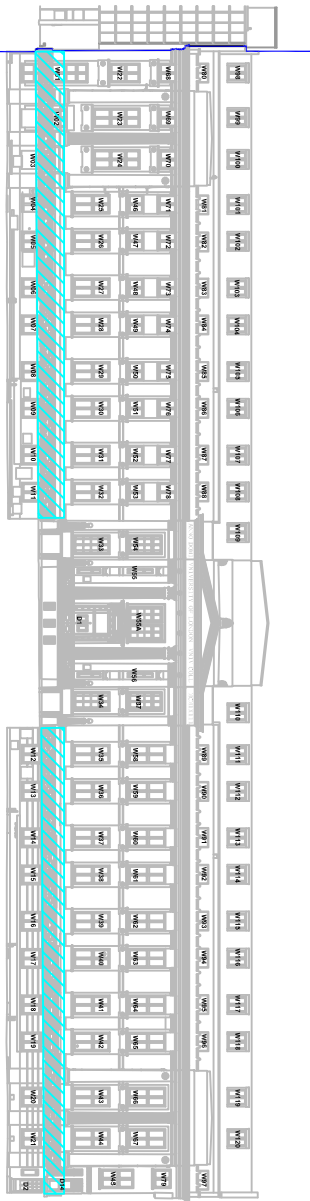
4. Assumed loading bay



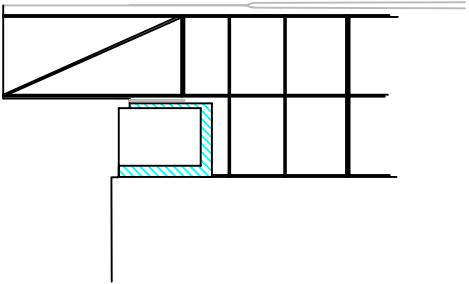
5. Motorcycle bay



6 & 7. Motorcycle bays



1 Front Elevation - Indicative Hoarding Line
1 : 200 @ A3



Note: This is a sketch of the section we envisage for the front facade once th scaffolding and hoarding is installed. We envisage haording being installed to the scaffolding creating a protected pedestrian walkway along Gower Place, with the welfare cabin situated above.

2 Section (Sketch) - Indicative Scaffold & Hoarding Arrangement, Front Elevation
NTS @ A3



3 Indicative Site Logistics Plan
1 : 200 @ A3

Site Location

Indicative Hoarding Line

Indicative Floor Print of Scaffolding